



Masterbox

01. General specifications



General specifications

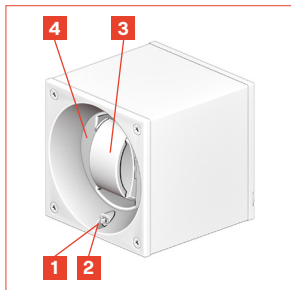
This rotating case has been specially designed for the storage and winding of virtually all mechanical self-winding watches available on the market. It is programmed to perform a cycle of 1,200 revolutions per day, i.e. 600 clockwise and 600 counter-clockwise rotations.

Swiss-made, the rotating case is constructed using top-quality materials. Both the direct mechanical drive and the electronic board, with a specified number of 1,200 rotations/day, have been developed and tested using modern, innovative technologies. This ensures high operational reliability and a long service life.

02. User manual



User manual



- 1** Switch (on / off)
- 2** Indicator light
- 3** Watch holder
- 4** Rotating cylinder
- 5** Protective glass

Bluetooth quick start

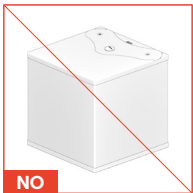
To connect the rotating box to your smartphone via Bluetooth:

1. Download the SwissKubik app on your smartphone
2. Once the application is installed, switch your SwissKubik watch winder on.
3. Your watch winder is now detectable for 1 minute and should appear on the SwissKubik app. Select it.
4. Congratulation ! Your smartphone is now connected to your watch winder.
5. Optional: Rename the watch if needed, directly on your smartphone.



Positioning the rotating box

IMPORTANT: During use, the rotating box must imperatively be in the correct position (vertical watch), as shown in the images below.



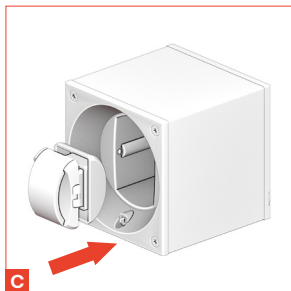
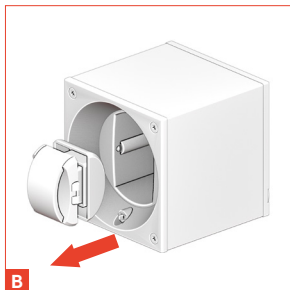
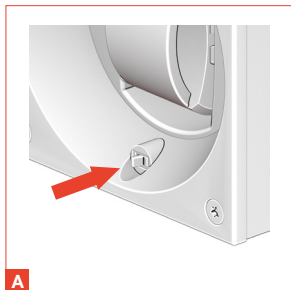
Mounting and removing the watch from the holder

To place the watch on the rotating box holder (3):

1. Position the switch **(1)** to off (to the left) (Fig. A).
2. Remove the watch holder **(3)** from the rotating box and place the watch on the holder with the strap closed (Fig. B).
3. Reposition the holder with the watch in the vertical position (Fig. C) in the rotating cylinder **(4)** pressing it to the stop.

To take the watch off of the rotating box holder (3):

1. Position the switch **(1)** to off (to the left) (Fig. A).
2. Remove the watch holder **(3)** with the watch from the rotating box and take the watch off the stand **(3)** by compressing it or opening the strap.
3. Reposition the stand **(3)** (Fig. C) in the rotating cylinder **(4)** pressing it to the stop.



Starting and stopping the rotating box

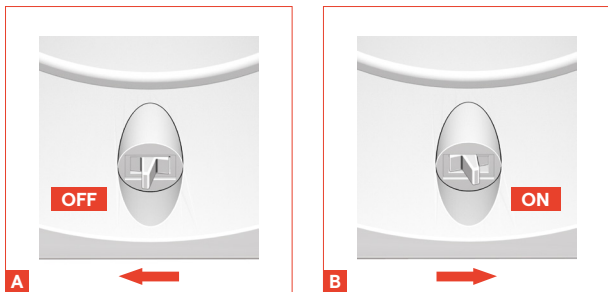


Fig. A ON position: Switch positioned to the right

Fig. B OFF position: Switch positioned to the left

When the switch is in the on position (positioned to the right), a coloured indicator light in the switch flashes red and green for a few seconds, to indicate the initialisation phase.

The watch then performs 60 cycles of 20 rotations (10 clockwise and 10 anti-clockwise), for a total of 1,200 rounds every 24 hours. Between each rotation cycle, the watch stand automatically stops in its initial vertical position.

Indications given by the indicator light

Operating mode	Battery status: OK	Battery status: Low charge	Comment:
STANDARD	1 flash GREEN / 5 sec.	1 flash RED / 5 sec.	Operation: OK
CUSTOM	2 flashes GREEN / 5 sec.	2 flashes RED / 5 sec.	Operation: OK
ABNORMAL	3 flashes RED / 5 sec.		Abnormal operation of the revolution counting

Correct operation:

In the **STANDARD** setting, the rotating box's correct operation is indicated by a green (or red depending on the battery status) indicator light **(2)** flashing at a regular interval of one pulse every 5 seconds or so. In the **CUSTOM** setting, correct operation of the rotary box is indicated by a green (or red depending on the battery status) indicator light **(2)** flashing at a regular interval of two pulses, approximately every 5 seconds.

Malfunction:

A malfunction of the revolution counting system will be indicated by a red indicator light **(2)** flashing at a steady interval of three pulses, approximately every 5 seconds. (Additional information in **troubleshooting guide**).

N.B.: In the event of a low battery charge, the indicator light **(2)** will flash red depending on the operating mode selected. The batteries must then be replaced within 3 months.

Batteries

IMPORTANT:

- In order to guarantee the correct operation of the rotating box, it is recommended to always replace the 2 batteries at the same time by new batteries of the same type.
- Rechargeable batteries must not be used.

Battery type: Two 1.5-volt ALKALINE batteries

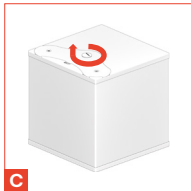
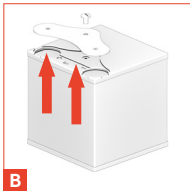
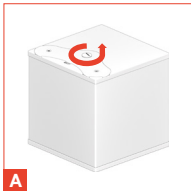
Dimensions:

- C (US)
- LR14 (IEC)
- Baby (DIN)
- AM2 (International)
- 14A (ANSI)

Recommended brands: Duracell®, Energizer®, Industrial®, Universal®, Varta®, Wonder®

To replace the batteries:

1. Unscrew the battery cover using a coin and remove it (**Fig. A**).
2. Remove the old batteries and put the two new batteries in the slots provided for this purpose (**Fig. B**). **IMPORTANT:** Make sure to respect the +/- polarities when positioning the new batteries so as not to damage the rotating box.
3. Reposition the battery cover and screw it back in with a coin (**Fig. C**).



03. Precautions of use



Precautions of use

- It is recommended that you regularly clean/dust the rotating box with a soft, slightly damp cloth and then wipe it with a dry cloth.
- In order to avoid irreversible damage to the rotating box, it is important not to expose it to water, moisture, fire or other important heat sources such as radiators or in a parked vehicle in broad daylight. Direct sunlight and major sources of UV rays can fade the colours of lacquers, polymers, woods or leathers. Areas subject to oscillating vibrations, as well as sandy or dusty areas, can also damage the rotating box's operation.
- The rotating box is designed for normal use within a temperature range of 10°C to 40°C (50°F and 104°F). Use of the box in low temperatures can significantly reduce battery life.
- The rotating box is not a toy. We therefore recommend storing it out of the reach of children.

- The rotating box, as well as new or used batteries, should not be disposed of with household waste. These items must be returned to an appropriate collection point for electrical, electronic and battery equipment recycling. By ensuring that these products are disposed of properly, potentially negative consequences for the environment and human health are prevented. Recycling materials will help conserve natural resources. For any additional information about recycling this product, we advise contacting your municipality of residence, garbage collection or the store where the product was purchased.



04.

Troubleshooting guide



Troubleshooting guide

In the event the rotating box stops or malfunctions, it is recommended that the following points be checked in this order:

1. Verify that the switch **(2)** is correctly positioned to ON (position to the right).
2. Verify that the batteries are correctly positioned (+/- battery polarity respected). Also verify that the battery cover is in contact with the batteries, the contacts are clean and that the holding screw is correctly screwed down.
3. If the malfunction persists, replace the batteries with new batteries.
4. If the malfunction persists, or if the red indicator light flashes at a steady interval of three close pulses every 5 to 10 seconds, indicating a malfunction of the revolution counting system, please contact us at **contact@swisskubik.com** or return the rotary case to an official store or retailer, along with the purchase invoice.

05. Warranty conditions



Warranty conditions

The rotating box is guaranteed for a period of 3 years from the date of purchase mentioned on the invoice against any manufacturing defect.

Not covered by the warranty are:

- Damages due to normal wear and tear of the product, such as cracks, scratches, marks, cuts, colour changes, etc.
- Damages caused by misuse or improper use of the product such as incorrect battery polarity, non-compliant batteries, mishandling of the case, shocks, breakage, etc.

Damages caused by the use of the box in a harmful environment such as wet places, exposure to water, vibrations or significant heat sources, etc.

If the defects are due to causes that are not covered by the warranty, an estimate of repair costs will be communicated to you as soon as possible. SwissKubik cannot be held responsible for damages caused by improper use of the rotating box, damages to watches or to any other property or person.

SwissKubik may change the information in this user guide at any time.

© SwissKubik SA, Geneva, Switzerland

All rights reserved

swisskubik.com