



MADE BY ZEN®



ROVE

Aroma Atomiser with Nano-mist technology  
Create Zen on the Go®

# **TABLE OF CONTENTS:**

**A. ABOUT THE ROVE**

**B. TECHNICAL SPECIFICATION**

**C. OPERATING INSTRUCTIONS**

**D. FEATURES**

**E. MAINTENANCE**

**F. TROUBLESHOOTING**

**G. WARRANTY**

**Congratulations on purchasing your MADE BY ZEN® Rove Aroma Atomiser. Please keep this manual to help you get the most out of your Rove and for maintenance.**

# A - ABOUT THE ROVE

The Rove Aroma Atomiser instantly fills your surroundings with potent scent direct from the oil bottle. Experience your favourite fragrances and blends without water. Easy to use, super sleek and portable. Perfect for any space that needs a powerful burst of scent and aromatherapy. Rove is ideal for use with pure essential oils to achieve the perfect wellbeing moment.



Rechargeable, up to  
30 hours of use



Quiet operation



Waterless technology



Compact size, ideal for  
travel, gym, office, or home



Intense scenting with  
Nano-mist technology



Suitable for use with any  
essential or fragrance oils,  
5ml, 10ml & 15ml oil bottles  
(MADE BY ZEN® oils  
recommended)

# B - TECHNICAL SPECIFICATIONS

**Model Name:** Rove Aroma Atomiser

**Model No:** EW10005A

**Product Size:**  $\Phi 69 \times 120\text{mm}$

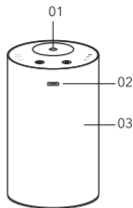
**Voltage:** DC 5V (3.7V Lithium Ion Battery)

**Power:** 5W

**Adaptor:** 5V/1A USB

**Oil Capacity:** 5ml/10ml/15ml

**Run Time:** 15-30 hours dependant on chosen scent intensity



01. Scent outlet

02. Type-C USB socket

03. External body

04. Timer button

05. Timer indication

06. Mist button

07. Mist intensity

08. Oil bottle release

09. Diffusion head

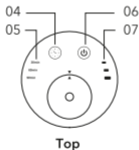
10. USB cable

11. Atomisation core

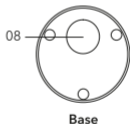
12. Anti-leakage ring

13. Oil pipettes

14. Atomisation core removal tool



Top



Base

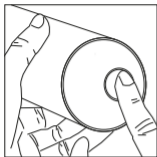


# IMPORTANT NOTES BEFORE

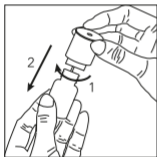
1. The Rove must always be used with the USB cable provided (as other USB cables are not compatible with this product). Insert only into a 5V/1A power source. You can also use the cable provided with a 5V/1A USB adaptor, which must be purchased separately.
2. The Rove Aroma Atomiser is not suitable to be charged in a vehicle. Please note the Rove operates with a 3.7V lithium-ion rechargeable battery, many vehicles operate at 12V, which will damage the product.
3. Place the Aroma Atomiser on a flat surface, at least 60cm away from the floor and at least 10cm away from the wall. DO NOT place the Aroma Atomiser on wooden or polished furniture that may be damaged by oil moisture.
4. Always unplug the Aroma Atomiser from the electrical supply when cleaning. Ensure the cable is secure to avoid tripping or knocking over the Aroma Atomiser. If the cable is damaged, it must be replaced with a suitable cable provided by the manufacturer or its agent.
5. The Aroma Atomiser must be kept out of reach from children and pets to avoid risk of injury. Children should be supervised at all times to ensure they do not play with the appliance.
6. The Aroma Atomiser is not intended for use by persons (including children) with reduced physical, sensory, or mental capabilities or lack of experience and knowledge, unless they have been given supervision or instruction concerning use of the appliance by a person responsible for their safety.
7. Keep the Aroma Atomiser in a clear space to allow the mist to freely spread and away from appliances especially those sensitive to oil to avoid unnecessary accidents.

8. The Aroma Atomiser must be cleaned after each use and should always be kept clean and dry when not in use. Remove the Atomiser diffusion head from the body, if not in use for prolonged periods.
9. Never attempt to disassemble your Aroma Atomiser or repair the product, as this will void your warranty and create a shock hazard. Contact your retailer if an internal inspection is required.
10. In case of abnormal observations such as smoke, peculiar smells, or noise, stop using the Aroma Atomiser immediately and contact the retailer from where you purchased it. Never wrap the Aroma Atomiser with cloth or paper as blocking ventilation could increase the risk of fire.
11. Always handle the Aroma Atomiser with care - accidental damage is not covered under the warranty.
12. Never cover the scent outlet when the aroma atomiser is in operation.
13. Always plug the adaptor into the USB socket before plugging into the mains.
14. Do not touch, plug, or unplug the Aroma Atomiser with wet hands.
15. Do not immerse the unit in water or other liquids and do not attempt to clean in a dishwasher.
16. Keep away from open flames, extended exposure may create risk of explosion. Store at room temperature. Do not use this product when temperature is too high or too low,  $<10^{\circ}\text{C}$   $>40^{\circ}\text{C}$ .
17. Always check with your airline before travelling with Rove on an aircraft.

# C - OPERATING INSTRUCTIONS



1. To release the diffusion head, firmly press the oil bottle upwards from the base.

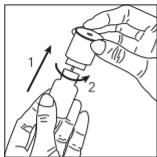


2. Unscrew the empty oil bottle provided and replace with a MADE BY ZEN® essential or fragrance oil bottle. The dropper insert will need to be carefully removed from the neck of the oil bottle, before screwing into the diffusion head.

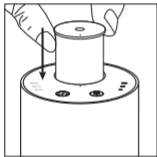
Alternatively, decant the essential or fragrance oil directly into the empty oil bottle provided.



Note the Rove is compatible with 5ml, 10ml and 15ml oil bottles, simply change the oil pipette to the correct length depending on the bottle size. The oil pipette should remain in a straight vertical position and not bend inside the bottle (additional oil pipettes provided).



3. Insert the diffusion head into the oil bottle and screw to secure in place.



4. Insert the diffusion head into the main body, align the indication arrows and push down ensuring the diffusion head sits flush with the external body.



Once the oil bottle is installed do not lean, move, or attempt to empty or refill the Rove during operation. If any oil is drained into the air pump through incorrect use, this will damage the air pump and cause permanent damage to the product.



# BUTTON FUNCTIONS

## SCENT INTENSITY

- > Press and hold ☺ to switch on the Rove, this will activate the low-level scent intensity. (Recommended for smaller spaces)
- > Press ☺ again to activate mid-level scent intensity.
- > Press ☺ again to activate high-level scent intensity.
- > Press ☺ again to switch off.



☺	Low scent intensity
☺	10 sec. burst / 60 sec. pause
☺	30 hours of use
☺	Mid scent intensity
☺	20 sec. burst / 60 sec. pause
☺	20 hours of use
☺	High scent intensity
☺	30 sec. burst / 60 sec. pause
☺	15 hours of use

## TIMER CONTROL

Choose your run time - this feature will only operate once the Rove is switched on.

- > Press 🌀 for 30 minute timer
- > Press 🌀 again for 60 minute timer
- > Press 🌀 again for 90 minute timer
- > Press 🌀 again to switch off the timer setting, the Rove will continue to scent at the chosen intensity level until switched off.



At any point during operation, you wish to turn off the Rove, press and hold the ☺ or 🌀 button.

**Note: To avoid fast oil consumption, the Rove will automatically shut off after 4 hours of continuous use.**

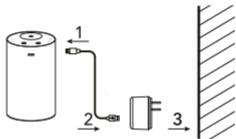
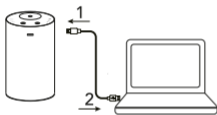



30min	Auto shut off after 30 minutes
60min	Auto shut off after 60 minutes
90min	Auto shut off after 90 minutes

# CHARGING


The  button will flash repeatedly to indicate the Rove needs to be charged. Please note when using the timer setting, the  button will not flash, the Rove will simply switch off when the battery is fully discharged.

1. Plug the cable into the USB socket before connecting to the 5V/1A USB power point or 5V/1A adaptor (not included).



2. Once connected properly the  button will flash to show the Rove is being charged.



3. The  button will stop flashing and remain on, to show the Rove is fully charged (time to full charge approx. 2-3hours).

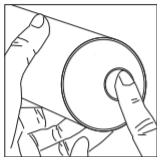
## D - FEATURES

The Rove Aroma Atomiser provides a revolutionary way to fragrance your surroundings. Nano-mist technology releases potent particles of beautiful scent direct from the oil bottle without the need for water or heat. Powerful scenting for effortless aromatherapy and wellbeing.

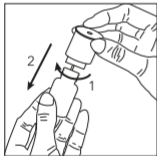
- Rechargeable and compact, the ideal travel companion
- Sleek anodised aluminium material finish
- Compatible with 5ml, 10ml and 15ml oil bottles
- Soft touch button interface
- Quiet operation
- Auto-shut off after 4 hours of use
- Easy to clean and use

# E - MAINTENANCE

Please ensure the Rove is switched off and not connected to the power source.



1. Release the diffusion head by firmly pressing the oil bottle upwards from the base.



2. Unscrew the oil bottle and decant any remaining oil from the bottle.



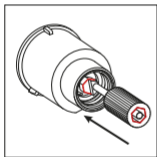
3. Fill the empty oil bottle half way with rubbing alcohol under 75% concentration. Switch on for minimum of 10mins, maximum 1 hour. (Follow operating instructions to switch on the Rove).



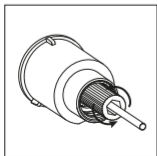
4. Unscrew the oil bottle and pour out any remaining alcohol. Wipe the diffusion head and oil pipette with a clean, soft cloth and leave to dry.

## CHANGING ATOMISATION CORE

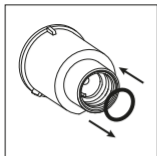
Remove the diffusion head and oil bottle following maintenance steps 1 & 2.



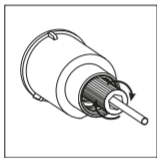
1. To release the atomisation core and oil pipette, align the hexagonal shape of the replacement tool and atomisation core (as highlighted in red).



2. Unscrew using the replacement tool to release the atomisation core and oil pipette.



3. Remove the anti-leakage ring and replace with new one provided.



4. Replace with new atomisation core, using the replacement tool.

We suggest you clean the Rove after using a full oil bottle or when changing to a new scent as this will prevent scent contamination. If the oil bottle still contains oil, please decant before adding the alcohol as per instructions in the maintenance section.

Never use alcohol above 75% concentration as it may damage the unit. Alcohol is flammable, ensure the room is well ventilated to prevent risk of fire.

- Always keep the Rove clean and dry when not in use.
- Never leave stagnant oil inside the Rove for prolonged periods. If unused for a long period of time, please remove the diffusion head from the main body and store separately.
- When cleaning, always ensure no oil/alcohol enters the USB socket power port. Wipe clean and allow the unit to dry thoroughly if any oil/alcohol accidentally enters the electrical port. Do not plug in the cable if there is residue oil/alcohol in the USB socket.

# F - TROUBLESHOOTING

Problem	Possible Cause	Solution
Unit will not switch on	The unit needs to be charged	Plug the USB cable into a 5V/1A power source to charge the unit. Or use a 5V/1A power adaptor to plug into mains power source. The power button will flash to indicate the unit is charging
	The power cable may not be connected properly	Disconnect the cable and try connecting properly. The power button will flash to indicate the unit is charging
Unable to remove the diffusion head	The diffusion head has been inserted into the main body without an oil bottle	Gently press up on the oil pipette from the base using a flat surfac.
	The diffusion head and main body indication arrows are not aligned	Firmly press the oil bottle upwards from the base and realign the indication arrows
Oil leaking	The oil bottle is not securely fastened in the diffusion head	Ensure the oil bottle is screwed into the diffusion head correctly
	The unit has been placed on its side or upside down	Follow the steps in the maintenance section
	The anti-leakage ring is missing	Ensure the anti-leakage ring is in place, see maintenance section
Scent cross over	There is residue of the previous oil in the diffusion head	Clean as advised in the maintenance section, if cleaning isn't successful change the atomisation core as per instructions
There is no mist visible, or the mist visibility is low	Type of oil	Depending on the properties of the oil the mist may not be visible. This is not unusual and should not be considered as a fault. The level of scent diffusion will not be affected

## G - WARRANTY

This product carries a 12-month warranty for proper use in accordance with this manual against any manufacturing defects. Accidental damage is not covered under the warranty, including glass breakage. The warranty period is 12 months from the date of purchase. In case of any problems arising during the warranty period, please contact your retailer for maintenance or claims. Proof of purchase will be required, so it is vital that you keep your receipt of purchase with this manual safely.

Corrosive oils such as Citronella may cause damage to the unit. This type of damage is not covered under the warranty. This Aroma Atomiser must be cleaned after each use.



**IMPORTANT!**

MADE BY ZEN® products comply with the WEEE Directive (Waste from Electrical and Electronic Equipment Directive) 2012/19/EU.

Electrical equipment is a large source of waste and if not properly recycled could have damaging effects on the environment, whereas if it is recycled, the resources could be used again. Electronic waste needs to be separated from other waste to be recycled properly.

When the Rove Aroma Atomiser reaches the end of its working life, please deposit at an appropriate collection point for recycling of electrical products. You can also recycle used electronics at Household Waste Recycling Centres.

Caring for our planet is important to us, so please help us by disposing of the Rove correctly. Thank You.





MADE BY ZEN®