



MADE BY ZEN®

L O N D O N



LIV STONE

Portable USB aroma diffuser  
with an ambient light

# **TABLE OF CONTENTS:**

**A. ABOUT THE LIV STONE**

**B. TECHNICAL SPECIFICATION**

**C. OPERATING INSTRUCTIONS**

**D. FEATURES**

**E. MAINTENANCE**

**F. TROUBLESHOOTING**

**G. WARRANTY**

Thank you for purchasing the MADE BY ZEN® Liv Stone Aroma Diffuser.


# A - ABOUT THE LIV STONE


Liv releases a cool scented mist to fill the air with the benefits of aromatherapy for up to 4 hours. Compact in size and conveniently USB operated, simply plug Liv into your laptop to instil calm, boost your mood or improve focus during your busy working day.

In a cool pebble grey with an ambient halo of light, it's a chic and stylish desk accessory. Use with essential oils for a calming diffusion to improve your mental wellbeing whilst on-the-go.

 USB Powered

 Ambient light band

 Compact size, ideal for travel, office or home

 Suitable for use with any essential or fragrance oils  
(MADE BY ZEN® oils recommended)

# B - TECHNICAL SPECIFICATIONS

**Model Name:** Liv Stone Aroma Diffuser

**Model No:** EW056-2S

**Product Size:**  $\Phi 90 \times 73.5 \text{mm}$

**Power:** 5W

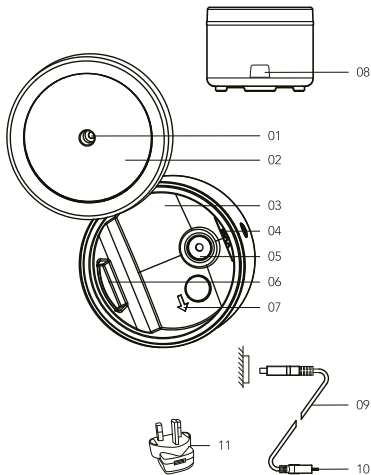
**Voltage:** DC 5V

**Adaptor Specification:** 5V/1A

**Water Capacity:** 70ml

**Run Time:** 4+hours

- 01. Mist Outlet
- 02. Cover
- 03. Water Tank
- 04. Max. Water Level Line
- 05. Ceramic Disc
- 06. Vent Hole
- 07. Water Drainage Direction
- 08. Stopper
- 09. USB Cable
- 10. DC Jack
- 11. Mains USB Adaptor  
(not included but available to purchase separately)



# IMPORTANT NOTES BEFORE

The aroma diffuser **MUST** be cleaned before and after each use. When stored the unit should **always** be kept clean and dry. **NEVER** leave stagnant oil and water in the water tank for any prolonged period.

Whilst using your diffuser, you **MUST** clean the water tank every 3 days:



**Micro-organisms that may be present in the water or in the environment where the appliance is used or stored, can develop in the water reservoir, and expelled into the air when next used causing very serious health risks. To prevent this the water tank **MUST** be cleaned properly every 3 days.**

Der Aroma diffuser **MUSS** vor und nach jeder Verwendung gereinigt werden. Das Gerät sollte immer in einem sauberen und trockenen Zustand gelagert werden. Lassen Sie **NIE** über einen längeren Zeitraum Öl und Wasser im Wassertank stehen.

Während der Verwendung Ihres Diffusers **MÜSSEN** Sie den Wassertank **alle** drei Tagen reinigen:



**Eventuell im Wasser oder der Umgebung, in der das Gerät verwendet bzw. gelagert wird, vorhandene Mikroorganismen können sich im Wassertank weiterentwickeln, bei der nächsten Verwendung in die Luft austreten und somit äußerst ernsthafte Gesundheitsrisiken hervorrufen. Zur Vermeidung dessen **MUSS** der Wassertank alle drei Tage ordentlich gereinigt werden.**

يجب تنظيف الفواحة العظرية قبل وبعد كل استعمال. في حال حفظ وتخزين الجهاز، يجب دومًا المحافظة عليه نظيفًا وجافًا. لا تترك بقايا الزيت والماء الراكد أيضًا في خزان الماء لمدة طويلة جدًا.

أثناء استعمال الفواحة العظرية، يجب عليك تنظيف خزان الماء كل ٣ أيام.



يمكن للكائنات الدقيقة التي قد تكون موجودة في الماء أو في البيئة في حال استخدام الجهاز أو تخزينه أن تنمو في خزان الماء، وتنتشر في الهواء، وسوف يتسبب الاستعمال التالي للجهاز بأخطار صحية كبيرة جدًا. لحماية خزان الماء، يجب لتظيفه على نحو مناسب كل ٣ أيام (٧٢ ساعة).

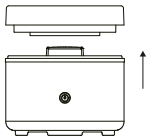
1. The LIV must always be used with the USB cable provided (as other USB cables are not compatible with this product). Insert only into a 5V/1A power source. You can also use the cable provided with a 5V/1A USB adaptor, which must be purchased separately.
2. The LIV diffuser is supplied with a Stopper for your convenience. Insert the Stopper into the DC Jack during cleaning to avoid water entering into this area. Do not worry if you lose or misplace the Stopper, as this will not affect the performance of the product. Just take extra care when cleaning, to ensure that water does not enter the DC Jack (see maintenance).
3. Ensure that the mist is not too close to any material sensitive to water and take care not to spill water around your computer.
4. The LIV aroma diffuser is not suitable for use in vehicles. Please note the LIV operates with a 5V power, many vehicles operate at 12V, which will damage the diffuser.
5. Place the aroma diffuser on a flat surface, at least 60cm away from the floor and at least 10cm away from the wall. DO NOT place the aroma diffuser on wooden or polished furniture that may be damaged by water moisture.
6. Always unplug the aroma diffuser from the electrical supply when cleaning or filling with water. Always use the power adaptor supplied. Ensure the cable is secure to avoid tripping or knocking over the aroma diffuser. If the power adaptor is damaged, it must be replaced with a suitable adaptor provided by the manufacturer or its agent. Alternatively, a new adaptor can be purchased from your retailer.
7. Use a suitable measuring cup to fill the water into the water tank. Never attempt to fill water under a running tap or whilst plugged in. Do not fill the water beyond the max water level line. If overfilled, carefully remove the excess water from the tank in the 'drainage direction' as shown by the arrow and away from the vent hole.
8. The aroma diffuser must be kept out of reach from children and pets to avoid risk of injury. Children should be supervised at all times to ensure they do not play with the appliance.

9. The aroma diffuser is not intended for use by persons (including children) with reduced physical, sensory or mental capabilities or lack of experience and knowledge, unless they have been given supervision or instruction concerning use of the appliance by a person responsible for their safety.
10. Keep the aroma diffuser in a clear space to allow the mist to freely spread and away from appliances especially those sensitive to water to avoid unnecessary accidents.
11. The aroma diffuser must be cleaned after each use and should always be kept clean and dry when not in use. Never leave stagnant oil and water in the water tank for prolonged periods.
12. Never attempt to disassemble your aroma diffuser or repair the product, as this will void your warranty and create a shock hazard. Contact your retailer if an internal inspection is required.
13. In case of abnormal observations such as smoke, peculiar smells or noise, stop using the aroma diffuser immediately and contact the retailer from where you purchased it. Never wrap the aroma diffuser or adaptor with cloth or paper as blocking ventilation could increase the risk of fire.
14. Always handle the aroma diffuser with care, accidental damage is not covered under the warranty.
15. Always use water at room temperature and use only fresh, clean water from a reliable source. Do not fill the water tank with other chemicals or liquids other than water and a few drops of fragrance or essential oils.
16. Never touch the water within the water tank when the diffuser is in operation as the water may become warm. It is perfectly normal for the water temperature to increase over time. Especially if it has been running for a few hours. This is caused by the energy created from the vibrating disc. The water should not exceed 40°C but for some models it can increase to 50°C (+/-5°C). However, as the mist dissipates from the mist outlet, the water temperature cools rapidly due to the large surface area of each droplet, hence the mist is referred to as a 'cool mist'.

17. Always plug the adaptor into the DC jack before plugging into the mains.
18. Do not remove the cover during operation.
19. NEVER touch the ultrasonic ceramic disc while the diffuser is plugged in as this could cause serious injury.
20. Do not touch, plug or unplug the aroma diffuser with wet hands.
21. Do not immerse the unit in water or other liquids and do not attempt to clean in a dishwasher.



# C - OPERATING INSTRUCTIONS



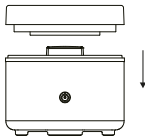
1. Place the diffuser on a firm and flat surface, in upright direction. Remove the cover upward carefully as shown.



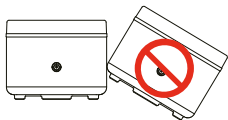
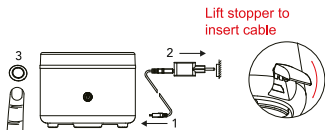
2. Add water to the water tank with a suitable measuring cup until the water reaches the max. water level line as shown.



3. Add 3-5 drops of your favourite fragrance or essential oil into the water.



4. Replace the cover as shown.





5. Plug the cable into the DC jack before placing the USB port into the power supply or mains .

Press the  button to turn on the unit

**Note: Do not lean or move or attempt to empty or refill the diffuser during operation.**

## BUTTON FUNCTIONS

> Press  **BUTTON once** the ambient light will switch on and the diffuser will begin to mist. When the water level runs low the Liv will switch off automatically.

> Press  **BUTTON twice** the ambient light will switch off but the diffuser will continue to mist. When the water level runs low the Liv will switch off automatically.

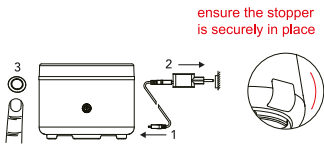
> Press  **BUTTON three times** to turn off the mist function.


## D - FEATURES

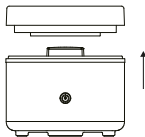
The Liv Stone Ultrasonic Aroma Diffuser provides a revolutionary way to fragrance your surroundings. It works by creating high frequency vibrations that breaks down the water and oil into minute particles which are then effectively diffused into the immediate surroundings.

- Compact, on the go solution
- Suitable for use in home, office & hotel rooms
- Comes with USB cable (mains adaptor can be purchased separately)
- Can be used with ambient lighting or without the light.
- Quiet operation
- Auto-shut off when water runs out for an additional safety
- Easy to clean and use

# E - MAINTENANCE



1. Press and hold the  button for a few seconds to switch off the aroma diffuser and unplug the USB cable from the power source.

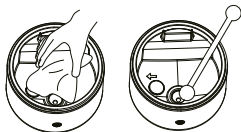


2. Remove the cover upwards carefully as shown.



**WARNING:**  
**DO NOT EMPTY WATER**  
**FROM THE VENT HOLE**

3. Empty water via the water drainage side, as shown by the arrow at the base of the water tank



4. Use a clean swab or cloth to clean the unit.

**Caution:** Always switch off the appliance and disconnect the power source from electrical outlet before cleaning.

Always keep your aroma diffuser clean and dry when not in use.

Never leave stagnant oil and water inside the tank for prolonged periods. If the aroma diffuser stops generating mist (or generates little mist), clean the ceramic disc as indicated above. For stubborn oil build up, use sanitary alcohol on a cotton bud if required.

When cleaning, always take extra care to ensure water does not enter DC Jack power port. Allow the unit to dry thoroughly as advised below if water accidentally enters the electrical port.

**Accidental Leakage:** In the event of the aroma diffuser being knocked over during use, please follow the steps below to avoid malfunction.

- Unplug the diffuser from the mains and remove the cover carefully.
- Pour out any remaining water from the tank.
- Shake the diffuser gently to drain any water from inside, then leave for 24 hours for the diffuser to dry thoroughly in a well-ventilated area.

# F - TROUBLESHOOTING

Problem	Possible Cause	Solution
No Mist or mist volume significantly reduced	Power supply is not connected	Ensure cable is securely in place and switch on the unit.
	Water is lower than the water level sensor	Refill the tank with ordinary tap water. Take care not to fill past the max water level line.
	Water is exceeding the max water level line	Carefully pour out excess water in the drainage direction shown by the arrow.
	There may be a build-up of oil on the ceramic disc	Clean the ceramic disc with water and a clean cloth.
	Mist outlet is blocked	Clean the mist outlet by thoroughly cleaning the inside of the cover with clean water.
	The air inlet is blocked	Ensure there is no dirt or dust obstructing air inlet. See maintenance section.
Unit will not switch on	There is an insufficient amount of water in the tank	Fill the water tank with water up to the max water level line. Do not over fill.
	The power cable may not be connected properly	Disconnect the cable and try connecting properly.
Water is leaking from the product	The cover is not positioned correctly	Remove the covers and replace correctly allowing mist to release correctly.
	The unit has been tipped or knocked over	Follow the accidental leakage instructions.
	The temperature is low or there is high humidity	Under these conditions the mist can sometimes condense into water droplets.
	Water moisture has built up inside the cover	Remove the inner cover and dry off excess water from the inside of the cover.

**The intensity and amount of mist may vary, but this is not unusual and should not be considered as a fault. Factors that may affect this include water type, humidity, temperature, air currents etc.**

## G - WARRANTY

This product carries a 12-month warranty for proper use in accordance with this manual against any manufacturing defects. Accidental damage is not covered under the warranty.

The warranty period is 12 months from the date of purchase. In case of any problems arising during the warranty period, please contact your retailer for maintenance or claims. Proof of purchase will be required, so it is vital that you keep your receipt of purchase with this manual safely.

Corrosive oils such as Citronella may cause damage to the unit if left in the water tank. This type of damage is not covered under the warranty. This aroma diffuser must be cleaned after each use.



### IMPORTANT!

MADE BY ZEN® ultrasonic aroma diffusers comply with the WEEE Directive (Waste from Electrical and Electronic Equipment Directive) 2012/19/EU.

Electrical equipment is a large source of waste and if not properly recycled could have damaging effects on the environment, whereas if it is recycled, the resources could be used again.

Electronic waste needs to be separated from other waste to be recycled properly. When the Liv Stone Aroma Diffuser reaches the end of its working life, please deposit at an appropriate collection point for recycling of electrical products. You can also recycle used electronics at Household Waste Recycling Centres.

Caring for our planet is important to us, so please help us by disposing of the Liv Stone correctly. Thank you.



MADE BY ZEN®

L O N D O N