



MADE BY ZEN®



JASPER

Hand-blown marbled glass Aroma Diffuser
with a soft ambient light

TABLE OF CONTENTS:

A. ABOUT THE JASPER

B. TECHNICAL SPECIFICATION

C. OPERATING INSTRUCTIONS

D. FEATURES

E. MAINTENANCE

F. TROUBLESHOOTING

G. WARRANTY

Congratulations on purchasing your **MADE BY ZEN® Jasper Aroma Diffuser**. Please keep this manual to help you get the most out of your Jasper and for maintenance.

A - ABOUT THE JASPER

The Supreme Nurturer, bringer of tranquillity, calm and strength. The MADE BY ZEN® Jasper diffuser positively embraces and embodies the serene, nurturing character of its name-sake. Featuring a soft, warm light that radiates out through the glass cover reminiscent of lustrous polished gemstone, the Jasper is a beautiful addition to the modern home.

With several different light and mist settings the Jasper is extremely versatile. Relax and unwind as you bask in the comforting glow of the Jasper's light and feel cool, scented, revitalising mist wash away the stresses of life, or use the Jasper's no-light mode and intermittent-mist settings for a gloriously restful night's sleep.

Combining a classic and elegant design with state of the art ultrasonic technology, the Jasper adds a touch of luxury to any home with its subtle light and plume of divine fragrance and humidifying mist.



Warm, ambient LED lighting which can help you to relax.

- Soft glow, fixed ambient light
- Breathing light, can be used to aid mindful relaxation



Sleep mode (no light) option



Constant Mist & Intermittent Mist setting, ideal for diffusing stronger scents or getting a strong burst of fragrance or humidity into the air.



Suitable for use with any essential or fragrance oils (MADE BY ZEN® oils recommended)

Thank you for purchasing the MADE BY ZEN® Jasper Aroma Diffuser.

B - TECHNICAL SPECIFICATIONS

Model Name: Jasper Aroma Diffuser

Model No: EW054

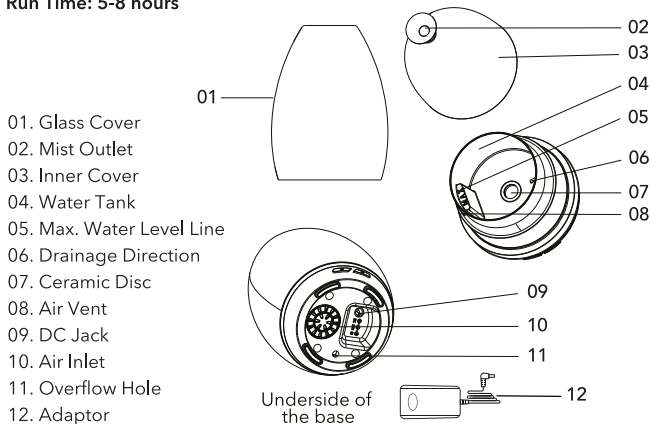
Product Size: Ø105 x 182mm

Voltage: DC 24V

Power: 9W

Water Capacity: 130ml

Run Time: 5-8 hours



IMPORTANT NOTES BEFORE

The Aroma Diffuser **MUST** be cleaned before and after each use. When stored the unit should always be kept clean and dry. **NEVER** leave stagnant oil and water in the water tank for any prolonged period.

Whilst using your diffuser, you **MUST** clean the water tank every 3 days:



Micro-organisms that may be present in the water or in the environment where the appliance is used or stored, can develop in the water reservoir, and expelled into the air when next used causing very serious health risks. To prevent this the water tank **MUST be cleaned properly every 3 days.**

Der Aromadiffuser **MUSS** vor und nach jeder Verwendung gereinigt werden. Das Gerät sollte immer in einem sauberen und trockenen Zustand gelagert werden. Lassen Sie NIE über einen längeren Zeitraum Öl und Wasser im Wassertank stehen.

Während der Verwendung Ihres Diffusers **MÜSSEN** Sie den Wassertank **alle** drei Tagen reinigen:



Eventuell im Wasser oder der Umgebung, in der das Gerät verwendet bzw. gelagert wird, vorhandene Mikroorganismen können sich im Wassertank weiterentwickeln, bei der nächsten Verwendung in die Luft austreten und somit äußerst ernsthafte Gesundheitsrisiken hervorrufen. Zur Vermeidung dessen **MUSS der Wassertank alle drei Tage ordentlich gereinigt werden.**

يجب تنظيف الفواحة العطرية قبل وبعد كل استعمال. في حال حفظ وتخزين الجهاز، يجب دومًا المحافظة عليه نظيفًا وجافًا. لا تترك بقايا الزيت والماء الرாகد أبدًا في خزان الماء لمدة طويلة جدًا.

أثناء استعمال الفواحة العطرية، يجب عليك تنظيف خزان الماء كل ٣ أيام.



يمكن للكائنات الدقيقة التي قد تكون موجودة في الماء أو في البيئة في حال استخدام الجهاز أو تخزينه أن تلمو في خزان الماء، وتنتشر في الهواء، وسوف يتسبب الاستعمال التالي للجهاز بأخطار صحية كبيرة جدًا. لحماية خزان الماء، يجب تنظيفه على نحو مناسب كل ٣ أيام (٧٢ ساعة).

1. Place the Aroma Diffuser on a flat surface, at least 60cm away from the floor and at least 10cm away from the wall. DO NOT place the Aroma Diffuser on wooden or polished furniture that may be damaged by water moisture.
2. Always unplug the Aroma Diffuser from the mains electrical supply when cleaning or filling with water. Always use the power adaptor supplied. Ensure the cable is secure to avoid tripping or knocking over the Aroma Diffuser. If the power adaptor is damaged, it must be replaced with a suitable adaptor provided by the manufacturer or its agent. Alternatively, a new adaptor can be purchased from your retailer.
3. Use a suitable measuring cup to fill the water into the water tank. Never attempt to fill water under a running tap or whilst plugged in. Do not fill the water beyond the max water level line. If overfilled, carefully remove the excess water from the tank in the 'drainage direction' as shown by the arrow and away from the vent hole.
4. The Aroma Diffuser must be kept out of reach from children and pets to avoid risk of injury. Children should be supervised at all times to ensure they do not play with the appliance.
5. The Aroma Diffuser is not intended for use by persons (including children) with reduced physical, sensory or mental capabilities or lack of experience and knowledge, unless they have been given supervision or instruction concerning use of the appliance by a person responsible for their safety.
6. Keep the Aroma Diffuser in a clear space to allow the mist to freely spread and away from appliances especially those sensitive to water to avoid unnecessary accidents.
7. The Aroma Diffuser must be cleaned after each use and should always be kept clean and dry when not in use. Never leave stagnant oil and water in the water tank for prolonged periods.
8. Never attempt to disassemble your Aroma Diffuser or repair the product, as this will void your warranty and create a shock hazard. Contact your retailer if an internal inspection is required.

9. In case of abnormal observations such as smoke, peculiar smells or noise, stop using the Aroma Diffuser immediately and contact the retailer from where you purchased it. Never wrap the aroma diffuser or adaptor with cloth or paper as blocking ventilation could increase the risk of fire.

10. Always handle the Aroma Diffuser with care – accidental damage is not covered under the warranty.

11. Always use water at room temperature and use only fresh, clean water from a reliable source. Do not fill the water tank with other chemicals or liquids other than water and a few drops of fragrance or essential oils.

12. Never touch the water within the water tank when the diffuser is in operation as the water may become warm. It is perfectly normal for the water temperature to increase over time. Especially if it has been running for a few hours. This is caused by the energy created from the vibrating disc. The water should not exceed 40°C but for some models it can increase to 50°C (+/- 5°C). However, as the mist dissipates from the mist outlet, the water temperature cools rapidly due to the large surface area of each droplet, hence the mist is referred to as a 'cool mist'.

13. Always plug the adaptor into the DC jack before plugging into the mains.

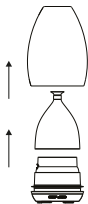
14. Do not remove the covers during operation.

15. NEVER touch the ultrasonic ceramic disc while the diffuser is plugged in as this could cause serious injury.

16. Do not immerse the unit in water or other liquids and do not attempt to clean in a dishwasher.

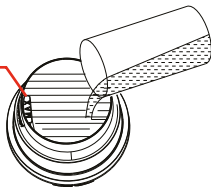
17. When using the light only mode, the standby mode will not operate. Switch off the light as per the instructions on the next page.

C - OPERATING INSTRUCTIONS



1. Place the diffuser on a firm and flat surface, in upright direction. Remove the glass cover and inner cover upward carefully as shown.

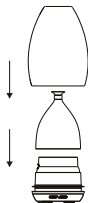
DO NOT EXCEED MAX.
WATER LEVEL LINE



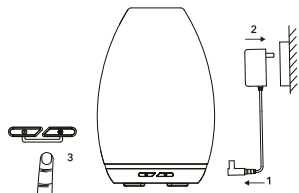
2. Add water to the water tank with a suitable measuring cup until the water reaches the max. water level line as shown.



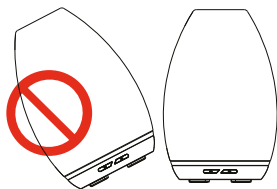
3. Add 3-5 drops of your favourite fragrance or essential oil into the water.



4. Replace the inner cover followed by the glass cover.



5. Plug the cable into the DC Jack before connecting the adaptor to the power source.



Note: Do not lean or move or attempt to empty or refill the diffuser during operation.

BUTTON FUNCTIONS


MIST CONTROL


>Press **⏻** **once** to operate the mist function. The Aroma Diffuser will mist continuously until the water level runs low. At this point the Jasper will switch off automatically.


>Press **⏻** **twice** to operate the intermittent mist function. The Aroma Diffuser will mist intermittently; 30 seconds on / 30 seconds off and will continue until the water level runs low. At this point the Jasper will switch off automatically.


>Press **⏻** **three times** to turn off the mist function.

LIGHT CONTROL

>Press  **once** to switch on the light function. The Jasper will operate with the breathing light mode (where the intensity of the LED light fades and then brightens gradually).

>Press  **twice** to fix the intensity at your preferred level of brightness.

>Press  **three** times to turn off the light mode. Please note that the mist and light modes operate independently. This allows you to switch off the light whilst the unit is still misting; ideal for night time use.

Please note the auto-shut off will only operate when the mist function is being used. During the light only mode, you will have to manually switch off the light by pressing the LIGHT  button three times.

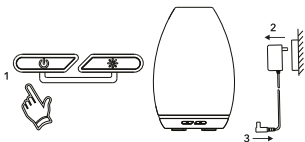
D - FEATURES

The Jasper ultrasonic Aroma Diffuser provides a revolutionary way to fragrance your surroundings. It works by creating high frequency vibrations that breaks down the water and oil into minute particles which are then effectively diffused into the immediate surroundings.

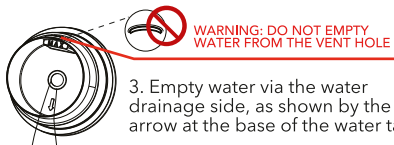
- Aroma Diffuser: Can be used with ambient lighting or without the light, ideal for night time use.
- Night Lamp: Can be used without mist, ideal as a night light.
- Low energy LED lights.
- Mini humidifier.
- Quiet operation.
- Auto-shut off when water runs out for additional safety.
- Easy to clean and use.

Note: Auto shut off does not operate when using light only mode.

E - MAINTENANCE

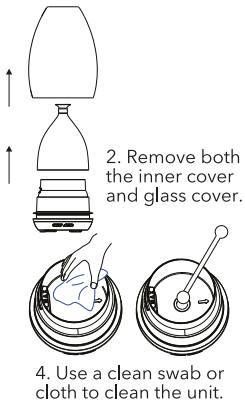


1. Make sure the light and mist functions have been switched off and unplug the power from the mains.



WARNING: DO NOT EMPTY WATER FROM THE VENT HOLE

3. Empty water via the water drainage side, as shown by the arrow at the base of the water tank.



2. Remove both the inner cover and glass cover.

4. Use a clean swab or cloth to clean the unit.

Caution: Always switch off the appliance and disconnect the power source from electrical outlet before cleaning.

Always keep your aroma diffuser clean and dry when not in use.

Never leave stagnant oil and water inside the tank for prolonged periods.

For stubborn oil build up, use sanitary alcohol on a cotton bud if required.

If the aroma diffuser does not generate mist (or generates little mist), clean the ceramic disc.

When cleaning, always take extra care to ensure water does not enter DC Jack power port.

Allow the unit to dry thoroughly as advised below if water accidentally enters the electrical port.

Accidental Leakage: In the event of the aroma diffuser being knocked over during use, please follow the steps below to avoid malfunction.

- Unplug the diffuser from the mains and remove the cover carefully.
- Pour out any remaining water from the tank.
- Shake the diffuser gently to drain any water from inside, then leave for 24 hours for the diffuser to dry thoroughly in a well-ventilated area.

F - TROUBLESHOOTING

Problem	Possible Cause	Solution
No Mist or mist volume significantly reduced	Power supply is not connected	Plug in the power adaptor and press the button on the base.
	Water is lower than the water level sensor	Refill the tank with ordinary tap water. Take care not to fill past the max water level line
	Water is exceeding the max water level line	Carefully pour out excess water in the drainage direction as shown by base arrow
	There may be a build-up of oil on the ceramic disc	Clean the ceramic disc with water and a clean cloth
	Mist outlet is blocked	Clean the mist outlet by thoroughly cleaning the inside of the cover with clean water
Unit will not switch on	There is an insufficient amount of water in the tank	Fill the water tank with water up to the max water level line. Do not over fill
	The power cable may not be connected properly	Disconnect the cable and try connecting properly
Water is leaking from the product	The cover is not positioned correctly	Remove the covers and replace correctly allowing mist to release correctly
	The unit has been tipped or knocked over	Follow the accidental leakage instructions
	The temperature is low or there is high humidity	Under these conditions the mist can sometimes condense into water droplets
	Water moisture has built up inside the cover	Remove the inner cover and dry off excess water from the inside of the cover

The intensity and amount of mist may vary, but this is not unusual and should not be considered as a fault. Factors that may affect this include water type, humidity, temperature, air currents etc.

G - WARRANTY

This product carries a 12-month warranty for proper use in accordance with this manual against any manufacturing defects. Accidental damage is not covered under the warranty, including glass breakage. The warranty period is 12 months from the date of purchase. In case of any problems arising during the warranty period, please contact your retailer for maintenance or claims. Proof of purchase will be required, so it is vital that you keep your receipt of purchase with this manual safely.

Corrosive oils such as Citronella may cause damage to the unit if left in the water tank. This type of damage is not covered under the warranty. This Aroma Diffuser must be cleaned after each use.

Due to the artisanal processes involved with hand made glass, there may be some imperfections in the glass cover, this is not a defect, but part of the beauty of working with natural materials. There may be some variations to the glass design than that illustrated.



IMPORTANT!

MADE BY ZEN® Ultrasonic Aroma Diffusers comply with the WEEE Directive (Waste from Electrical and Electronic Equipment Directive) 2019/19/EU.

Electrical equipment is a large source of waste and if not properly recycled could have damaging effects on the environment, whereas if it is recycled, the resources could be used again.

Electronic waste needs to be separated from other waste to be recycled properly. When the Jasper Aroma Diffuser reaches the end of its working life, please deposit at an appropriate collection point for recycling of electrical products. You can also recycle used electronics at Household Waste Recycling Centres.

The glass cover is recyclable.

Caring for our planet is important to us, so please help us by disposing of the Jasper correctly. Thank You.