



MADE BY ZEN®



EVA

Mini Ultrasonic Diffuser
Zen on the Go®

ABOUT THE EVA

The ultimate in on the go self care, Eva combines state of the art ultrasonic technology with chic, modern design. It is the perfect, pocket sized, hydration and relaxation tool, creating a wonderfully relaxing and cooling mist.

This mist penetrates the skin quickly and effectively, helping to moisturise and nourish the hands body and face, even over make up!

Eva is rechargeable and spill proof, making it the ideal portable facial mister and diffuser.



Innovative ultrasonic technology to create a fine mist which is easily absorbed into skin



Compact size, ideal for travel, gym, office or home



Rechargeable



Use with tap, purified or spring water for an instant burst of hydration



Suitable for use with any essential or fragrance oils (MADE BY ZEN® oils recommended)

TECHNICAL SPECIFICATIONS

Model Name: Eva Mini Ultrasonic Diffuser

Model No: EWT709 W

Product Size: 32mm x 32mm x 100mm

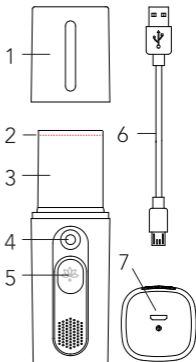
Voltage: DC 5V (3.7V Lithium Ion Battery)

Power: 1W

Water Capacity: 15ml

Run Time: 60 seconds continuous mist

- 01. Cover
- 02. Max. Water Level Line
- 03. Water Tank
- 04. Mist Output
- 05. On/Off Button
- 06. USB Charging Cable
- 07. DC Jack



IMPORTANT NOTES BEFORE USE:

1. The Eva must always be used with the USB cable provided (as other USB cables are not compatible with this product). Insert only into a 5V/1A power source. You can also use the cable provided with a 5V/1A USB adaptor, which must be purchased separately.
2. The Eva Ultrasonic Diffuser is not suitable to be charged in a vehicle. Please note the Eva operates with a 3.7V lithium ion rechargeable battery, many vehicles operate at 12V, which will damage the diffuser.
3. When using as an aroma diffuser place on a flat surface, at least 60cm away from the floor and at least 10cm away from the wall. Do not place the Ultrasonic Diffuser on wooden or polished furniture that may be damaged by water moisture.
4. Always unplug the ultrasonic diffuser from the USB electrical supply when cleaning or filling with water. Always use the USB cable supplied. If the cable is damaged, it must be replaced with a suitable cable provided by the manufacturer or its agent.
5. Use a suitable measuring cup to fill the water into the water tank. Never attempt to fill water under a running tap or whilst plugged in. Do not fill the water beyond the max water level line. If overfilled, carefully remove the excess water from the tank.
6. The ultrasonic diffuser must be kept out of reach from children and pets to avoid risk of injury. Children should be supervised at all times to ensure they do not play with the appliance.

7. The ultrasonic diffuser is not intended for use by persons (including children) with reduced physical, sensory or mental capabilities or lack of experience and knowledge, unless they have been given supervision or instruction concerning use of the appliance by a person responsible for their safety.

8. Keep the ultrasonic diffuser in a clear space to allow the mist to freely spread and away from appliances especially those sensitive to water to avoid unnecessary accidents.

9. The ultrasonic diffuser must be cleaned after each use and should always be kept clean and dry when not in use. Never leave stagnant oil and water in the water tank for prolonged periods.

10. Never attempt to disassemble your ultrasonic diffuser or repair the product, as this will void your warranty and create a shock hazard. Contact your retailer if your ultrasonic diffuser develops a fault and an internal inspection is required.

11. In case of abnormal observations such as smoke, peculiar smells or noise, stop using the ultrasonic diffuser immediately and contact the retailer from where you purchased it. Never wrap the ultrasonic diffuser or adaptor with cloth or paper as blocking ventilation could increase the risk of fire.

12. Always handle the ultrasonic diffuser with care - accidental damage is not covered under the warranty.

13. Always use water at room temperature and use only fresh, clean water from a reliable source. Do not fill the water tank with other chemicals or liquids other than water and a few drops of fragrance or essential oils.

14. Never touch the water within the water tank when the diffuser is in operation as the water may become warm. It is perfectly normal for the water temperature to increase over time. Especially if it has been running for a few hours. This is caused by the energy created from the vibrating disc. The water should not exceed 40°C but for some models it can increase to 50°C (+/- 5°C). However, as the mist dissipates from the mist outlet, the water temperature cools rapidly due to the large surface area of each droplet, hence the mist is referred to as a 'cool mist'.

15. Always plug the cable into the DC jack before plugging into the USB power point.

16. Do not remove the lid during operation.

17. Do not touch, plug or unplug the aroma diffuser with wet hands.

18. Keep away from open flames, extended exposure may create a risk of explosion. Please store at room temperature.

19. Always check with your airline before travelling with the Eva on an aircraft.

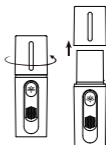
20. Do not immerse the unit in water or other liquids and do not attempt to clean in a dishwasher.

21. Do not operate without water. The ultrasonic diffuser is designed to enter standby mode when there is no water remaining in the water tank.

22. When using the product as an aroma diffuser we do not recommend that you mist essential oils directly onto your face, this should be used only to scent your surroundings.

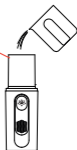
OPERATING INSTRUCTIONS

1. Twist the lid anti-clockwise (to the right) to remove

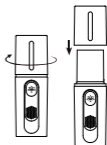


2. Add water to the water tank with a suitable measuring cup until the water reaches the max. water level line as shown.

DO NOT EXCEED THE MAX. WATER LEVEL

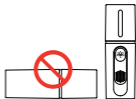


3. Replace the lid by twisting clockwise (to the left) to secure the lid in place.



Note: the lid must be securely locked into place to avoid any leakage

Note: Always use in an upright position, never place the diffuser down horizontally when in use or when the water tank contains liquid



If you wish to use the diffuser with aroma, add 1-2 drops of your favourite fragrance or essential oil into the water.

We do not recommend that you mist essential oils directly onto your face, this should be used only to scent your surroundings.



Note: After using as an aroma diffuser, please ensure that the water tank is thoroughly cleaned and completely free from essential oil or fragrance oil residue before using the mister on your face and body.



BUTTON FUNCTIONS

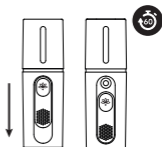
ON Position



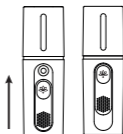
OFF Position



> Slide the front button down to activate the mist function, the light band will illuminate to indicate the mister is in use. The unit will mist continuously for 60 seconds.



> To turn off the mist, slide the button back to its first position.

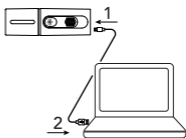


CHARGING

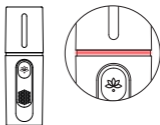
The light will flash to indicate that the unit needs to be charged.

Please ensure the tank is empty before charging.

> Plug the cable into the DC Jack before connecting the adaptor to the USB power point.



> Once connected properly a fixed red light will indicate that the unit is being charged.



FEATURES

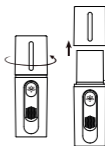
The Eva Mini Ultrasonic Diffuser uses state-of-the-art ultrasonic technology to separate water molecules creating a wonderfully refreshing, cooling mist for use on the face and body.

The Eva also brings a revolutionary way to scent your surroundings, high frequency vibrations break down fragrance and essential oils into minute particles which are then effectively diffused into the immediate surroundings.

- Mini humidifier
- Auto-shut off when water runs out for an additional safety
- Easy to clean and use
- LED light indicator for charging and in use
- Mists continuously for 60 seconds
- Use with floral waters for an extra wellness boost
- Use with essential oils to fragrance your surroundings
- Rechargeable, compact, on the go solution

MAINTENANCE

1. Twist the lid anti-clockwise (to the right) to remove



2. Use a clean swab or cloth to clean the unit.



Caution: If charging switch off the appliance and disconnect the power source from electrical outlet before cleaning.

Always keep your Eva clean and dry when not in use.

Never leave stagnant oil and water inside the tank for prolonged periods.

If using with essential or fragrance oils, if there is oil build up, use sanitary alcohol on a cotton bud if required.

When cleaning, always take extra care to ensure water does not enter DC Jack power port. Allow the unit to dry thoroughly if water accidentally enters the electrical port.

TROUBLESHOOTING

Problem	Possible Cause	Solution
No Mist or mist volume significantly reduced	The unit needs charging	Plug in USB cable to charge the unit
	Water is lower than the water level sensor	Refill the tank with ordinary tap water. Take care not to fill past the max water level line
	Mist outlet is blocked	Clean the mist outlet by thoroughly with a clean cloth or swab
Unit will not switch on	The unit needs charging (a flashing light indicates that the unit needs to be charged)	Plug in USB cable into a 5V/1A power source to charge the unit. A red light will indicate the unit is charging
Unit will not charge	The Power cable may not be connected properly	Disconnect the cable and try connecting properly. A red light will indicate that the unit is charging
Water is leaking from the product	The lid may not have been secured properly	Remove the lid and replace correctly. Ensure the lid is locked into position

The intensity and amount of mist may vary, but this is not unusual and should not be considered as a fault. Factors that may affect this include water type, humidity, temperature, air currents etc.

G - WARRANTY

This product carries a 12-month warranty for proper use in accordance with this manual against any manufacturing defects. Accidental damage is not covered under the warranty.

The warranty period is 12 months from the date of purchase. In case of any problems arising during the warranty period, please contact your retailer for maintenance or claims.

Proof of purchase will be required, so it is vital that you keep your receipt of purchase with this manual safely.

Corrosive oils such as Citronella may cause damage to the unit if left in the water tank. This type of damage is not covered under the warranty. This Aroma Diffuser must be cleaned after each use.



IMPORTANT!
MADE BY ZEN® Ultrasonic Aroma Diffusers comply with the WEEE Directive (Waste from Electrical and Electronic Equipment Directive) 2019/19/EU.

Electrical equipment is a large source of waste and if not properly recycled could have damaging effects on the environment, whereas if it is disposed correctly, the resources could be used again.

Electronic waste needs to be separated from other waste to be recycled properly. When the Eva Aroma Diffuser reaches the end of its working life, please deposit at an appropriate collection point for recycling of electrical products. You can also recycle used electronics at Household Waste Recycling Centres.

Caring for our planet is important to us, so please help us by disposing of the Eva correctly. Thank You.



MADE BY ZEN®

MADEBYZEN.COM