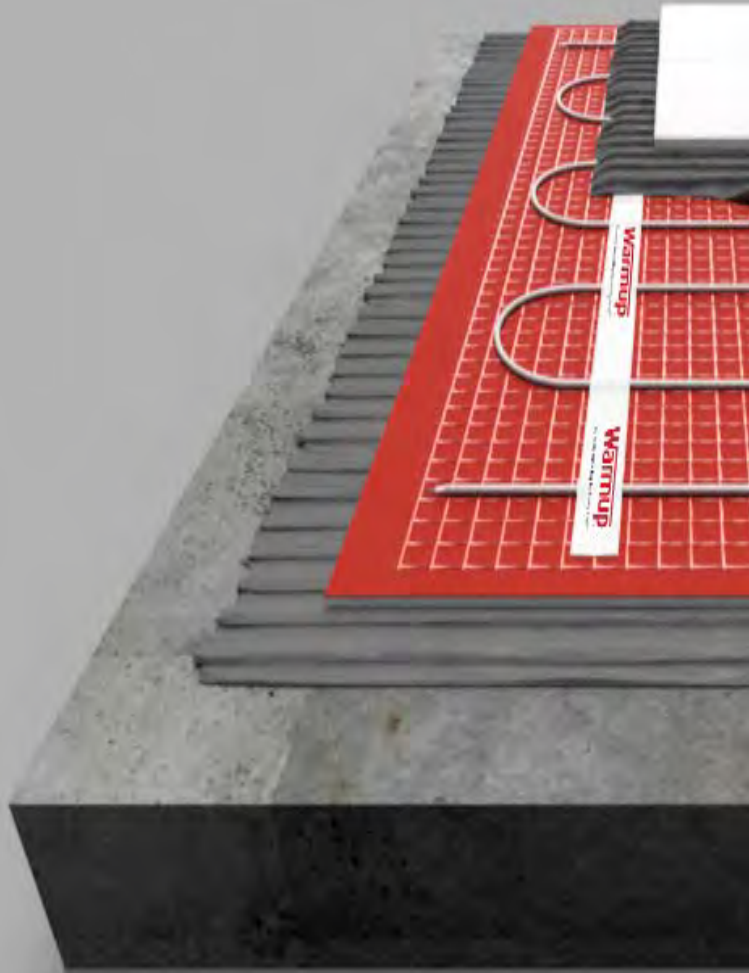


Warmup Ultralight

Installation Manual



WARMUP INC.
us@warmup.com
Tel.: 1-888-927-6333
www.warmup.com

CANADA:
ca@warmup.com
Tel.: 1-888-592-7687
www.warmup.ca

Warmup
The world's best-selling floor heating brand™

Installation

1



The subfloor must be clean and dry and if necessary, smoothed with a self-levelling compound to give an even surface.

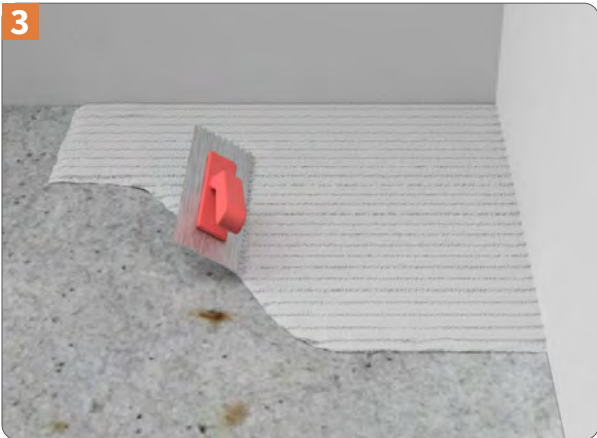
NOTE: Per ASTM C627 “The L/360 standard means that the floor should not deflect more than the “span” divided by 360. If the span of the joists is 10 feet (between supports), then the deflection should not be more than 1/3” between the center and the end.”

2



Prime subfloors with a solvent free primer as needed. For proprietary subfloors refer to the manufacturer instructions.

Provided the subfloor is adequately prepped and clean, it may not be necessary to prime. This can vary depending adhesive selection.

3

Ultralight should be installed using a flexible, cement-based adhesive. The adhesive should be trowelled out and combed through using a 6 mm x 6 mm (1/4" x 1/4") square notch trowel to give a ribbed bed, any slight depressions in the subfloor being filled by the mortar.

NOTE: If you plan to apply a levelling compound over Ultralight apply Warmup Perimeter Strip to the edge of the room to allow for differential movement between the finished floor level and walls.

4

Ultralight should be laid on the freshly applied ribbed bed and thoroughly bedded in to ensure that no voids are left beneath the boards and they are solidly supported. All boards should be laid with staggered joints.

NOTE: Allow the adhesive attaching the boards to the subfloor to cure before laying electric underfloor heating directly onto the boards.

Technical Specifications

Technical Specifications - Ultralight	
Product Code	WCI-1
Pack Size	Sold individually
Composition	Non-Woven Polypropylene Fleece Aluminium Extruded Polyethylene Foam Non-Woven Polypropylene Fleece
Thickness	1/4" (6 mm)
Dimensions	24" W (610 mm) x 48" L (1219 mm)
Area	8 sqft (0.75m ²)
Weight of Board	1.43lb (0.86kg)
Thermal Resistance	0.630 °F·ft ² ·h/BTU (0.111 m ² K/W)
Thermal Conductivity	0.031 BTU/°F·ft·h (0.054 W/mK)
Compressive Strength, 10% Compression	32 psi (220 kPa)
Point Loading, tiled	≥ 500 lbf (≥ 2.2 kN)
Robinsons test, 100 - 199 mm	Domestic
Robinsons test, 200 - 599 mm	Light Commercial
Robinsons test, ≥ 600 mm	Heavy Commercial
7 Day Shear Strength	113 psi (780 kPa)
Crack Resistance (Anti-Fracture / Decoupling)	≥ 1/8" => High Performance
Long Term Water Absorption	0.052% w/w
Water Vapour Permeability	9.12 mg/m ² h
Mould Growth	Does not support mould growth
Reaction to Fire	Euroclass E
Release of Dangerous Substances	SVHC ≤ 0.1% w/w

Warranty

Subject to the conditions and limitations stated below, Warmup Inc (“Warmup”) warrants that Warmup Ultralight (“the product”) will be free from manufacturing defects and will not deteriorate under normal usage for a period of 10 years from the date of purchase when installed and used in accordance with the product installation guide.



This warranty applies:

Only if registered with Warmup within 30 days of purchase. Registration can be completed online at www.warmup.com. In the event of a claim, proof of purchase is required in the form of an invoice or receipt. Such invoice or receipt must indicate the purchase date of the product associated with the claim.

This warranty is void if the floor covering over the product has been lifted, replaced, repaired, or covered with subsequent layers of flooring.

The warranty period begins on the date of purchase. During the period of the warranty Warmup will arrange for any sheet of the product, that has been proven to be defective, to be either replaced free of charge or issue a refund against the product only. These are the only remedies under this warranty, which does not affect your statutory rights. Such cost does not extend to any cost other than direct cost of replacement by Warmup and does not extend to costs of relaying, replacing, or repairing any floor covering or floor.

WARMUP PLC SHALL IN NO EVENT BE LIABLE FOR INCIDENTAL OR CONSEQUENTIAL DAMAGES, INCLUDING BUT NOT LIMITED TO EXTRA UTILITY EXPENSES OR DAMAGES TO PROPERTY.

WARMUP PLC is not responsible for:

1. Damage or repairs required because of faulty installation or improper application.
2. Damage because of floods, fires, winds, lightning, accidents, corrosive atmosphere or other conditions beyond the control of Warmup plc.
3. Use of components or accessories not compatible with the product.
4. Products installed outside of any country or territory within which Warmup operates.
5. Products not supplied or designated by Warmup.
6. Damage or repairs required because of any improper use.
7. Changes in the appearance of the product that does not affect its performance.

PRODUCT CODE

WCI-01

OVERVIEW

Ultralight™ is a specialized composite board designed for floor heating applications. Manufactured as flat, flexible, sheets they are water and mold resistant. The top surface incorporates a heat spreading aluminum layer combined with non-woven fleece.

The core of PEF insulation provides thermal separation from the floor beneath, ensuring a rapid thermal response of a heated layer of tiles or leveling compound above.

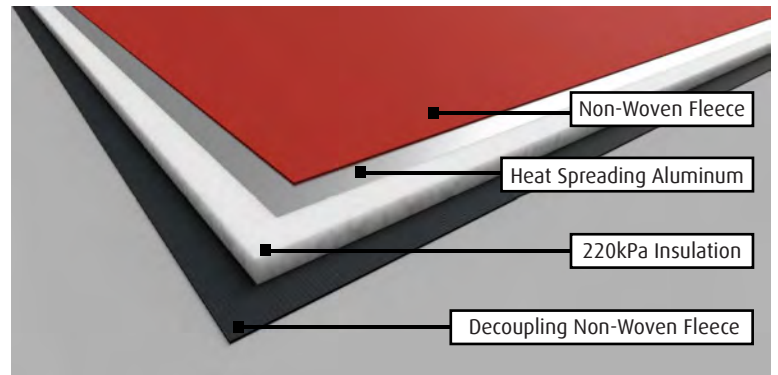
The rapid thermal response promoted by the PEF insulation and diffusion layer allows the flooring to heat up faster, resulting in a more energy-efficient and comfortable heated floor.

The base layer of non-woven fleece functions as a high-performance anti-fracture membrane for tile and stone floor coverings. It also facilitates a high-strength mechanical bond.

FEATURES & BENEFITS

**69% Energy Savings during Heat Up +
12% Energy Savings during the Heat Cycle =
Savings of \$1/sqft per Year in Electrical Costs**

- 3-in-1: Insulating, Heat Spreading, Decoupling
- The heat spreading aluminum layer **improves comfort and reduces running costs**. This enabled the floor to achieve the same comfort temperature with 12% less energy
- PEF insulation layer **reduces heat up times by 76 minutes** on slabs and reduces energy used during heat up by 69%
- Decoupling fleece layer provides high performance **protection against tiles cracking** due to lateral subfloor movement in accordance with ANSI A118.12 standard
- Ultralight weighs just over 1lbs per board making it much **lighter and easier to carry** than standard cement-based tile insulation and backer boards and it is more durable due to the high strength composite design meaning it **wont break if bent or dropped**
- Ultralight achieved **Heavy Commercial rating** when used with large format tiles (600 mm x 600 mm) and Light Commercial rating when used with standard tiles (300 mm x 300 mm), in accordance with ASTM-C627 (Robinson Test)
- The lightweight composite design makes it **easier to cut** curves and complex shapes, compared with cement-based tile insulation and backer boards and will not dull knife blades
- Ultralight will not crumble, dent, or create dust when cutting or kneeling on the boards which means **no dust to clean or breathe in during installation**



TECHNICAL DATA

Technical Specifications - Ultralight

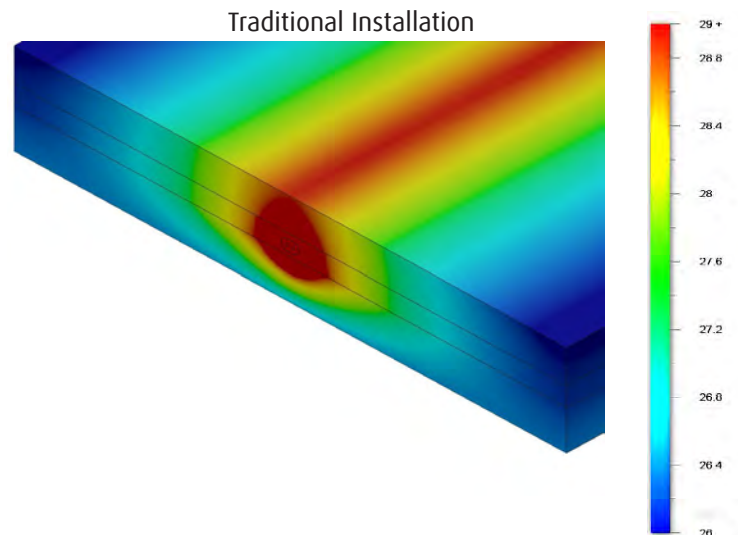
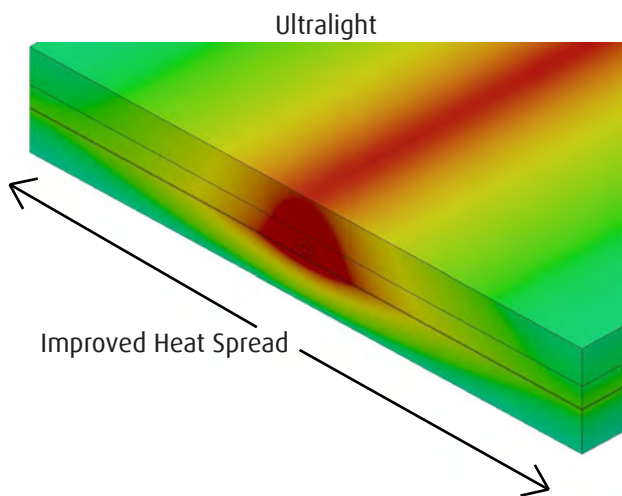
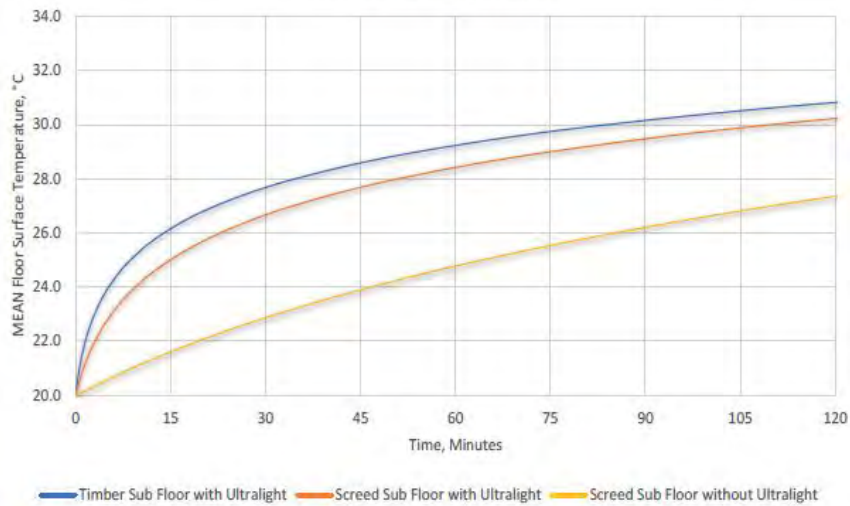
Product Code	WCI-01
Pack Size	1 board
Composition	Non-Woven Polypropylene Fleece Aluminium Extruded Polyethylene Foam Non-Woven Polypropylene Fleece
Thickness	1/4" / 6 mm
Dimensions	2' x 4' / 610 mm x 1219 mm
Area	8 sf / .75m ²
Weight of Board	1.43 lbs / 0.86 kg
Thermal Resistance	0.630°F · ft ² · h/BTU / 0.111 m ² /W
Thermal Conductivity	0.031 BTU/F · ft · h / 0.054 W/mK
Release of Dangerous Substances	SVHC ≤ 0.1% w/w
Compressive Strength, 10% Compression	32 psi / 220 kPa
Point Loading, tiled	≥ 500 lb/ft-lb / ≥ 2.2 kN
Robinson test, 100-199 mm tile	Domestic
Robinson test, 200-599 mm tile	Light Commercial
Robinson test, ≥ 600 mm tile	Heavy Commercial
7 Day Shear Strength	113 psi (780 kPa)
Crack Resistance (Anti-Fracture/Decoupling)	≥ 1/8" => High Performance
Long Term Water Absorption	0.052% w/w
Water Vapor Permeability	9.12 mg/m ² h
Mold Growth	Does not support mold growth
Reaction to Fire	Euroclass E
Warranty	10 year

HEAT SPREAD

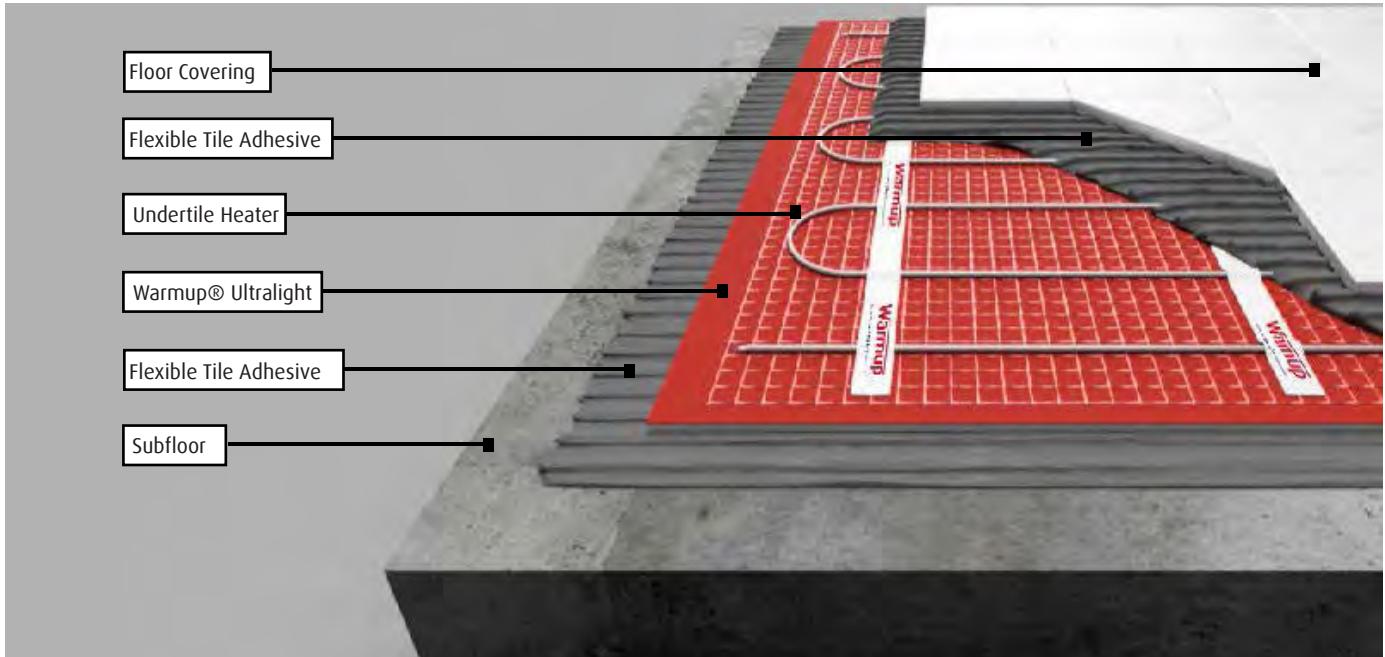
Accelerates lateral heat spread for more even heat in less time

Response Time Improvement - Ultralight

Tiles over eUFH @ 150W/m²



FLOOR BUILD UP



TECHNICAL SUPPORT

Warmup is available 24/7/365 at (888) 927-6333.

For quotes, layouts and specific technical information, contact us at:

Warmup USA

(888) 927-6333

us@warmup.com

Warmup CANADA

(888) 592-7687

ca@warmup.com

RELATED PRODUCTS

- Heating Mat - DWM - see WSC-0720
- DCM-PRO Cable - see WSC-0816
- DCM-PRO Peel-and-Stick Membrane - see WSC-1001