

# HVAC TOOLS



plumBOSS offer a range of specialist tools for the HVAC industry including the world-famous T-Drill branch forming tools, and exactCUT pipe cutting systems from Finland.



### STEEL FRAME STUD PUNCH

- Steel framing is commonly used internally on commercial builds.
- Will punch holes into the steel stud without the need for predrilling.
- An essential tool when installing tubing or cable through steel frame.
- Create two different size holes – 22.2mm and 34.1mm.
- Can punch up to 1mm thick steel.



Purchase Grommets (STP710GM) to go with your Stud Punch to protect tubing or cable from steel edges and prevent vibration and movement.

#### Stud Punch comes with:

- 22.2mm punch and die
- 34.1mm punch and die
- Heavy duty plastic moulded case

Customer Code	Code	Description
	EB-SP2234	plumBOSS Dual Size Stud Punch
	EB-RP22.2	Replacement Punch & Die for EB-SP2234 (22.2mm)
	EB-RP34.1	Replacement Punch & Die for EB-SP2234 (34.1mm)

### GROMMETS



- Grommets to suit Stud Punch (EB-SP2234).
- Flexible fingers self-centre tube or cable.
- Suits a range of tube or cable sizes.
- Protect tubing or cable from steel edges and prevent vibration and movement.

Customer Code	Code	Description
	STP710GM	Grommets to suit EB-SP2234 (100/pk)

TUBE BENDERS

### TWO PIECE TUBE BENDERS

- Leaver type two-piece benders.
- For soft or hard copper, aluminium, and chrome plated tubing.
- 90° and 45° bends made by bending to indicators on forming head.
- Strong alloy head is lightweight and durable.
- Easy to separate handles for quick loading and working in confined spaces.
- Nylon guide for extra smooth finish.



Customer Code	Code	Description
	BALTB12	plumBOSS Tube Bender 2 piece 1/2" (AU Size)
Special Order	BALTB34	plumBOSS Tube Bender 2 piece 3/4" (AU Size)

### QUAD BENDER

For bending soft or annealed tubing only, including copper, aluminium, brass, steel, and stainless steel up to 0.8mm wall tubing.

- Cover four tube sizes (3/16", 1/4", 5/16", 3/8") with one tool.
- Ergonomic, offset handles allow bends up to 180 degrees.



Customer Code	Code	Description
	RD02742	Quad Bender 3/16, 1/4, 5/16, 3/8"

DEBURRING TOOLS

### DEBURRING TOOL WITH POCKET CLIP

- For removing internal burrs on copper tubing.
- Features long-lasting high-speed blade, aluminium body, and pocket clip.
- For copper, aluminium, and brass tubing.



Customer Code	Code	Description
	DEB0	Deburring Tool w/- Pocket Clip

### CONE REAMER DEBURRING TOOL INNER/OUTER

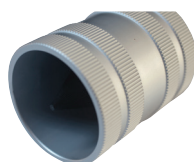
- For copper, aluminium, and brass tubing.
- Reams both inside and outside edges of tube with three hollow ground tool steel cutters.
- Comfortable hand fit.



Customer Code	Code	Description
	RECCR	Cone Reamer Inner/Outer 3/16-1 1/2" OD

### STAINLESS STEEL INNER/OUTER REAMER DEBURRING TOOL

For fast, clean inner and outer reaming/ deburring/bevelling of 3/8 inch – 2 inch copper, aluminium, brass and stainless steel tubing.



Customer Code	Code	Description
	SSR10-54	Stainless Steel Inner/Outer Reamer 10-54mm



**CORDLESS FLARING TOOL**

The Cordless Flaring Tool Kit.

Approximately 5 seconds to flare.

Compact, lightweight, and powerful. The eccentric cone moves forward and rotates to push and expand the copper tube. The forward movement of the cone is then stopped by the clutch, which activates at a predetermined pressure. The clamped position of the copper tube is fixed using a stopper, eliminating unevenness when flaring.

The flared surface of the copper tube is given a clean finish.

*Optional extras are clamps and liners to flare 5/8" and 3/4" inch.*

**Kit Includes:**

- Cordless flare and battery
- Carry case
- Allen key
- Battery charger
- Clamp with liner 1/4 inch (6.35mm)
- Clamp with liner 3/8 inch (9.52mm)
- Clamp with liner 1/2 inch (12.70mm)
- Instruction manual



Customer Code	Code	Description
	RX424936	Cordless Flaring Tool 1/4, 3/8, 1/2" Battery

**SPARES AND ACCESSORIES TO SUIT CORDLESS FLARING TOOL**

	424950	Clamp without Liner
	424850	Liner 1/4" (6.35 mm)
	424852	Liner 3/8" (9.52 mm)
	424853	Liner 1/2" (12.70 mm)
	424854	Liner 5/8" (15.88 mm)
	424855	Liner 3/4" (19.05 mm)

**QUICK FLARE**

Quick Flare is a fast economical way of flaring 1/2 and 3/4 inch copper tube. Tube is inserted into tool and clamped by squeezing handles together, flare pins are then hit with a hammer until desired flare is formed.



Customer Code	Code	Description
	P218	Quick Flare 1/2 and 3/4"

**45° ECCENTRIC FLARING TOOL**

45° Flaring Tool Eccentric Cone.

Produces smooth flares with little effort. The large feed screw handle easily turns the eccentrically mounted, bearing supported flaring head, giving the tube a uniform flare. A built in clutch mechanism stops flaring at the proper time, preventing damage to the tubing and giving a smooth, even flare.



- S458 for 1/4, 5/16, 3/8, 1/2, 5/8 and 3/4 inch.

Customer Code	Code	Description
	S458	Flaring Tool 1/4-3/4" 45 deg

**EXPANDER SET**

- Plier type expanders that expand 1/2", 3/4" and 1 inch tubing.
- Heads made of stainless steel, not plated mild steel.
- Additional heads sold separately.



**Kit includes:**

- Expander tool
- Cone Reamer
- PBEXPH.5 Expander Head Universal 1/2 inch
- PBEXPH.75 Expander Head Universal 3/4 inch
- PBEXPH1 Expander Head Universal 1 inch

Customer Code	Code	Description
	PBEXP	Copper Tube Expander Set 1/2, 3/4, 1"

**EXPANDER HEADS TO SUIT PBEXP**



Customer Code	Code	Description
	PBEXPH3-8	Expander Head Universal 3/8"
	PBEXPH.5	Expander Head Universal 1/2"
	PBEXPH5-8	Expander Head Universal 5/8"
	PBEXPH.75	Expander Head Universal 3/4"
	PBEXPH7-8	Expander Head Universal 7/8"
	PBEXPH1	Expander Head Universal 1"

**COLLET COPPER EXPANDERS**

- Collet expanders for medium to large copper tube/pipe expansion.
- Compact and easy to use.
- Simply insert in annealed tube and turn nut until desired socket size is formed.
- Multiple sizes on each collet expander.



Customer Code	Code	Description
	CE2	Collet Tube Expander (1.5x2") 40x50mm
	CE4	Collet Tube Expander (3x4") 80x100mm
	CE6	Collet Tube Expander (5x6") 125x150mm
	CE8	Collet Tube Expander (6x8") 150x200mm



**CHAIN PIPE AND TUBE CUTTER**

- Cuts mild steel, stainless steel, copper, PVC and aluminium pipe and tube.
- Requires very little clearance around the pipe/tube.
- Very small amount of swing required for one cutting wheel to go past the point of the last.
- 15 alloy steel cutting wheels evenly cut in low clearance situations.
- Locking handle and butterfly screw to easily apply cutting pressure.
- 20-114mm O/D x 5mm wall thickness capacity.



Customer Code	Code	Description
	186-12-589	Chain Pipe Cutter 114mm

**ROLLER BEARING TUBE CUTTERS**

- Tube cutter range for copper and stainless steel.
- High performance ball bearings are used in the rollers and the blade, reducing resistance and greatly improving cutting accuracy.
- The easiest turning, most precise manual tube cutters available.
- Industry leading tube cutters manufactured in Japan.



Customer Code	Code	Description
	RBCCU4-28	Roller Bearing Tube Cutter 4-28mm Copper
	RBCCU5-34	Roller Bearing Tube Cutter 5-34mm Copper
	RBCCU6-42	Roller Bearing Tube Cutter 6-42mm Copper
	RBCCU12-67	Roller Bearing Tube Cutter 12-67mm Copper
	RBCW28CU	Cutter Wheel to suit RBCU4-28 Copper
	RBCWCU	Cutter wheel to suit RBCCU8-34 – RBCCU12-67
	RBCSS4-28	Roller Bearing Tube Cutter 4-28mm S/Steel
	RBCSS5-34	Roller Bearing Tube Cutter 5-34mm S/Steel
	RBCSS6-42	Roller Bearing Tube Cutter 6-42mm S/Steel
	RBCSS12-67	Roller Bearing Tube Cutter 12-67mm S/Steel
	RBCW28SS	Cutter Wheel to suit RBCSS4-28 S/Steel
	RBCWSS	Cutter wheel to suit RBCSS8-34 – RBCSS12-68

**QUICK RELEASE TUBE/PIPE CUTTERS**

- Features include:
- Quick release, quick advance, and manual advance, along with the ball detent wheel pin.
  - Quick release knob on sliding bar allows fast tool placement or removal on/off pipe or tube.
  - Simple cutter wheel change allows use on a variety of pipe/tube material.



**TO SUIT COPPER, ALUMINIUM, BRASS, THIN WALL MILD STEEL**

Customer Code	Code	Description
	RD03420	Tube Cutter 1/4-2 5/8" (6-63mm) – TC2Q
	RD03430	Tube Cutter 3/8-3 1/2" (10-90mm) – TC3Q
	RD03440	Tube Cutter 1 1/8-4 1/2" (48-114mm) – TC4Q
	RD03460	Tube Cutter 4-6 5/8" (102-168mm) – TC6Q
	RD04158	Tube Cutter 6 1/4-10" (159-254mm) – TC8Q

**TO SUIT STAINLESS STEEL**

	RDTC2QSS	Tube Cutter 1/4-2 5/8" (6-63mm) Stainless Steel
	RDTC3QSS	Tube Cutter 3/8-3 1/2" (10-90mm) Stainless Steel
	RDTC4QSS	Tube Cutter 1 1/8-4 1/2" (48-114mm) Stainless Steel
	RDTC6QSS	Tube Cutter 4-6 5/8" (102-168mm) Stainless Steel
	RDTC8QSS	Tube Cutter 6 1/4-10" (159-254mm) Stainless Steel

**CUTTER WHEEL CHART FOR QUICK RELEASE CUTTERS**



CUSTOMER CODE	CODE	MATERIAL	CUTTING CAPACITY	SUITS
	RD03660	copper, aluminium, brass, steel	4.6mm	TC2Q
	RD03665	copper, aluminium, brass, steel	6.4mm	TC3, 4, 6, and 8Q
	RD03655	stainless steel	4.1mm	TC2Q
	RD03671	stainless steel	6.4mm	TC3, 4, 6, and 8Q



**PLUMBOSS EXACTCUT PIPE CUTTING SYSTEMS - VARIOUS MODELS FOR ALL PIPE MATERIALS**

Fast, safe, easy, accurate, portable pipe cutting systems. Cut copper, steel, stainless steel, cast/cement lined ductile iron, PE, and all plastic pipes. 15-1850mm + OD capacity across the range. Different blades to suit different materials. The weight of all exactCUT machines is either supported by the pipe or the pipe gripper mechanism, or a combination of both throughout the cutting process.

All exactCUT machines are relatively lightweight. The cutting process is very safe, they will not kick back and there is no exposure to the blade when cutting.

*A wide range of models to suit your requirements - Consult us to select the right machine and blades for you.*

**PLUMBOSS EXACTCUT 170E AND 220E**

Lightweight and easy to carry and operate on-site. You can cut steel, plastic, copper, cast/cement lined ductile iron, and stainless steel quickly and safely.

Customer Code	Code	Pipe Diameter	Wall in Steel	Wall in Plastic
	PEC170E	15-170mm	8mm	14mm
	PEC220E	15-220mm	8mm	14mm

**Both the exactCUT 170E and 220E pipe cutting systems include:**

- 1 x exactCUT Pipe Cutter 230V
- 4 x pipe rollers
- Carry Bag
- Operating instructions
- 1 x TCT 140 blade (fitted) suits PVC, copper and mild steel
- 2 x Allen Keys



The exactCUT PRO range features traffic light overload indicators to guide the operator and a laser beam line for marking out the cut.

All exactCUT PRO pipe cutting systems include:

- 1 x exactCUT Pipe Cutter 230V
- 1 x Pipe Roller Set (either 1 double & 2 singles, or 4 singles)
- 1 x Carry Bag
- Operating instructions
- TCT 165 blade (fitted) suits PVC, copper and mild steel
- 1 x Blade Spanner



Customer Code	Code	Pipe Diameter	Wall in Steel	Wall in Plastic
	PEC280PRO	40-280mm	20mm	45mm
	PEC360PRO	75-360mm	20mm	50mm
	PEC460PRO	100-460mm	20mm	50mm

**EXACTCUT MODELS IN THIS HVAC SECTION HAVE BEEN SELECTED TO SUIT THE INDUSTRY. FOR THE FULL RANGE GO TO THE EXACTCUT PIPE CUTTING SECTION OF OUR CATALOGUE, VISIT OUR WEBSITE, OR CALL US.**

World Class **PIPE CUTTERS**

exactCUT Pipe Cutting Systems



**CUT UP TO 10X FASTER**



**VERY SAFE & EASY TO USE**



**CUT ALL KINDS OF PIPE**

exactCUT pipe cutters are lightweight and easy to carry and operate on-site. Cut steel, plastic, copper, cast-iron, stainless steel and multi-layer pipes quickly & safely.

VISIT WEBSITE [exactcut.au](http://exactcut.au)





**ELECTRIC TUBE CLEANING MACHINES**

These electric tube cleaners are environmentally friendly, compact, and easily to manoeuvre, used to clean straight and curved tubes in heat exchangers, condensers, boilers, and other tubular apparatus. Water consumption can be regulated as needed. Easily interchange various shafts and accessories for maximum versatility.

They work by attaching a cleaning tool (to be determined on type of deposit to be cleaned) to a flexible shaft. The Electric Tube Cleaner provides rotary motion to the flexible shaft which rotates the cleaning tool inside the tube. If needed, water passes through the flexible shaft to aid in flushing out the deposits.

All Electric Tube Cleaners are supplied with forward direction foot switch. Dual direction foot switches are available on request.

Forward direction foot switch enables operator to concentrate on cleaning without worrying about cable feeding.

- PTC-40 for ¼-1 inch (6.4-25.4mm) tubes, ½ HP, 890 RPM, 28 kg.
- PTC-75 for 1 inch and up (25.5mm and up), 1 HP, 1780 RPM, 32 kg.
- Stainless steel body for corrosion resistance.
- Large wheels for easy transportation.
- Water consumption can be regulated as needed.

The PORTO is made compact for easy transportation.

- Used to clean ¼ inch – 1 inch I.D. (6.4-25.4mm) tubes in chillers, condensers, evaporators, and heat exchangers
- Easily connect and disconnect various shafts and cleaning tools.
- Foot Switch enables operator to concentrate on cleaning operation.
- Removes and flushes out deposits as the flexible shaft rotates at 1400 rpm and water feeds through the nylon casing to the cleaning tool. Water only flows when the machine is running. Water consumption can be regulated as required.
- Clean more tubes faster.



PM-PMTC-40



PM-PMTC-75

Customer Code	Code	Description
	PM-PTC-40	Electric Tube Cleaner PTC-40 220V
	PM-PTC-75	Electric Tube Cleaner PTC-75 220V

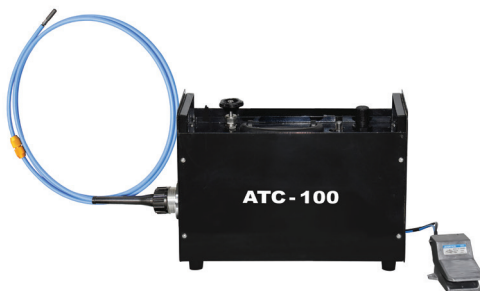


Customer Code	Code	Description
	PM-PORTO	Portable Electric Chiller Tube Cleaner ¼" to 1"

**PNEUMATIC TUBE CLEANING MACHINE**

**ATC-100 Portable Pneumatic Tube Cleaning Machine** is light weight and easy to operate. Includes air filter, regulator and lubricator, adjustable speed/torque control, and air foot pedal. Used to clean ¼ inch and up (6.4mm and up) tubes in chillers, condensers, evaporators, and heat exchangers. Shaft rotation can be set at optimum speed for each application. Pneumatic power for when using electrical equipment is hazardous. A foot pedal controls optimal shaft rotation speed and water flow. The water flushes out deposits as they are loosened, while the operator feeds the rotating shaft assembly through the tube.

**PM-ATC-100** for ¼ inch and up (6.4 and up), 1.7 HP, 3000 RPM max, 12kg.



Customer Code	Code	Description
	PM-ATC-100	Portable Pneumatic Cleaning Machine ¼" and up

**ATC-300 Extra Heavy-Duty Pneumatic Tube Cleaning Machine** includes air filter, regulator, lubricator, adjustable speed/torque control, tool storage box and air foot peddle. Used to clean ¼ inch and up (6.4mm and up) tubes in chillers, condensers, evaporators, and heat exchangers. Shaft rotation can be set at optimum speed for each application. Pneumatic power for when using electrical equipment is hazardous. A foot pedal controls optimal shaft rotation speed and water flow. The water flushes out deposits as they are loosened, while the operator feeds the rotating shaft assembly through the tube. Corrosion resistant stainless steel cover and chassis for long life. No tool required for quick connection of flexible shafts. Easy manoeuvrability with large wheels.

**PM-ATC-300** for ¼ inch and up (6.4 and up), 4 HP, 3000 RPM max, 29kg.



Customer Code	Code	Description
	PM-ATC-300	Pneumatic Cleaning Machine ¼" and up



### FLEXIBLE SHAFTS FOR TUBE CLEANERS

Flexible shafts with stainless-steel inner core.

When ordering flexible shafts and accessories, each one should be ordered for specific tube/pipe size or size range. Shafts have colour coded shaft stops for easy identification. Stainless-steel inner cores ensure long life, flexibility, and resistance to corrosion. Our stainless steel inner cores mean our shafts outlast the competition.



To order flexible shaft(s), determine tube I.D.(s) and length of longest tube.

### TUBE CLEANER LUBRICATOR TOOL AND LUBRICANT

Lubricator tool and lubricant used to lubricate flexible shafts for maximum useful life. Also used to lubricate shafts prior to storage. The lubricator tool is filled with a water-soluble lubricant that enters the shaft when air supply is provided. The residue lubricant washes out with water when the shaft is used again.

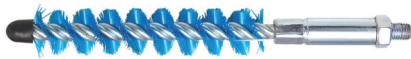


Customer Code	Code	Description
	PM-PFSL-1	Flexible Shaft Lubricator Tool
	PM-PLUBE	Shaft Lubricant 0.5L

### BRUSHES FOR TUBE CLEANERS

#### NYLON BRUSHES

Used to remove soft and light scale deposits in ferrous tubes (carbon steel and stainless steel) and in non-ferrous tube (copper, brass, plastic etc.) and for 'finishing' of tubes.



Customer Code	Code	Description
	PM-N-250	Nylon Brush 1/4" (6.4mm)
	PM-N-312	Nylon Brush 5/16" (7.9mm)
	PM-N-375	Nylon Brush 3/8" (9.5mm)
	PM-N-437	Nylon Brush 7/16" (11.1mm)
	PM-N-500	Nylon Brush 1/2" (12.7mm)
	PM-N-562	Nylon Brush 9/16" (14.3mm)
	PM-N-625	Nylon Brush 5/8" (15.9mm)
	PM-N-687	Nylon Brush 11/16" (17.5mm)
	PM-N-750	Nylon Brush 3/4" (19.1mm)
	PM-N-812	Nylon Brush 13/16" (20.6mm)
	PM-N-875	Nylon Brush 7/8" (22.2mm)
	PM-N-937	Nylon Brush 15/16" (23.8mm)
	PM-N-1000	Nylon Brush 1" (25.4mm)
	PM-N-1250	Nylon Brush 1 1/4" (31.7mm)
	PM-N-1500	Nylon Brush 1 1/2" (38.1mm)
	PM-N-1750	Nylon Brush 1 3/4" (44.4mm)
	PM-N-2000	Nylon Brush 2" (51mm)
	PM-N-2250	Nylon Brush 2 1/4" (57.1mm)
	PM-N-2500	Nylon Brush 2 1/2" (63.5mm)
	PM-N-2750	Nylon Brush 2 3/4" (70mm)
	PM-N-3000	Nylon Brush 3" (76.2mm)
	PM-N-3250	Nylon Brush 3 1/4" (82.6mm)
	PM-N-3500	Nylon Brush 3 1/2" (89mm)
	PM-N-3750	Nylon Brush 3 3/4" (95.2mm)
	PM-N-4000	Nylon Brush 4" (101.6mm)

### FLEXIBLE SHAFT REPAIR TOOL

For quick and safe attachment of couplings onto the shaft for maximum useful life of the shaft.



Customer Code	Code	Description
	PM-SHT-1	Shaft Repair Tool with Punch and Hammer

#### STAINLESS STEEL BRUSHES

Used to remove soft and light scale deposits in straight ferrous tubes (carbon steel and stainless steel).



Customer Code	Code	Description
	PM-SS-250	Stainless Steel Brush 1/4" (6.4mm)
	PM-SS-312	Stainless Steel Brush 5/16" (7.9mm)
	PM-SS-375	Stainless Steel Brush 3/8" (9.5mm)
	PM-SS-437	Stainless Steel Brush 7/16" (11.1mm)
	PM-SS-500	Stainless Steel Brush 1/2" (12.7mm)
	PM-SS-562	Stainless Steel Brush 9/16" (14.3mm)
	PM-SS-625	Stainless Steel Brush 5/8" (15.9mm)
	PM-SS-687	Stainless Steel Brush 11/16" (17.5mm)
	PM-SS-750	Stainless Steel Brush 3/4" (19.1mm)
	PM-SS-812	Stainless Steel Brush 13/16" (20.6mm)
	PM-SS-875	Stainless Steel Brush 7/8" (22.2mm)
	PM-SS-937	Stainless Steel Brush 15/16" (23.8mm)
	PM-SS-1000	Stainless Steel Brush 1" (25.4mm)
	PM-SS-1250	Stainless Steel Brush 1 1/4" (31.7mm)
	PM-SS-1500	Stainless Steel Brush 1 1/2" (38.1mm)
	PM-SS-1750	Stainless Steel Brush 1 3/4" (44.5mm)
	PM-SS-2000	Stainless Steel Brush 2" (51mm)
	PM-SS-2250	Stainless Steel Brush 2 1/4" (57.1mm)
	PM-SS-2500	Stainless Steel Brush 2 1/2" (63.5mm)
	PM-SS-2750	Stainless Steel Brush 2 3/4" (70mm)
	PM-SS-3000	Stainless Steel Brush 3" (76.2mm)
	PM-SS-3250	Stainless Steel Brush 3 1/4" (82.6mm)
	PM-SS-3500	Stainless Steel Brush 3 1/2" (89mm)
	PM-SS-3750	Stainless Steel Brush 3 3/4" (95.2mm)
	PM-SS-4000	Stainless Steel Brush 4" (101.6mm)



**BRASS BRUSHES**

Used to remove soft and light scale deposits in straight non-ferrous tubes (copper, brass, nickel, and alloy tube).



Customer Code	Code	Description
	PM-B-250	Brass Brush 1/4" (6.4mm)
	PM-B-312	Brass Brush 5/16" (7.9mm)
	PM-B-375	Brass Brush 3/8" (9.5mm)
	PM-B-437	Brass Brush 7/16" (11.1mm)
	PM-B-500	Brass Brush 1/2" (12.7mm)
	PM-B-562	Brass Brush 9/16" (14.3mm)
	PM-B-625	Brass Brush 5/8" (15.9mm)
	PM-B-687	Brass Brush 11/16" (17.5mm)
	PM-B-750	Brass Brush 3/4" (19.1mm)
	PM-B-812	Brass Brush 13/16" (20.6mm)
	PM-B-875	Brass Brush 7/8" (22.2mm)
	PM-B-937	Brass Brush 15/16" (23.8mm)
	PM-B-1000	Brass Brush 1" (25.4mm)
	PM-B-1250	Brass Brush 1 1/4" (31.7mm)
	PM-B-1500	Brass Brush 1 1/2" (38.1mm)
	PM-B-1750	Brass Brush 1 3/4" (44.5mm)
	PM-B-2000	Brass Brush 2" (51mm)
	PM-B-2250	Brass Brush 2 1/4" (57.1mm)
	PM-B-2500	Brass Brush 2 1/2" (63.5mm)
	PM-B-2750	Brass Brush 2 3/4" (70mm)
	PM-B-3000	Brass Brush 3" (76.2mm)
	PM-B-3250	Brass Brush 3 1/4" (82.6mm)
	PM-B-3500	Brass Brush 3 1/2" (89mm)
	PM-B-3750	Brass Brush 3 3/4" (95.2mm)
	PM-B-4000	Brass Brush 4" (101.6mm)

**TUBE CLEANER REPLACEMENT COUPLINGS**

Tool Coupling



Drive End Coupling



Customer Code	Code	Description
	PM-TC-250	Tool Coupling suits PFS-250 Flexible Shaft
	PM-TC-375	Tool Coupling suits PFS-375 Flexible Shaft
	PM-TC-500	Tool Coupling suits PFS-500 Flexible Shaft
	PM-TC-560	Tool Coupling suits PFS-560 Flexible Shaft
	PM-TC-750	Tool Coupling suits PFS-875 Flexible Shaft
	PM-DC-250	Drive end coupling suits PFS-250 Flexible Shaft
	PM-DC-375	Drive end coupling suits PFS-375 Flexible Shaft
	PM-DC-500	Drive end coupling suits PFS-500 Flexible Shaft
	PM-DC-560	Drive end coupling suits PFS-560 Flexible Shaft
	PM-DC-750	Drive end coupling suits PFS-875 Flexible Shaft

**SOLDERING AND BRAZING**

**MAXXGASS (MAPP GAS) 400G CYLINDER**

- Ideal for medium to heavy soldering and brazing.
- Burns longer and hotter and solders faster than propane.
- Made in Italy.



Customer Code	Code	Description
	MG2	plumBOSS maxxGASS 400g Cylinder

**MAPP TORCH AND GAS KIT**

Kit includes:

- 1 x EXTREME787 Self-Lighting Torch
- 1 x plumBOSS maxxGASS Cylinder



Customer Code	Code	Description
	787MGKIT	EXTREME787 Torch & maxxGASS Kit

**SELF-LIGHTING MAPP GAS TORCH**

- Extreme Silver Swirl flame.
- Ideal for medium to heavy soldering and brazing.
- Trigger button instant start.
- Trade level, high quality torch.



Customer Code	Code	Description
	EXTREME787	Self-Lighting Torch





**MANUAL BRANCH FORMING FOR COPPER TUBE**

Hand operated branch forming kits and individual tool components for copper tube. Eliminates up to 90% of T-fitting purchases. One brazed joint replaces 3 soldered joints. No need for tube cutting. 66% fewer joints. Less chance for leaks or call backs.

**BRANCH FORMING TOOL KIT NO.1 1/2-1 INCH**



**KKBO1 Kit Includes:**

- 1 x 1/2 inch Branch Former
- 1 x 3/4 inch Branch Former
- 1 x 1 inch Branch Former
- 1 x Adjustable Drill 3/8-2 1/8 inch
- 1 x Ratchet Wrench
- 1 x Marking Pliers
- 1 x File & Handle
- 1 x Plastic Toolbox

**BRANCH FORMING TOOL KIT NO.2 1/2-2 INCH**



**KKBO2 Kit Includes:**

- 1 x 1/2 inch Branch Former
- 1 x 3/4 inch Branch Former
- 1 x 1 inch Branch Former
- 1 x 1 1/4 inch Branch Former
- 1 x 1 1/2 inch Branch Former
- 1 x 2 inch Branch Former
- 1 x Adjustable Drill 3/8-2 1/8 inch
- 1 x Ratchet Wrench
- 1 x Marking Pliers
- 1 x File & Handle
- 1 x Plastic Toolbox

Customer Code	Code	Description	Size
	KKB01	Branch Forming Tool Kit No.1	1/2-1"

Customer Code	Code	Description	Size
	KKB02	Branch Forming Tool Kit No.2	1/2-2"

**BRANCH FORMING TOOLS INDIVIDUALLY**



Customer Code	Code	Description
	KKAD	Adjustable Drill Tool 3/8-2 1/8"
	KKADP	Adjustable Drill Point Only 3/8-2 1/8"
	KKMP	Marking Pliers Dimpler
	KKRW	Ratchet Wrench
	KKFH	File and Handle 8"

**BRANCH FORMERS INDIVIDUALLY**



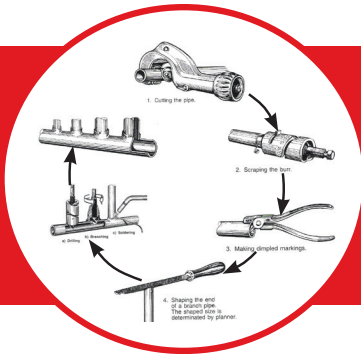
Customer Code	Code	Description
	KKBF06	Branch Forming Tool 1/4"
	KKBF10	Branch Forming Tool 3/8"
	KKBF15	Branch Forming Tool 1/2"
	KKBF16	Branch Forming Tool 5/8"
	KKBF20	Branch Forming Tool 3/4"
	KKBF22	Branch Forming Tool 7/8"
	KKBF25	Branch Forming Tool 1"
	KKBF29	Branch Forming Tool 1 1/8"
	KKBF32	Branch Forming Tool 1 1/4"
	KKBF35	Branch Forming Tool 1 3/8"

Customer Code	Code	Description
	KKBF40	Branch Forming Tool 1 1/2"
	KKBF41	Branch Forming Tool 1 5/8"
	KKBF50	Branch Forming Tool 2"
	KKBF54	Branch Forming Tool 2 1/8"
	KKBF65	Branch Forming Tool 2 1/2"
	KKBF67	Branch Forming Tool 2 5/8"
	KKBF75	Branch Forming Tool 3" (Required Hole Size 42x50)
	KKBF100	Branch Forming Tool 4" (Required Hole Size 60x80)



INNOVATIVE TRADE TOOLS

The common method of manual branch forming is still widely used. plumBOSS sell over 80 Branch forming kits per year.



If you're spending too much time manually pulling branches, you need to look at a faster method!

# THIS IS IT!

Witness the incomparable power and speed of the T-Drill

T-Drill Branchforming Kit

T-65 Copper Branchforming Power Unit



**Pull branches in seconds.  
Count the savings after just one commercial job.**



## T-DRILL COPPER BRANCH FORMING

Extremely fast and safe forming of copper branches off copper run tubes. Forming a 50mm branch will only take 60 seconds or less. Achieve better flow characteristics. Reduce cutting, welding (only one brazed joint), fitting costs, inspection costs, and risk of call backs due to leaks – your competitiveness and job profit will increase. Cut costs, save time, improve quality, increase profit. If a comparison is made between the installed cost of a tee fittings and T-DRILL joints, you will see an improved profit that approaches 70%. This can be shown clearly using a labour calculator.

### T-DRILL POWER/BATTERY UNITS FOR COPPER

The heavy-duty **T-DRILL T-65** for copper tubes is the best solution for pulling branches up to 54mm off run tubes up to 108mm (with optional retrofit kit for up to 163.8mm run tubes).

Available in corded or battery versions. Power/battery unit and collaring heads can be purchased individually, however, if you're doing different size branches often then better value is found in purchasing a T-Drill kit.



T-65 Power Unit



T-65B Cordless Battery Unit

Customer Code	Code	Description
	TD5330681	T-65 Copper Branch Forming Power Unit
	TD5330694	T-65B Copper Branch Forming Cordless Battery Unit

The **T-DRILL T-35** is a smaller unit than the T-65.

The T-35 for copper tubes is suitable for pulling branches up to 35mm off run tubes up to 76mm.



Customer Code	Code	Description
	TD5330646	T-35 Branch Forming Power Unit

### T-DRILL T-35 BRANCH FORMING KIT 1/2-1 INCH

**Kit includes:**

- TD35 Power Unit
- Detachable Power Cord
- 1/2 inch Collaring Head
- 3/4 inch Collaring Head
- 1 inch Collaring Head
- Lubricant Applicator
- Hex Key
- Marking Pliers (KKMP)

(This kit can be supplied with NZ copper size collaring heads. Heads are also adjustable.)



Kit does not include the tube notcher

Customer Code	Code	Description
	BFK35CU	T-Drill Branch Forming Kit 1/2-1"

### T-DRILL T-65B BATTERY BRANCH FORMING KIT 1/2-2 INCH

**Kit includes:**

- T-65 Battery Unit
- Battery
- 1/2 inch Collaring Head
- 3/4 inch Collaring Head
- 1 inch Collaring Head
- 1 1/4 inch Collaring Head
- 1 1/2 inch Collaring Head
- 2 inch Collaring Head
- Lubricant Applicator
- 2 x Hex Keys
- Marking Pliers (KKMP)

(This kit can be supplied with NZ copper size collaring heads. Heads are also adjustable.)



Kit does not include the tube notcher

Customer Code	Code	Description
	BFK65CU-BATT	T-Drill Battery Branch Forming Kit 1/2-2"

### T-DRILL T-65 BRANCH FORMING KIT 1/2-2 INCH

**Kit includes:**

- T-65 Power Unit
- Detachable Power Cord
- 1/2 inch Collaring Head
- 3/4 inch Collaring Head
- 1 inch Collaring Head
- 1 1/4 inch Collaring Head
- 1 1/2 inch Collaring Head
- 2 inch Collaring Head
- Lubricant Applicator
- 2 x Hex Keys
- Marking Pliers (KKMP)

(This kit can be supplied with NZ copper size collaring heads. Heads are also adjustable.)



Kit does not include the tube notcher

Customer Code	Code	Description
	BFK65CU	T-Drill Branch Forming Kit 1/2-2"

### T-DRILL COPPER TUBE END NOTCHER

The Tube End Notcher is used for cutting and dimpling the branch tube ends to enable the best possible flow characteristics.

It cuts a half-moon shaped coupon from each side of the branch tube to allow full unrestricted flow and simultaneously presses in a dimple that rests on the rim of the tee acting as a depth stop. A second dimple 6mm higher acts as a point of inspection. The result is an inspectable brazed joint with the best possible flow characteristics.

For branch tube sizes up to 54mm.



Customer Code	Code	Description
	ND-54	T-Drill Tube End Notcher ND-54



### T-DRILL COLLARING HEADS FOR COPPER



Customer Code	Code	Description
	TD5310408	T-Drill Copper Collaring Head 8mm (5/16")
	TD5310399	T-Drill Copper Collaring Head 10 mm (3/8")
	TD5310400	T-Drill Copper Collaring Head 12mm (1/2")
	TD5310401	T-Drill Copper Collaring Head 15 mm (5/8")
	TD5310464	T-Drill Copper Collaring Head 19mm (3/4")
	TD5310403	T-Drill Copper Collaring Head 22 mm (7/8")
	TD5310404	T-Drill Copper Collaring Head 28mm (1 1/8")
	TD5310405	T-Drill Copper Collaring Head 25mm (1")
	TD5310414	T-Drill Copper Collaring Head 32mm (1 1/4")
	TD5310411	T-Drill Copper Collaring Head 35 mm (1 3/8")
	TD5310412	T-Drill T-65 Copper Collaring Head 42mm (1 1/2")
	TD5310413	T-Drill T-65 Copper Collaring Head 54mm (2-2 1/8")

### T-DRILL PILOT DRILLS TO SUIT STAINLESS STEEL



Customer Code	Code	Description
	TD6310558	Pilot Hole Drill Bit 17-19mm OD SS 9.9
	TD6310552	Pilot Hole Drill Bit 20-25mm OD SS 11.3
	TD6310553	Pilot Hole Drill Bit 25-30mm OD SS 12.5
	TD6310554	Pilot Hole Drill Bit 30-44mm OD SS 15.8
	TD6310555	Pilot Hole Drill Bit 45-51mm OD SS 17.3
	TD6310722	Pilot Hole Drill Bit 48-54mm OD SS 19.0

### T-DRILL STAINLESS STEEL BRANCH FORMING

The powerful T-DRILL T-65 SS for stainless steel is the best solution for pulling branches of 20-50mm in main run tubes up to 114mm (with optional clamping system for up to 300mm run tubes). Achieve better flow characteristics. Job profit will increase due to reduced cutting, welded joints, fitting costs, inspection costs and tube polishing at welding points. Extremely fast, form a 50mm branch in a few minutes.



Collaring heads and pilot drills purchased separately as per requirements.

Customer Code	Code	Description
	TD5330808	T-65 SS Machine for Collars OD 17-54mm

### T-DRILL COLLARING HEADS FOR STAINLESS STEEL



Customer Code	Code	Description
	TD5050111	T-Drill S/Steel Collaring Head 21.3 (20-25mm)
	TD5050116	T-Drill S/Steel Collaring Head 26.9 (25-30mm)
	TD5050121	T-Drill S/Steel Collaring Head 33.7 (30-34mm)
	TD5050126	T-Drill S/Steel Collaring Head 42.4 (34-44mm)
	TD5050129	T-Drill S/Steel Collaring Head 48.3 (45-51mm)
	TD5310413	T-Drill T-65 Copper Collaring Head 54mm (2-2 1/8")

PIPE STANDS

### STANDARD HEIGHT PIPE STANDS

- plumBOSS standard height pipe stands have a 907kg weight capacity and 730-1250mm working height range.
- The adjustable screw allows precise adjustment to the perfect working height.
- Hardened steel locking ring for quick setting of approximate height.
- Powder coated and zinc plated construction for corrosion resistance.

**V Head pipe stand** for common applications including pipe threading and grooving.

Customer Code	Code	Description
	PS-FLD-V	Pipe Stand Folding Leg V Head



**Roller Head** for fast and easy rotation of pipe (not necessary for pipe threading and grooving).

Customer Code	Code	Description
	PS-FLD-R	Pipe Stand Folding Leg Roller Head



### ROLLER BALL TRANSFER HEAD ATTACHMENTS TO SUIT V HEAD PIPE STAND

- Will attach to the V-Head pipe stand.
- Allows you to rotate, slide, and feed pipe easily.
- Sold in pairs.



Customer Code	Code	Description
	PS-BTHA	Ball Transfer Head Attachment (Pair)

### SHORT PIPE STANDS

- plumBOSS short pipe stands have a 907kg weight capacity and 470-925mm working height range.
- The adjustable screw allows precise adjustment to the perfect working height.
- Hardened steel locking ring for quick setting of approximate height.
- Powder coated and zinc plated construction for corrosion resistance.

**V Head pipe stand** for common applications including pipe threading and grooving.

Customer Code	Code	Description
	PS-SFLD-V	plumBOSS Pipe Stand Short Folding Leg V Head



**Roller Head** for fast and easy rotation of pipe (not necessary for pipe threading and grooving).

Customer Code	Code	Description
	PS-SFLD-R	plumBOSS Pipe Stand Short Folding Leg Roller Head



### TRI-STAND WITH CHAIN VISE 6 INCH

Able to work on irregular shapes. A chain vise and stand all in one. Built-in chain vise, pipe bending slots, pipe rest, ceiling brace screw and hardened jaws. Safe and reliable with outstanding durability and functionality. Bending slots for copper and thin-wall steel pipes up to 3/4 inch.



Die cast body and steel construction.

Customer Code	Code	Description
	RX120CVB	Tri-stand Chain Vise 6" CVX6