



PIPE TOOLS & VISES
SINCE 1896

HERRAMENTAS PARA TUBOS Y PRENSAS
DESDE 1896

ROHRWERKZEUGE & SCHRAUBSTÖCKE
SEIT 1896

OUTILLAGE POUR TUBES ET ÉTAUX
DEPUIS 1896



Operating Instructions

Hinged Cutter

For cutting steel, ductile iron and cast iron pipe

Cortatubo Abisagrado

Para cortar tubos de acero, hierro dúctil y hierro fundido

Bedienungsanleitung Gelenkschneider

Zum Schneiden von Stahl, Sphäroguss und Gusseisenrohre

Lame à charnières

Pour découper l'acier et les tuyaux en fonte et fonte ductile

REED MANUFACTURING COMPANY

1425 WEST 8TH ST. ERIE, PA 16502 USA

PHONE: 800-666-3691 OR 814-452-3691 FAX: 800-456-1697 OR 814-455-1697

www.reedmfgco.com

1002 - #50071

Table 1

HINGED CUTTER CHART

Catalog No.	Item Code	Pipe Capacity		Length		Weight	
		Inches Nom.	Actual Ø mm	in	mm	lbs	kg
H2 1/2S*	03110	1 - 2 1/2	32 - 76	17	419	7.2	3.3
H2 1/2I*	03112	1 - 2 1/2	32 - 76	17	419	7.2	3.3
H2 1/2X*	03114	1 - 2 1/2	32 - 76	17	419	7.2	3.3
H4S	03120	2 - 4	60 - 125	22	559	12.8	5.8
H4I	03122	2 - 4	60 - 125	22	559	12.8	5.8
H4X	03124	2 - 4	60 - 125	22	559	12.8	5.8
H6S	03130	4 - 6	114 - 182	28	711	19.4	8.8
H6I	03132	4 - 6	114 - 182	28	711	19.4	8.8
H6S	03134	4 - 6	114 - 182	28	711	19.4	8.8
H8S	03140	6 - 8	168 - 240	32	813	24.4	11.1
H8I	03142	6 - 8	168 - 240	32	813	24.4	11.1
H8K	03144	6 - 8	168 - 240	32	813	24.4	11.1
H8XX	03146	6 - 8	168 - 240	32	813	24.4	11.1
H12S	03150	8 - 12	219 - 356	34	864	34.9	15.9
H12I	03152	8 - 12	219 - 356	34	864	34.9	15.9
H12X	03154	8 - 12	219 - 356	34	864	34.9	15.9
H12XX	03156	8 - 12	219 - 356	34	864	34.9	15.9

* *EXCLUSIVE*

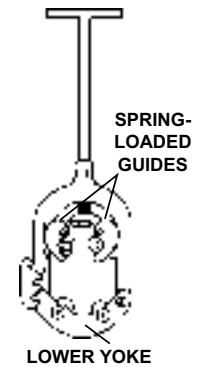
Table 2

CUTTER WHEEL REFERENCE CHART

Cutter Wheel				
Item Code	Catalog No.	Quantity	Hinged Cutter	Application
03502	HS2 1/2	4	H2 1/2	Steel; Stainless Steel
03510	HX2 1/2	4	H2 1/2	Steel; Stainless Steel; Schedule 80
03624	2RBCI	4	H2 1/2	Cast Iron; Ductile Iron
03504	HS4	4	H4	Steel; Stainless Steel
03505	HSI4	4	H4	Steel; Stainless Steel; Cast Iron; Ductile Iron
03512	HX4	4	H4	Steel; Stainless Steel; Schedule 80
03522	HI4	4	H4	Cast Iron; Ductile Iron
03506	HS6	4	H6	Steel; Stainless Steel
03514	HX6	4	H6	Steel; Stainless Steel; Schedule 80
03507	HSI6-8	4	H6; H8	Steel; Stainless Steel; Cast Iron; Ductile Iron
03524	HI6	4	H6; H8; H12	Cast Iron; Ductile Iron
03525	H6PSE5	4	H6; H8; H12	Steel; Cast Iron; Ductile Iron
03508	HS8-12	4	H8; H12	Steel; Stainless Steel
03516	HX8	4	H8; H12	Steel; Stainless Steel; Schedule 80
03518	HXX8	4	H8; H12	Steel; Stainless Steel; Schedule 100

Operating Instructions

1. Choose the cutter wheel for the right pipe application: steel, cast iron, etc. (Table 2)
2. Turn handle to open cutter enough to accommodate the size of pipe to be cut.
3. Place cutter around pipe with spring-loaded guides on top. Connect lower yoke by pushing upward to locked position. Turn the cutter handle until the wheels are uniformly touching the pipe.
4. Begin to cut the pipe by moving the entire cutter in a back and forth motion that constitutes a 90 - 110 degree swing.
5. Check to make sure that the wheels are tracking uniformly. If so, tighten the handle one-half turn each time that you bring the cutter handle back toward yourself.



WARNING: DO NOT STOP FOR ANY SIGNIFICANT AMOUNT OF TIME IN THE MIDDLE OF A CUT! THE CUTTING ACTION GENERATES HEAT ON THE PIPE. UPON COOLING, THE WHEELS MAY BECOME WEDGED IN THE TRACK. THIS IS ESPECIALLY TRUE FOR DUCTILE IRON PIPE.

6. Complete the cut by maintaining pressure on the cutter wheels as you continue to swing the cutter in a back and forth motion.

USE LUBRICATING OIL: It will take less effort and prolong the life of the cutter wheels and pins. DO NOT use cutting oil.

BADLY CRUSTED AND RUST SCALED PIPE: Use a Reed Descaler (Table 3) to remove the rust and scale from the area to be cut. A hammer and chisel or coarse file may also be used. Descaling will help save cutter wheels and cutting time; and will help square the cutter on the pipe to insure tracking.

Table 3
PIPE DESCALERS

Cat. No.	Item Code	Pipe Cap.	Style	Length		
DS12	08000	3 - 12 in	Steel	70 - 300 mm	32 in	810 mm
DS36	08006	3 - 36 in	Steel	70 - 910 mm	44 in	1110 mm
DS12B	08008	3 - 12 in	Belt	70 - 300 mm	45 in	1143 mm
DS36B	08010	12 - 36 in	Belt	300 - 910 mm	72 in	1829 mm

HELPFUL HINTS FOR DUCTILE IRON PIPE: Maintain maximum pressure on the cutter wheels. Continue feeding in with each revolution or cycle as ductile iron pipe tends to work harden and will become extremely difficult to penetrate. Once pipe is fractured, continue feeding to insure cut has in fact been completed all the way around the pipe.

NOTE:

- No cutter wheels available for cutting soil pipe.
- For cutting larger diameter pipe (up to 36") try Reed Rotary™ Cutters.
- For cutting cast iron and ductile iron up to 48" with air or hydraulic power, try Reed Universal Pipe Cutters.

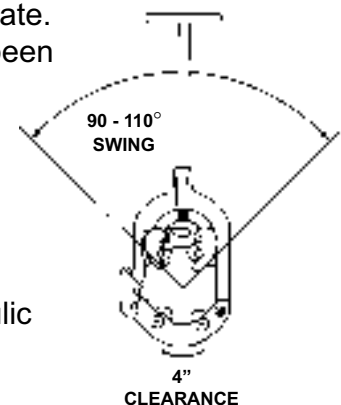


Figura 1

CORTATUBOS ABISAGRADOS

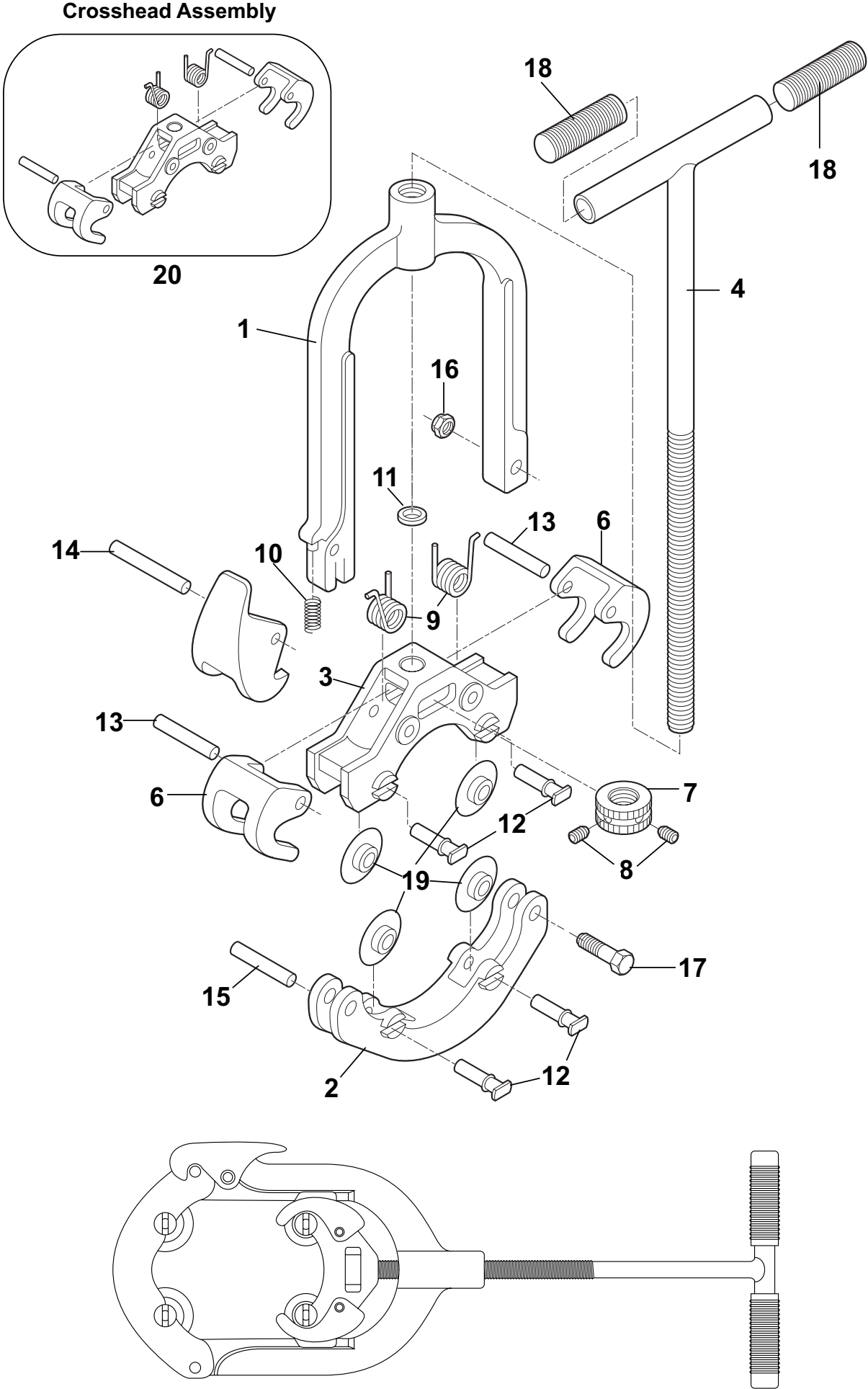
No de Catálogo	Código del Art.	Capacidad		Largo		Peso	
		Pulg. Nom.	Ø mm	Pulg.	mm	lbs	kg
H2 1/2S*	03110	1 - 2 1/2	32 - 76	17	419	7.2	3.3
H2 1/2I*	03112	1 - 2 1/2	32 - 76	17	419	7.2	3.3
H2 1/2X*	03114	1 - 2 1/2	32 - 76	17	419	7.2	3.3
H4S	03120	2 - 4	60 - 125	22	559	12.8	5.8
H4I	03122	2 - 4	60 - 125	22	559	12.8	5.8
H4X	03124	2 - 4	60 - 125	22	559	12.8	5.8
H6S	03130	4 - 6	114 - 182	28	711	19.4	8.8
H6I	03132	4 - 6	114 - 182	28	711	19.4	8.8
H6S	03134	4 - 6	114 - 182	28	711	19.4	8.8
H8S	03140	6 - 8	168 - 240	32	813	24.4	11.1
H8I	03142	6 - 8	168 - 240	32	813	24.4	11.1
H8K	03144	6 - 8	168 - 240	32	813	24.4	11.1
H8XX	03146	6 - 8	168 - 240	32	813	24.4	11.1
H12S	03150	8 - 12	219 - 356	34	864	34.9	15.9
H12I	03152	8 - 12	219 - 356	34	864	34.9	15.9
H12X	03154	8 - 12	219 - 356	34	864	34.9	15.9
H12XX	03156	8 - 12	219 - 356	34	864	34.9	15.9

* *EXCLUSIVO*

Figura 2

CUCHILLAS

Cuchilla				
Código del Art.	No. de Cat.	Paquete Estándar	Cortatubo abisagrado	Uso
03502	HS2 1/2	4	H2 1/2	Acero; Acero inoxidable
03510	HX2 1/2	4	H2 1/2	Acero; Acero inoxidable; cédula 80
03624	2RBCI	4	H2 1/2	Hierro fundido; Hierro dúctil
03504	HS4	4	H4	Acero; Acero inoxidable
03505	HSI4	4	H4	Acero; Acero inoxidable; Hierro fundido; Hierro dúctil
03512	HX4	4	H4	Acero; Acero inoxidable; cédula 80
03522	HI4	4	H4	Hierro fundido; Hierro dúctil
03506	HS6	4	H6	Acero; Acero inoxidable
03514	HX6	4	H6	Acero; Acero inoxidable; cédula 80
03507	HSI6-8	4	H6; H8	Acero; Acero inoxidable; Hierro fundido; Hierro dúctil
03524	HI6	4	H6; H8; H12	Hierro fundido; Hierro dúctil
03525	H6PSE5	4	H6; H8; H12	Acero; Hierro fundido; Hierro dúctil
03508	HS8-12	4	H8; H12	Acero; Acero inoxidable
03516	HX8	4	H8; H12	Acero; Acero inoxidable; cédula 80
03518	HXX8	4	H8; H12	Acero; Acero inoxidable; cédula 100



Parts List

Ref.		H2-1/2	H4	H6	H8	H12		
No.	Description	Item Code	Item Code	Item Code	Item Code	Item Code	Qty	
1	Upper Yoke	93150	93151	93152	93153	93154	1	
2	Lower Yoke	93120	93121	93122	93123	93124	1	
3	Crosshead	93135	93136	93137	93138	93139	1	
4	Handle & Screw	93125	93126	93127	93128	93128	1	
5	Latch	93115	93116	93117	93117	93117	1	
6	Guide	93043	93046	93049	93049	93049	2	
7	Crosshead Locknut	93140	93141	93142	93143	93143	1	
8	Set Screws	40083	40090	40090	40090	40090	2	
9	Guide Spring	40341	40035	40036	40036	40036	2	
10	Latch Spring	40046	40030	40030	40030	40030	1	
11	Thrust Washer	93044	93010	93052	93052	93052	1	
12	Wheel Pin	93310	93310	93112	93112	93112	4	
13	Guide Pin	30030	30030	30013	30013	30013	2	
14	Latch Pin	93019	93018	93018	93018	93018	1	
15	Lower Yoke Pin	93181	93008	93008	93008	93008	1	
16	Locknut	30179	30143	30143	30143	30143	1	
17	Hinge Bolt	93155	93146	93156	93156	93156	1	
18	Handle Grips	Not Used	40196	40197	40197	40197	2	
19	Cutter Wheel	See Cutter Wheel Reference Chart: Table 2						
20	Crosshead Assembly	93130	93131	93132	93133	93134	1	

Ersatzteilliste

Bez.		H2-1/2	H4	H6	H8	H12		
Nr.	Beschreibung	Art-Code	Art-Code	Art-Code	Art-Code	Art-Code	Menge	
1	Oberer Bügel	93150	93151	93152	93153	93154	1	
2	Unterer Bügel	93120	93121	93122	93123	93124	1	
3	Kreuzkopfeinheit	93135	93136	93137	93138	93139	1	
4	Griff & Schraube	93125	93126	93127	93128	93128	1	
5	Sperre	93115	93116	93117	93117	93117	1	
6	Führung	93043	93046	93049	93049	93049	2	
7	Kreuzkopf-Feststellmutter	93140	93141	93142	93143	93143	1	
8	Gewindestifte	40083	40090	40090	40090	40090	2	
9	Führungsfeder	40341	40035	40036	40036	40036	2	
10	Sperrfeder	40046	40030	40030	40030	40030	1	
11	Anlaufscheibe	93044	93010	93052	93052	93052	1	
12	Radstift	93310	93310	93112	93112	93112	4	
13	Führungsstift	30030	30030	30013	30013	30013	2	
14	Sperrstift	93019	93018	93018	93018	93018	1	
15	Unterer Bügelstift	93181	93008	93008	93008	93008	1	
16	Feststellmutter	30179	30143	30143	30143	30143	1	
17	Kopplungsbolzen	93155	93146	93156	93156	93156	1	
18	Griffe	Nicht benutzt	40196	40197	40197	40197	2	
19	Schneidrad	Siehe Bezugstabelle für Schneidräder, Abb. 2 auf Seite 2						
20	Kreuzkopfeinheit	93130	93131	93132	93133	93134	1	