



TUBE WORKING TOOLS

BRASS THREAD NIPPLE CUTTER

- Attachment for your drill.
- Easily trim back excess 1/2 inch brass thread – all combinations.
- To shave excess thread to desired length.



- The Blade also chamfers the inside and outside of all-threads.

Customer Code	Code	Description
	TTNC01	Trim-A-Thread Nipple Cutter

MAXXGASS (MAPP GAS) 400G CYLINDER

- Ideal for medium to heavy soldering and brazing.
- Burns longer and hotter and solders faster than propane.
- Made in Italy.



MAPP TORCH AND GAS KIT

- Kit includes:**
- 1 x EXTREME787 Self-Lighting Torch
 - 1 x plumBOSS maxxGASS Cylinder



Customer Code	Code	Description
	MG2	plumBOSS maxxGASS 400g Cylinder

Customer Code	Code	Description
	787MGKIT	EXTREME787 Torch & maxxGASS Kit

SELF-LIGHTING MAPP GAS TORCH

- Extreme Silver Swirl flame.
- Ideal for medium to heavy soldering and brazing.
- Trigger button instant start.
- Trade level, high quality torch.



FLINT GUN AND FLINTS

- Quality flint lighters and flint refills.
- For quick and easy ignition of oxygen/fuel gas cutting and welding torches.



Customer Code	Code	Description
	EXTREME787	Self-Lighting Torch

Customer Code	Code	Description
	FG01	Flint Gun
	FSP10	Spare Flints

TWO PIECE TUBE BENDERS

- Leaver type two-piece benders.
- For soft or hard copper, aluminium, and chrome plated tubing.
- 90° and 45° bends made by bending to indicators on forming head.
- Strong alloy head for long life and lightweight.
- Easy to separate handles for quick loading and working in confined spaces.
- Nylon guide for extra smooth finish.



QUAD BENDER

- For bending soft or annealed tubing only, including copper, aluminium, brass, steel, and stainless steel up to 0.8mm wall tubing.
- Cover four tubing diameters (3/16", 1/4", 5/16", 3/8") with one tool.
 - Ergonomic, offset handles allow bends up to 180 degrees.



Customer Code	Code	Description
	BALTB12	plumBOSS Tube Bender 2 piece 1/2" (AU Size)
Special Order	BALTB34	plumBOSS Tube Bender 2 piece 3/4" (AU Size)

Customer Code	Code	Description
	RD02742	Quad Bender 3/16, 1/4, 5/16, 3/8"

TUBE BENDERS



DEBURRING TOOLS

DEBURRING TOOL WITH POCKET CLIP

- For removing internal burrs on copper tubing.
- Features long-lasting high-speed blade, aluminium handle, and pocket clip.
- For copper, aluminium, and brass tubing.



Customer Code	Code	Description
	DEB0	Deburring Tool w/- Pocket Clip

CONE REAMER DEBURRING TOOL INNER/OUTER

- For copper, aluminium, and brass tubing.
- Reams both inside and outside edges of tube with three hollow ground tool steel cutters.
- Comfortable hand fit.

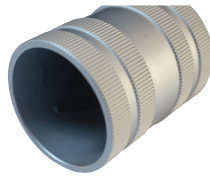


Customer Code	Code	Description
	RECCR	Cone Reamer Inner/Outer 3/16-1 1/2" OD

STAINLESS STEEL INNER/OUTER REAMER DEBURRING TOOL

For fast, clean inner and outer reaming/ deburring/bevelling of 3/8 inch – 2 inch copper, aluminium, brass and stainless steel tubing.

Stainless steel with hardened steel reamer blades.



Customer Code	Code	Description
	SSR10-54	Stainless Steel Inner/Outer Reamer 10-54mm

FLARING TOOLS

CORDLESS FLARING TOOL

The Cordless Flaring Tool Kit.

Approximately 5 seconds to flare.

Compact, lightweight, and powerful. The eccentric cone moves forward and rotates to push and expand the copper tube. The forward movement of the cone is then stopped by the clutch, which activates at a predetermined pressure. The clamped position of the copper tube is fixed using a stopper, eliminating unevenness when flaring.

The flared surface of the copper tube is given a clean finish.

Optional extras are clamps and liners to flare 3/8 and 1/2 inch.

Kit Includes:

- Cordless flare and battery
- Carry case
- Allen key
- Battery charger
- Clamp with liner 1/4 inch (6.35mm)
- Clamp with liner 3/8 inch (9.52mm)
- Clamp with liner 1/2 inch (12.70mm)
- Instruction manual



Customer Code	Code	Description
	RX424936	Cordless Flaring Tool 1/4, 3/8, 1/2" Battery

SPARES AND ACCESSORIES TO SUIT CORDLESS FLARING TOOL

	424950	Clamp without Liner
	424850	Liner 1/4" (6.35 mm)
	424852	Liner 3/8" (9.52 mm)
	424853	Liner 1/2" (12.70 mm)
	424854	Liner 5/8" (15.88 mm)
	424855	Liner 3/4" (19.05 mm)

QUICK FLARE



Quick Flare is a fast economical way of flaring 1/2 and 3/4 inch copper tube. Tube is inserted into tool and clamped by squeezing handles together, flare pins are then hit with a hammer until desired flare is formed.

Customer Code	Code	Description
	P218	Quick Flare 1/2 and 3/4"

45° ECCENTRIC FLARING TOOL

45° Flaring Tool Eccentric Cone.

Produces smooth flares with little effort. The large feed screw handle easily turns the eccentrically mounted, bearing supported flaring head, giving the tube a uniform flare. A built in clutch mechanism stops flaring at the proper time, preventing damage to the tubing and giving a smooth, even flare.

- S458 for 1/4, 5/16, 3/8, 1/2, 5/8 and 3/4 inch.



Customer Code	Code	Description
	S458	Flaring Tool 1/4-3/4" 45 deg



EXPANDER SET

- Plier type expanders that expand 1/2", 3/4" and 1 inch tubing.
- Heads made of stainless steel, not plated mild steel.
- Additional heads sold separately.



Kit includes:

- Expander tool
- Cone Reamer
- PBEXPH.5 Expander Head Universal 1/2 inch
- PBEXPH.75 Expander Head Universal 3/4 inch
- PBEXPH1 Expander Head Universal 1 inch

Customer Code	Code	Description
	PBEXP	Copper Tube Expander Set 1/2, 3/4, 1"

EXPANDER HEADS TO SUIT PBEXP



Customer Code	Code	Description
	PBEXPH3-8	Expander Head Universal 3/8"
	PBEXPH.5	Expander Head Universal 1/2"
	PBEXPH5-8	Expander Head Universal 5/8"
	PBEXPH.75	Expander Head Universal 3/4"
	PBEXPH7-8	Expander Head Universal 7/8"
	PBEXPH1	Expander Head Universal 1"

COPPER EXPANDERS

COLLET COPPER EXPANDERS

- Collet expanders for medium to large copper tube/pipe expansion.
- Compact and easy to use.
- Simply insert in annealed tube and turn nut until desired socket size is formed.
- Multiple sizes on each collet expander.



Customer Code	Code	Description
	CE2	Collet Tube Expander (1.5x2") 40x50mm
	CE4	Collet Tube Expander (3x4") 80x100mm
	CE6	Collet Tube Expander (5x6") 125x150mm
	CE8	Collet Tube Expander (6x8") 150x200mm

COPPER SHUT-OFF TOOLS

Designed to shut off and reshape 3/4" through 1" (CSO1R) and 1 1/4 - 2 inch (CSO2R) copper tubing. The tool swings open to go around the pipe. Fine threads on the screw provide smooth, easy tightening. Ratchet handle for easy leverage and to permit use in tight places. The bottom open area of the shut-off tool is used to reopen the tube and allow 70-75



percent return of flow. All parts are corrosion protected for long service life. Grease nipple for easy lubrication to keep it working smoothly. Support handle for easy positioning and grip.

Customer Code	Code	Description
	RD08201	Reed Copper Shut-Off Tool 3/4-1" - CSO1R
	RD08203	Reed Copper Shut-Off Tool 1 1/4-2" - CSO2R

MANUAL BRANCH FORMING FOR COPPER TUBE

Hand operated branch forming kits and individual tool components for copper tube. Eliminates up to 90% of T-fitting purchases. One brazed joint replaces 3 soldered joints. No need for tube cutting. 66% fewer joints. Less chance for leaks or call backs.

BRANCH FORMING TOOL KIT NO.1 1/2-1 INCH

KKBO1 Kit Includes:

- 1 x 1/2 inch Branch Former
- 1 x 3/4 inch Branch Former
- 1 x 1 inch Branch Former
- 1 x Adjustable Drill 3/8-2 1/8 inch
- 1 x Ratchet Wrench
- 1 x Marking Pliers
- 1 x File & Handle
- 1 x Plastic Toolbox



BRANCH FORMING TOOL KIT NO.2 1/2-2 INCH

KKBO2 Kit Includes:

- 1 x 1/2 inch Branch Former
- 1 x 3/4 inch Branch Former
- 1 x 1 inch Branch Former
- 1 x 1 1/4 inch Branch Former
- 1 x 1 1/2 inch Branch Former
- 1 x 2 inch Branch Former
- 1 x Adjustable Drill 3/8-2 1/8 inch
- 1 x Ratchet Wrench
- 1 x Marking Pliers
- 1 x File & Handle
- 1 x Plastic Toolbox



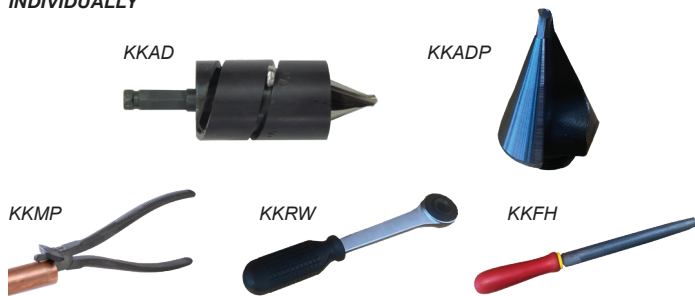
Customer Code	Code	Description	Size
	KKB01	Branch Forming Tool Kit No.1	1/2-1"

Customer Code	Code	Description	Size
	KKB02	Branch Forming Tool Kit No.2	1/2-2"

BRANCH FORMING



BRANCH FORMING TOOLS
INDIVIDUALLY



Customer Code	Code	Description
	KKAD	Adjustable Drill Tool 3/8"-2 1/8"
	KKADP	Adjustable Drill Point Only 3/8"-2 1/8"
	KKMP	Marking Pliers Dimpler
	KKRW	Ratchet Wrench
	KKFH	File and Handle 8"

BRANCH FORMERS
INDIVIDUALLY



Customer Code	Code	Description
	KKBF06	Branch Forming Tool 1/4"
	KKBF10	Branch Forming Tool 3/8"
	KKBF15	Branch Forming Tool 1/2"
	KKBF16	Branch Forming Tool 5/8"
	KKBF20	Branch Forming Tool 3/4"
	KKBF22	Branch Forming Tool 7/8"
	KKBF25	Branch Forming Tool 1"
	KKBF29	Branch Forming Tool 1 1/8"
	KKBF32	Branch Forming Tool 1 1/4"
	KKBF35	Branch Forming Tool 1 3/8"

Customer Code	Code	Description
	KKBF40	Branch Forming Tool 1 1/2"
	KKBF41	Branch Forming Tool 1 5/8"
	KKBF50	Branch Forming Tool 2"
	KKBF54	Branch Forming Tool 2 1/8"
	KKBF65	Branch Forming Tool 2 1/2"
	KKBF67	Branch Forming Tool 2 5/8"
	KKBF75	Branch Forming Tool 3" (Required Hole Size 42x50)
	KKBF100	Branch Forming Tool 4" (Required Hole Size 60x80)

T-DRILL COPPER BRANCH FORMING

Extremely fast and safe forming of copper branches off copper run tubes. Forming a 50mm branch will only take 60 seconds or less. Achieve better flow characteristics. Reduce cutting, welding (only one brazed joint), fitting costs, inspection costs, and risk of call backs due to leaks - your competitiveness and job profit will increase. Cut costs, save time, improve quality, increase profit. If a comparison is made between the installed cost of a tee fittings and T-DRILL joints, you will see an improved profit that approaches 70%. This can be shown clearly using a labour calculator.

T-DRILL POWER/BATTERY UNITS FOR COPPER

The heavy-duty **T-DRILL T-65** for copper tubes is the best solution for pulling branches up to 54mm off run tubes up to 108mm (with optional retrofit kit for up to 163.8mm run tubes).

Available in corded or battery versions. Power/battery unit and collaring heads can be purchased individually, however, if you're doing different size branches often then better value is found in purchasing a T-Drill kit.

The **T-DRILL T-35** is a smaller unit than the T-65.

The T-35 for copper tubes is suitable for pulling branches up to 35mm off run tubes up to 76mm.



T-65 Power Unit



T-65B Cordless Battery Unit



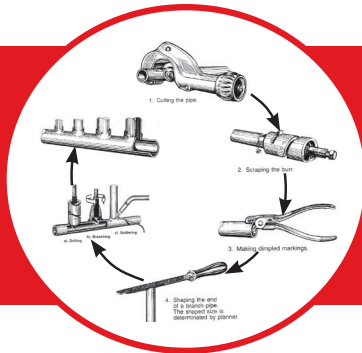
Customer Code	Code	Description
	TD5330681	T-65 Copper Branch Forming Power Unit
	TD5330694	T-65B Copper Branch Forming Cordless Battery Unit

Customer Code	Code	Description
	TD5330646	T-35 Branch Forming Power Unit



INNOVATIVE TRADE TOOLS

The common method of manual branch forming is still widely used. plumBOSS sell over 80 Branch forming kits per year.



If you're spending too much time manually pulling branches, you need to look at a faster method!

THIS IS IT!

Witness the incomparable power and speed of the T-Drill

T-Drill Branchforming Kit



T-65 Copper Branchforming Power Unit



WATCH VIDEO

Pull branches in seconds.
Count the savings after just one commercial job.


T-DRILL T-35 BRANCH FORMING KIT ½-1 INCH
Kit includes:

- TD35 Power Unit
- Detachable Power Cord
- ½ inch Collaring Head
- ¾ inch Collaring Head
- 1 inch Collaring Head
- Lubricant Applicator
- Hex Key
- Marking Pliers (KKMP)



Kit does not include the tube notcher

(This kit can be supplied with NZ copper size collaring heads. Heads are also adjustable.)

Customer Code	Code	Description
	BFK35CU	T-Drill Branch Forming Kit ½-1"

T-DRILL T-65 BRANCH FORMING KIT ½-2 INCH
Kit includes:

- T-65 Power Unit
- Detachable Power Cord
- ½ inch Collaring Head
- ¾ inch Collaring Head
- 1 inch Collaring Head
- 1¼ inch Collaring Head
- 1½ inch Collaring Head
- 2 inch Collaring Head
- Lubricant Applicator
- 2 x Hex Keys
- Marking Pliers (KKMP)



Kit does not include the tube notcher

(This kit can be supplied with NZ copper size collaring heads. Heads are also adjustable.)

Customer Code	Code	Description
	BFK65CU	T-Drill Branch Forming Kit ½-2"

T-DRILL COLLARING HEADS FOR COPPER


Customer Code	Code	Description
	TD5310408	T-Drill Copper Collaring Head 8mm (5/16")
	TD5310399	T-Drill Copper Collaring Head 10 mm (3/8")
	TD5310400	T-Drill Copper Collaring Head 12mm (1/2")
	TD5310401	T-Drill Copper Collaring Head 15 mm (5/8")
	TD5310464	T-Drill Copper Collaring Head 19mm (3/4")
	TD5310403	T-Drill Copper Collaring Head 22 mm (7/8")
	TD5310404	T-Drill Copper Collaring Head 28mm (1 1/8")
	TD5310405	T-Drill Copper Collaring Head 25mm (1")
	TD5310414	T-Drill Copper Collaring Head 32mm (1 1/4")
	TD5310411	T-Drill Copper Collaring Head 35 mm (1 3/8")
	TD5310412	T-Drill T-65 Copper Collaring Head 42mm (1 1/2")
	TD5310413	T-Drill T-65 Copper Collaring Head 54mm (2-2 1/8")

T-DRILL PILOT DRILLS TO SUIT STAINLESS STEEL


Customer Code	Code	Description
	TD6310558	Pilot Hole Drill Bit 17-19mm OD SS 9.9
	TD6310552	Pilot Hole Drill Bit 20-25mm OD SS 11.3
	TD6310553	Pilot Hole Drill Bit 25-30mm OD SS 12.5
	TD6310554	Pilot Hole Drill Bit 30-44mm OD SS 15.8
	TD6310555	Pilot Hole Drill Bit 45-51mm OD SS 17.3
	TD6310722	Pilot Hole Drill Bit 48-54mm OD SS 19.0

T-DRILL T-65B BATTERY BRANCH FORMING KIT ½-2 INCH
Kit includes:

- T-65 Battery Unit
- Battery
- ½ inch Collaring Head
- ¾ inch Collaring Head
- 1 inch Collaring Head
- 1¼ inch Collaring Head
- 1½ inch Collaring Head
- 2 inch Collaring Head
- Lubricant Applicator
- 2 x Hex Keys
- Marking Pliers (KKMP)



Kit does not include the tube notcher

(This kit can be supplied with NZ copper size collaring heads. Heads are also adjustable.)

Customer Code	Code	Description
	BFK65CU-BATT	T-Drill Battery Branch Forming Kit ½-2"

T-DRILL COPPER TUBE END NOTCHER

The Tube End Notcher is used for cutting and dimpling the branch tube ends to enable the best possible flow characteristics.

It cuts a half-moon shaped coupon from each side of the branch tube to allow full unrestricted flow and simultaneously presses in a dimple that rests on the rim of the tee acting as a depth stop. A second dimple 6mm higher acts as a point of inspection. The result is an inspectable brazed joint with the best possible flow characteristics.



For branch tube sizes up to 54mm.

Customer Code	Code	Description
	ND-54	T-Drill Tube End Notcher ND-54

T-DRILL STAINLESS STEEL BRANCH FORMING

The powerful T-DRILL T-65 SS for stainless steel is the best solution for pulling branches of 20-50mm in main run tubes up to 114mm (with optional clamping system for up to 300mm run tubes). Achieve better flow characteristics. Job profit will increase due to reduced cutting, welded joints, fitting costs, inspection costs and tube polishing at welding points. Extremely fast, form a 50mm branch in a few minutes.

Collaring heads and pilot drills purchased separately as per requirements.



Customer Code	Code	Description
	TD5330808	T-65 SS Machine for Collars OD 17-54mm

T-DRILL COLLARING HEADS FOR STAINLESS STEEL


Customer Code	Code	Description
	TD5050111	T-Drill S/Steel Collaring Head 21.3 (20-25mm)
	TD5050116	T-Drill S/Steel Collaring Head 26.9 (25-30mm)
	TD5050121	T-Drill S/Steel Collaring Head 33.7 (30-34mm)
	TD5050126	T-Drill S/Steel Collaring Head 42.4 (34-44mm)
	TD5050129	T-Drill S/Steel Collaring Head 48.3 (45-51mm)
	TD5310413	T-Drill T-65 Copper Collaring Head 54mm (2-2 1/8")