



**PN: 17107**  
**Model Number: 17M-SJWC4**  
**PN Instruction : 17000**



**Safe Jack Compact Wheel Chock Instruction Manual**



1. Unpack the 17M-SJWC4 and ensure that all parts are included:

Item	Model Number	PN	Qty	Description
1	17M-SJWC4	17107	4	Compact Wheel Chocks, (4 chocks) 2 pair with chain
2	17M-135CHAIN	17108	4	.135 UTILITY LINK CHAIN 340# ZINC PLATED (17M- 135CHAIN/ /10570C)

**If you are missing any parts please call 1-509-735-2106 immediately and reference which parts.**

The warnings, precautions, and instructions discussed in this manual cannot cover all possible conditions and situations that may occur. The operator must understand that common sense and caution are factors, which cannot be built into this product, but must be supplied by the operator.



**WARNING:** Do not allow anyone in or near the vehicle while using the jack. Sudden movement and weight shift can result in instability. Keep all personnel a safe distance away from the vehicle.



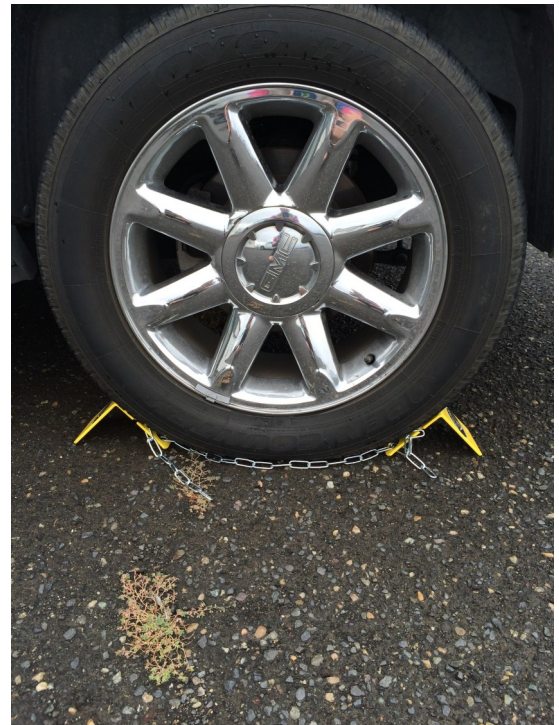
**WARNING:** Do not attempt to lift the vehicle on a side or longitudinal slope. The vehicle can slide or roll causing severe injury or death.



**WARNING:** Before lifting, place the vehicle's transmission in "PARK" for automatic transmissions and Low gear (1st gear) for manual transmissions. Set the vehicle's emergency brake. Then, block the wheel diagonal to the wheel that is being lifted, with wheel chocks. Failure to follow this instruction can result in severe injury or death to personnel.



**WARNING:** Wheel Chocks may lose effectivity in sand or soft soil.



Step 1: Place a wheel chock in front of and behind a wheel.

Connect the two wheel chocks together with chain as shown.

Step 2: Repeat step 1 with the wheel adjacent to the first wheel.

# SafeJacks.com

## (509) 735-2106



Safe Jack by Bogert Manufacturing Inc.  
3606 N. Swallow Ave. Ste 200  
Pasco, WA 99301 USA  
(509) 735-2106 Phone  
(800) 627-8088 Toll Free  
(509) 272-0280 Fax  
[www.safejacks.com](http://www.safejacks.com)  
[info@bogert-mfg.com](mailto:info@bogert-mfg.com)

