

AIO-5 Lite

Motorcycle Smart Dash Cam Manual

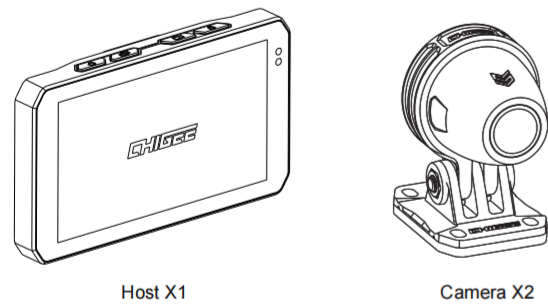
Product Overview / 01

MPACK0077

Introduction

Enjoy a safe ride with intelligent escort: CHIGEE AIO-5 Lite Motorcycle Smart Car, equipped with front and rear 1080P dual cameras, high-quality imaging capability, record riding road conditions videos at any time, relying on powerful main control computing power to develop intelligent functions such as mobile wireless projection, online navigation, BSD blind zone monitoring, etc. to make your ride safer and more convenient. 5-inch high-brightness display, peak brightness 1200 Nit, dual Bluetooth module to meet the motorcycle audio interactive scene and 10hz high-precision satellite positioning function, to provide you with a cutting-edge riding experience. AIO-5 Lite host supports IP67 dust and water resistance to easily cope with harsh environments. At the same time, it can be matched with a variety of optional accessories to customize a personalized riding experience, so that you can travel safely and enjoy a unique motorcycle intelligent journey.

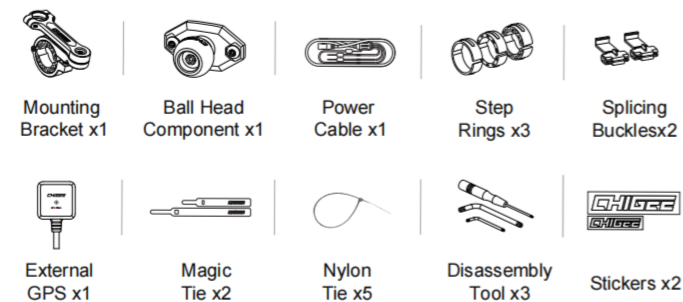
Body



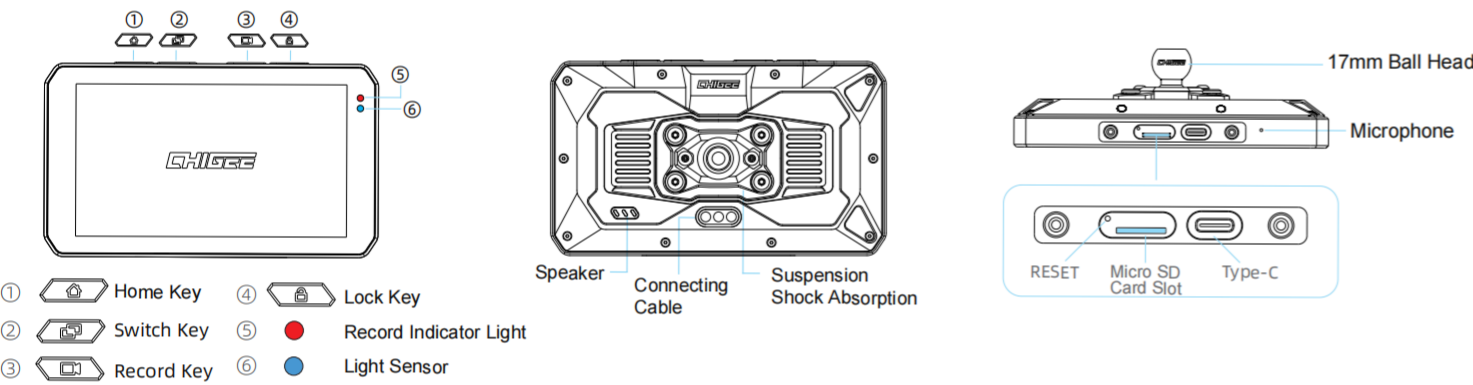
Host X1

Camera X2

Accessories

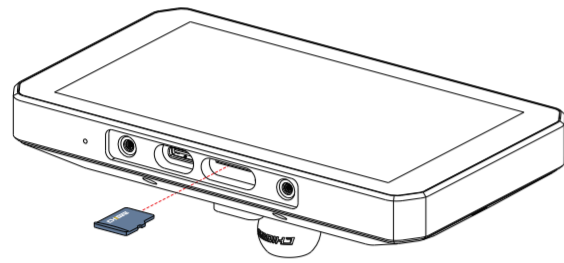


Components Details



Installation Guide / 02

SD Card Installation



3 Please use a microSD card with a U3 rating for transmission speed to ensure stable video recording, otherwise there may be risks of video stuttering and loss. (SD card needs to be purchased separately)

Image Storage Logic

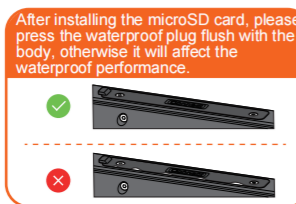
The AIO-5 lite comes with an internal 32GB storage space (approximately 29GB available) that can store photos and videos directly. When a microSD card is inserted, photos and videos will be stored on the microSD card.

• Collision Lock Files will not be overwritten in a loop. Please follow the host's prompts to delete the lock files, or format the storage space.

Suggestion

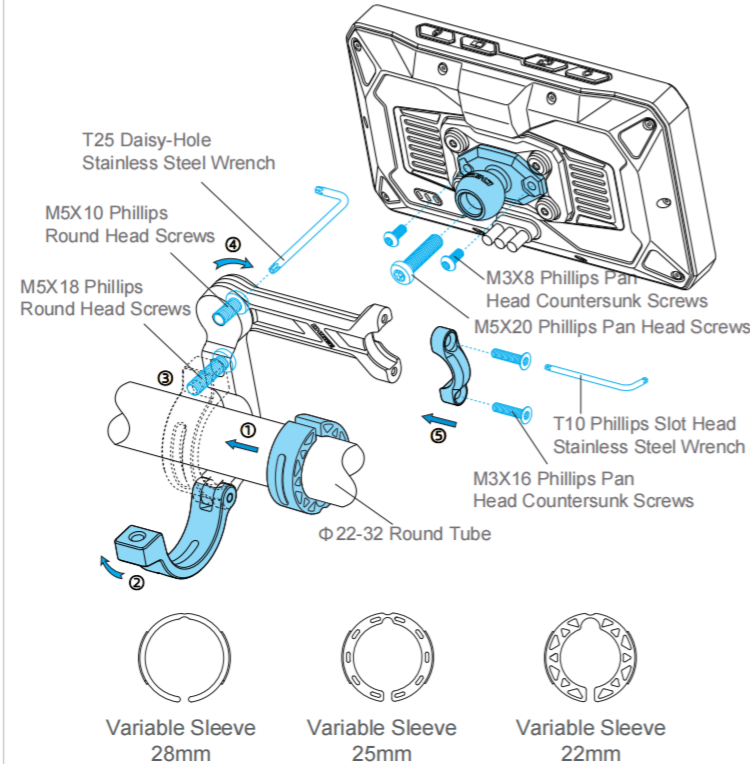
Regularly format the SD card to keep it in good condition.

This will erase all media files.
① Enter Settings
② Click "Storage" > "Format"

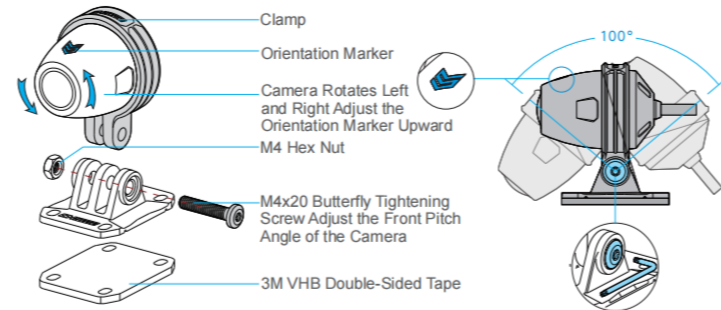


Device Mounting

Choose the appropriate size reducer ring according to the diameter of the handlebar, and use PVC gasket to avoid scratching the handlebar when the handlebar diameter is 32MM.



Camera Installation

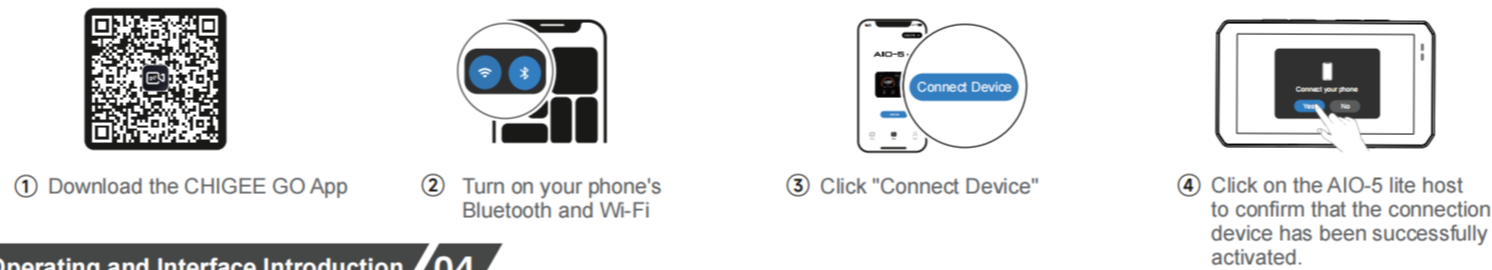


Installation Prompts

1. By loosening the screws, the camera can be rotated 360°. Please adjust the camera label to face straight up.
2. Use 3M VHB double-sided adhesive tape to stick to the desired position. Please wipe the surface of the object being stuck. When sticking, press with full force for more than ten seconds and wait for 30 minutes to ensure the best sticking effect.

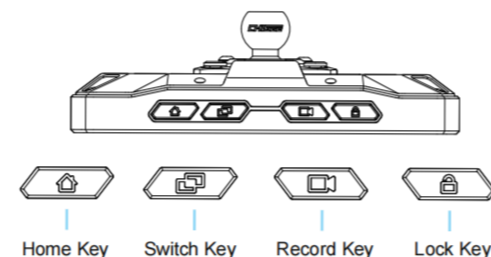
Product Activation / 03

Activation Steps:



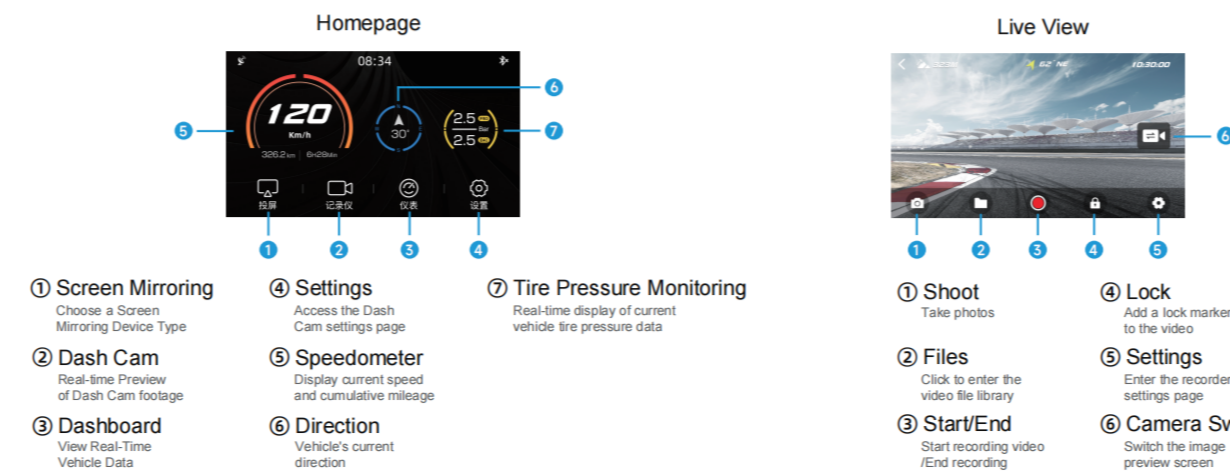
Operating and Interface Introduction / 04

Power Button



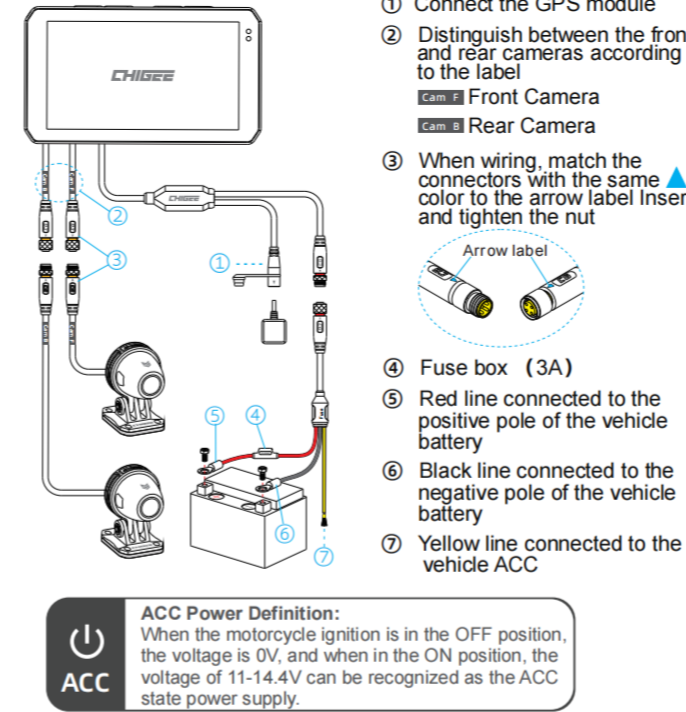
- ① The "Home Key" can be clicked to return to the home page in any interface.
- ② The "Switch Key" can be clicked to switch between the projection page and the dashboard page.
- ③ The "Record Key" can be clicked to enter the recorder preview page.
- ④ The "Lock Key" can be short-pressed to turn off the screen, and long-pressed for 2 seconds to lock the touch screen (suitable for rainy and snowy weather), and long-pressed for 10 seconds to forcibly restart.

Interface Introduction



- ① Screen Mirroring: Choose a Screen Mirroring Device Type
- ② Dash Cam: Real-time Preview of Dash Cam footage
- ③ Dashboard: View Real-Time Vehicle Data
- ④ Settings: Access the Dash Cam settings page
- ⑤ Speedometer: Display current speed and cumulative mileage
- ⑥ Direction: Vehicle's current direction
- ⑦ Tire Pressure Monitoring: Real-time display of current vehicle tire pressure data

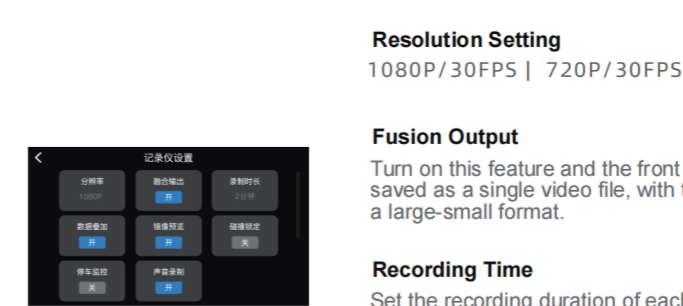
Wiring Diagram



- ① Connect the GPS module
- ② Distinguish between the front and rear cameras according to the label
Front Camera
Rear Camera
- ③ When wiring, match the connectors with the same color to the arrow label Insert and tighten the nut
- ④ Fuse box (3A)
- ⑤ Red line connected to the positive pole of the vehicle battery
- ⑥ Black line connected to the negative pole of the vehicle battery
- ⑦ Yellow line connected to the vehicle ACC

ACC Power Definition:
When the motorcycle ignition is in the OFF position, the voltage is 0V, and when in the ON position, the voltage of 11-14.4V can be recognized as the ACC state power supply.

Setting up the Dash Cam / 05



Resolution Setting
1080P/30FPS | 720P/30FPS

Fusion Output
Turn on this feature and the front and rear cameras will be saved as a single video file, with the images presented in a large-small format.

Recording Time
Set the recording duration of each video clip for the Motorcycle Dash Cam, available options: 1 minute, 2 minutes, 3 minutes.

Data overlay
Choose the data you need to overlay to the video files, options include: time, speed, and latitude/longitude. For more data, overlay in the CHIGEE GO APP.

Mirror Preview
Set the mirror correction to preview the inverted image, or set the rear camera mirror as a rearview mirror.

Collision Lock
Once activated, if the vehicle has an impact, the video of that time period will be marked as locked and will not be overwritten by the loop recording. Sensitivity options: High, Medium, Low.

Parking Monitoring
When the vehicle is in a parked state and is subjected to vibration, the device will silently record a 30-second video file, and the sensitivity can be set. Sensitivity options: High, Medium, Low.

Voice Recording
Microphone Volume Settings.

System Settings / 06



Display and Volume
Adjust the screen brightness and speaker volume, and enable the auto brightness mode.

Storage
Check the remaining capacity of the built-in storage and TF card, and format the operation. Please back up important video files before formatting.

Device
Customize the settings or view the features, available options: Tire Pressure Sensor, Bluetooth Headset, Remote Control, GPS, OBD, Blind Spot Monitoring.

Language
Set the display language. Options available: Simplified Chinese, Traditional Chinese, English, Japanese.

Time
Set the time and date.

Reset
Restore factory settings, all presets will be changed to default.

About
Display device SN code, version number, and Bluetooth name.

Video Download
Enter this page to enable the host's WiFi hotspot, and you can download videos by connecting the phone to WiFi.

Device Setup / 07



Tire Pressure
By installing a tire pressure monitoring sensor, you can read the real-time tire pressure and pop up a warning window when it reaches the alarm preset value, while issuing an alarm sound. The pressure data can be synchronized to the recording file in real time through data superposition.

Bluetooth Headset
For connection to Bluetooth headset in carlife or Android Auto mode.

Remote Control
By installing CGRC PRO remote control, you can lock the video, switch the interface, take photos, answer the phone and other operations.

GPS
View GPS signal strength.

OBD
Equip with a wireless Bluetooth OBD module to read engine real-time data, and the OBD data will be synchronized to the video file in real-time through data overlaying.

Blind Spot Detection
BSD Blind Spot Detection System, when a vehicle approaches from the rear side blind spot, the device will issue an audible and visual alarm.

BSD Disclaimer
Although the BSD Blind Spot Monitoring System is a useful auxiliary tool, drivers should always remain vigilant and not rely too heavily on the system. The system may have false alarms or missed alarms, so drivers should always keep a comprehensive view of their surroundings, using the BSD system as an aid rather than relying on it completely. This includes but is not limited to observing the rearview mirror, turning to confirm blind spot conditions, using turn signals and adjusting speed reasonably.

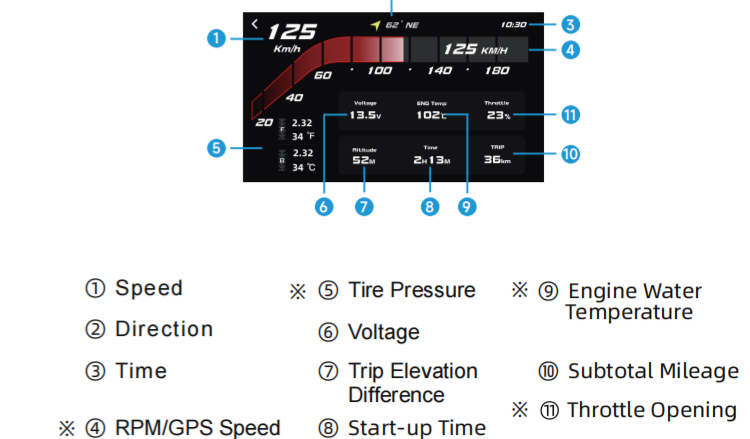
Function Description / 08

Wireless Mirroring



- CarPlay**: Connect your iOS device to the Bluetooth device (CHIGEE-XXXX) to enable Apple CarPlay.
- Android Auto**: Please connect the device Bluetooth to enable Android Auto
- Bluetooth**: Connect your phone to the device Bluetooth (CHIGEE-XXXX) to control music and answer calls.

Professional Dashboard



- ① Speed
- ② Direction
- ③ Time
- ④ RPM/GPS Speed
- ⑤ Tire Pressure
- ⑥ Voltage
- ⑦ Trip Elevation Difference
- ⑧ Start-up Time
- ⑨ Engine Water Temperature
- ⑩ Subtotal Mileage
- ⑪ Throttle Opening

Note: Data with * is optional equipment. Optional functional expansion parts can be displayed.

Tire Pressure Monitoring

Equip the Motorcycle Dash Cam with a Tire Pressure Monitoring Sensor to read the real-time tire pressure and alert you with a pop-up warning and an alarm sound when it reaches the preset value. The pressure data can be overlaid with the video file in real time.

External Tire Pressure Sensor



Battery life: 1year
battery replacement: BR1225
size parameters: 18.2x14.8mm
measurement accuracy: 0.01Bar
pressure measurement range: 0-8Bar

Built-in Tire Pressure Sensor



Battery life: 2 and a half years
battery replacement: needs to be returned to the factory for replacement
size parameters: 25x25x49.5mm
measurement accuracy: 0.01Bar
pressure measurement range: 0-8Bar



OBD

By installing the wireless Bluetooth OBD module, you can read real-time engine data. OBD data can be overlaid and synchronized in real-time to the recording file, helping you more effectively analyze the vehicle's driving status.



OBD Module

Data Types Available

- ⊗ Wheel Speed
- ⊙ Engine RPM
- ⬇️ Coolant Temperature
- ⬆️ Throttle Position
- ⚡ Intake Air Temperature

Remote Controller Pro

With the CG Remote Pro installed, you can switch interfaces, select apps, and answer calls.



CG Remote Pro

- Ⓜ️ "Answer/Left Key:
Short press - Screen projection page application operation or answer call when receiving a call.
Long press - Cycle switching between recorder preview page, projection, and instrument panel page.
- Ⓞ "Return/Confirm Key:
Short press - Select Confirm Key.
Long press - Return.
- Ⓜ️ "Hang up/Right Key:
Short press - Screen projection page application operation or call hang up.

CHIGEE GO APP 10

First connection

1. Download the CHIGEE GO APP from the Apple App Store or Android App Store.
2. Follow the instructions in the app to operate and connect the AIO-5 lite.



Scan and Download Now



1



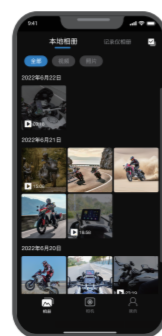
2

Enter the Homepage after running CHIGEE GO



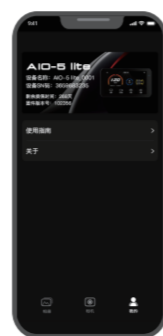
Connect Devices

Connect the AIO-5 lite to download video files and adjust recording parameters.



Album

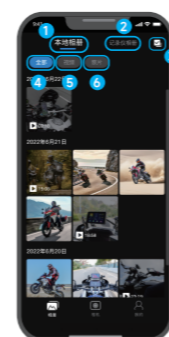
Visit the Motorcycle Dash Cam Album or the local album. Select the clips you need to download, and once the clips are downloaded, users can superimpose data and edit the video themselves.



My

Access the latest version of the User Manual, Troubleshooting Guide, and view the device code.

Album



- 1 Local Album: Downloaded Video Clips
- 2 Recorder Album: View Videos and Photos Recorded on the Host
- 3 "Multi-Select: Multiple Clips Can Be Deleted or Downloaded
- 4 "All" All: All Videos and Photos
- 5 "Videos" Videos: View Video Clips Only
- 6 "Photos" Photos: View Photos Only

Camera



- 1 Exit
- 2 Preview Switch
- 3 Resolution Setting
- 4 Album
- 5 Recording Switch
- 6 Dash Cam Settings

Video Editing

Downloaded video clips can be used to view real-time tracks or to overlay data.

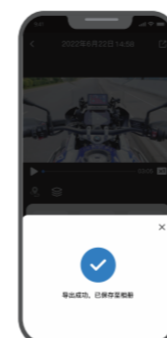


Real-time Track



Stacking

Export
After the video is overlaid with data, it can be exported to the local album for viewing.



Export

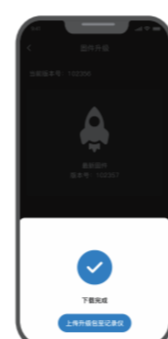
Maintenance and Care 11

Firmware Upgrade

The AIO-5 lite can be upgraded through the CHIGEE GO app. When there is a firmware available for update, there will be a corresponding prompt when connected to CHIGEE GO, please follow the prompts on the screen.



1. When there is a firmware available for update, please follow the system prompt to operate.



2. Follow the prompts to download the firmware, and after the download is complete, upload it to the AIO-5 lite host. After uploading, the upgrade will be automatically completed. (Please do not power off during the upgrade)

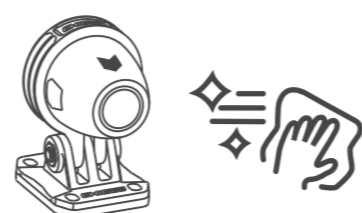
Reminder

Once upgrade failed, please follow the steps below:

1. Restart the Bluetooth, Wi-Fi, and host of the phone in sequence.
2. Restart CHIGEE GO and reconnect before upgrading.

Cleaning and Care Instructions

1. Ensure the lens glass is clean, foreign objects may scratch the lens, it is recommended to use a soft dry cloth to clean the lens.
2. During the use of AIO-5 lite, sand and dust may block the lens, please use water to flush.
3. All components should avoid using oil detergents and other organic solvents for cleaning, which may cause corrosion, loss of waterproof performance, and failure of protective coating.



Technical Specifications 12

The AIO-5 Lite Parameters

Host	
Size: 137x79x21mm	Weight: 320g
Display: 5 inch 1280x720 IPS	Processor: Dual Core A53
Peak Brightness: 1200Nit	RAM: 2GB
Rated Input Voltage: 12-18V	Internal Storage: 32GB
Low Voltage Protection Voltage: 12V	TF Card Expansion: 256GB MAX
Bluetooth: Bluetooth 5.0	Operating System: CGOS
Image Sensor: SONY IMX307	WIAN: 2.4G WIFI 5G WIFI
Sensor: Light Sensing, Accelerometer, Microphone	433M Wireless Communication: Supported (Receive Signal Only)
Waterproof Rating: IP67	Speaker: Supported
Remote Control : Optional	Tire Pressure Monitoring : Optional
OBD (On-Board Diagnostics): Optional	
Video	
Video Format: MP4	Resolution: 1920*1080P/1280*720P 30FPS
Field of View: 150°	Lens: F1.8 Aperture 6P Full Glass Lens

Compliance Standard: GB4934.1-2022

After-sales service 13

CHIGEE after-sales service strictly implements the "Consumer Rights and Interests Protection Law of the People's Republic of China" and the "Product Quality Law of the People's Republic of China" to provide the following after-sales three-package services:
Within the three-package period, you can enjoy free returns, exchanges and repairs according to this regulation, and repairs, exchanges and returns should be handled with invoices or purchase records.
1.7 days no reason to return, the user shall bear the freight.
2. If this product has the performance failure listed in the "Product Performance Failure Table", after being tested and confirmed, you can enjoy the following services for free.

Product Performance Failure Table

Performance Failure
1. Device won't power on
2. Camera image display is abnormal
3. Screen display is abnormal

Warranty Terms

Service Type	Service Policy
Return	Return within 7 days of activation for product quality reasons exchange or refund
Exchange	Exchange within 15 days of activation due to product quality issues.
Repair	Free repair within 365 days for product quality reasons

Non-warranty regulations

1. Repair, misuse, collision, negligence, abuse, liquid ingress, accidents, modification, and incorrect use of accessories without authorization.
2. Beyond the three-pack validity period.
3. Damage caused by force majeure.
4. Not in accordance with the product performance failure table, the situation of the listed performance failures.
5. Due to human factors, this product has caused the performance failures listed in the product performance failure table.

Product Safety Information

Please read all instructions and warnings before using this product. Improper use may cause damage to the product or personal safety.
01. Improper use of the product may cause damage to the product itself or endanger personal and property safety.
02. Consumers shall bear all consequences if they violate the product instructions and use the product improperly, and the company shall not assume any legal responsibility.
03. Non-professionals are strictly prohibited from disassembling this product.

Disclaimer
Thank you for purchasing the CHIGEE AIO-5 lite product. Before using this product, please read and follow all safety and compliance operating instructions provided in this document, otherwise it may cause harm to you and the people around you, damage this product or other surrounding items. Once you use this product, it is deemed that you have read this document carefully, understand, accept and agree to all the terms and conditions of this document and all related documents of this product. You agree to use this product only for legitimate purposes. You agree to be solely responsible for the use of this product and any consequences that may arise. CHIGEE AIO-5 lite is not responsible for any direct or indirect damage caused by the use of this product or any legal responsibility. This product and manual are owned by Shenzhen CHIGEE Technology Co., Ltd. and may not be copied or reproduced in any form without permission. The final interpretation of this document and all related documents of this product belongs to CHIGEE AIO-5 lite. If there are updates, no further notice will be given. Please visit www.chigee.com official website to get the latest product information.