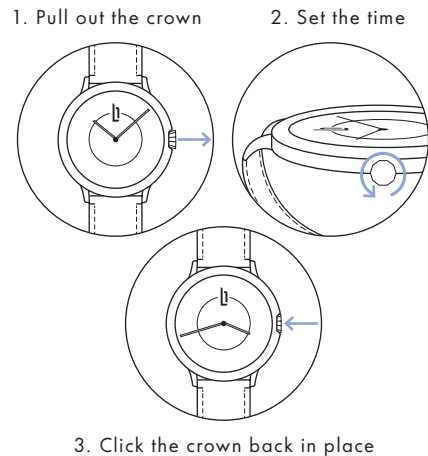


**HERE SHE IS!** Your new muse from Berlin:  
Brash, exquisitely cultured and  
always on the cutting edge.

Here she is. Your new watch. A unique declaration  
of love to the urban feeling. With all of its stories,  
analogies and exclusive details. And in terms of  
sustainability, it is at the forefront. In short: Berlin  
on your wrist.

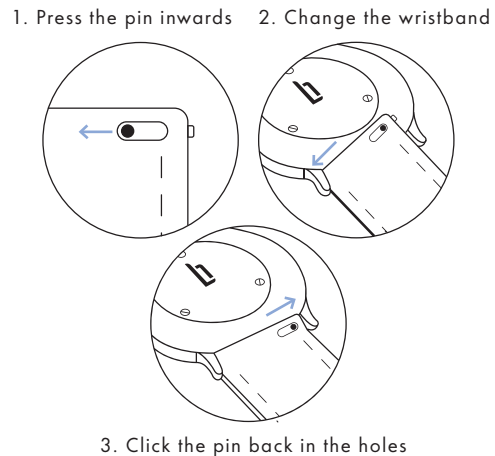
A. **GETTING TO KNOW  
EACH OTHER**

**SETTING THE  
TIME** Playing around on the first date  
is the new kissing. Don't be shy.  
It's what you both want.



B. **DON'T HESITATE**

**SWAPPING  
WRISTBANDS** Commitment issues? Why not try  
something else? No problem with  
our changeable wristbands.



C. **CHANGE IT UP**

**CARE  
INSTRUCTIONS** A lot of love has gone into the  
creation of your watch. Here are  
some tips to keep it in shape.

We've made sure that your watch is water resistant  
up to 5 ATM. This means that it's well-protected from  
small splashes of water, but we wouldn't recommend  
deepsea diving.

If the battery runs out of power, your trusted jeweler or  
watchmaker can easily replace it for you.

Our natural leather straps may change their  
appearance over time and develop a unique patina.  
Specks of dust can easily be wiped away with a damp  
cloth. However, we recommend avoiding getting the  
strap too wet.

Our mesh straps made from stainless steel are resistant  
to the effects of humidity.

D. **GIVE AND TAKE**



LILIENTHAL BERLIN

**ADDRESS**

Lilienthal Lifestyle GmbH  
Boxhagener Str. 78  
10245 Berlin, Germany

[www.lilienthal.berlin](http://www.lilienthal.berlin)

**GUARANTEE**

From the date of purchase, you have a 24-month warranty for any and all material and manufacturing defects. If you have a warranty claim, please contact our Customer Service. Of course, this is not a free ticket. We can't do anything for damage you cause. That's the deal, right?

**RECYCLING & DISPOSAL**



And when its time is up? Used electrical appliances and batteries must not be disposed of in private household waste but must be handed in at authorized collection depots. This way, you ensure environmentally-friendly disposal and recycling of all parts. Thank you for caring!

**INSTRUCTIONS**

4 steps towards  
the perfect relationship