

Items you will need to set up the PetPal WiFi Automatic Pet Feeder.

1) RJ45 Cable (Ethernet Cable)



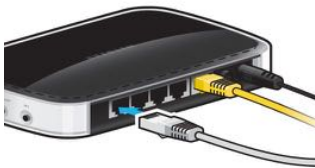
2) Pliers



3) Smart Phone Android, or IOS:



4) Physical access to your WiFi Router:



5) Paper Clip – Used to reset the PetPal.



Items enclosed in your PeTreat Box:



The box is 26 inches by 15 inches by 13 inches and weighs 20 lbs
The box is 66 cm by 28 cm by 33 cm and weighs 9 KG

In the small box you will find the following items:



- 1) The black top containing all electronics including camera, speaker, microphone, WiFi, motor, and control boards.



- 2) Inside the small box you will also find a plastic bag containing the following items:



(a) Power Supply (b) 2 R clips (c) Cotter Pin (d) Motor Coupler (e) Antenna

3) Stainless steel parts:



Outer tube

Large bounce plate

Small bounce plate

Bowl



Hopper

Mechanical Assembly:

1) Connect the Motor Coupler to the Hopper:

Items Needed: Cotter Pin, Motor Coupler, Hopper, and Pliers



Instructions:

Line up the hole in the ACME Screw, and the hole in the Motor Coupler. Put the Cotter Pin through the holes, and use the pliers to help bend the Cotter Pin.



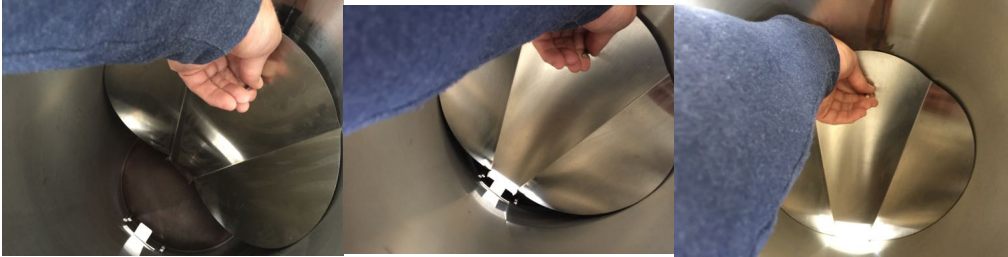
After you have finished the end result should look like the above photo.

2) Place the Large Bounce Plate in the Hopper.

Items Needed: Outer Tube, and the Large Bounce Plate.

Instructions:

Holding the tab on the Large Bounce Plate, and push the small end first into the top of the Outer Tube. Use the tab below where the food exits the Outer Tube to guide the small end of the Large Bounce Plate.



3) Place the Small Bounce Plate in the Outer Tube Assembly.

Items Needed: Outer Tube Assembly, and the Small Bounce Plate.



Place the Small Bounce Plate on top of the Large Bounce Plate inside the Outer Tube Assembly. The round section of the Small Bounce Plate should be leaned against the front of the Outer Tube.

4) Place the Hopper Assembly inside the Outer Tube Assembly.

Items Needed: Outer Tube Assembly, Hopper Assembly.



Place the Hopper Assembly inside the Outer Tube Assembly as show in the photos.

5) Place Bowl on the front of the Outer Tube Assembly.

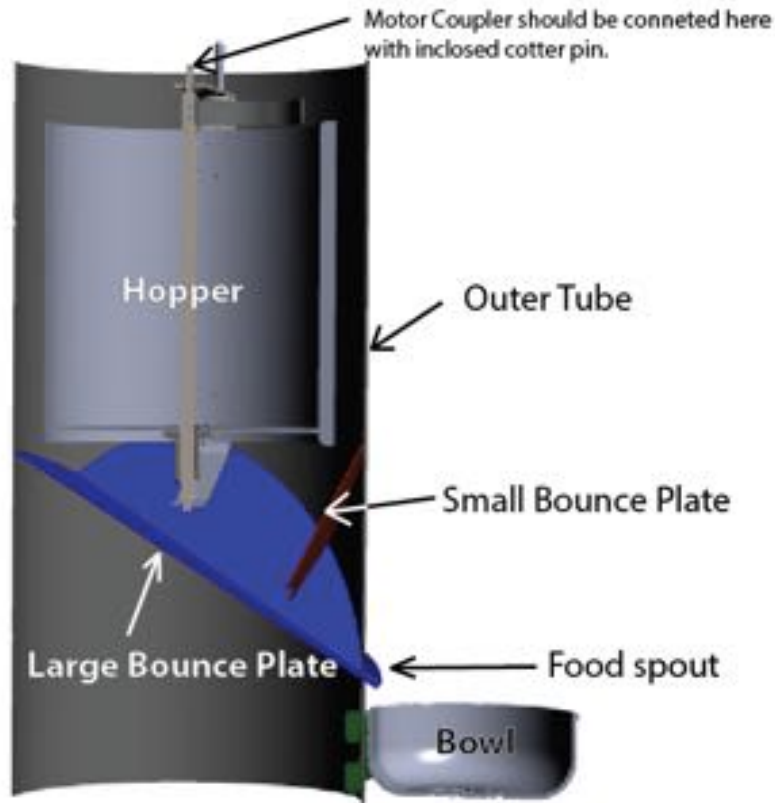
Items needed: Outer Tube Assembly, and the Bowl.



Instruction:

Place the 4 tabs on the Bowl inside the 4 holes under the food spout and push down with your thumb. Please note that the bowl should not touch the floor. This is to so that you may ant-proof your feeder if required.

Assembled stainless steel PetPal by PeTreaT LLC.



6) Screw the Antenna onto the Antenna Connector on the side of the Top.

Items needed: Top, and the Antenna.

Instruction:

Screw the Antenna onto the Antenna Connector on the side of the Top. Only tighten finger tight, there is no need to turn with more force than your finger tips can support.



7) Place the Top on the Outer Tube Assembly.

Items needed: Outer Tube Assembly, and the Top.

Instruction:

Line up the two pins on the Outer Tube Assembly with the holes on the Top, then slide the top onto the Outer Tube Assembly.



8) Lock the top from predators like raccoons.

Items required: Completed PetPal and the R Clips.

Instruction:

Place the clips as shown in the photos below.



Check out the Videos on our YouTube Channel, link is on www.petreat.com