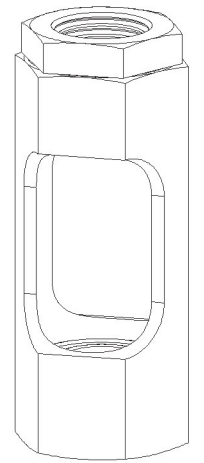
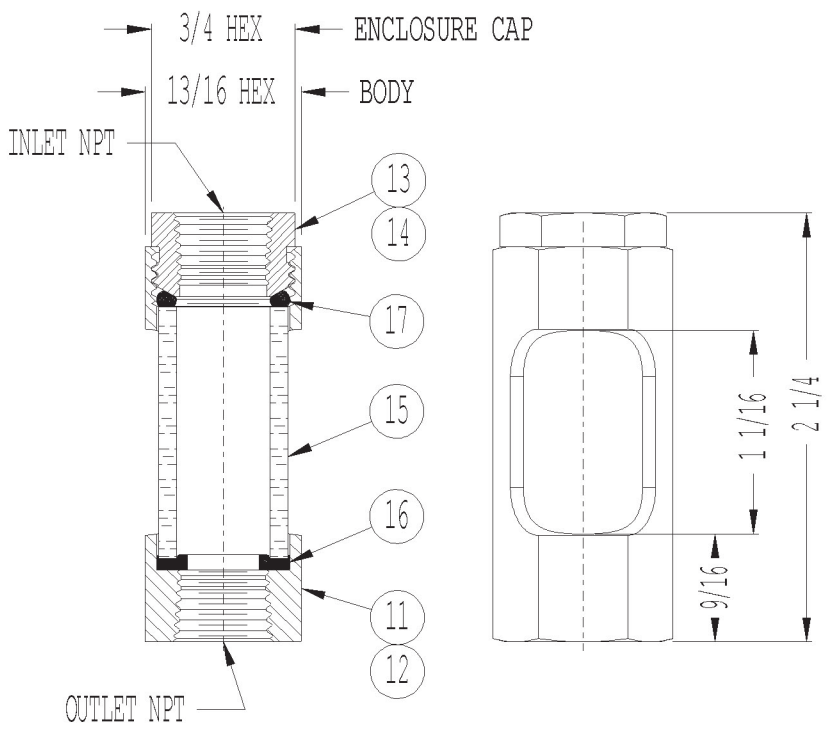


REV	CO NO	CHANGE	BY	DATE	APVD
E	6823	OBS #11 & #12 ASSEMBLY, REDRAWN	RH	12-03-86	RB
F	13644	PRINT REDRAWN	SD	08-09-02	MW
-	-	-	-	-	-



A-715-2
SCALE 1:1

- ① ASSEMBLY - 1/8 NPT INLET & OUTLET
- ② ASSEMBLY - 1/4 NPT INLET & OUTLET

1	1	BUNA	A-2699-27	O-RING 1/2 ID x .103 C/S	17
1	1	BUNA	A-2698-2	GASKET 11/16 OD x 3/8 ID x 5/64 THK	16
1	1	GLASS	A-2693-3	SIGHT 11/16 OD x 1 5/16 IG	15
1		PLATED STEEL	B-986-15	ENCLOSURE CAP 1/4 NPT	14
	1	PLATED STEEL	B-986-14	ENCLOSURE CAP 1/8 NPT	13
1		PLATED STEEL	B-986-2	BODY 1/4 NPT	12
	1	PLATED STEEL	B-986-1	BODY 1/8 NPT	11
X		---	---	ASSEMBLY 1/4 NPT INLET & OUTLET	2
	X	---	---	ASSEMBLY 1/8 NPT INLET & OUTLET	1
G2	G1	MATERIAL	DWG NO	DESCRIPTION	ITEM
	QTY				

REF.
A-4954 ASSEMBLY - STAINLESS STEEL

TOLERANCES UNLESS OTHERWISE SPECIFIED FRACTIONAL ± 1/64 DECIMAL .XX ± .020 DECIMAL .XXX ± .005 DECIMAL .XXXX ± .002 ANGLES ± 1 DEG ASSEMBLIES: ALL DIMENSIONS ARE REF.	SCALE: FULL	DATE	TITLE: WINDOW FLOW SIGHT ASSEMBLIES - 1/8 NPT I/O & 1/4 NPT I/O STYLE: SF	DRAWING NUMBER:	REV F 08-09 2002
	DRAWN: SD	08-09-02		A-715	
	APV'D: MW	08-09-02			