

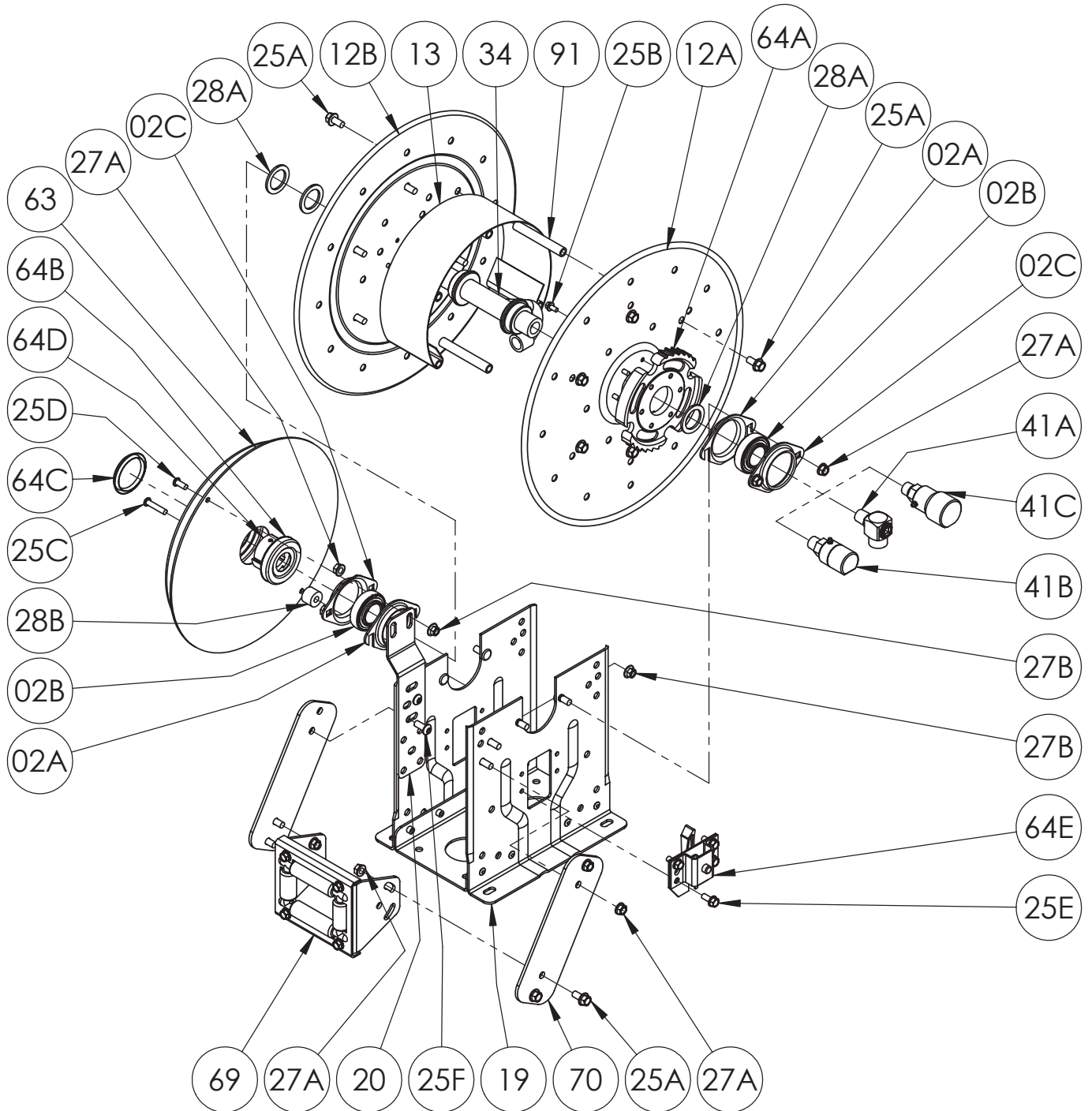


Hannay Reels®

The reel leader.

Hannay Reels, Inc., 553 State Route 143
Westerlo, NY 12193
Telephone 518-797-3791 • Toll Free 1-877-GO-REELS (467-3357)
FAX 1-800-REELING (733-5464)
INT'L FAX (518) 797-3259
Website: www.hannay.com
E-mail: reels@hannay.com

ISO 79 PARTS LIST N-700 SERIES Spring Retractable Reels For Single Hose



**PARTS LIST
ISO 79
N-700 SERIES**

When ordering parts

BE SURE TO SPECIFY COMPLETE MODEL NUMBER and SERIAL NUMBER OF REEL.

USE PART NUMBER!

<u>Item No.</u>	<u>Description</u>	<u>PART NUMBER</u>	<u>Quantity</u>
02A	Self Aligning Bearing Holder (Slotted), per P02A-00090 (Steel E-Coated).....	9902.2801	2
02B	1" Self Aligning Bearing Insert (Plated)	9902.1500	2
02C	Self Aligning Bearing Holder, per P02A-00080 (Steel E-Coated)	9902.2800	2
02D	1" Self Aligning Bearing for N Series Complete (Items 02A, 02B and 02C)	9902.2600	2
12A	Front Disc.....	Spec Model	1
12B	Back Disc (Includes Disc Washer for 23-24 and larger Discs).....	Spec Model	1
13	10-1/2" Diameter 304 SST Wrap Around Drum (Specify Model)	9905.0138	1
13	15-1/2" Diameter 304 SST Wrap Around Drum (Not Shown) (Specify Model)	9905.0178	1
13	8" Diameter 304 SST Wrap Around Drum (Not Shown) (Specify Model)	9905.0128	1
19	N Series Spring Reel Frame Assembly	Spec Model	1
20	N Series Spring Mounting Bracket, per P20A-00280 (for "B", "G" & "J" Springs)	9922.0050	1
25A	3/8"-16 x 3/4" Spinlock Bolt	9904.2201	9, 16 or 24
25B	1/4"-20 x 1/2" Spinlock Bolt (Ratchet Wheel)	9904.1058	6
25C	5/16"-18 x 1-1/2" Hex Socket Button Head Screw (For "J" & "C" Springs)	9904.9104	1 or 2
25D	5/16"-18 x 3/4" Hex Socket Button Head Screw (For "J" Spring)	9904.9101	1
25E	5/16"-18 x 3/4" Thread Cutting Hex Head Bolt (For Ratchet Locking Ass'y)	9958.0055	4
25F	3/8"-16 x 7/8" Socket Head Cap Screw	9904.9201	4
25G	3/8"-16 x 1-1/2" Spinlock Bolt (For "B" & "G" Springs) (Not Shown)	9904.2204	2
25H	3/8"-16 x 3/4" Spinlock Bolt (For "B" & "G" Springs) (Not Shown)	9904.2201	2
25I	1/4"-20 x 3/4" Spinlock Bolt (Ratchet Wheel) (8" Drum Reels Only) (Not Shown)...	9904.1060	6
25J	3/8"-16 x 3/4" Hex Head Cap Screw (8" Drum Reels Only) (Not Shown).....	9904.1201	5
27A	3/8"-16 Spinlock Nut	9904.6200	12 or 16
27B	5/16"-18 Large Flange Spinlock Nut (For "J" & "C" Springs).....	9904.6100	2
28A	1-7/8" O.D. x 1-5/16" I.D. x 1/8" Thick Hub Spacer, per P28A-00360 (Plastic).....	9954.0021	3 or 5
28B	Spring Spacer, per P28A-00070 (For "C" and "J" Springs)	9922.0033	1
28C	Oval Spring Spacer, per P28A-00020 (For "B" & "G" Springs) (Not Shown)	9922.0032	1
28D	1/2" Thick Spring Spacer, per P28A-00330 (For "C" Spring) (Not Shown)	9954.0015	1
28E	3/8" Flat Washer (For "C" Spring) (Not Shown).....	9954.0007	1
29	Woodruff Key #9 for Spring Arbor (3/16" x 3/4") (Not Shown)	9916.0080	1
34	1/2" Welded Barstock Hub Assembly (Specify Model and Fittings)	9901.0631	1
34	1/2" SST Welded Barstock Hub Assembly (Specify Model and Fittings)	9901.0634	1
41A	1/2" 90 Degree MxF Balanced Pressure Swivel Joint 3000 PSI, BUNA	9927.8138	1
41B	1/2" 90 Degree MxF Full Flow Swivel Joint 5000 PSI, AFLAS.....	9927.8151	1
41B	1/2" 90 Degree Oxygen SST MxF Full Flow Swivel Joint 3000 PSI, VITON	9927.8577	1
41C	1/2" 90 Degree MxF Oxygen Full Flow Swivel Joint 6000 PSI, VITON	9927.8177	1
63	"J" Spring w/ Arbor (Item 64D).....	9921.0030	1
63	"B" Spring w/ Arbor (Item 64D) (Not Shown).....	9921.0015	1
63	"G" Spring w/ Arbor (Item 64D) (Not Shown)	9921.0021	1
63	"C" Spring w/ Arbor (Item 64D) (Not Shown).....	9921.0018	1
64A	Ratchet Wheel and Hardware (Item 25B), per P64A-00120	9922.0015	1
64B	Dust Cap for Inner Spring Side.....	9922.0036	1
64C	Dust Cap for Outer Spring Side.....	9922.0037	1
64D	Spring Arbor, per P64A-00110 (For "B", "G", "J" or "C" Springs)	9922.0002	1
64E	Right Hand Ratchet Locking Assembly Complete (Refer to ISO-207 for Individual Parts)	9922.0312	1
64E	Left Hand Ratchet Locking Assembly Complete (For Reverse Springs ONLY) (Refer to ISO-207 for Individual Parts)	9922.0311	1
69	N204 Complete Roller Assembly for Model N716	9939.0111	1
69	N203 Complete Roller Assembly for Model N715 (Not Shown).....	9939.0110	1
69	N206 Complete Roller Assembly for Model N718 (Not Shown).....	9939.0113	1
70	N Series Single Roller Arm (Specify Model).....	9941.0030	2
91	4" Long Anodized Threaded Spacer Pipe for Model N716	9904.0308	5, 6 or 10
91	3" Long Anodized Threaded Spacer Pipe for Model N715 (Not Shown)	9904.0306	5, 6 or 10
91	6" Long Anodized Threaded Spacer Pipe for Model N718 (Not Shown)	9904.0312	5, 6 or 10