

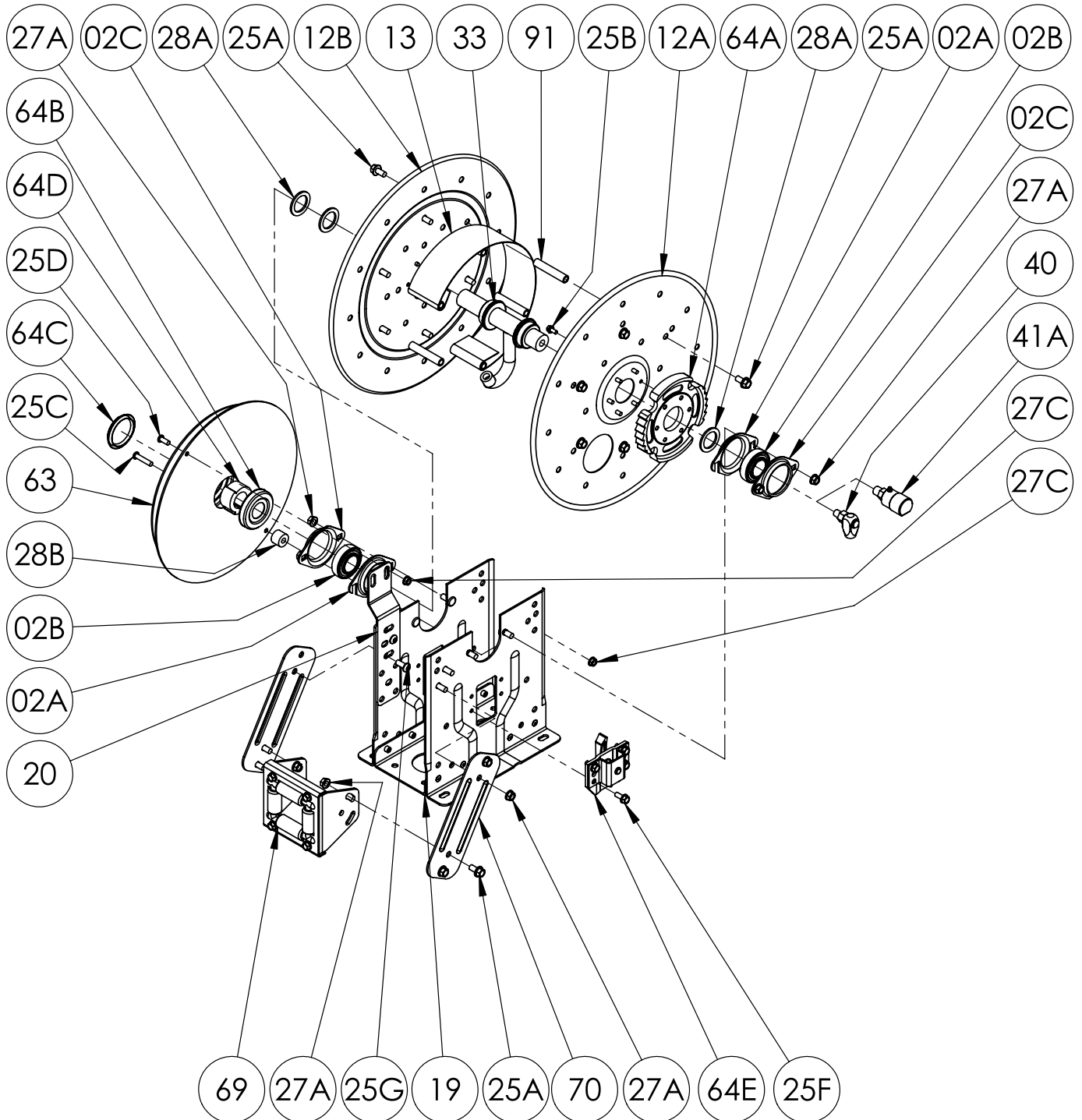


Hannay Reels®

The reel leader.

Hannay Reels, Inc., 553 State Route 143
Westerlo, NY 12193-0159
Telephone 518-797-3791; Toll Free 1-877-GO-REELS (467-3357)
FAX 1-800-REELING (733-5464)
INT'L FAX (518) 797-3259
Website: www.hannay.com
E-mail: reels@hannay.com

ISO 92 PARTS LIST N-500 SERIES



Hannay ISO Parts Lists are available
at www.hannay.com

**PARTS LIST
ISO 92
N-500 SERIES**

When ordering parts
BE SURE TO SPECIFY COMPLETE MODEL NUMBER and SERIAL NUMBER OF REEL.
USE PART NUMBER!

<u>Drawing No.</u>	<u>Description</u>	<u>PART NUMBER</u>	<u>Quantity</u>
02A	Self Aligning Bearing Holder (Slotted) (Steel E-Coated), per P02A-00090	9902.2801	2
02B	1" Self Aligning Bearing Insert Plated	9902.1500	2
02C	Self Aligning Bearing Holder (Steel E-Coated), per P02A-00080	9902.2800	2
02D	1" Self Aligning Bearing for N Series Complete (Includes 02A, 02B and 02C)	9902.2600	2
12A	Front Disc	Spec Model	1
12B	Back Disc (Includes Disc Washer for 23-24 and larger Discs)	Spec Model	1
13	10-1/2" Diameter 304 SST Wrap Around Drum (Specify Model)	9905.0138	1
13	15-1/2" Diameter 304 SST Wrap Around Drum (Not Shown) (Specify Model).	9905.0178	1
13	8" Diameter 304 SST Wrap Around Drum (Not Shown) (Specify Model)	9905.0128	1
19	N Series Spring Reel Frame Assembly	Spec Model	1
20	Universal Spring Mounting Bracket for N Series (for "J" Spring), per P20A-00280	9922.0050	1
25A	3/8"-16 x 3/4" Spinlock Bolt	9904.2201	9,16 or 24
25B	1/4"-20 x 1/2" Spinlock Bolt (For Ratchet Wheel)	9904.1058	6
25C	5/16"-18 x 1-1/2" Hex Socket Button Head Screw (For "J", "C" & "L" Springs)	9904.9104	1 or 2
25D	5/16"-18 x 3/4" Hex Socket Button Head Screw (For "J" Spring).....	9904.9101	1
25E	5/16"-18 x 3/4" Spinlock Bolt (For Roller Ass'y)	9904.2101	4
25F	5/16"-18 x 3/4" Thread Cutting Hex Head Bolt (For Ratchet Locking Ass'y)	9958.0055	4
25G	3/8"-16 x 7/8" Socket Head Cap Screw.....	9904.9201	4 or 9
25H	3/8"-16 x 7/8" Panhead Knurled Bolt (For N Series Bearings).....	9904.4276	4
25I	1/4"-20 x 3/4" Spinlock Bolt (For Ratchet Wheel on 8" Drum Reels) (Not Shown) .	9904.1060	6
27A	3/8"-16 Spinlock Nut	9904.6200	12
27B	5/16"-18 Small Flange Spinlock Nut (For Roller Ass'y).....	9904.5100	4
27C	5/16"-18 Large Flange Spinlock Nut (For "J" & "C" Springs).....	9904.6100	2
28A	1-7/8" O.D. x 1-5/16" I.D. x 1/8" Thick Hub Spacer (Plastic), per P28A-00360	9954.0021	3 or 5
28B	Spring Spacer (For "C", "L" and "J" Springs), per P28A-00070	9922.0033	1
28E	1/2" Thick Spring Spacer (For "C" & "L" Springs) (Not Shown), per P28A-00760 ..	9954.0015	1
28F	Disc Washer (Ratchet Spacer for 8" Drum Reels) (Not Shown), per P28A-00710 .	9965.0015	1
29	Woodruff Key #9 for Spring Arbor (3/16" x 3/4") (Not Shown)	9916.0080	1
30A	1/4" x 3/8" Blind Pop Rivet (For Frame Assembly)	9922.0058	8
30B	3/16" x 3/4" Stainless Steel Cotter Pin for N Series Ratchet.....	9922.0028	1
33	1/4" Welded Steel Barstock Hub Assembly (Specify Model and Fitting)	9901.0131	1
33	3/8" Welded Steel Barstock Hub Assembly (Specify Model and Fitting)	9901.0431	1
40	1/4" 90 Degree MxF Steel Balanced Pressure Swivel Joint 10,000 PSI, BUNA.....	9925.8111	1
40	1/4" 90 Degree MxF Steel Balanced Pressure Swivel Joint 10,000 PSI, VITON....	9927.8114	1
41A	3/8" 90 Degree MxF Steel Full Flow Swivel Joint 5,000 PSI, BUNA	9926.8151	1
41B	3/8" 90 Degree MxF Steel Full Flow Swivel Joint 8,000 PSI, VITON (Not Shown).	9926.8161	1
63	"J" Spring w/ Arbor (Item 64D)	9921.0030	1
63	"L" Spring w/ Arbor (Item 64D) (Not Shown)	9921.0052	1
63	"C" Spring w/ Arbor (Item 64D) (Not Shown)	9921.0018	1
64A	Ratchet Wheel & Hardware (Item 25B), per P64A-00120	9922.0015	1
64B	Dust Cap for Inner Spring Side	9922.0036	1
64C	Dust Cap for Outer Spring Side	9922.0037	1
64D	Spring Arbor for "J", "L" or "C" Springs, per P64A-00110	9922.0002	1
64E	Right Hand Ratchet Locking Assembly Complete (Per ISO-207).....	9922.0312	1
64E	Left Hand Ratchet Locking Assembly Complete (For Reverse Springs ONLY) (Per ISO-207)	9922.0311	1
69	N203 Complete Roller Assembly for Model N515, per ISO-208.....	9939.0110	1
70	N Series Single Roller Arm (Specify Model), per P70A-03020	9941.0030	2
91	3" Long Anodized Threaded Spacer Pipe for Model N715, per P28A-00880...	9904.0306	5, 6 or 10