

GENERAL PUMP*A member of the Interpump Group***DCG5010****Compensating Rear Inlet Spray Gun****SPECIFICATIONS**

Part Number:	DCG5010	
Maximum Volume:	10.5 GPM	
Maximum Pressure:	5000 PSI	
Maximum Temperature:	320° F	
Port Sizes:	Inlet	3/8" NPT-F
	Outlet	1/4" NPT-F
Dimensions:	9.5" x 5.5" x 1.5"	
Weight:	1.5 lbs.	
Material:	Brass, Stainless Steel, Plastic, Viton	
REPAIR KIT	2100249	

FEATURES

- Exclusive patent-pending GP design
- Unique design compensates for changes in pressure
- Trigger designed for low fatigue
- Allows for continued use without tiring hand
- All flow passages designed for minimum pressure drop - maximum flow
- Fluorocarbon seals for maximum high temperature performance
- Large comfortable hand grip to accommodate work gloves
- Additional venting for excellent high temperature performance
- Durable glass-filled housing and trigger in Zytel (high tech nylon)



General Pump
is a member of
the Interpump Group

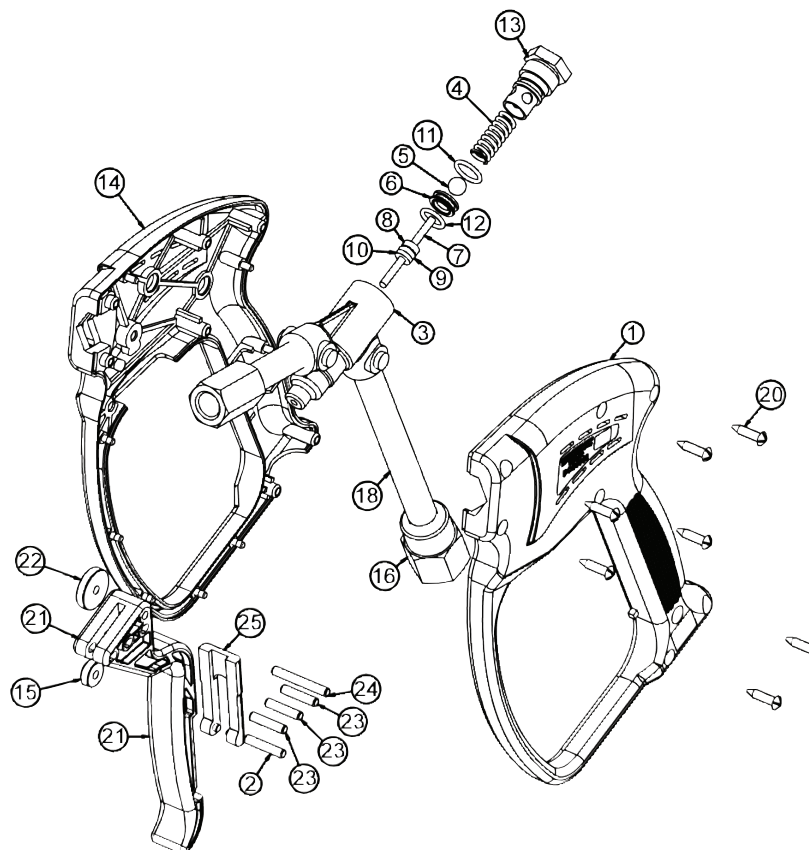


DCG5010

Compensating Rear Inlet Spray Gun

GENERAL PUMP *A member of the Interpump Group*

PARTS LIST



Item	Part No.	Description	Qty.	Item	Part No.	Description	Qty.
1	2660152	Housing, Gun	1	14	2660153	Housing, Gun	1
2	2510157	Pin, Trigger	1	15	2520087	Roller	1
3	2452011	Forging, Gun	1	16	2510003	Fitting, Inlet, Gun	1
4*	2720001	Spring	1	17	2550049	Tube, Outlet	1
5*	2520004	Ball	1	18	2550048	Tube, Inlet	1
6*	2520085	Seat, Gun	1	19	2510081	Fitting, Outlet	1
7*	2520084	Pin, Forging	1	20	2200002	Screw	7
8*	2510004	Washer, Brass	1	21	2660157	Trigger	1
9*	2701048	O-ring	1	22	2520086	Roller, Trigger	1
10*	2710018	Washer, Teflon	1	23	2520088	Pin, Trigger	3
11*	2701049	O-ring	1	24	2510158	Pin, Trigger	1
12*	2701045	O-ring	1	25	2660026	Trigger, Lock	1
13	2510156	Plug, Gun	1				
				*	2100249	Repair Kit	

*** Repair Kit 2100249**



Ref 300667 Rev B
10-09

GENERAL PUMP • 1174 Northland Drive • Mendota Heights, MN 55120
Phone: (651)686-2199 • Fax: (800)535-1745 • email: sales@gpcompanies.com • www.generalpump.com

