

AVAILABLE REPAIR KITS

Rotary Head Kit - Major:

P/N 2100373

Includes items 2, 3, 4, 5, 6, 7, 8, 9, 10, 11, 12, 13, 14, 15 and 17

Rotary Head Kit - Minor:

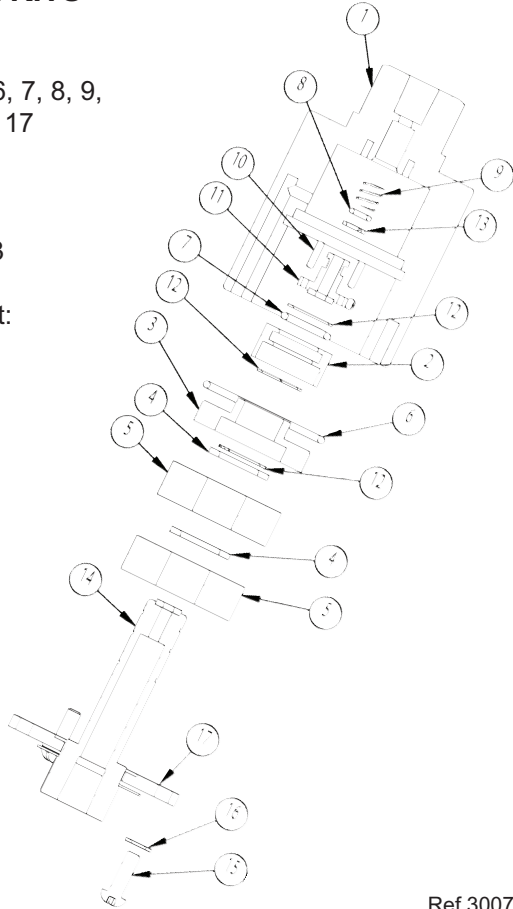
P/N 2100203

Includes items 8, 9, 11, 13

Complete Rotary Head Kit:

P/N 2103221

Includes all items



Ref 300748 Rev. E
07-15

ITEM NO.	PART NO.	DESCRIPTION	QTY.
1	2500011	HOUSING	1
2	2520030	RETAINER, BEARING	1
3	2520028	RETAINER, BEARING	1
4	2520027	SPACER, BEARING	2
5	2640015	BEARING	2
6	2701012	O-RING	1
7	2701011	O-RING	1
8	2701010	O-RING	1
9	2720007	SPRING	1
10	2530008	PIN	2
11	2530007	STEM, SMALL	1
12	2520029	SNAP RING	3
13	2710000	BACK UP RING	1
14	2520113	STEM	1
15	2200092	SCREW, M5 X 16	3
16	2200050	WASHER	3
17	2500012	RETAINER, BEARING	1

THE HAMMERHEAD PROFESSIONAL FLAT SURFACE CLEANER

FROM GENERAL PUMP

- **COMPENSATING GUN FEATURE**
- **FULL 20" CLEANING PATH**
- **HEAVY-DUTY ANODIZED ALUMINUM COMPONENTS**
- **RUGGED ABS COVER**
- **MAINTENANCE-FREE SWIVEL**



DCFSCP20 OPERATOR'S MANUAL



General Pump is a member of the Interpump Group

Ref 300748 Rev.E
07-15



WARNING: Read Before Operating Machine

Always wear protective eyewear
Keep clear of rotating nozzles
Never lock trigger gun open with any device
Drain water in cold weather to avoid freezing
Tampering with any part of this machine will void all warranties



Operating Instructions

1. Connect inlet filter, D40014 to FSC gun inlet.
2. Connect to Pressure Washer.
3. Turn water on and open valve. Open trigger gun for flow of water through nozzles. Nozzles must have flowing spray. If not, remove tips and clean; reassemble, making sure that groove of nozzle is parallel to spray bar. Use thread sealant when installing nozzles.
4. Start Pressure Washer. The Hammerhead is ready for operation.
5. Walk slowly behind the Hammerhead cleaning as you go. If striping occurs, slow down your pace.
6. Periodically check weep hole on bottom of swivel. Water will seep slowly; if water shoots out, stop and replace seals. Swivel assembly can be rebuilt.
7. For maximum effectiveness keep spray tips clean. If the machine vibrates, stop and clean spray tips.

NOTE: Periodically remove the inlet filter, take apart and clean filter screen.

DO NOT ALLOW MACHINE TO REMAIN STATIONARY ON SOFT SURFACES SUCH AS WOOD.

Caution: Striking any raised obstacle during operation will damage machine. If contact does occur and results in vibration when operating machine, STOP and replace spray bar. Continued operation could result in serious injury or damage to machine.

IMPORTANT: TROUBLESHOOTING

If the flat surface cleaner rotating arm is not spinning, tilt the flat surface cleaner up so you can see the underside of the deck. If a nozzle is not spraying it is plugged and needs to be cleaned. The best way to do this is to remove the nozzle (9/16" wrench) and tap it on a hard surface (be careful not to damage the threads). Sometimes it's necessary to unplug the nozzle by running a thin wire through the tip.

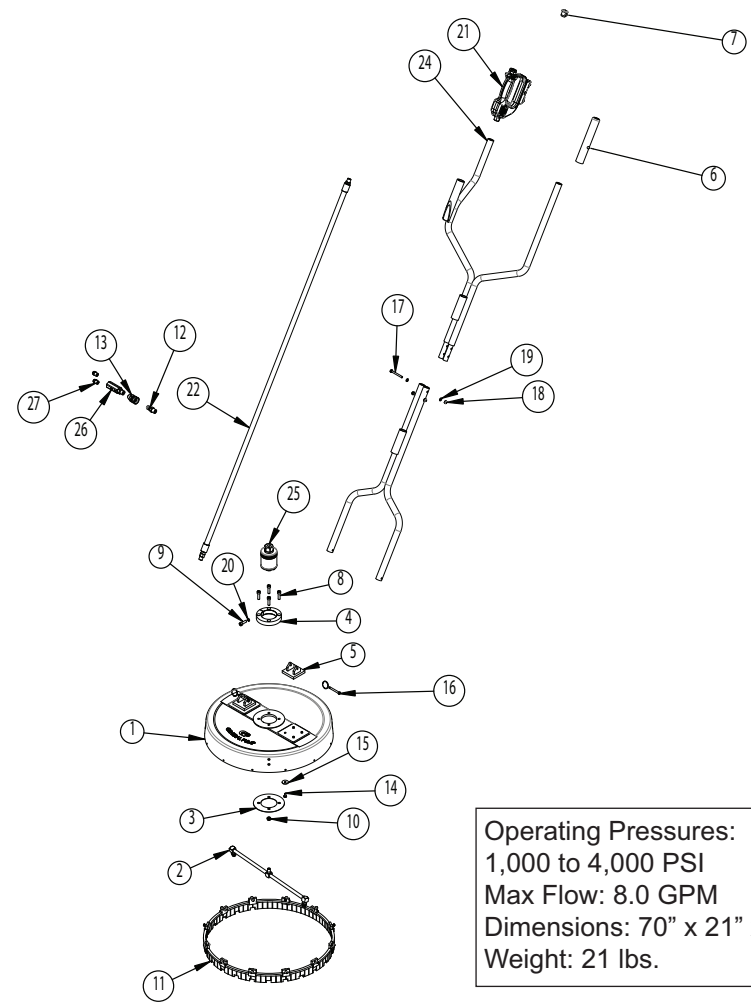
Seal the threads before replacing the nozzle. Teflon tape can often plug a nozzle so be sure tape does not get into the nozzle flow path. A light duty liquid or paste thread sealant is the best way to seal the threads. **SEE PHOTO BELOW.**



General Pump

1174 Northland Drive • Mendota Heights, MN 55120
Phone: 651.686.2199 • Fax: 800.535.1745
www.generalpump.com • sales@gpcompanies.com

Ref 300748 Rev.E
07-15



Operating Pressures:
1,000 to 4,000 PSI
Max Flow: 8.0 GPM
Dimensions: 70" x 21" x 21"
Weight: 21 lbs.

ITEM NO.	PART NO.	DESCRIPTION	QTY.
1	2660045	Deck, GP, 20"	1
2	2530009	Arm, Rotary, Assy., 20"	1
3	2630010	Plate, Retaining	1
4	2540023	Collar, Split	1
5	2540020	Block, Handle	2
6	2660047	Grip, Handle	1
7	2660046	Plug, Handle	1
8	2200055	SHCS, M8 X 1.25 X 30, SST	4
9	2200054	SHCS, M8 x 1.25 x 25, SST	1
10	2200053	NUT, M8X1.25	4
11	2660059	Brush Assy., 20"	1
12	D10009	Plug, 3/9 x 3/8-M	1
13	D10004	Coupler, 3/8 x 3/8-M	1
14	2200047	Bolt, M6	8

ITEM NO.	PART NO.	DESCRIPTION	QTY.
15	2203406	Washer, M6	8
16	2202010	Pin, 55mm, w/Ring, SST	2
17	2200058	HHCS, M6 X 1 X 60	2
18	2200026	NUT, NYLOK, M6	2
19	2200018	Washer, M6	4
20	2203507	Washer, M6, SST, Lock	1
21	DCG4000FSC	Gun, Flat Surface Cleaner	1
22	2702000	Hose, 20"	1
23	2540021	Handle, Lower	1
24	2540037	Handle, Upper	1
25	2103221	Swivel	1
26	D40014	FILTER, IN-LINE, BRASS	1
27	2103016	Nozzle	2

Ref 300748 Rev. E
07-15