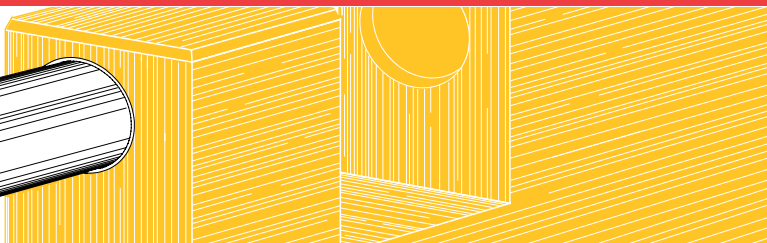
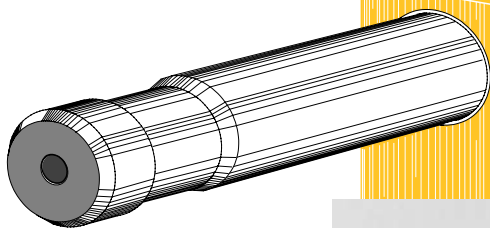


**MAGIKIST**  
**MAGIKIST**



**Exclusive Block Lock design  
for maximum security.**

**High quality  
stainless steel finish.**

**Rugged stainless steel  
construction.**

**All locking hardware  
included.**

**Available in surface mount,  
rear access frame,  
flush mount frame, and  
vault ready styles**

**Accommodates standard  
longdrop style electronic and  
mechanical coin acceptors.**

**Accommodates 8 or 10  
position rotary switches, or 2  
or 3 position toggle switches.**

**Brackets available to mount  
Magiktimer internally.**

**Special assemblies available  
with Mcoin coin acceptor,  
selector switches and  
labels preinstalled.**



**Block Lock**

Coin meter shown with  
optional rotary switch and decal

**STAINLESS STEEL**

**COIN METER**

# MAGIKIST



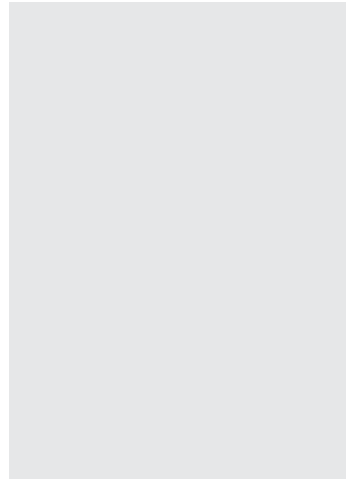
#CBL1-x0NA  
surface mount style

7.75"W x 14.625"H x 7.875"D\*



#CBL1R-x0NA  
rear access frame style

7.75"W x 14.5"H x 7.875"D\*  
flange: 9.875"W x 16.5"W\*



#CBL1F-x0NA  
flush mount style



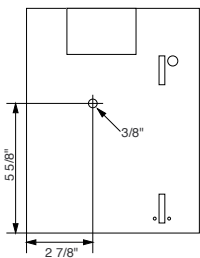
#CBL1P-x0NA  
vault ready style

7.75"W x 10.25"H x 7.875"D\*  
flange: 10"W x 12.25"W\* pipe: 2"

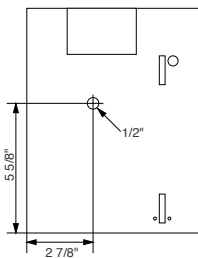
\*All dimensions are subject to change.

## ORDERING GUIDE

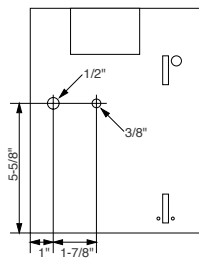
When ordering, please replace the letter "x" in the part# with the letter corresponding to the style of faceplate you desire. For example, to order the CBL1 style coin meter with faceplate C, use the part# CBL1-C0NA.



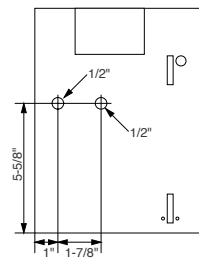
faceplate style A  
accommodates:  
CMX8 (8posn) switch or  
CMX55 (10posn) switch



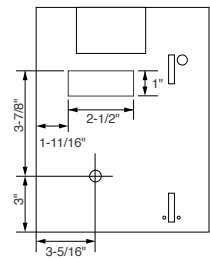
faceplate style B  
accommodates:  
ELCSW10SS (2posn) or  
ELCSW10DD (3posn) switch



faceplate style C  
accommodates:  
same as faceplate A and  
1/2" panel mount light



faceplate style D  
accommodates:  
same as faceplate B and  
1/2" panel mount light



faceplate style E  
accommodates:  
same as faceplate A  
and Dixmor DigitTimer3

## SPECIAL ASSEMBLIES

Following are part numbers for preassembled coin meters that are supplied with *Mcoin* electronic coin acceptor, terminal strip, selector switch, and labels for the selector switch. The table below shows the selector switch that is supplied:

Part#	CMX8 8-posn switch	CMX55 10-posn switch	ELCSW10SS 2-posn switch	ELCSW10DD 3-posn switch
CBL1-A8CP	X			
CBL1-AACP		X		
CBL1-B2CP			X	
CBL1-B3CP				X
CBL1-C8CP	X			
CBL1-CACP		X		
CBL1-D2CP			X	
CBL1-D3CP				X