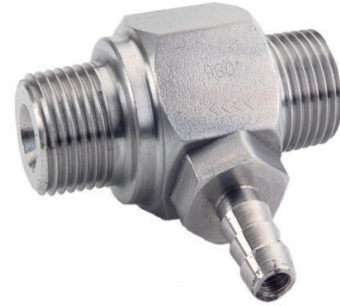


Chemical Injector

FEATURES

Fixed Chemical Injector - Stainless Steel

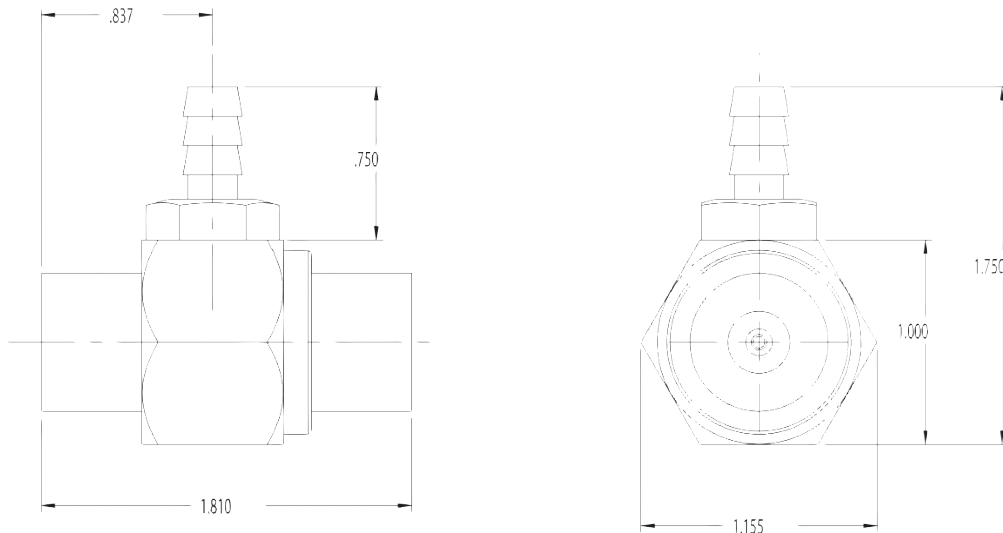
- Designed specifically for carwash applications
- Available fixed barbs
- Made in the USA
- A cost effective solution to your chemical application needs



*Draw rates can be affected by factors such as pressure, flow rate, length of discharge hose, and chemical viscosity.

SPECIFICATIONS					
Model	100336	100835	100334	100333	100339
Style	Fixed				
Operating Pressure	5500 PSI				
Flow Range	1 - 2 GPM	2 - 3 GPM	2 - 4 GPM	3 - 5 GPM	5 - 8 GPM
Maximum Temperature	190° F				
Port Sizes	Inlet: 3/8" NPT-M Discharge: 3/8" NPT-M Chemical Port: 1/4" Hose Barb				
Dimensions	2.2 x 1.15 x 1.9				
Weight	.2 lb.				
Materials	Stainless Steel, Viton				

DIMENSIONS (INCHES)



Chemical Injector

GENERAL PUMP A member of the Interpump Group

INSTALLATION

This product is to be used with clean, fresh water. For different or corrosive liquids, contact GP Technical Service Department. With not clean liquids, appropriate filtration should be installed. Select the injector based on the nominal operating rating: system rated pressure, max flow and max temperature. Install valve with direction arrow pointing downstream. For proper operation a control device such as a dual lance wand, quick couple nozzles, or an adjustable nozzle holder must be used to lower the system pressure at the nozzle.



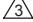
Under no circumstances should the pressure of the system exceed the maximum rated pressure of any component.

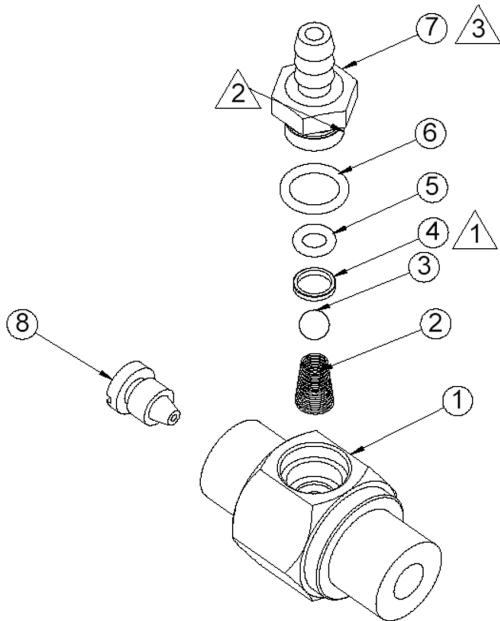
TROUBLESHOOTING

Problem	Cause	Solution
Chemical Injector will not draw chemical	Incorrect nozzle	Check and change nozzle
	System is not in low pressure mode	Change or adjust nozzle to put system in low pressure mode
	Discharge hose is too long	Reduce length of discharge hose or change injector*
Rate of draw seems too slow	Chemical line is clogged	Clear chemical line of obstruction
	Discharge hose is too long	Reduce length of discharge hose or change injector*
	Air leak in chemical line Chemical is too viscous	Locate and repair leak Reduce chemical with water to decrease its viscosity
Chemical injector is leaking from hose barb	Obstruction in hose barb checkvalve	Disassemble and remove obstruction
	Damaged o-ring in checkvalve	Remove and replace o-ring
Excessive pressure load on pump, motor or engine	Clogged injector	Clear injector orifice of obstruction
	Improperly sized injector orifice	Change orifice*

*Contact GP Technical Service for Assistance

PARTS LIST

-  Press item 4 to a depth of .290 ± .003
-  Apply Loc-tite® 242 to threads for re-assembly
-  Torque to 40 in/lbs for re-assembly



Item	Part Number	Description	Qty
Kit *	100464	Repair Kit	1
1	520120	Housing, Injector, SS (100336)	1
	520119	Housing, Injector, SS (100835/334/333)	1
	520121	Housing, Injector, SS (100339)	1
2 *†	720040	Spring	1
3 *†	520008	Ball, Injector, 316 SS	1
4 *†	660110	Retaining Ring, Inj. O-ring, Kynar	1
5 *†	701032	O-ring, 50 duro, Viton	1
6 *†	701050	O-ring, 70 duro, Viton	1
7 *†	520122	Hose Barb, SS	1
8	520072	Nozzle, Injector, .057 (100336)	1
	520116	Nozzle, Injector, .070 (100835)	
	520066	Nozzle, Injector, .083 (100334)	
	520065	Nozzle, Injector, .086 (100333)	
	520073	Nozzle, Injector, .098 (100339)	