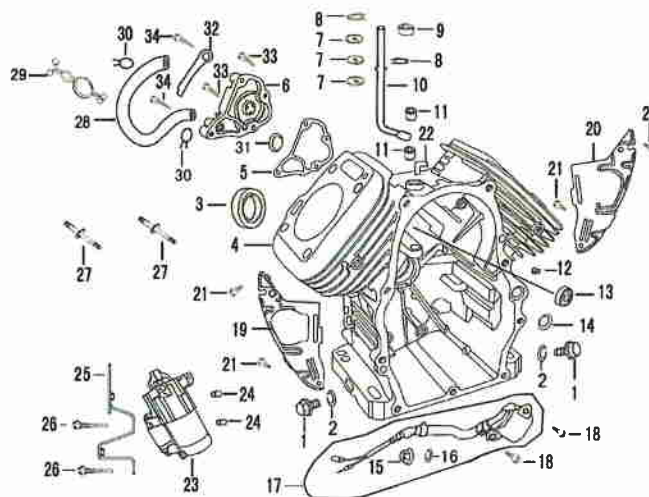
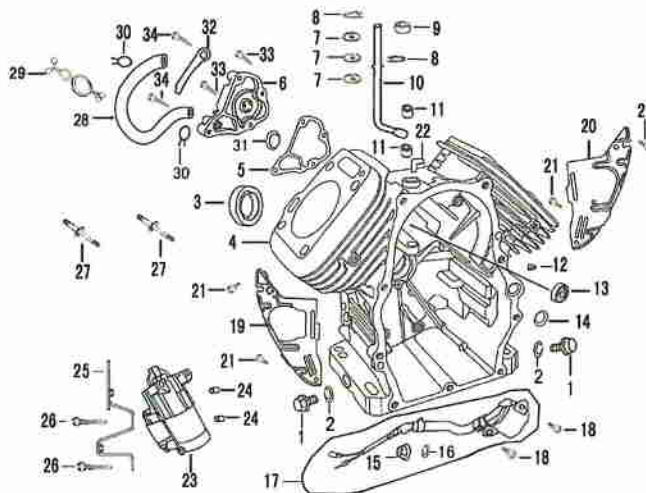


E-1 曲轴箱总成 CRANKCASE ASSY



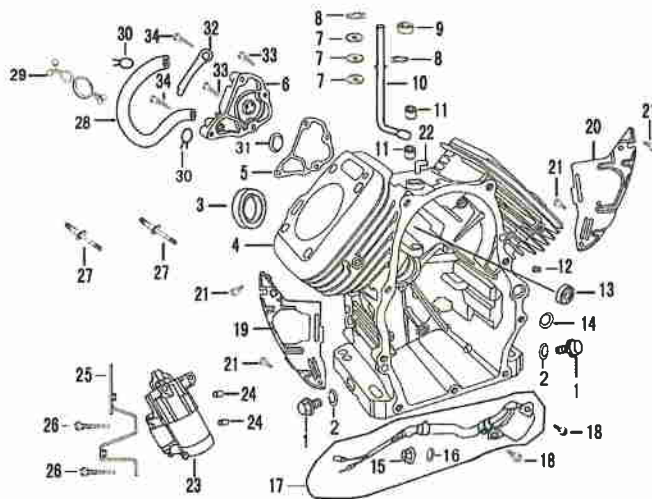
序号 S/N	零部件代号 Part No.	零部件名称	Description	数量 Quantity	备注 Remark
1	11115	放油螺塞	Drain plug	2	
2	11116	放油螺塞垫圈	Wahser, drain plug	2	
3	11120	曲轴油封 38×58×8	Oil seal, crankshaft38×58×8	1	
4	11110	曲轴箱组合	Crankcase	1	
5	12217	迷宫盖板密封垫	Gasket, labyrinth gland	1	
6	12213	迷宫盖板	Gland, labyrinth	1	
7	26113	调速摆杆垫片	Washer	3	
8	26112/168F	调速摆杆锁夹	Split pin	2	
9	11130	调速摆杆油封 8×14×5	Oil seal, regulating sway bar	1	
10	26111	调速摆杆	Regulating sway bar	1	
11	GB/T290	滚针轴承φ8×10×12	Roller bearing	2	
12	13142	油道堵塞	Plug, oil passage	1	
13	GB/T276	轴承 6003	Bearing 6003	1	
14	11119	O型密封圈 φ13×2.5	O-ring	1	

E-1 曲轴箱总成 CRANKCASE ASSY



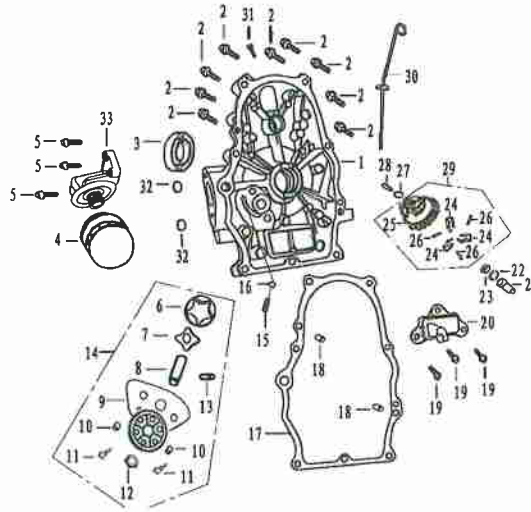
序号 S/N	零部件代号 Part No.	零部件名称	Description	数量 Quantity	备注 Remark
15	GB/T6177.1	螺母 M10	Nut M10	1	
16	27411	O 型密封圈 13×1.4	O-ring	1	
17	27400/173F	机油传感器	Oil sensor	1	
18	GB/T16674	螺栓 M6×16	Bolt M6×16	2	
19	19311	曲轴箱侧板 I	Slide plate, crankcase I	1	
20	19315	曲轴箱侧板 II	Slide plate, crankcase II	1	
21	GB/T16674	螺栓 M6×12	Bolt M6×12	4	
22	20150	废气嘴组合	Nipple, exhaust	1	
23	24100	起动电机总成	Motor, starting	1	
24	24143	起动电机定位销 $\phi 10 \times 12$	Dowel pin, Motor, starting	2	
25	24141	起动电机连接架组合	Connecting member set, starting motor	1	
26	24144	起动电机螺栓 M8×110	Bolt M8×110	2	
27	19213	点火线圈双头螺栓	Stud	2	
28	19143	废气管	Pipe, exhaust	1	

E-1 曲轴箱总成 CRANKCASE ASSY



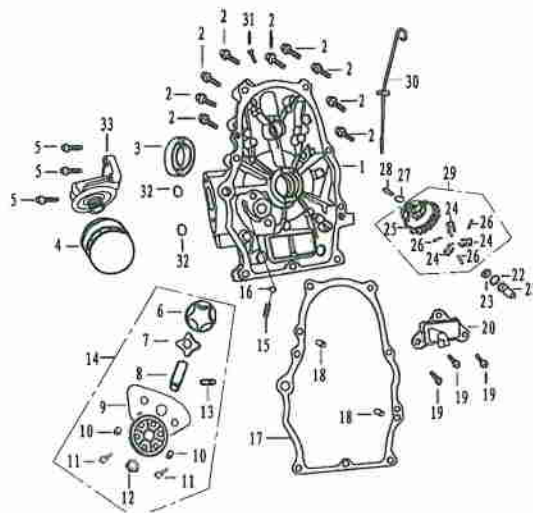
序号 S/N	零部件代号 Part No.	零部件名称	Description	数量 Quantity	备注 Remark
29	19144	废气管管夹组合	Clamp set, exhaust pipe	1	
30	19144	废气管管夹	Clamp, exhaust pipe	2	
31	15253	阀片	Valve piece	1	
32	24145	压线板	Line bar board	1	
33	GB/T16674	螺栓 M6×16	Bolt M6×16	2	
34	GB/T16674	螺栓 M6×32	Bolt M6×32	2	

E-2 曲轴箱盖组件 CRANKCASE COVER ASSY



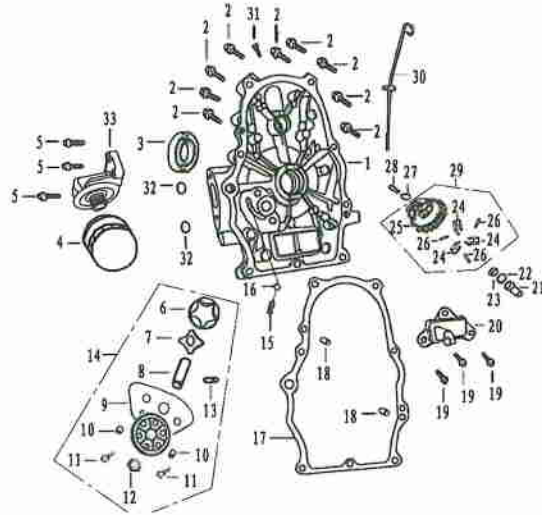
序号 S/N	零部件代号 Part No.	零部件名称	Description	数量 Quantity	备注 Remark
1	11211	曲轴箱盖	Crankcase cover	1	
2	12118/1P64FV	螺栓 M8×50	Bolt M8×50	9	
3	11120	曲轴油封 38×58×8	Oil seal, crankshaft	1	
4	15200	机油滤清器总成	Oil filter Assy	1	
5	GB/T5789	螺栓 M6×28	Bolt M6×28	3	
6	15114	机油泵外转子	Rotor, outer, oil pump	1	
7	15113	机油泵内转子	Rotor, inner, oil pump	1	
8	15115	机油泵轴	Shaft, oil pump	1	
9	15112	机油泵盖	Cover, oil pump	1	
10	15117	机油泵定位销	Set pin, oil pump	2	
11	GB/T70.1	螺钉 M6×16	Screw M6×16	2	
12	15122	从动齿轮嵌件	Inserter, driven gear	1	
13	15111	机油泵轴内转子传动销	Oil pump Transmission sell	1	
14	15100	机油泵总成	Oil pump Assy	1	

E-2 曲轴箱盖组件 CRANKCASE COVER ASSY



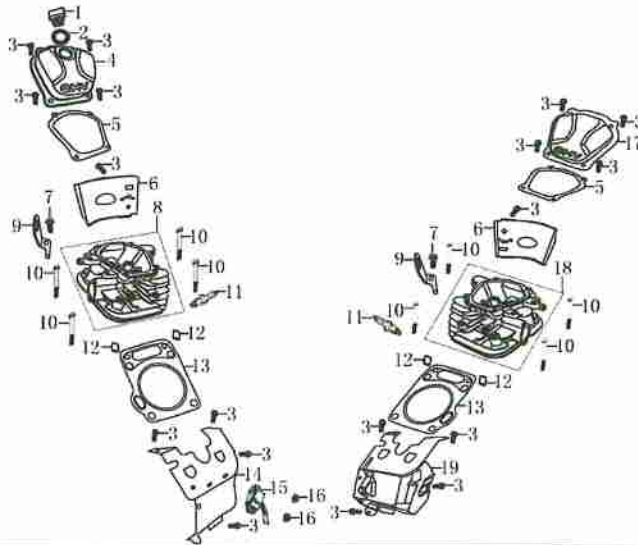
序号 S/N	零部件代号 Part No.	零部件名称	Description	数量 Quantity	备注 Remark
15	15118	弹簧	Spring	1	
16	GB/T308	(泻油) 钢球 S φ9.5	Ball S φ9.5	1	
17	11114	曲轴箱垫片	Gasket, crankcase	1	
18	11113	定位销	Set pin	2	
19	GB/T5789	螺栓 M6×18	Bolt M6×16	3	
20	15250	机油滤网组合	Gauze set	1	
21	25112	调速滑套	Sliding sleeve	1	
22	25113/168F	调速滑套垫片	Washer	1	
23	25117/173F	调速轴卡圈	Snap ring	1	
24	25114	调速飞块	Flying block	3	
25	25111	调速从动齿轮	Driven gear, regulator	1	
26	25116	飞块销	Pin	3	
27	25118/173F	调速从动齿轮垫片	Washer, driven gear	1	
28	25115	调速轴	Regulating shaft	1	

E-2 曲轴箱盖组件 CRANKCASE COVER ASSY



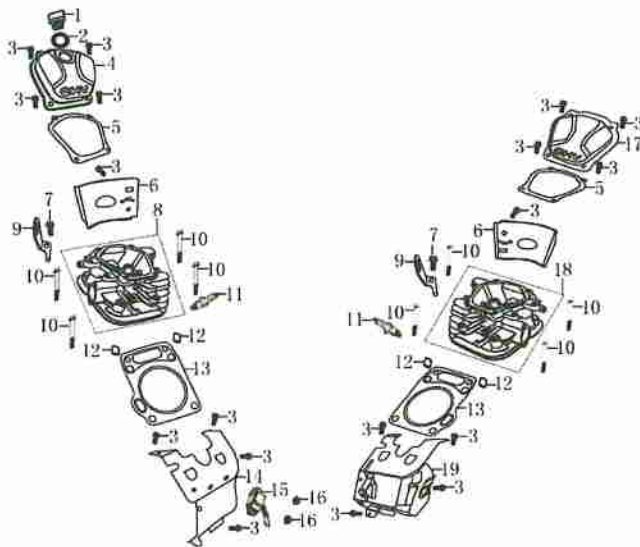
序号 S/N	零部件代号 Part No.	零部件名称	Description	数量 Quantity	备注 Remark
29	25110	调速从动齿轮组件	Driven gear, regulator assy	1	
30	15510	机油尺组件	Dipstick with seal	1	
31	11115	油孔螺塞	Plug	1	
32	15248	O型密封圈 $\phi 13 \times 2$	O-ring $\phi 13 \times 2$	2	
33	15211	机油滤清器座	Sump leaching of seat	1	

E-3 气缸头 气缸头盖总成 CYLINDER HEAD & CYLINDER HEAD COVER ASSY



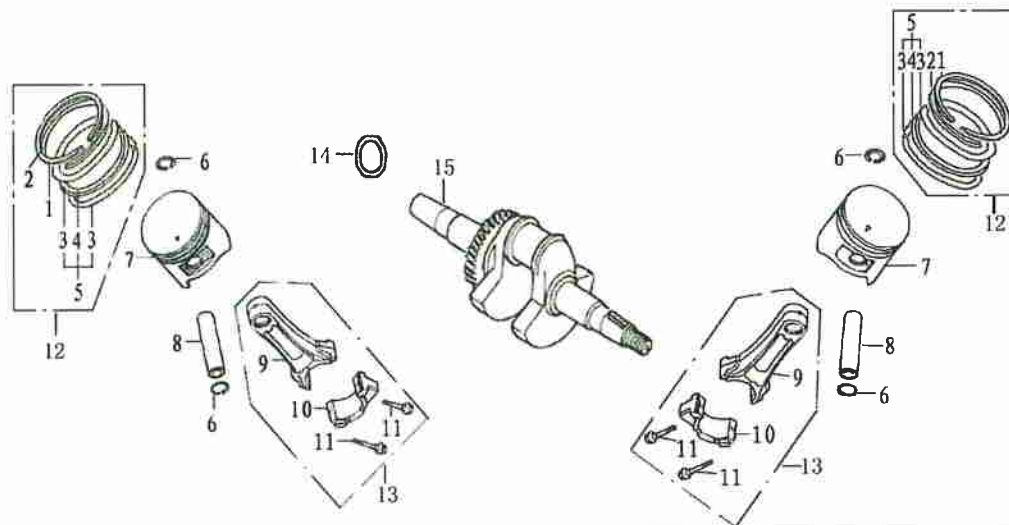
序号 S/N	零部件代号 Part No.	零部件名称	Description	数量 Quantity	备注 Remark
1	15610	机油塞	Oil plug	1	
2	15612	机油塞密封圈	Seal	1	
3	GB/T16674	螺栓 M6×12	Bolt M6×12	18	
4	12312	气缸头盖 I	Cylinder head cover Assy I	1	
5	12212	气缸头盖密封圈	Gasket, cylinder head cover	2	
6	19114	上导风罩(一)	wind cover(一)	2	
7	GB/T5789	螺栓 M8×16	Bolt M6×12	2	
8	12131	气缸头组合 I	Cylinder head Assy I	1	
9	24146	吊环支架	Bolt M8×16	2	
10	12118	气缸头螺栓	Bolt M10×80	8	
11	27100/173F	火花塞 F6TC	Spark plug F6TC	2	
12	12117	气缸头定位销 φ12×16	Set pin	4	
13	12120	气缸头密封垫	Gasket, cylinder head	2	
14	19121	下导风罩 I	Lead wind cover I	1	

E-3 气缸头 气缸头盖总成 CYLINDER HEAD & CYLINDER HEAD COVER ASSY



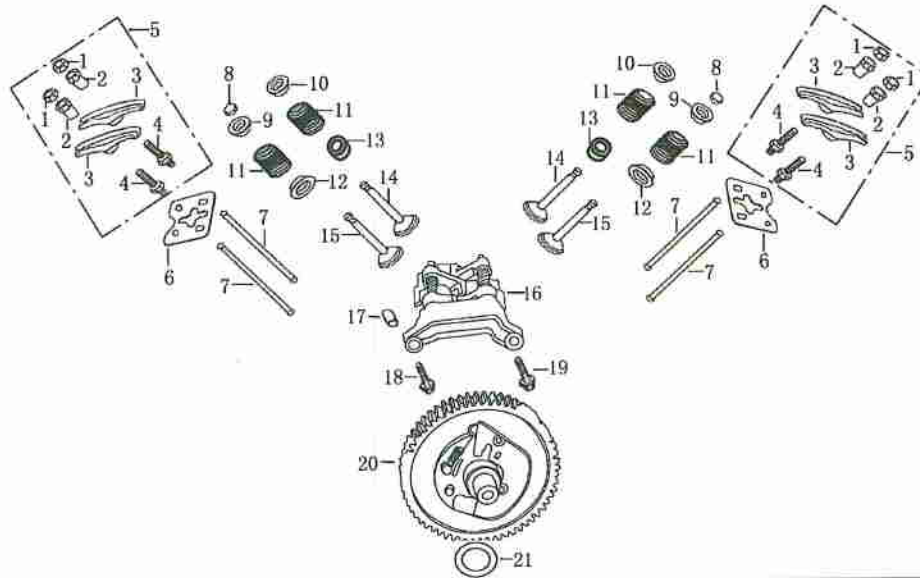
序号 S/N	零部件代号 Part No.	零部件名称	Description	数量 Quantity	备注 Remark
15	27500/173F	单向导通器	Diode	1	
16	GB/T6177.1	螺母 M5	Nut M5	2	
17	12142	气缸头盖 II	Cylinder head cover AssyII	1	
18	12141	气缸头组合 II	Cylinder head AssyII	1	
19	19131	下导风罩 II	Lead wind coverII	1	

E-4 曲轴 活塞连杆总成 CRANKSHAFT, PISTON, CONNECTING



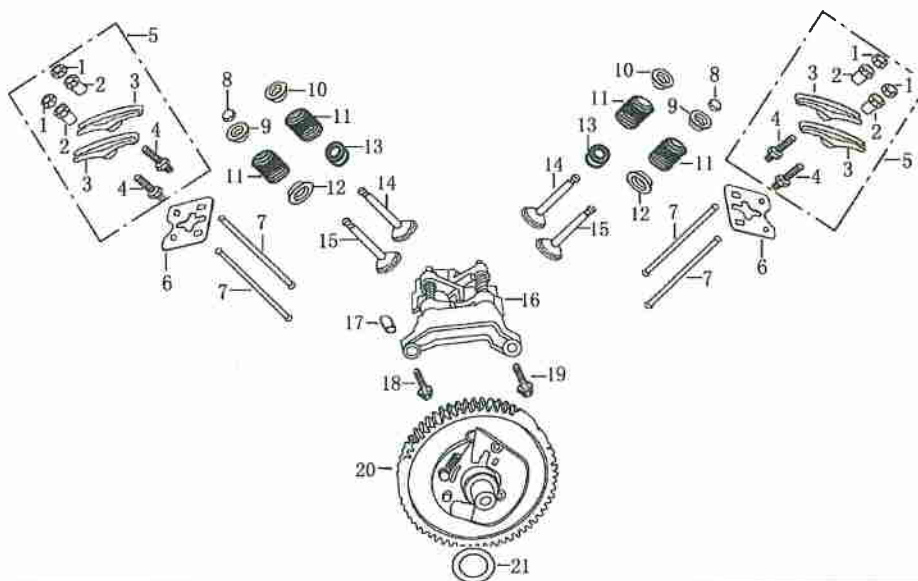
序号 S/N	零部件代号 Part No.	零部件名称	Description	数量 Quantity	备注 Remark
1	13411	活塞环 I	Piston ring I	2	
2	13412	活塞环 II	Piston ring II	2	
3	13422	侧环	Side rail	4	
4	13421	衬簧	Expander	2	
5	13420	油环组件	Scraper ring set	2	
6	13313/173F	活塞销挡圈	Piston pin circlip	4	
7	13311	活塞	Piston	2	
8	13312	活塞销	Piston pin	2	
9	13121	连杆	Connecting rod	2	
10	13122	连杆盖	Connecting rod cover	2	
11	13123/173F	连杆螺栓	Bolt	4	
12	13400	活塞环组合	Piston ring set	2	
13	13120	连杆组件	Connecting rod assy	2	
14	13115	曲轴调整垫片	Adjusting washer	1	
15	13110	曲轴	Crankshaft	1	

E-5 凸轮轴装配组合 气门摇臂组合 COMBINATION OF CAM SHAFT & VALVE ROCKER



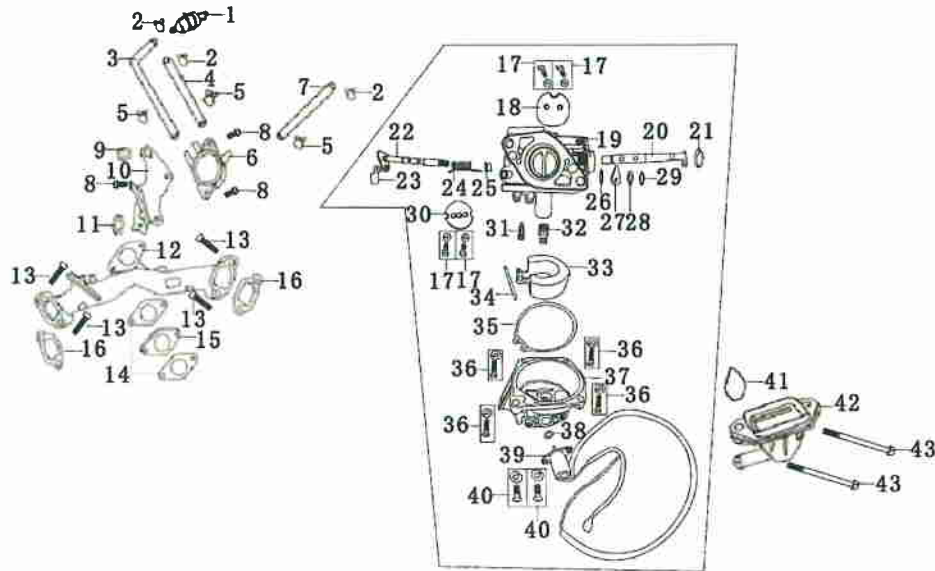
序号 S/N	零部件代号 Part No.	零部件名称	Description	数量 Quantity	备注 Remark
1	14314/173F	气门间隙调节螺母	Lock nut	4	
2	14312/173F	摇臂轴座销	Sleeve	4	
3	14311/173F	气门摇臂	Valve rocker	4	
4	14313/173F	气门间隙调节螺栓	Adjusting bolt for valve gap	4	
5	14310 /173F	气门摇臂装配组合	Valve rocker assy	2	
6	14221/173F	推杆导架	Pusher guide	2	
7	14220	推杆组件	Pusher	4	
8	14416 /173F	排气门顶帽	Cap	2	
9	14413 /173F	进气门弹簧座	Spring seat, intake valve	2	
10	14415/173F	排气门弹簧座	Spring seat, exhaust valve	2	
11	14100	气门弹簧	Valve spring	4	
12	14417/173F	排气门弹簧下座	Spring retainer, exhaust valve	2	
13	14420/173F	挡油罩	Seal	2	
14	14411/182F	进气门	Intake valve	2	

E-5 凸轮轴装配组合 气门摇臂组合 COMBINATION OF CAM SHAFT & VALVE ROCKER



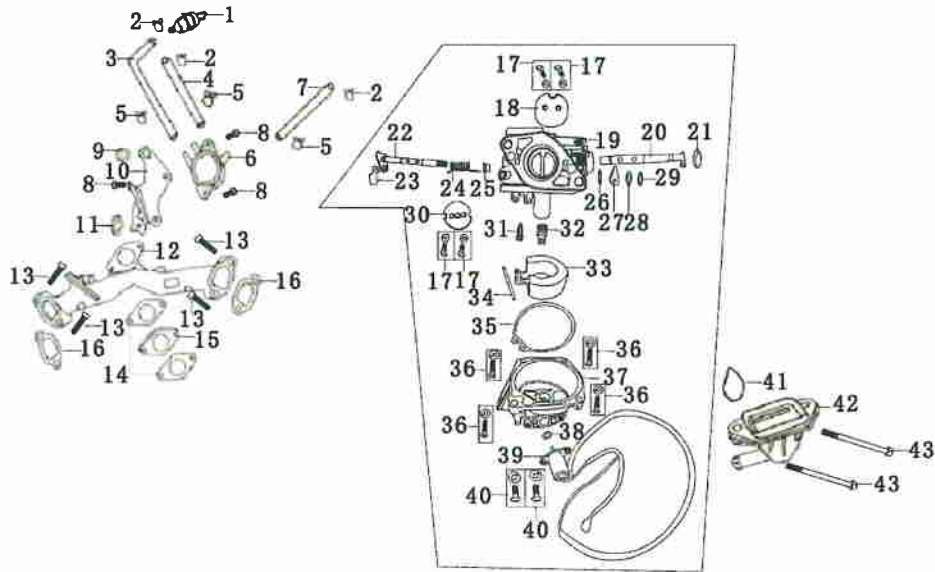
序号 S/N	零部件代号 Part No.	零部件名称	Description	数量 Quantity	备注 Remark
15	14412/182F	排气门	Exhaust valve	2	
16	14500	下摇臂装配组合	Rocker arm Assy,lower	1	
17	11113/173F	定位销 $\phi 8 \times 12$	Set pin $\phi 8 \times 12$	1	
18	GB/T16674.1	螺栓 M6 \times 22	Bolt M6 \times 22	1	
19	GB/T16674.1	螺栓 M6 \times 16	Bolt M6 \times 16	1	
20	14100	凸轮轴装配组合	Camshaft assy	1	
21	14114	凸轮轴调整垫片	Adjusting washer	1	

E-6 化油器总成 进气管总成 CARBURETOR ASSY & INLET PIPE ASSY



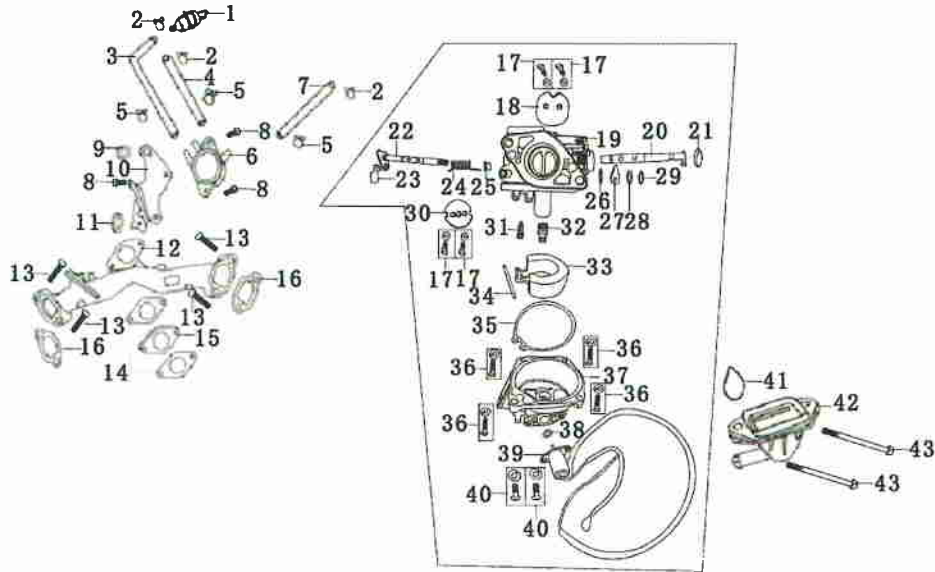
序号 S/N	零部件代号 Part No.	零部件名称	Description	数量 Quantity	备注 Remark
1	16660	燃油过滤器组件	filter subassembly for fuel	1	
2	16622	油管夹 I	Clamp, pipe I	3	
3	16714	汽油泵进油管	Inlet pipe, fuel pump	1	
4	16716	汽油泵负压管	Vacuum pipe, fuel pump	1	
5	16937	油管夹 II	Clamp, pipe II	3	
6	16700	汽油泵总成	Fuel pump Assy	1	
7	16715	汽油泵出油管	Outlet pipe, fuel pump	1	
8	GB/T16674.1	螺栓 M6×12	Screw M6×12	3	
9	16712	垫圈 I	Washer I	1	
10	16711	汽油泵支撑板	Outlet pipe, facing bar	1	
11	16717	垫圈 II	Washer II	2	
12	17211	进气管	Inlet pipe	1	
13	GB/T70.1	螺栓 M8×50	Screw M8×50	4	

E-6 化油器总成 进气管总成 CARBURETOR ASSY & INLET PIPE ASSY



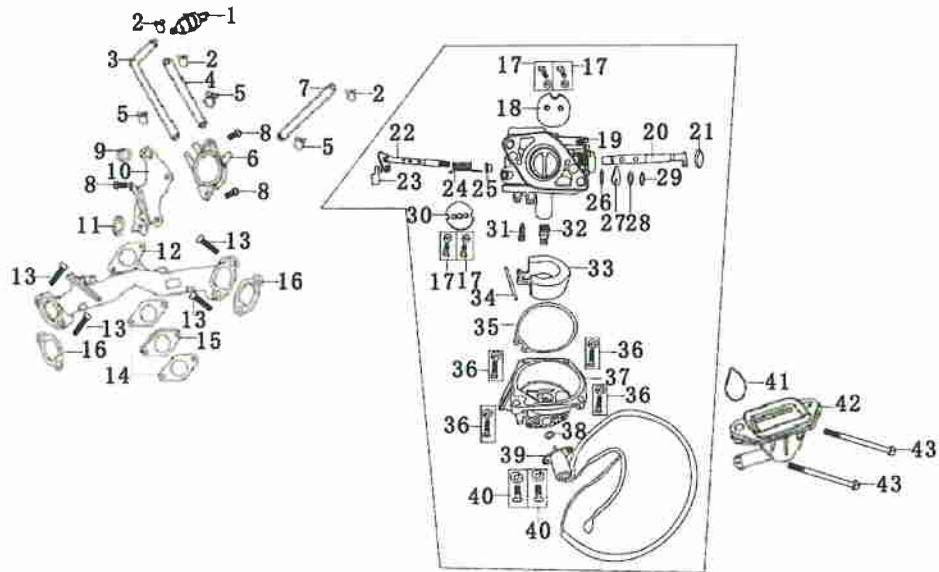
序号 S/N	零部件代号 Part No.	零部件名称	Description	数量 Quantity	备注 Remark
14	16113	化油器垫片	Carburetor gasket	2	
15	16120	化油器接块	Connecting block	1	
16	17219	进气口垫片	Inlet gasket	2	
17	GB818-85	螺钉 M3×4.5	Scew M3×4.5	2	
18	16321	阻风门片	Choke patch	1	
19	16111	化油器本体	Noumenon, carburetor	1	
20	16322	阻风门轴	Choke shaft	1	
21	16325	阻风门防尘盖	Dusttop	1	
22	16262	节气门轴	Throttle shaft	1	
23	16269	节气门拉杆扣环	Sloar term ouch	1	
24	16267	节气门回位扭簧	Sloar term retotion	1	
25	23243	弹簧座	Spring	1	
26	GB/T848	垫圈	Washer	1	

E-6 化油器总成 进气管总成 CARBURETOR ASSY & INLET PIPE ASSY



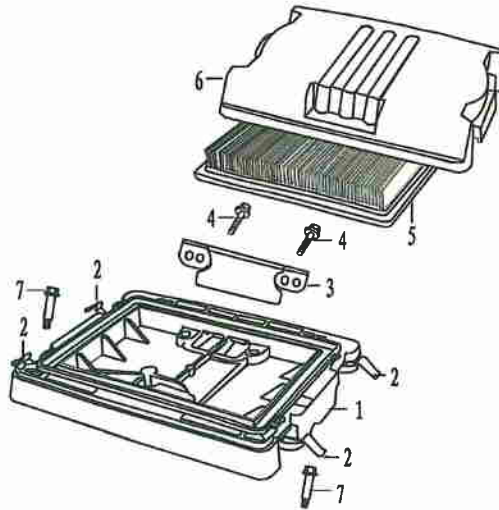
序号 S/N	零部件代号 Part No.	零部件名称	Description	数量 Quantity	备注 Remark
27	16328	节气门开度定位摇臂	Orientation rocker	1	
28	GBT93	弹垫 $\phi 5$	Spring tray	1	
29	GB/T6173	螺母 M5 \times 4	Nut M5 \times 4	1	
30	16261	节气门片	Throttle patch	1	
31	14128	针阀总成	Needle valve, float	1	
32	16241	主量孔	Orifice, Main jet	1	
33	16221	化油器浮子	Floater	1	
34	16222	浮子销	Floater pin	1	
35	16216	浮子室密封圈	Gasket, float chamber	2	
36	GB818-85	螺钉 M4 \times 14	Screw M4 \times 14	4	
37	16211	浮子室	Float chamber	1	
38	16373	电磁阀密封圈	Electromagic chamber	1	

E-6 化油器总成 进气管总成 CARBURETOR ASSY & INLET PIPE ASSY



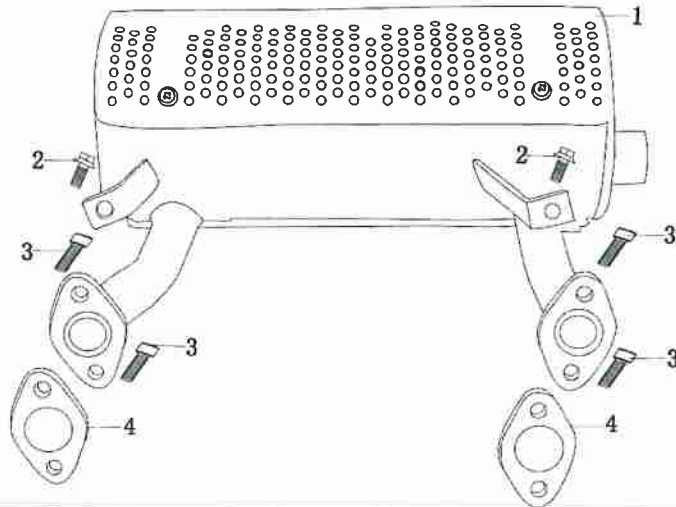
序号 S/N	零部件代号 Part No.	零部件名称	Description	数量 Quantity	备注 Remark
39	16370	电磁阀	Electromagic	1	
40	GB818-85	螺钉 M5×12	Screw M5×12	2	
41	17212	进气管密封圈	gasket, inlet pipe	1	
42	17230	空滤器安装支架组合	Bracket, air cleaner	1	
43	GB/T16674	化油器螺栓 M6×120	Bolt M6×120	2	

E-7 空气滤清器总成 AIR CLEANER ASSY



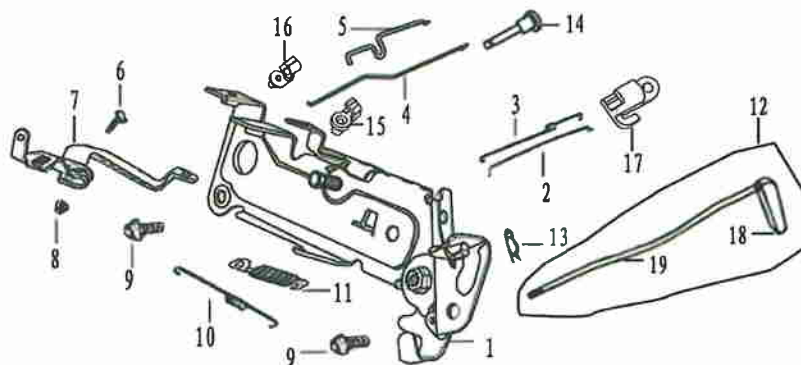
序号 S/N	零部件代号 Part No	零部件名称	Description	数量 Quantity	备注 Remark
1	17131	空滤器座	Air cleaner housing	1	
2	17150	空滤器卡箍	Clamp, air cleaner	4	
3	17115	空滤器通风盖板	Air-duct cover	1	
4	GB/T16674.1	螺栓 M6×32	Bolt M6×32	2	
5	17120	滤芯组件	Filter element	1	
6	17112	空滤器盖	Air cleaner cover	1	
7	17117	空滤器螺栓	Bolt, air cleaner	2	

E-8 消声器组件 MUFFLER (选配件)



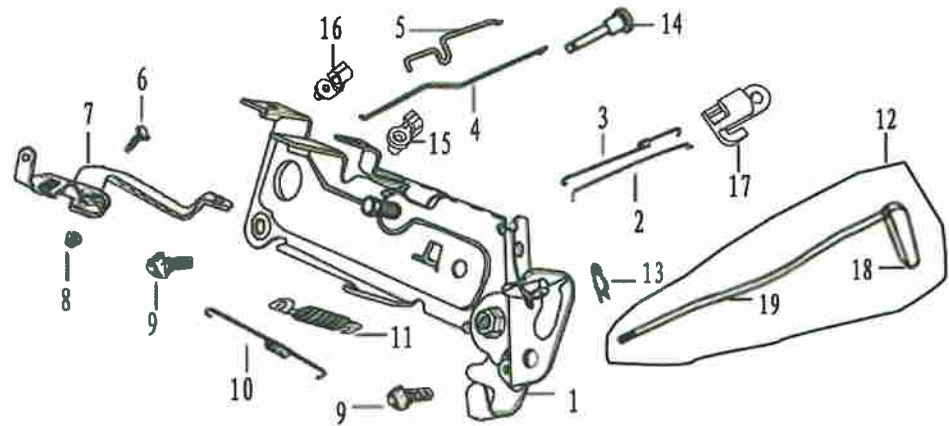
序号 S/N	零部件代号 Part No	零部件名称	Description	数量 Quantity	备注 Remark
1	18000	消声器总成	Muffler assy	1	
2	GB/T5789	螺栓 M8×16	Screw M8×16	2	
3	GB/T70.1	螺栓 M8×25	Screw M8×25	4	
4	18215	排气口垫片	Exhaust pipe gasket	2	

E-9 调速控制系统 REGULATING CONTROL SYSTEM



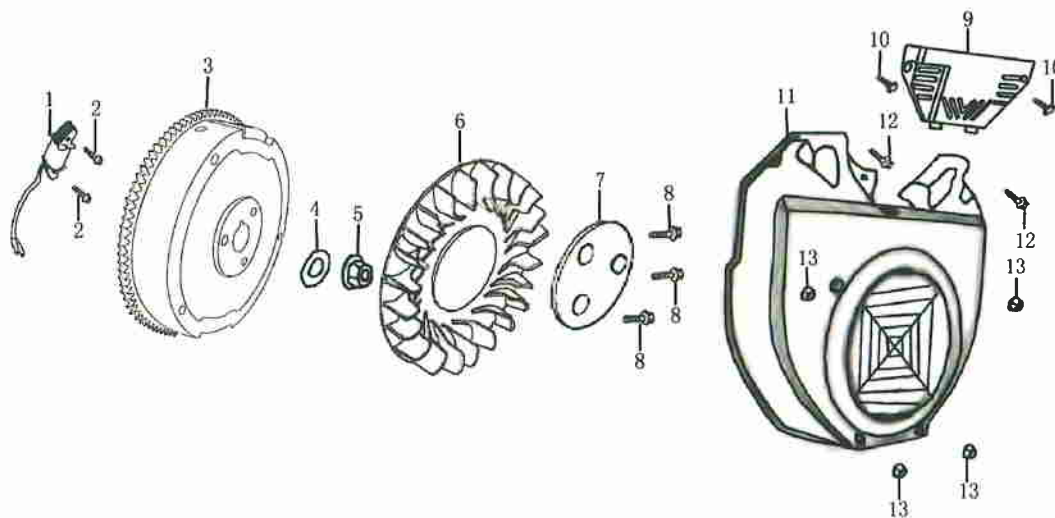
序号 S/N	零部件代号 Part No	零部件名称	Description	数量 Quantity	备注 Remark
1	26210	调速支撑板组件	Regulating board	1	
2	26115	调速拉杆	Pulling rod	1	
3	26117	复位弹簧	Back spring	1	
4	26121	阻风门拉杆 II	Choke link II	1	
5	26119	阻风门拉杆 I	Choke link I	1	
6	26116	调速臂紧固螺栓	Lock bolt	1	
7	26114	调速臂	Regulating arm	1	
8	GB/T6177.1	螺母 M6	Nut M6	1	
9	GB/T16674.1	螺栓 M8×16	Bolt M8×16	2	
10	26215	调速弹簧	Regulating spring	1	
11	26118	微调速弹簧	Fine regulating spring	1	
12	26430	手柄组合	Hand grip assy	1	
13	26115/168F	调速摆杆锁夹	Clamp, regulating sway bar	1	
14	16114	阻风门开关	Switch, choke	1	

E-9 调速控制系统 REGULATING CONTROL SYSTEM



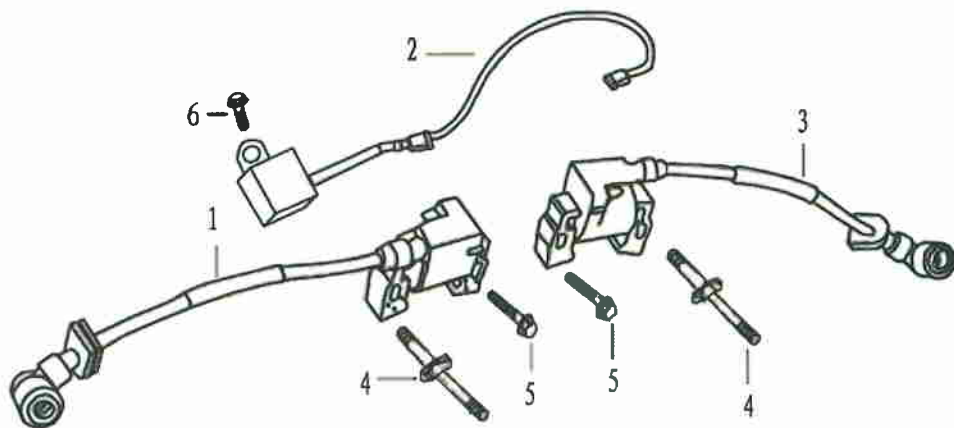
序号 S/N	零部件代号 Part No	零部件名称	Description	数量 Quantity	备注 Remark
15	26122	阻风门拉杆锁夹 II	Clamp, Choke link II	1	
16	26112	阻风门拉杆锁夹 I	Clamp, Choke link I	1	
17	26112	调速拉杆锁夹	Clamp, pulling rod	1	
18	26261	手柄	Hand grip	1	
19	26262	支架	Support frame	1	

E-10 飞轮部件 FLYWHEEL



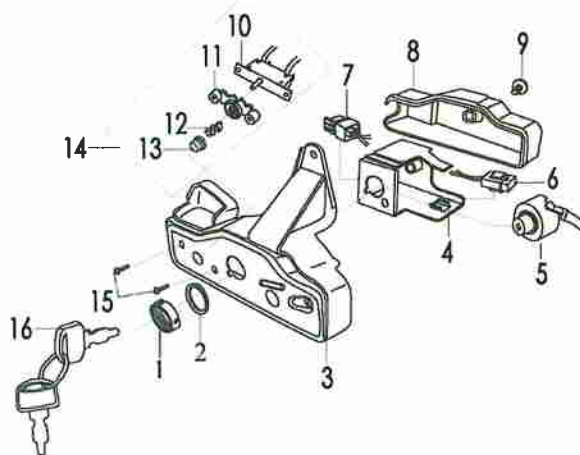
序号 S/N	零部件代号 Part No	零部件名称	Description	数量 Quantity	备注 Remark
1	24130	充电线圈组件	Charge up electrification assy	1	
2	GB/T16674.1	螺栓 M6×32	Bolt M6×32	2	
3	23300	飞轮组件	Flywheel	1	
4	23319	飞轮垫片	Washer, flywheel	1	
5	23317	飞轮螺母 M20×2	Nut M20×2	1	
6	19111	飞轮风扇	Flywheel fan	1	
7	19151	飞轮风扇压板	Flywheel fan press board	1	
8	GB/T5789	螺栓 M8×16	Bolt M8×16	3	
9	19221	挡风板	Wind plate	1	
10	GB/T5282	自攻螺钉 st4.2×19	Screw st4.2×19	2	
11	19210	风扇罩组件	Fan hood assy	1	
12	GB/T16674.1	螺栓 M6×25	Bolt M6×25	2	
13	GB/T6177.1	螺母 M6	Nut M6	4	

E-11 点火线圈组件 IGNITION COIL



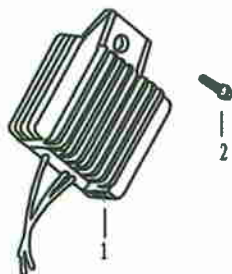
序号 S/N	零部件代号 Part No	零部件名称	Description	数量 Quantity	备注 Remark
1	27200	点火线圈组件 I	Ignition coil assy I	1	
2	27330	熄火单向器	Flameout one-way of organ	1	
3	27600	点火线圈组件 II	Ignition coil assy II	1	
4	19213	点火线圈双头螺栓	Stud	2	
5	GB/T16674.1	螺栓 M6×32	Bolt M6×32	2	
6	GB/T16674.1	螺栓 M6×12	Bolt M6×12	1	

E-12 起动控制盒总成 (选用件)



序号 S/N	零部件代号 Part No	零部件名称	Description	数量 Quantity	备注 Remark
1	24217	锁紧圈	Clamp ring	1	
2	35413	钥匙开关垫圈	Gasket	1	
3	24211	控制盒前盖	Control front cover	1	
4	24212	控制盒内支撑架	Fixed mount	1	
5	24215	启动钥匙开关	Key switch	1	
6	31248	保险	Safety	1	
7	31280	二极管	Diode	1	
8	24213	控制盒后盖	Control rear cover	1	
9	24214	后盖连接螺栓	Attachment bolt	1	
10	24220	线路保护器	Circuit protector	1	
11	28412	线路保护器支架	Fixed mount	1	
12	28413	弹簧	Spring	1	
13	28414	线路保护器帽	Circuit protector cap	1	
14	51125	线路保护器组合	Circuit protector assembled	1	
15	GB/T 818	十字半圆头螺钉 M3×12	Bolt M3×12	2	
16	31258	钥匙	Key	1	

E-13 整流器（未购买起动控制盒时选用）

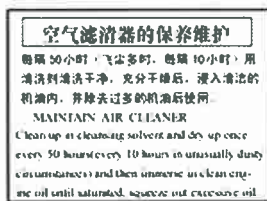


序号 S/N	零部件代号 Part No	零部件名称	Description	数量 Quantity	备注 Remark
1	35318	整流器	Rectifier	1	
2	GB/T 16674.1	螺栓 M6×12	Bolt M6×12	1	

E-14 贴花 EMBLEM



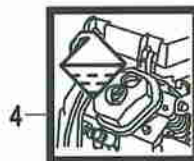
1



2



3



4



7

6



5



序号 Ref.No.	零部件代号 Part No	零部件名称	Description	数量 Quantity	备注 Remark
1	91121	型号贴花	Model label	1	
2	91113/168F	空滤器保养贴花	Emblem, maintenance of air cleaner	1	
3	91114	龟兔贴花	Emblem, tortoise and rabbit	1	
4	91112	加注机油贴花	Emblem, adding oil	1	
5	91155/168F	注意一氧化碳贴花	Emblem, Notice: CO	1	
6	91126/168F	注意阅读说明书贴花	Emblem, Note: read the instructions	1	
7	91148/168F	注意使用前加机油贴花	Emblem, Note: add oil before using	1	