

I Love
Dance Shoes

www.ilovedanceshoes.com
1-866-520-6218
info@ilovedanceshoes.com
f/ilovedanceshoes

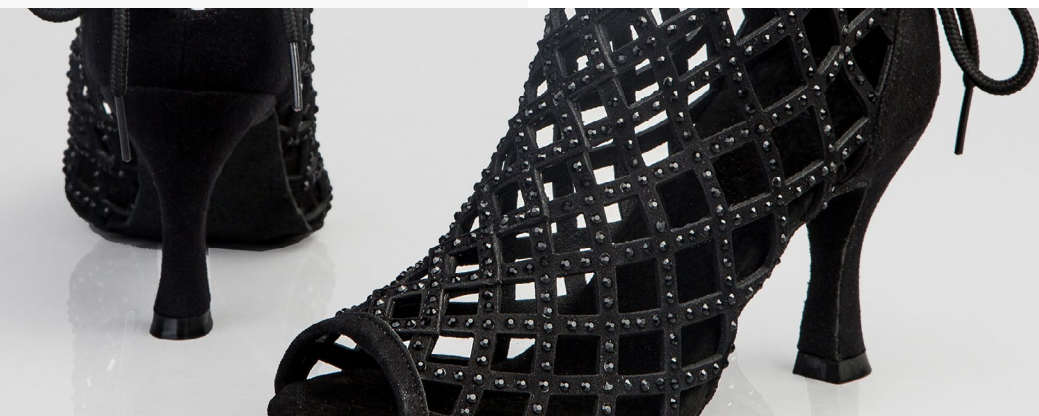
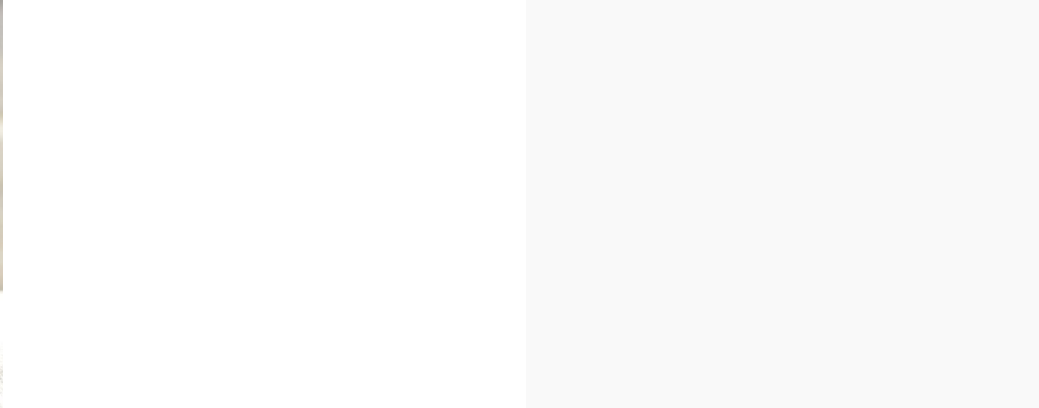
I Love
Dance Shoes

CATALOGUE 2019

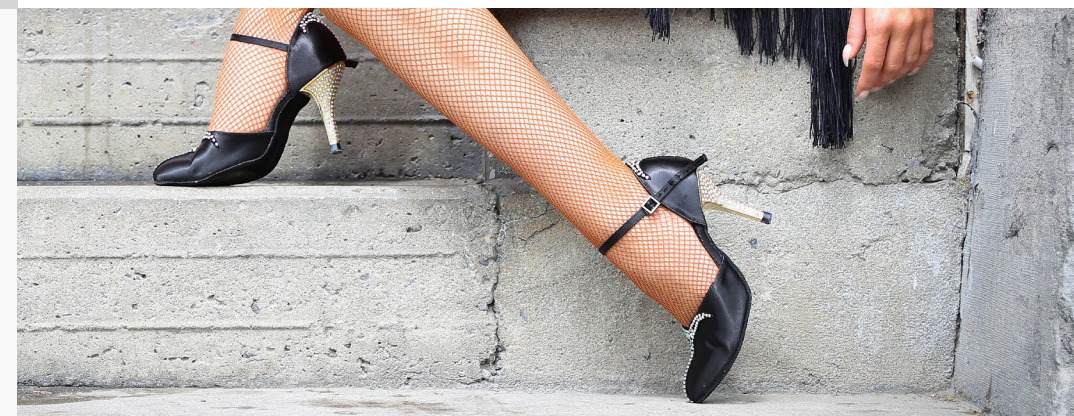


WOMEN'S SHOES

Crystal Collection
Open Toe Collection
Closed Toe Collection
Practice & Teaching Shoes



DANCE BOOTS



MEN'S SHOES

Ballroom and Tango Shoes
Latin and Cuban Heels Shoes
Practice Shoes



 I Love
Dance Shoes

www.ilovedanceshoes.com
1-866-520-6218

WOMEN'S SHOES COLLECTION



WOMEN'S SHOES CRYSTAL COLLECTION

I Love
Dance Shoes



Padma Butterfly

\$229.00

WC-2237-C

A glittery dress shoe featuring an original butterfly design made from satin and decorated with beautiful Australian crystals. Fly elegantly across the dance floor with this unique pair of shoes!

Best
SELLER



Brilliant

\$199.00

WO-985

Add some sparkle to your outfit with the Brilliant Latin dance shoe. Made of metallic silver satin and encrusted with crystals, this peep-toe shoe features a wrap-around strap for ultimate stability.

New



Royal

\$249.00

WC-2373-C

Crowned with rhinestones, this shoe features a classic look to let the competition know you've arrived. This peep-toe shoe offers comfort, beauty, and stability, and the T-strap provides excellent support.

WOMEN'S SHOES CRYSTAL COLLECTION



Hyacinth

\$289.00

WC-2375C

A bright, fun dance shoe that is still elegant and classy. Featuring a classic T-strap shape with a single buckle closure. The twisted front with an open toe ensures breathability and comfort for your feet.



Mirada Crystal Closed Toe

\$229.00

WC-159-B

An eye-popping design accented with beautiful Australian crystals. With a slightly pointed toe and a single strap with buckle closure, these shoes are a perfect addition to your wardrobe.



Pallas Diamond

\$289.00

WC-222-C

The perfect T-strap satin, open toe shoe. Shine like a star on the dancefloor with stunning Australian crystals to give your feet an elegant, brilliant and beautiful look. Amazingly comfortable.

WOMEN'S SHOES OPEN TOE COLLECTION



Durante Side Button

\$159.00

WO - 247

A gorgeous, open toe shoe made from soft and supple silk. Easily adjust for narrow or wide feet with double diamond buckle closures on the side panel. The perfect performance shoe for any level of dancer.



Feronia Twin Diamond Buckles

\$149.00

WO - 236

Beautifully designed and extremely comfortable, this open toe shoe features two diamond buckles on the front panel that can easily be adjusted to suit both narrow or wide feet comfortably.



Freesia

\$199.00

WO - 2385

Showcase your dancer's feet with this satin and suede edge shoe. Featuring small cutouts at the back and a gorgeous diamond on the toe. The T-strap style keeps your foot securely in place.

WOMEN'S SHOES

OPEN TOE COLLECTION



Redgrave

\$179.00

WO - 2363

Show off your moves in style with a classic Latin shoe. Featuring a wrap-around strap, this shoe offers a versatile look while providing you with maximum stability while you're on the dance floor.



Garland

\$189.00

WO - 2382

Add some sparkle to your dance with this intricate performance dance shoe. Featuring a cross strap closure, beautifully braided straps, and an elegant strip of white stones across the toe. This shoe will enhance any outfit.



Gemma Knots

\$159.00

WO - 286

A popular style for professional dancers. Featuring multiple straps around the foot that meet with delicate knots to provide flexibility and comfort. Add crystal rhinestones to make a statement (additional fee).



Amaryllis

\$179.00

WO - TG - 001

A classically beautiful Argentine tango dance shoe with a 3" slim heel. Featuring an open toe, T-strap shoe with a hard leather sole inside and out. Perfect for sliding and pivoting on the dance floor.

****Hard Leather Sole**



Blossom

\$179.00

WO - TG - 002

A classic style shoe perfect for performance or practice. Featuring a 3" slim heel with a single strap and buckle closure for maximum support and an elegant look that will match any outfit.

****Hard Leather Sole**



Calla

\$179.00

WO - TG - 003

A beautiful and attention grabbing dance shoe. The snake skin pattern is bold, yet classic, with a tear drop front strap that is sure to attract all eyes. The single buckle closure and open toe are simple, yet elegant.

WOMEN'S SHOES

OPEN TOE COLLECTION



Harmonia T-Strap
\$179.00
WO - 2396

A classic women's open-toe dance shoe. Featuring a modified T-strap to provide extra support and stability. Look and feel like a star on the dance floor. An exceptional dancing experience, guaranteed.



Jasmine
\$179.00
WO - 2383

Make a grand entrance with this satin dance shoe. Features a single gem encrusted buckle closure and an open toe. With a suede sole, this shoe is extremely supportive and comfortable to wear.



Mia
\$169.00
WO-205

A delicate and beautiful strappy dance shoe. Features four cross straps and a two buckle closure for an extremely supportive shoe. Keep your feet secure and connected to the dance floor.



Ingrid
\$179.00
WO - 2397

A gorgeous two-toned shoe that will get you nothing but compliments. The wrap-around strap ensures a versatile look while offering comfort and stability. Keep your feet comfortable with a peep-toe opening.



Countess
\$179.00
WO - 2399

Announce your presence on the floor with an aristocratic look. Made from satin, the T-strap provides stellar support for long wear. Inner cushioning and a gold wrap-around ensures maximum comfort.



Gardenia
\$159.00
WO - 2360

A classic style of dance shoe with a unique twist. Featuring a braided front that provides a snug and comfortable fit around the dancer's toes. The cross-strap and single buckle closure are simple yet elegant.

WOMEN'S SHOES

OPEN TOE COLLECTION



Gazania Lace

\$179.00

WO - 23976

A delicate and timelessly feminine shoe. Made from lace, covered in satin and decorated with a delicate crossover centered knot with adjustable crossover ankle straps to offer a secure fit.

Best
SELLER



Dahlia Lace

\$179.00

WO - 2379

Understated, but elegant. Featuring a lace upper and satin heel for a feminine and delicate look. The double crossover ankle straps ensure that the shoe fits securely and comfortably.



Andrea

\$169.00

WO - 2387

A must-have wardrobe staple for any dancer. Featuring a T-strap to provide stellar support for long wear. The open, woven toe is the epitome of classic dance shoe styling. Ideal for Latin dance.



Kira

\$189.00

WO-2389

An elegant shoe featuring a wrapped ankle strap and delicate lace make this shoe a unique eyecatcher. Braided details add to this shoe's aesthetic, while being comfortable and supportive.

Best
SELLER



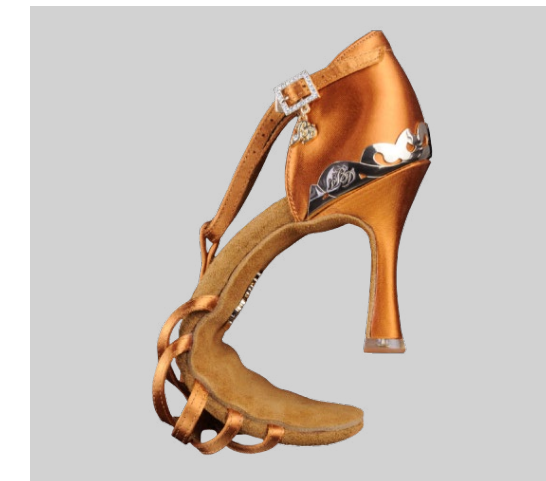
Bacall

\$179.00

WO - 216

A revolutionary shoe designed with greater flexibility while maintaining premium comfort, stability, and elegance. A steel shank between the insole and outsole will make sure you can keep dancing for hours.

With increased flexibility, it's easy to bend the foot and point the toes. Highly recommended for professionals and competitors.



WOMEN'S SHOES

CLOSED TOE COLLECTION



Flame

\$179.00

WC - 1302

Make an impression with this classic Ballroom style shoe. Silver flames sweep over the heel and toe. Features a jeweled buckle to provide additional support so you can pivot and swivel with ease.



Lily

\$159.00

WC - 138

Simple and elegant. Featuring a single cross strap to ensure your foot will remain in place as you glide across the dance floor. The perfect dance shoe for beginners or dancers of all levels.



Flora

\$169.00

WC - 107

A slip on pointy toed shoe designed for maximum comfort and flexibility. Features elastic along the side for a secure fit. Perfect for dancers of all levels.



Venus Strapless Elastic Trim

\$159.00

WC - 191

Designed for Ballroom dancing, this strapless shoe has a unique elastic trim offering an improved fit. Enjoy added comfort, stability and balance. Feel confident with each step, turn and pivot.



Sentada Close Toe - Leather

\$169.00

WC - 103

Beautifully crafted, pointy-toed shoes made from the softest leather for comfort, allowing the foot to articulate with ease. Features two elegant straps that wrap around the ankle with a single buckle closure.



Iris

\$169.00

WC - 110

An elegant closed toe that will shine on the dance floor. The multiple cross straps ensure that this shoe will stay firmly in place while you're flying across the dance floor. Perfect for practice or performance.

WOMEN'S SHOES

PRACTICE & TEACHING COLLECTION



Elegante

\$149.00

WP-T23

Widely used for teaching, practice and performance.

This stylish lace-up design with two eyelets is made from leather and nubuck. The low, wide heel offers the best stability and comfort.



Practica

\$149.00

WP - T45

An open toed shoe made from soft leather with a mesh insert for ventilation and added flexibility. The lower, wide heel offers the best stability and comfort, helping to improve your balance on the dance floor.



Magnific

\$169.00

WP - T3

A teaching and practice shoe made from soft lamb leather. Features a leather inner sole, full shank, and low heel. Provides abrasion resistance and extreme comfort for long hours on the dance floor.

** See page 23 for available colours*



Fantisia

\$169.00

WP - T454

A flexible practice shoe made from lamb leather to provide abrasion resistance and comfort. Features an all leather inner sole, full shank for support and a low Cuban wedge heel to keep your balance.

** See page 23 for available colours*



The Agile

\$159.00

P-JW-1

Our best selling practice shoe. Featuring a unique sole designed for superior balance and improved sliding. Halfway between a jazz shoe and a dance sneaker, this lace up shoe is tailored for comfort.



WOMEN'S SHOES

DANCE BOOTS



Lotsia Red Lips

\$189.00

WP-T1-L

Featuring a low Cuban heel and high-quality leather lining, this shoe provides optimal comfort. The all-leather inner sole and full shank offer good support and abrasion resistance. Show off your fun side.



Luxe

\$179.00

WP-T1-B

A lace-up practice shoe crafted from soft lamb leather and trimmed with a gold edge. Made of lamb leather with a suede lining, the Luxe provides ultimate comfort for hours of wear.

** See page 23 for available colours*



Chloe

\$179.00

WP-T1

A classic style, five-eyelet and rounded toe shoe. Featuring breathable cotton fabric for long hours of wear and a solid sole for superior support and comfort. Perfect for practice or performance.



Felicia Peep-Toe

\$199.00

WB-985

Handcrafted peep-toe ankle boots made of breathable micro fabric and designed for durability. Features black rhinestones, a decorative corset-style lacing on the back and flare heels for extra stability.



Vestia Peep-Toe

\$189.00

WB-985-B&W

Peep-toe ankle boots made using faux black and white snake effect leather and designed for supreme durability. Features corset-style lacing on the back and flare heels for extra stability.



Audra

\$239.00

WB-T46

A beautiful dance boot made from leather with elastic around the calf for a comfortable and easy fit. Featuring the perfect heel height and soft, comfortable leather for long hours of wear.

CREATE YOUR VERY OWN PAIR OF STYLISH DANCE SHOES

STEP 1
Select your model



STEP 3
Pick your heel height
& form

* See page 25



STEP 2
Choose your colour
& material

Satin: 20+ colours
Leather: 40+ colours

* See page 23

Example of lamb leather colour choice:



MATERIAL AND COLOR SWATCHES



Satin Colours:

Top Row:

White / Skin Colour 1 / Skin Colour 2 / Skin Colour 3 /

Second Row:

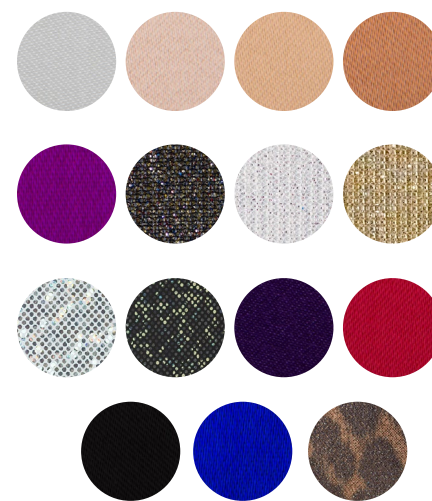
Hot Pink / Metallic Black / Metallic Silver / Metallic Gold

Third Row:

Laser Silver / Laser Black / Purple / Red

Bottom Row:

Black / Blue / Leopard



Soft Leather Colours:

Top Row:

Black / Black Shiny / Beige / Skin Colour

Middle Row:

Gold / Silver / Red / White

Bottom Row:

Purple / Brown / Blue



Lamb Leather Colours:

Top Row:

Black / Red / Hot Pink / Turquoise / Blue

Middle Row:

Orange / Light Pink / Green / Light Green

Bottom Row:

Black Flashy Canvas / Yellow / Skin Color / Burgundy / Light Purple



HEEL SELECTION CHART



HEEL SELECTION CHART

Pick your heel height & form

						
EH1 98mm 3.9"	EH2 85mm 3"	EH4 75mm 2.5"	EH6 70mm 2.5"	EH7 65mm 2.2"	EH8 65mm 2.2"	EH10 65mm 2.2"
						
EH11 55mm 2"	EH12 55mm 2"	EH13 85mm 3.3"	EH14 85mm 3.3"	EH15 75mm 3"	EH16 95mm 3.7"	EH19 102mm 4"
						
TEACHER 50mm 2"	CHILD I 45mm 1.8"	CHILD II 35mm 1.4"	CHILD III 35mm 1.4"			
						
EH17G 85mm 3.3"	EH2G 85mm 3.3"	EH14G 85mm 3.3"	E15G 75mm 3"	EH4G 75mm 3"	EH18G 85mm 3.3"	EH20G 85mm 3.3"
						
					EH21G 55mm 2"	

MEN'S SHOES

BALLROOM & TANGO COLLECTION



New



Thornton

\$169.00

MS-302-1-C

The perfect ballroom shoe. It's light, breathable and highly flexible. Handcrafted from a low-maintenance material of canvas and a suede sole for an easy clean. Ideal for all dance levels.



Adorno Black & White

\$169.00

MS - 306 - C W & B

Crafted from the softest leather for supreme comfort. Features a shiny black front and 5-eyelet lace-up closure to add a sleek finish. Elevate your look with this pair of classy black and white shoes.



Janus

\$179.00

MS - 321

A sleek men's shoe with classic styling. Featuring a 4-eyelet lace-up design, a rounded toe and a cushion on the back. Elastics on either side make this shoe flexible and extremely comfortable.

Best Seller



Adam

\$169.00

MS - 302 - 1

A classic style of dance shoe that is going to be the must-have for this season. This 5-eyelet style is made from patent leather. You'll be sure to steal the show with this perfect ballroom shoe.



Lustrada

\$169.00

MS - 301 - C

This attention grabbing shoe is made from embossed crocodile patent leather. Crafted with a genuine leather lining and a cushioned foot bed to enhance the comfort of these lace ups.

New



Giro

\$179.00

MS - 332

A popular classic style men's shoe with a unique look. Features full-leather, red-thread interiors, and a flexible sole. Extra cushioning offers flexibility and comfort for long hours on the dance floor.

MEN'S SHOES

LATIN & CUBAN HEEL COLLECTION



Nero
\$149.00
MS - 304

Tick off all the boxes for style and sophistication with this formal textured shoe. Perfect for all dance and performance. If you have one pair of dance shoes in your closet, this should be it.



Duello
\$179.00
MS - 331

Glide on the dance floor with this sophisticated two-tone dance shoe. Dual-material exteriors of canvas and leather offer flexibility, stability, and comfort for social dance, practice, or performance.



Hawthorne
\$169.00
MS - 322

This 3-eyelet lace-up stylish shoe is comfortable, stable, and perfect for ballroom dancing. Features an eye catching leather and nubuck combination with a split sole for increased flexibility.



Jacinto
\$169.00
MS - 328

A modern men's dance shoe. A 5-eyelet lace-up shoe to keep feet supported and connected with the floor. Made from stand-out patent leather and stretchy material for flexibility and comfort.



Mundo
\$169.00
ML - 467

A classic style of dance shoe that is perfect for performance, practice, and teaching. A sure favourite as it is a bold, yet traditional style shoe that provides superior support and comfort.



Caurus
\$179.00
ML - 449

A subtle design with a modern twist. Featuring patent leather with suede for an attention grabbing look. The Cuban heel is comfortable and supportive while allowing you to truly feel the floor.

MEN'S SHOES

LATIN & CUBAN HEEL COLLECTION

Best
SELLER



Mason
\$169.00
ML-460

Made from leather and spandex, the Mason provides incredible support and comfort. Extreme flexibility makes this shoe easy to wear for a long period of time. Features a modern five-eyelet style.

New



Rochester
\$189.00
ML - 470

Add sharpness to any Latin look. With patent snake-print, suede upper, and a lace-up closure, the Rochester offers the most stylish shoe design out there. Made for maximum performance.



Logan
\$169.00
ML - 463

A popular style of Latin performance shoe. This shoe is made from patent and soft leather giving it a sleek and modern look. It's comfortable, supportive, and will quickly become your go-to shoe.

New



Duke
\$169.00
ML - 465

Announce your presence on the floor with the Duke, a Latin shoe crafted with canvas and stylish leather accents — a design unique to iLoveDanceShoes! Offers stability, comfort, and style.

New



Colona
\$169.00
ML - 473

An elegant all-black professional dance shoes. Elastic around the heels will hold the feet back and steady, and provide excellent support while dancing. The soft leather sole offers flexibility and allows you to connect your foot with the dance floor to improve grip.



MEN'S SHOES

PRACTICE COLLECTION

New



Hardy
\$169.00
P-T95

Your new practice Latin shoe. Made of highly breathable mesh with a leather trim for added style, the Hardy will provide you with stability and comfort for hours of practice on your feet.



Grayson
\$169.00
P - JW - 8

A sporty twist on a popular shoe. Crossed between a jazz shoe and a dance sneaker, this shoe makes practice even more enjoyable. Eye catching red sides make this shoe fun and sleek.

Best SELLER



The Agile
\$159.00
P-JW-1

Our best selling practice shoe. Featuring a unique sole designed for superior balance and improved sliding. Halfway between a jazz shoe and a dance sneaker, this lace up shoe is tailored for comfort.



HOW TO ORDER & RETURN POLICY

HOW TO ORDER

- Order through our website at ilovedanceshoes.com, by email at info@ilovedanceshoes.com or by calling our toll-free number at 1-866-520-6218.
- To order customized shoes, go directly to the product page to create your look. Depending on the shoe, you can select the heel type, material, color and optional accessories.
- Delivery within 5 days if the item is in stock. For customized shoes or products out of stock, please allow 3 to 6 weeks.

RETURN POLICY

- We guarantee all our shoes for up to 12 months from the date of purchase. Our warranty is only for defective workmanship and/or materials when used under normal conditions for the purpose intended.
- We accept exchanges or returns within 15 days of the delivery date; shoes must be in brand new conditions (unworn, not soiled or damaged) in original packaging and accompanied by the original sales receipt.
- For customized shoes we ONLY allow EXCHANGE if the selected color is black, skin or tan. If the selected color or color combination is unconventional, then we cannot exchange the shoes.
- Full Return policy can be found at ilovedanceshoes.com/returnpolicy



INTERNATIONAL SHOE SIZE CONVERSION CHART



International Women's Shoe Size Conversion Chart														
UK	2.5	3	3.5	4	4.5	5	5.5	6	6.5	7	7.5	8	8.5	9
EURO	32	33	34	35	36	37	38	39	40	41	42	43	44	45
USA	3	3.5	4	4.5/5	5.5/6	7	7.5	8	8.5	9	9.5	10	10.5	11
Length (cm)	21	21.5	22	22.5	23	23.5	24	24.5	25	25.5	26	26.5	27	27.5

International Men's Shoe Size Conversion Chart																	
UK	5	5.5	6	6.5	7	7.5	8	8.5	9	9.5	10	10.5	11	11.5	12	12.5	13
EURO	37	38	39	40	41	42	43	44	45	46	47	48	49	50	51	52	53
USA	6	6.5	7	7.5	8	8.5	9	9.5	10	10.5	11	11.5	12	12.5	13	13.5	14
Length (cm)	23.5	24	24.5	25	25.5	26	26.5	27	27.5	28	28.5	29	29.5	30	30.5	31	32