

# How to Install Free Stop/Cassette Mount

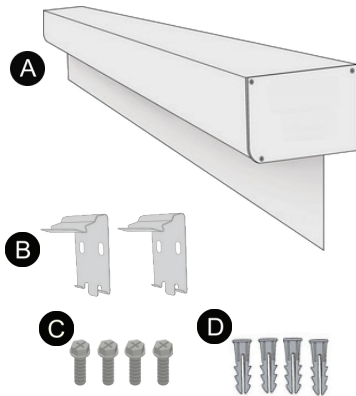


## Parts List

- A** Cordless Shade
- B** Mounting Brackets
- C** Hex Screws
- D** Wall Anchors

### Bracket Chart

Shade Width	Brackets
Up to 42"	2
42" to 72"	3



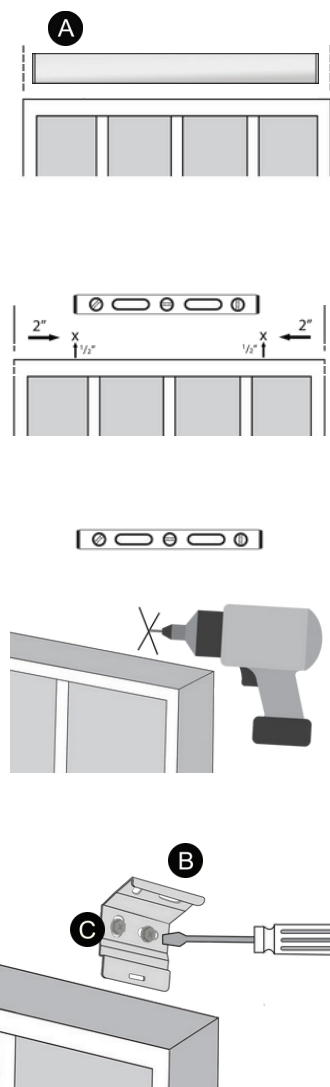
## Tools Needed

- Pencil or Marker
- Measuring Tape
- Screwdriver
- Level
- Power Drill
- 1/16" Drill Bit

Mounting Surface	Fastener
Drywall, Plaster	Wall Anchors (Provided), Expansion Bolts (Not Provided)
Metal	Sheet Metal Screws (Not Provided)
Wood	No. 6 Hex Head Screws (Provided)

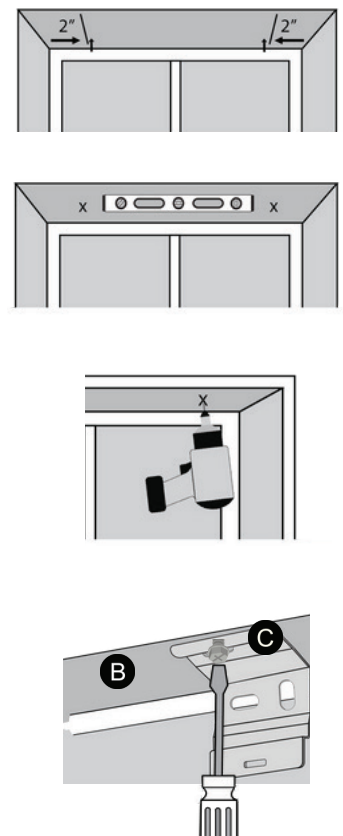
## For Outside Mount

1. Brackets (B) will be mounted to the wall outside the window frame. Use a tape measure to measure the exact width of the shade (A) and mark the edges.
2. Measure in 2" from the markings and 1/2" above the opening of the window frame or window molding. If using a 3rd bracket (B), make a 3rd mark exactly center of outside marks.
3. Brackets (B) must be mounted perfectly horizontal, so use a level to ensure your markings are level.
4. Use a 1/16" drill bit to drill a hole for each screw location.
5. Screw the brackets (B) into place with the provided screws (C). To ensure a secure mount, wall anchors (D) or expansion bolts (not provided) may be needed.
6. Continue to "Installing the Shade"



## For Inside Mount

1. Your shade may be installed on the roof of your windowsill or to the plastic casing of your window (if the latter, follow "For Outside Mount" instructions)
2. Measure 2" from edge of window frame and mark with your pen or pencil.
3. Hold bracket (B) to markings and set it flush to outside edge of window frame and mark where your screws (C) will go. Use a level to ensure brackets (B) are aligned and level across width of the window.
4. Use a 1/16" drill bit to drill a hole for each screw (C) location.
5. Screw the brackets (B) into place. To ensure a secure mount, wall anchors (D) may be needed.
6. Continue to "Installing the Shade"



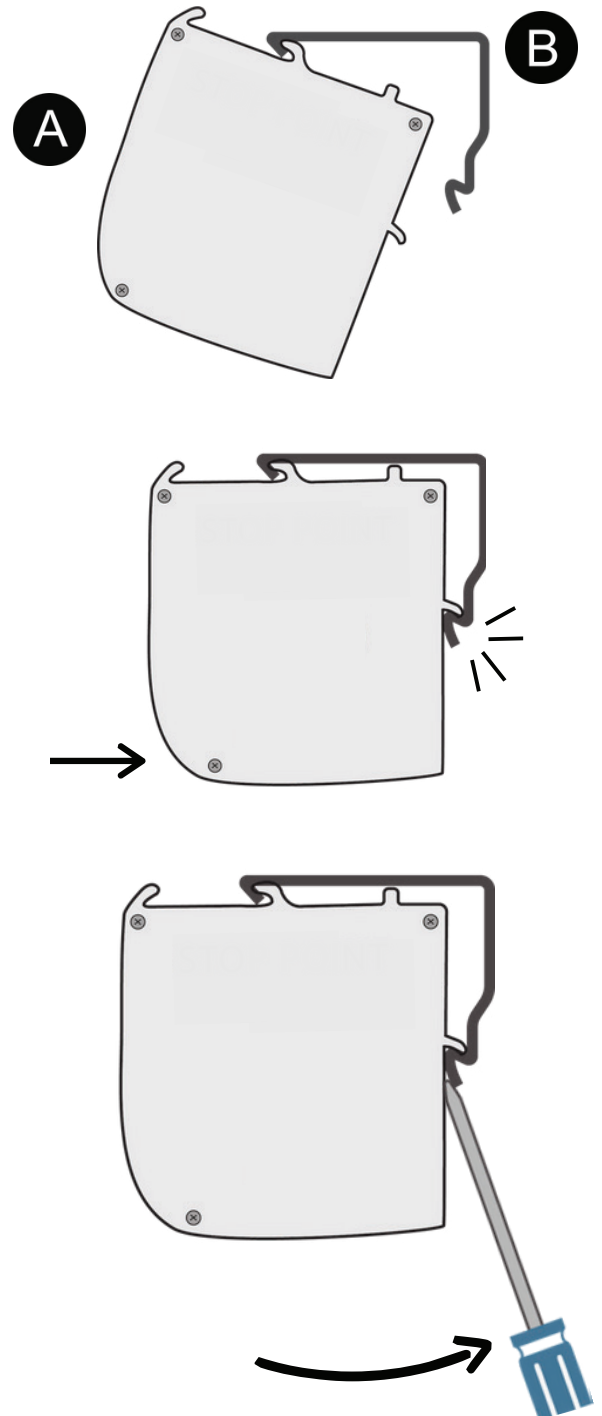
# How to Install Free Stop/Cassette



## Installing the Shade

(Same for Outside and Inside Mount)

1. Find the groove at the top of the headrail (A). Hold the shade so the front is facing you.
2. Rest the groove inside the top hook on bracket (B).
3. Push the shade (A) backwards until it catches onto the back of the bracket (B) and snaps into place. You'll hear an audible "click" when the headrail (A) is securely in place.
4. To remove, insert a screwdriver into the hole on the bracket's bottom tab and push tab back.



# How to Adjust Free Stop/Cassette



## Adjusting the Tension/Position

Rotate the **tension adjustment wheel downward** (when facing the shade) to increase the tension.

Rotate the **tension adjustment wheel upward** (when facing the shade) to decrease the tension.

Rotate the **position adjustment wheel downward** (when facing the shade) to lower the stopping point, allowing the roller shade to stop at a lower position.

Rotate the **position adjustment wheel upward** (when facing the shade) to raise the stopping point, allowing the roller shade to stop at a higher position.

*Note: The position adjust wheel sets the bottom rail's stop point, but it should not be adjust more than 1 inch.*



## Lowering or Raising the Shade

Gravity shades should ideally be raised or lowered by grabbing the bottom rail at the center. This will ensure that the shade does not travel left or right while wrapping onto the tube and potentially damaging the fabric.

By placing a handle at the center of the bottom rail, users will tend to use it thus eliminating possible issues.

