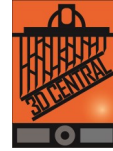




34001-34006 D&H Homebuilt Caboose

HO Assembly Instructions

Bridge Line Design
3D Central



We ask that you please read through all instructions before starting construction to familiarize yourself with the order of assembly and construction methods.

DO NOT skip or re-arrange steps, as they have been carefully researched and are in the correct sequence.

Important:

Please keep in mind that this is a UV cured 3D Printed kit. Direct sunlight will further cure the parts in this kit. If cured too long this can cause some warping and can cause parts to become brittle. Some parts were cured for a specific amount of time to allow some more flexibility during assembly. Once primed and painted most of the curing will stop. Until you are ready to assemble please do not let the parts sit in direct sunlight or other UV light for long periods of time.

Etched Metal Parts:

2 Underbody Brake Levers
2 Hand Brake Chain Assembly
Multiple body railings and grabs
2 Turnbuckle and rods
12 end window cage
2 Cut Levers

Lost or damaged parts may be purchased direct from 3D Central for a nominal charge.

Additional Parts Needed:

Plate C D&H Adirondack Caboose Trucks
Part# 4120-01

Kadee 158 Whisker couplers or the couplers of your choice

Preparation:

You will need the following tools to build this kit:

1 X- ACTO knife with a new #11 blade
1 small pair of tweezers
Small needle files (square, round & flat)
Pin vise with #70 #79 & #80 drill bits
2-56 Tap
Regular viscosity - C.A.
Five-minute epoxy

Parts List:

Included in this kit are the following items:

1 Carbody
4 peel and stick aluminum Weight
1 Underframe
2 cupola roofs Depending on Kit #
2 cupolas Depending on Kit #
1 Air Reservoir
1 Triple Valve
1 Brake Cylinder
2-Coupler Box Lids
Up to 2 end Platforms
2 End Ladders
Multiple Stack and brake wheel options
4 Corner stiffeners
1 Instruction Sheet

- 1 Remove rough spots from the resin parts using wet sandpaper. If you notice that any of the parts are a little 'tacky', wash the part with IPA (Isopropyl Alcohol), let dry, then expose to UV for a minute or two. Anywhere outdoors even on a cloudy day will do.
- 2 Drill and tap the truck holes and the coupler box holes 2-56. Drill all the holes for the etchings using a #79 drill bit.

- 3 Identify and orient the parts using the exploded diagrams. Please note that the details on the parts may change a little depending on the kit you purchased. IE: As Built wood finish or Plywood finish on rebuilt cars. This would be a good time to choose the end platforms, cupola style, and cupola roof.
- 4 There is a small recess in the floor for the weight. We recommend some epoxy or a product like "5 Second Fix", or "Bondic" to glue the weight in place. These are viscous UV activated resin products. You can of course also rely upon the self adhesive tape.
- 5 Test fit the underframe to the carbody. Ensure that it fits up into the carbody, resting on the sills inside.
- 6 Choose and then test fit the end platforms. DO NOT ATTACH them until you trill out the railing for the brake rod. We recommend drilling this before you remove them from the supports.
- 7 Apply the brake detail parts to the underframe. We have included Brake Levers for modelers who wish to super detail the underbody running gear.
- 8 Remove the end ladder assemblies from the small parts support group. Mount them to the corresponding mounting braces on the ends of the car as a test fit. Do not glue until painting is complete
- 9 Add the support rod and turnbuckle etched parts. These are attached to the body of the car sides as per the exploded diagram. There are small turnbuckles that can be added for thickness.
- 10 Add the etched parts for the railings. Please refer to the exploded diagram for placement. Tack glue with ACC
- 11 Glue the brake wheel in place on top of the brake wheel housing. You have multiple options here. Please check your prototype
- 12 If you wish to add air hoses, drill holes #70, but do not glue them in yet as they can be quite fragile.
- 13 Complete final placement of the underbody into the body. Screw iithe end platforms in place with 2, 2-56 Screws This will hold the underbody in place. Add coupler and coupler box.
- 14 Paint and letter the car.

This completes the construction of your HO Scale D&H Homebuilt Caboose. If you have any questions or comments, please write to:

3D Central
477 Knopp Drive
Muncy PA 17756

info@3DCentralTrains.com

www.3DCentralTrains.com

MANUFACTURER'S NOTES:

Please also note that we have included some duplicate parts in this kit. Leftover parts will be normal.

Build lines: As 3D printing technology becomes more mature, build lines are becoming a thing of the past! However, we're not completely there yet!. If you do see some 90% of build lines will disappear after your first coat of primer. You may also SEE build lines but when running a fingernail over it, you won't actually feel it. Now, IF you do have a kit that has some build lines that do not disappear with the first coat of primer, you may have to do some sanding and possibly some filling. **NOTE:** If you MUST sand the kit or parts, **ALWAYS** wet sand it as resin dust may be harmful to you if inhaled!

We do our best to go over each kit for random flaws in the printing process but it CAN happen. If you have a deep line or other obvious printing flaw please let us know right away and we will make it right!

Bridge Line Design

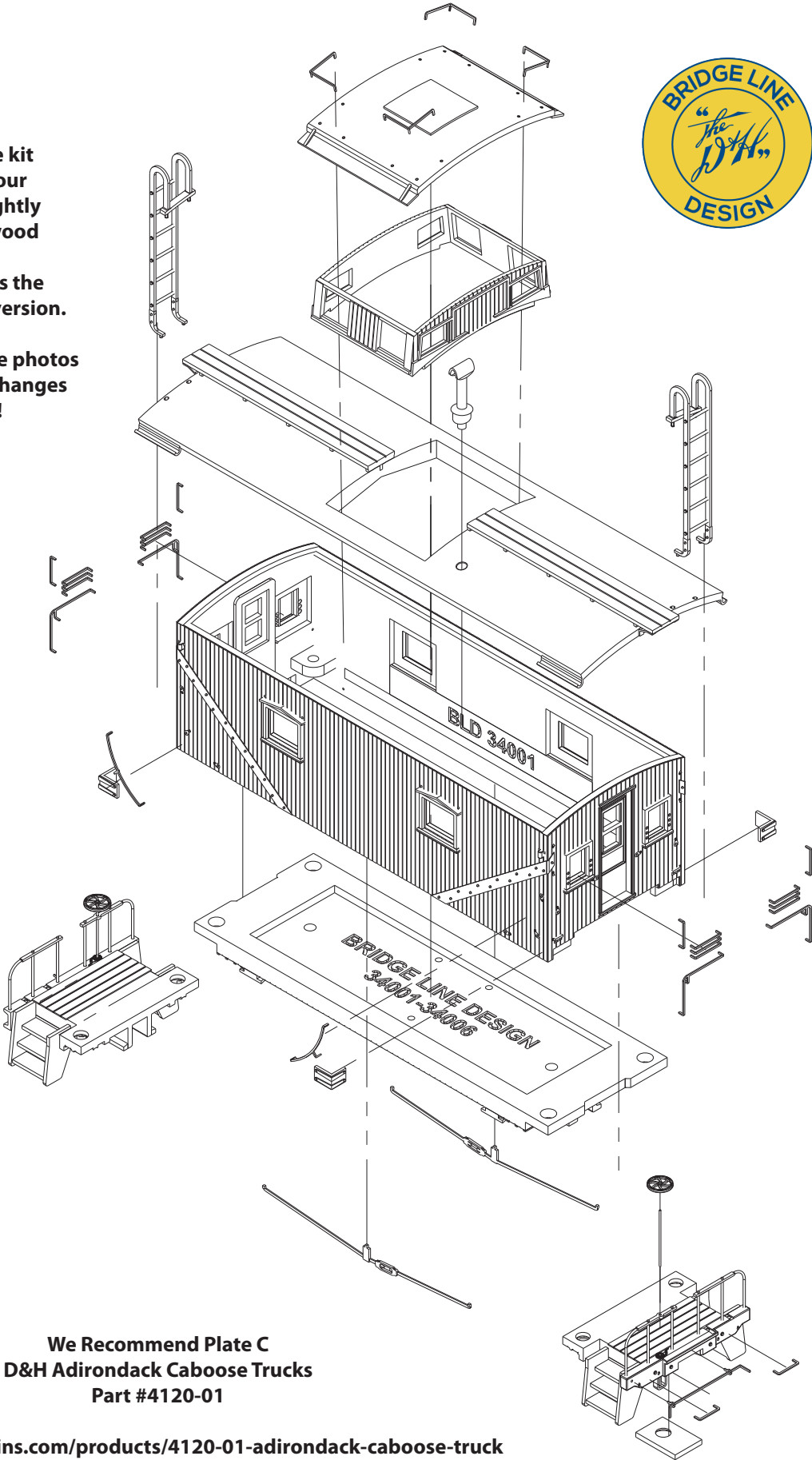
D&H Homebuilt Wood Caboose Exploded Diagram



Depending on the kit you purchased your parts may vary slightly
IE: As Built or Plywood

General Assembly is the same between each version.

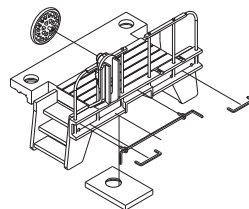
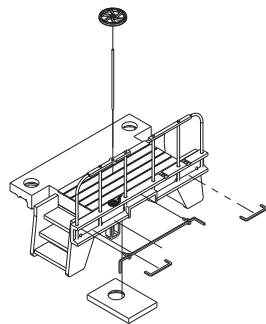
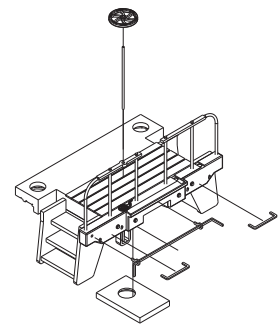
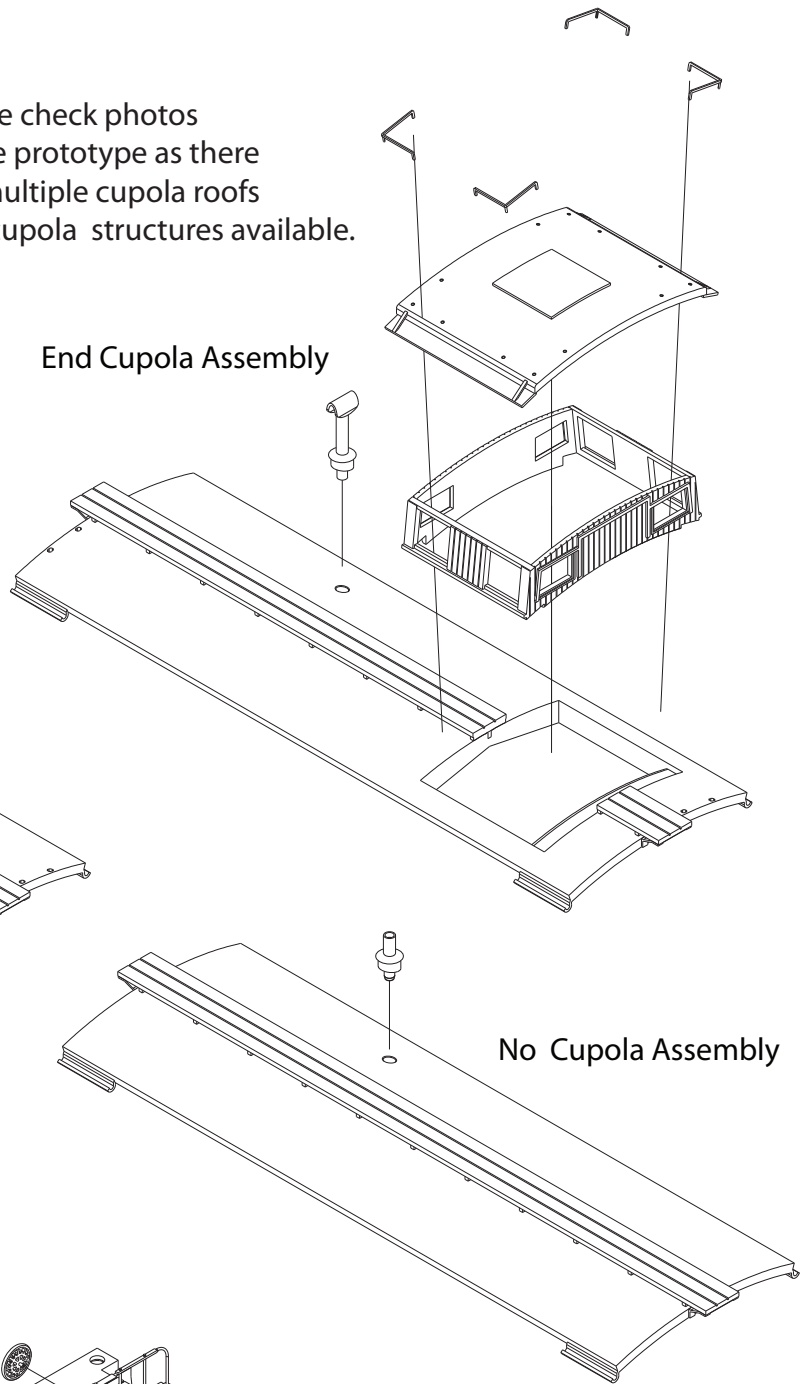
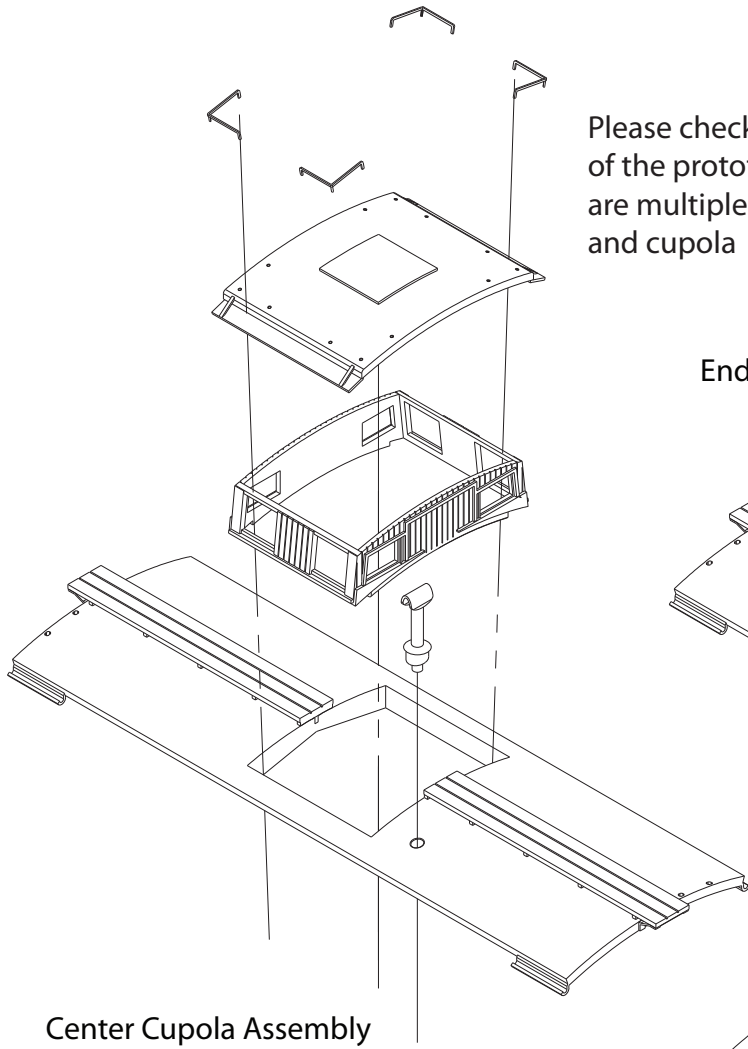
Please check prototype photos as there were MANY changes over the years!



We Recommend Plate C
D&H Adirondack Caboose Trucks
Part #4120-01

Roof and End Platform Details

Please check photos of the prototype as there are multiple cupola roofs and cupola structures available.



Early End Platform

Mid End Platform

Late End Platform

