

PART #: 10-1003

Vehicle Application

- YEAR: 2011-2016
- MAKE: Ford
- MODEL: F-250 and F-350 Crew Cab
Long Bed
- ENGINE: 6.7L Diesel

Required Tools

- Flathead Screwdriver
- Mallet/Hammer
- 13mm Socket
- 19mm Deep Socket
- Ratchet
- 12" Driver Extension

Optional Tools

- Vehicle Lift
- Transmission Jack
- Precision Pick

Before You Start

- Please read the entire product guide before proceeding
- Ensure all parts are present.
- If you are missing any parts, please call or text us at (909)-675-1313
- Do not work on your vehicle while the underbody components are hot.
- Make sure the vehicle is in park or the parking brake is set if you plan on working on the ground. If working on a lift, make sure the vehicle is lifted safely and securely.

Before You Start

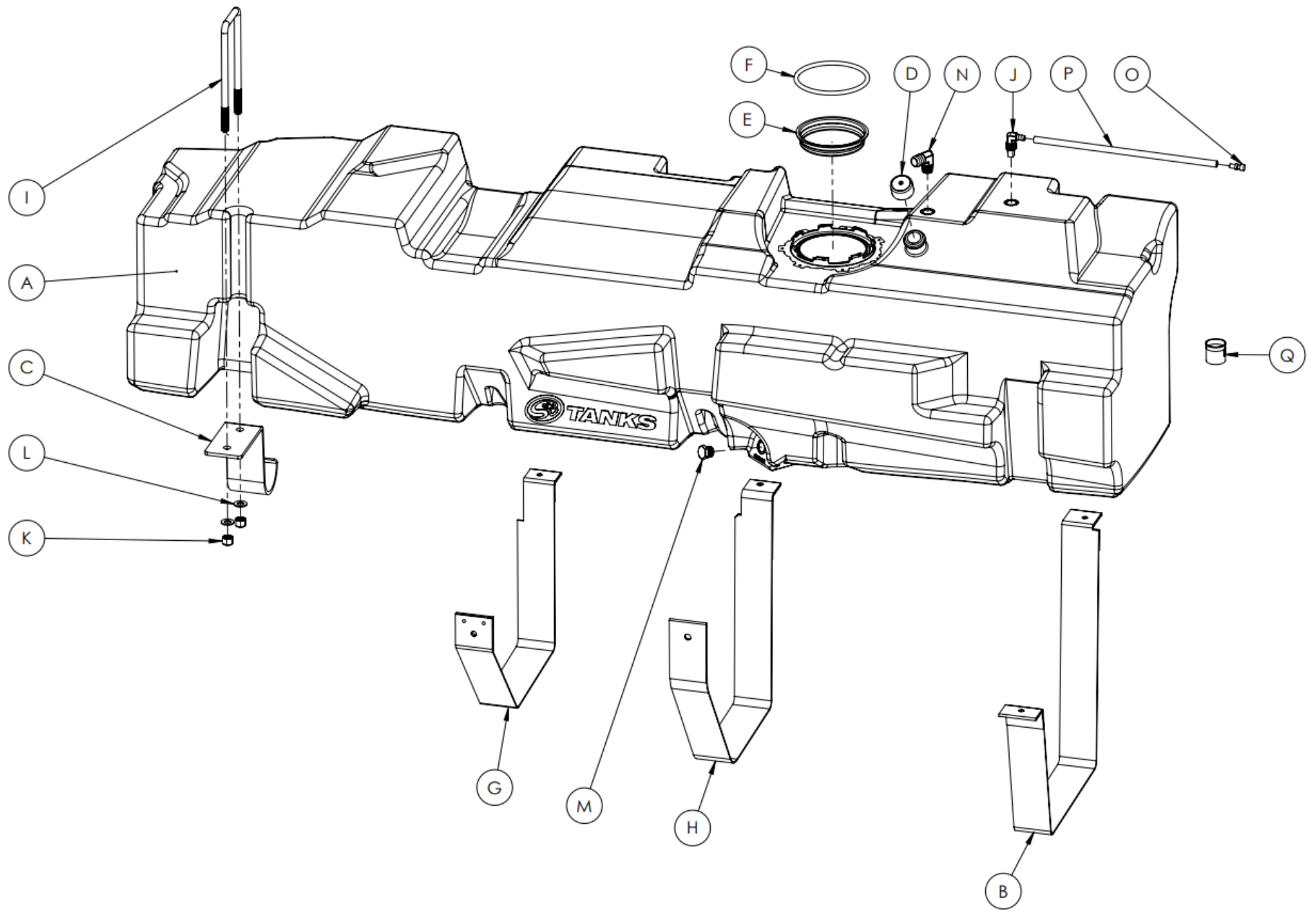
Drain your original fuel tank before beginning the S&B Installation process. S&B Tanks recommends removing only an empty or near empty tank for your safety. We recommend using a siphon or electronic transfer pump.

Disconnect and isolate both of the negative battery cables

Before installing S&B Tank, conduct pressure test to ensure o'ring is properly seated.

In-bed Auxiliary Fuel Tanks will void the Lifetime Warranty.

Nozzle at high flow fuel station may continue to "click off". Tank is designed to work at regular fuel stations.



ITEM	PART NUMBER	DESCRIPTION	
A	10-1003	HIGH CAPACITY REPLACEMENT TANK	1
B	TI1001-00	REAR STRAP	1
C	TI1002-00	FRONT BRACKET	1
D	TI1092-00	TANK FILLER COVER	1
E	TI1093-00	TANK OPENING PLUG	1
F	TI1094C-00	BUNA-N 50 DURO 8MM CS	1
G	TI1095-00	FRONT STRAP FOR 10-1003	1
H	TI1097-00	MIDDLE STRAP FOR 10-1003	1
I	TI1111-00	FRONT U-BOLT,	1
J	TI1122-00	ROLL OVER VENT FITTING, 1/2" NPT	1
K	TI1123-00	NYLON-INSERT LOCK NUT	2
L	TI1124-00	WASHER	2
M	TI1125-00	.5" PIPE PLUG	1
N	TI1129-00	BARBED VENT FITTING, 90" ELBOW, 3/4" BARB to 1/2" NPT	1
O	TI1141-00	ROLLOVER VENT CAP	1
P	TI1149-15	5/16" FUEL HOSE 15"	1
Q	TI1175-00	ICV, IN FILL PIPE	1

INSTALLATION INSTRUCTIONS

IMPORTANT NOTE

If your tank came out with a cutout in the baffle like this. You will be using the OEM fuel float



STEP 2

Disconnect the vent and fill hose from the filler/vent neck assembly.

- Flathead Screwdriver



STEP 1

Raise the vehicle up on a lift to working height. The rear of the drivers side frame rail needs to be unobstructed as the S&B Tank will protrude under the frame rail.

- Installation can be completed without a lift. Make sure the vehicle is safely parked with the parking brake set. If your truck is lowered or has running boards you may have to use a jack to get the S&B Tank in position.



STEP 3

Remove the OEM skid plate if equipped. This will not be used again.

- 13mm Socket
- Ratchet



