

## **PART #: 10-1001**

### **Vehicle Application**

- YEAR: 2011-2016
- MAKE: Ford
- MODEL: F-350, F-450, and F-550  
Cab & Chassis
- ENGINE: 6.7 Diesel

### **Tools Required**

- 15mm Socket
- 19mm Socket
- Ratchet
- 10" or 12" driver extension
- Flathead Screwdriver or 8mm Nut  
Driver
- Mallet or Hammer
- Transmission or Floor Jack

### **Optional Tools**

- Vehicle Lift
- Precision Pick
- Pry Bar

## **Before You Start**

- Please read the entire product guide before proceeding
- Ensure all parts are present.
- If you are missing any parts, please call or text us at (909)-675-1313
- Do not work on your vehicle while the underbody components are hot.
- Make sure the vehicle is in park or the parking brake is set if you plan on working on the ground. If working on a lift, make sure the vehicle is lifted safely and securely.

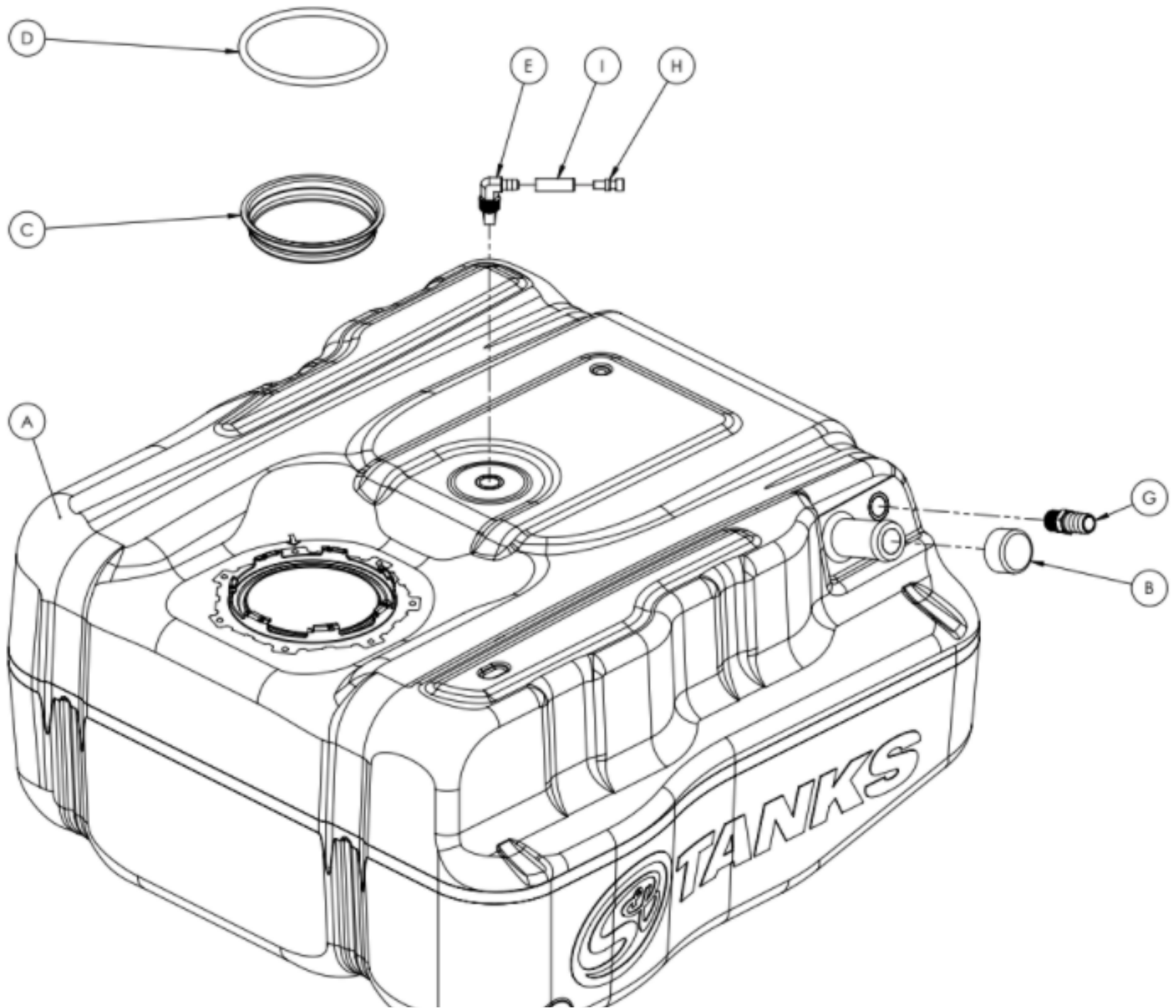
## **Before You Start**

Drain your original fuel tank before beginning the S&B Installation process. S&B Tanks recommends removing only an empty or near empty tank for your safety. We recommend using a siphon or electronic transfer pump.

Disconnect and isolate both of the negative battery cables

**Before installing S&B Tank, conduct pressure test to ensure o'ring is properly seated.**

**In-bed Auxiliary Fuel Tanks will void the Lifetime Warranty.**



ITEM NO.	PART NUMBER	DESCRIPTION	QTY.
A	10-1001	HIGH CAPACITY REPLACEMENT TANK	1
B	T11092-00	TANK FILLER COVER	1
C	T11093-00	TANK OPENING PLUG	1
D	T11094-00	BUNA-N 50 DURO 8MM CS x 17.32" CUT LENGTH	1
E	T11122-00	ROLL OVER VENT FITTING, 1/2" NPT	1
F	T11125-00	.5" PIPE PLUG	1
G	T11128-00	BARBED VENT FITTING, STRAIGHT, 3/4" BARB TO 1/2" NPT	1
H	T11141-00	ROLLOVER VENT CAP	1
I	T11169-02	5/16" FUEL HOSE 2"	1

# INSTALLATION INSTRUCTIONS

## STEP 1

Raise the vehicle up on a lift to working height.

- Installation can be completed without a lift. Make sure the vehicle is safely parked with the parking brake set.



## STEP 2

Disconnect the vent and fill hose from the filler/vent neck assembly.

- Flathead Screwdriver or Nut Driver



## STEP 3

Center the hydraulic jack underneath the fuel tank and raise

## STEP 4

Remove the 4 bolts that fasten the skid plate to the frame.

