

## **PART #: 10-1000**

### **Vehicle Application**

- YEAR: 2011-2016
- MAKE: Ford
- MODEL: F-250 and F-350 Crew Cab Short Bed,
- ENGINE: 6.7L Diesel

### **Required Tools**

- Flathead Screwdriver
- Mallet/Hammer
- 13mm Socket
- 19mm Deep Socket
- Ratchet
- 12" Driver Extension

### **Optional Tools**

- Vehicle Lift
- Transmission Jack
- Precision Pick

## **Before You Start**

- Please read the entire product guide before proceeding
- Ensure all parts are present.
- If you are missing any parts, please call or text us at (909)-675-1313
- Do not work on your vehicle while the underbody components are hot.
- Make sure the vehicle is in park or the parking brake is set if you plan on working on the ground. If working on a lift, make sure the vehicle is lifted safely and securely.

## **Before You Start**

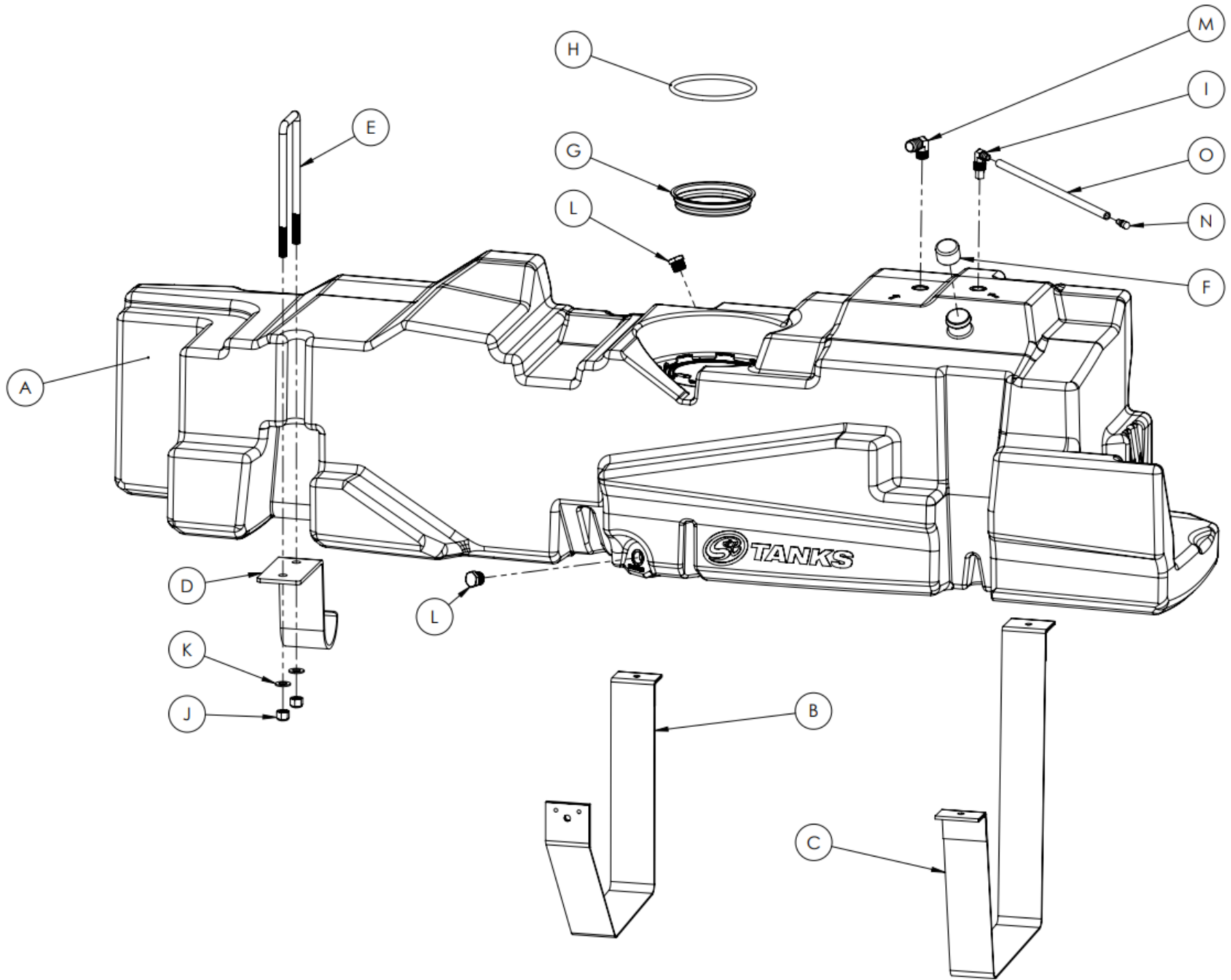
Drain your original fuel tank before beginning the S&B Installation process. S&B Tanks recommends removing only an empty or near empty tank for your safety. We recommend using a siphon or electronic transfer pump.

Disconnect and isolate both of the negative battery cables

**Before installing S&B Tank, conduct pressure test to ensure o'ring is properly seated.**

**In-bed Auxiliary Fuel Tanks will void the Lifetime Warranty.**

**Nozzle at high flow fuel station may continue to "click off". Tank is designed to work at regular fuel stations.**



ITEM NO.	PART NUMBER	DESCRIPTION	QTY.
A	10-1000	HIGH CAPACITY REPLACEMENT TANK	1
B	TI1000-00	MIDDLE STRAP FOR 10-1000	1
C	TI1001-00	REAR STRAP FOR 10-1000	1
D	TI1002-00	FRONT BRACKET	1
E	TI1004-00	FRONT U-BOLT	1
F	TI1092-00	TANK FILLER COVER	1
G	TI1093-00	TANK OPENING PLUG	1
H	TI1094-00	BUNA-N 50 DURO 8MM O-RING	1
I	TI1122-00	ROLL OVER VENT FITTING, 1/2" NPT	1
J	TI1123-00	NYLON-INSERT LOCK NUT	2
K	TI1124-00	WASHER	2
L	TI1125-00	.5" PIPE PLUG	2
M	TI1129-00	BARBED VENT FITTING, 90" ELBOW, 3/4" BARB to 1/2" NPT	1
N	TI1141-00	ROLLOVER VENT CAP	1
O	TI1149-15	5/16 FUEL HOSE 15"	1

# INSTALLATION INSTRUCTIONS

## IMPORTANT NOTE

If you received a tank with (2) rollover vents as shown, please follow the additional installation steps which are highlighted in blue.



## IMPORTANT NOTE

If you received a tank with a "cutout" in the baffle, please follow the additional installation steps which are highlighted in blue.



