

Linara

by ROMO





In a world of prolific colour, our mind, body and emotions are influenced by our surroundings.

Uplifted by shades of yellow and orange, calmed by tones of blue and green and warmed by hues of red and pink, subtle variations of colour have the ability to change perception, mood and mindset. Inspiring all to express their individuality, for the past 25 years, Linara has offered a beautiful spectrum of colour. In honour of such a momentous milestone, 25 new colours enter the fold.

25 Years of Linara

Page 4

Balanced Blues

Page 16

Grounded Greens

Page 6

Earth & Stone

Page 20

Spice Trail

Page 10

Cushions

Page 24

Fresco Tones

Page 14

Fan Deck

Page 26

New Colours

CELEBRATING 25
25
YEARS
YEARS OF LINARA

The pursuit of the perfect plain; 25 years ago, the now iconic Linara linen union burst onto the interior scene with an abundance of characterful qualities that would speak to those with a love of understated indulgence.

In its 25th year, we celebrate the much-loved features of this beautiful plain and honour the flourishing history of this charming fabric. Setting Linara apart; texture, colour, durability and practicality combine in equal measure, culminating in a timeless quality that surpasses all expectations.

A gentle brushing of the pile creates an indulgent peach-skin finish, an irresistible tactile feature that elevates this cloth from humble origins to a truly enchanting plain, winning the hearts of many over the course of its 25-year reign. Its unrivalled palette, which began with just 44 colours, has evolved over time, and now includes 385 shades that emphasise the importance of colour and the joy that it instils.

Versatile and practical in every sense, Linara is washable and is as equally magnificent for embellishing windows as it is transforming furniture. Be it the coordinate or the statement, Linara symbolises thoughtful design, where every aspect has been considered, resulting in a go-to fabric that remains incomparable.

533 Cajun | 545 Copper | 539 Russet | 534 Pimento | 535 Sakura | 536 Tuscan Pink | 543 Hoya | 538 Osprey
525 Catkin | 541 Almond | 542 Tawny | 532 Husk | 546 Soft Jade | 529 Sage | 528 Lichen | 537 Moss | 547 Adriatic
540 Bonsai | 527 Ivy | 531 Heron | 549 Pietra | 530 Thunder | 526 Mariana | 548 Twilight | 544 Venetian Blue

Grounded Greens

Nature plays a powerful and influential part in interiors, inspiring a calmer existence and encouraging mindful repose with its palette of deep green hues. Indicative of balance and harmony, a medley of Lichen, Ivy and Moss tones are strong yet soothing in their earthy richness.





Reflecting nature's palette, the cocooning allure of verdant greens, nurture and envelop the senses.

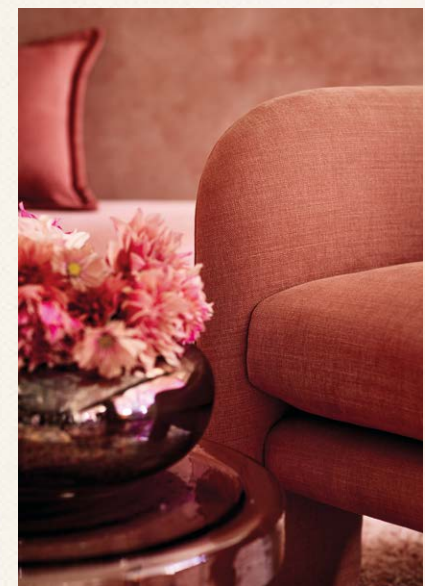


Spice Trail

Sweet notes of spice tones and blush pinks are a welcoming blend of irresistible warmth, subtle invigoration and beautiful elegance. Instantly inviting, this equilibrium of shades is a colourful equivalent to a warm embrace.



Delicate shades of Sakura and Tuscan pink exude a soft femininity, while fiery shades of Pimento and Russet are a joyful addition of colour.





Fresco Tones

Earthy pigments bestow a sense of nostalgia as they connect us to nature and the captivating landscapes we reside in. Varying hues of Tawny, Soft Jade, Hoya and Copper are sophisticated and calming, creating solace with their restful tones.



Balanced Blues

A connection with tranquillity and positivity, the beautiful spectrum of blue tones resonates with mind and body, reminiscent of clear skies, vast oceans and turquoise seas. Shades of Adriatic, Venetian Blue and Twilight are rich with deep decadence yet steeped with a sense of calm.





Rich with history, for centuries the colour blue has graced the interiors world. With a natural air of sophistication and enchanting pigmentation, the mesmerising depths of blue hues are irresistible.



Earth & Stone

A palette that radiates quiet luxury, neutral hues exude a timeless aesthetic, with the ability to enhance a space with their understated presence. In perfect balance, effortlessly elegant tones of Catkin, Osprey and Thunder are a contemporary embodiment of an enduring palette.





Cushions

Striking a harmonious balance of form and colour, the Linara cushion collection exudes inspiring tones and inviting texture. Whether it be a statement or a complementary piece, these considerately curated cushions are beautifully enriching and add a welcome touch of decorative comfort.





New Fan Deck

In celebration of Linara's 25th birthday, the unrivalled spectrum of colour is now presented in the form of a revolutionary fan deck set. Portable, compact and practical, the set contains seven fan decks, each categorised by colour, showcasing the abundant palette of shades, including the 25 new colours.

“Beautifully designed, this innovative colour fan deck set offers endless possibilities.”

Compact, portable and so easy to use, this really is a must have tool for all Linara fans.”

Emily Mould,
Director of Design, The Romo Group



LINARA
Washable Linen Union



With thanks:

Bert & May | Cavaliero Finn Gallery | Chapel Street London | Emily's House London | Every Story
GoModern | Made in Britaly | Neptune | Rebecca Proctor | Roast Designs | Robert Langford | The Specified



Part of The Romo Group, Romo products are available worldwide. For a full list of our international showrooms and distributors or to find your nearest supplier, please visit our website.

romo.com