



KOSMOS MALABARES



KOSMOS MALABARES

USER MANUAL

JUGGLING CLUB SUPERNOVA
SWING CLUB GALAXY

WITH MAGNETIC PROGRAMMING
TECHNOLOGY
plus
DUAL PROGRAM FEATURE



INDEX

INTRODUCCION

New features	2
General features	2
Use instructions	3

GENERALITIES

Turning on and off	4
One active memory operation	4
Two active memory operation	4
How to change the operation mode	5
How to save the desired program	5
How to activate the second memory	5
Operation and program selection chart	6
Battery charging	7
Looking after your product	8
Twelve month warranty	8
Program mode description	9
Frequently asked questions	10

USER MANUAL

Thank you for purchasing a Kosmos Malabares product. Please take some time to read this simple manual in order to get full benefit and care of the Kosmos Malabares illuminated and magnet-programmable products.

All Kosmos Malabares illuminated products are the result of many years of experience, which have allowed us to standardize some use and quality features. Still, we expect to keep growing with you in order to be able to offer better products and performance, so do not hesitate to contact us to share any concerns you may have at www.kosmosmalabares.com

New features

All products covered by this manual has some new features:

Dual Program (some models): these products can store up to 2 custom program. This feature improves the product customization by duplicating the programming choices. It also enables to the user to use both programs or only one. When using this feature during performances, the any of the stored programs can be activated or switched from one to the other one with no necessity of entering program mode. Every program stores it own colors and parameters.

Incorporation of the innovative magnetic programming® system, developed by Kosmos Malabares. This system was launched in 2006 with the first magnet-programmable clubs, and now extends to all items increasing colour options, stage performance, durability and user-friendliness.

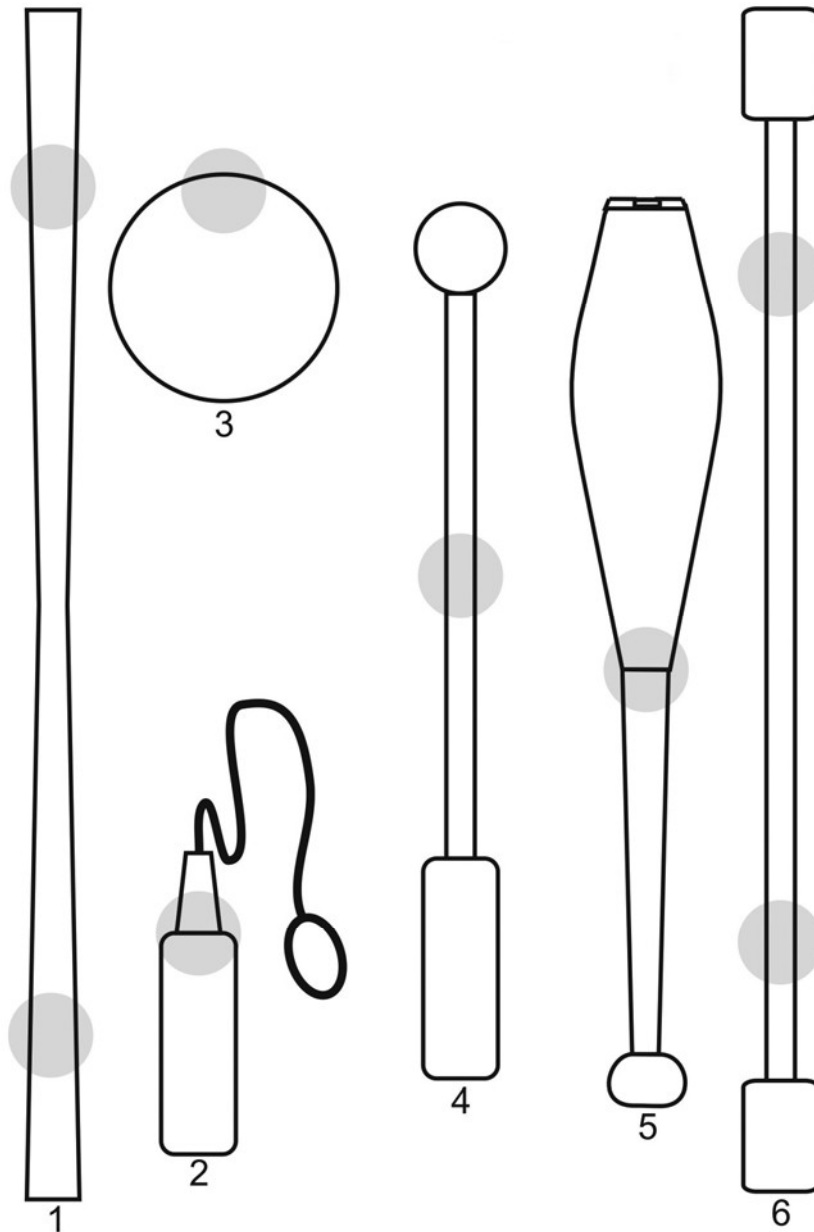
new internal design based on balanced development philosophy and armoured core mechanism

General features

New stand-by.
Magnetic programming.
NiMh batteries, light and minimum "memory effect". They are also safe for airplane transportation
3 to 6 hours of continuous operation (depending on the program)
Shockproof design.
RGB LED technology
A wide variety of bright colors to be freely chosen and more than 1500 possible combinations (depending on the model)
Multi multicolored programs for juggling and swing performances.
DEMO mode displays all the modes automatically
Memorization of operating 1 or 2 program

Use instructions

The magnetic programming technology allows to control the illuminated product by sliding a magnet close to the "sensitive" area, whose location depends on each product. The circles below indicate the location of this area in each product.



Note

1. Golo
2. Poi
3. Ball. The sensitive area is opposite to the charging connector
4. Swing
5. Club
6. Staff

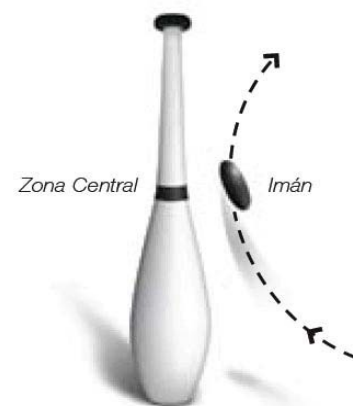
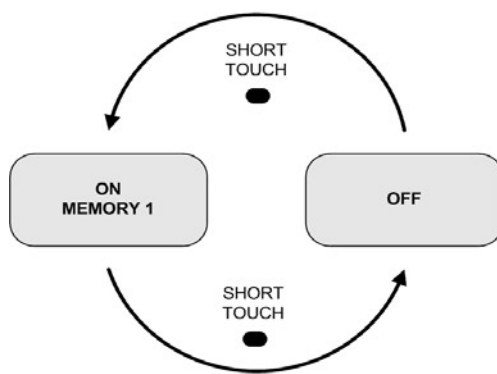
The product glows in red every time the magnet is detected.

Turning on and off

The products with dual programming feature allows to activate 1 or 2 any program from the program list. In case of 2 program are activated, is possible to switch from first one to second one without entering on program mode.

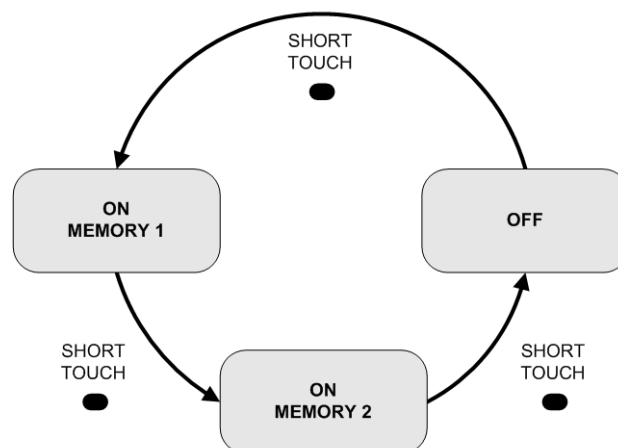
One active memory operation:

- 1) Switch on the illuminated product by sliding the magnet over the sensitive area. The product will always glow in the previously saved program.
- 2) Switch it off by sliding the magnet again. The program stored in position 2 is not active.



Two active memory operation:

- 1) Switch on the illuminated product by sliding the magnet over the sensitive area. The product will always glow in the program stored in position 1.
- 2) Slide the magnet again to switch to the program stored in position 2.
- 3) Switch it off by sliding the magnet again.

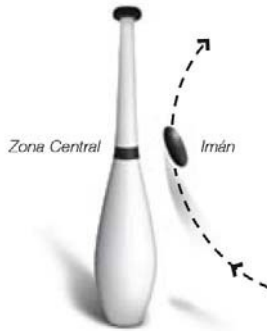


How to change the operation mode



1) Switch on the illuminated product

2) Enter the programming menu by keeping the magnet close to the sensitive area until the red light turns off. When it is already off, move the magnet away. The programming menu will now be active.



3) Change the active program by sliding the magnet over the sensitive area. You will get a different program every time.

Take a look of the program description chart on this manual.

In all illuminated products with Magnetic Programming® technology, some operation modes can be fully customized in one or two colors. This means that it is possible to freely choose the color or colors to be used and combined in one operation program. This unique feature increases the possible color combinations to over 1500.

How to save the desired program.

Once you have found the desired program and colours, you must save it in memory position 1 by keeping the magnet close to the sensitive area until the red light goes off. When moving the magnet away, a 6 second scrolling bar in red will be displayed. If you wait until the scrolling bar reaches its end, the option of second program will be disabled and the operation will be like "one active program operation".

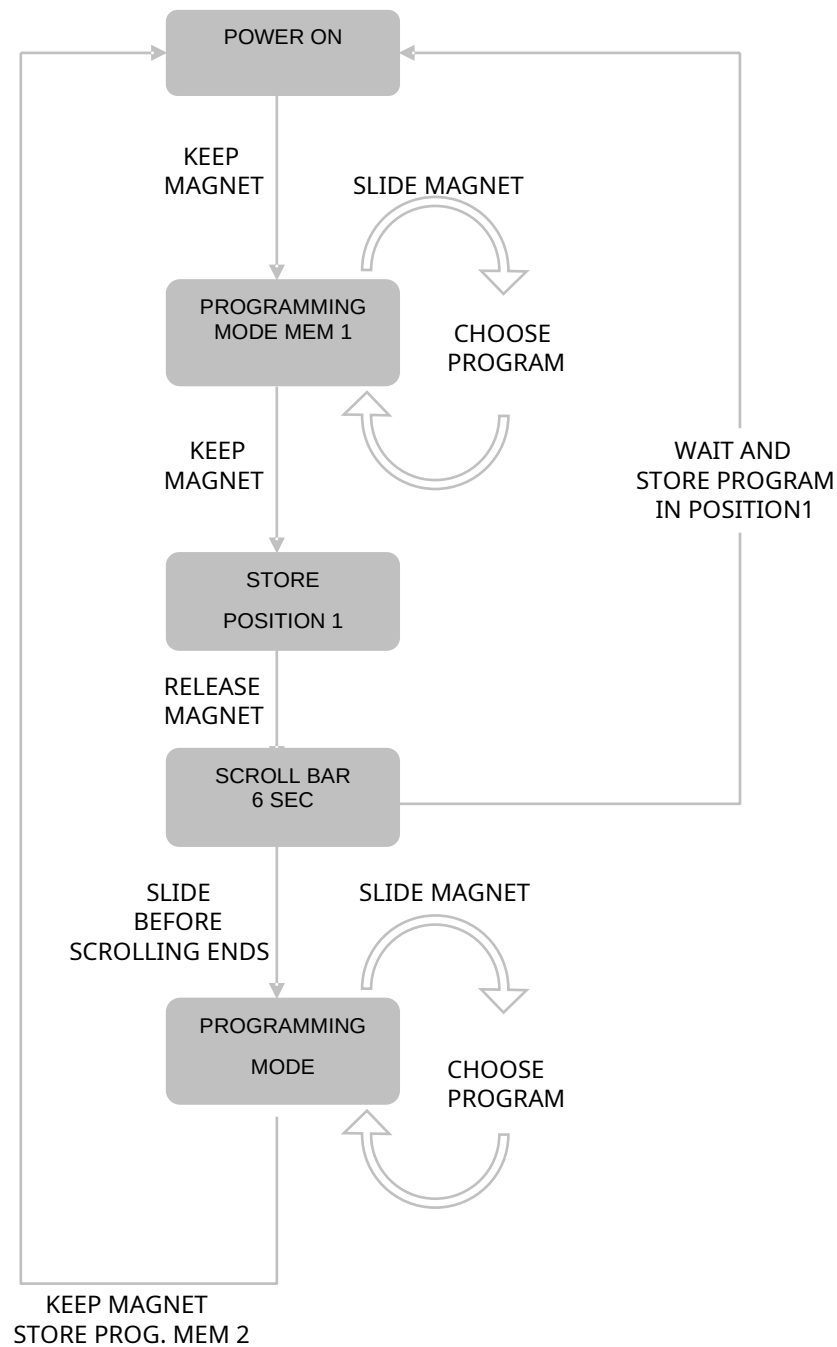
How to activate the second memory.

After the storing the first program and remove the magnet, the 6 second scrolling bar will be displayed. Slide the magnet before the scrolling bar reaches its end to activate the second memory. Chose the desired program by sliding the magnet in same way as choosing memory 1 (see programming table) and store it by keeping the magnet until the red light goes off. Operation now corresponds to "two active program operation".



In order to avoid unwanted operation, never transport the magnet close to the illuminated products sensible zone.

Operation and program selection chart



Note:

Program mode does not deactivate by itself after a certain time.
 Turn-off operation is not possible while in program mode
 The program list is cyclic, so after displaying the last mode in the program table it will begin in MODE 1 again.
 Take a look on the program chart at the end of this manual.

Battery charging

The illuminated product will lose brightness when battery level is low. If the battery reaches a very low level, the illuminated product will only glow in red. If the battery reaches a critical low level, the illuminated product will flash a red light and then it will be turned off by the battery protection circuitry.

We recommend a complete battery charge (14 hours) when the brightness is low. The approximate battery life is specified in the program table for each model. Normal life is about 3 hours. Extended life is between 3 and 6 hours.

The batteries can be charged by using any multicharger available in Kosmos Malabares:

AC adaptor 220V/12VDC - 300mA


Travel AC auto voltage adaptor 110-240VCA / 12V 500mA

charge distributor to be used by any 12V source / CAR adaptor

You can also use another standard AC adaptor in case of missing or broken charger, because the charging regulator has been included inside every illuminated product. This way you just need to buy an AC adaptor with the following specification:

Output: 9 to 24VDC (12V recommended) / 300mA

Connector type: female plug, 2,1mm

Polarity: +  - (built in reverse polarity protection in every product)

How to charge the batteries.

To charge the battery you should plug any of the charger outputs to the product charging connector.

If the product is on, it will turn off when receiving charge. This way, it is easy to check the charging procedure: if the juggling product does not turn off, it means there is some abnormal behaviour.

The charging time is 14 hours for full charge. It is possible to make partial charges by charging 7 hours, then using the product for a while and then charging again.

Note: charging the product for more than 14 hours will not increase the glowing time.

In case you forget the charger connected to the product for longer time, the protection circuitry will avoid any overload.

Simultaneous charging of different Kosmos Malabares products connected to the same charger is allowed.



System reset:

Every time the product is charged, a restart occurs. This reset does not clear the program memory. If for any reason a reset is needed just plug the charger into the AC outlet supply.

Looking after your product

The illuminated products have been designed for usual falls and kicks during juggling play. The casing material allows impacts on its surface. Use a soft cloth with water or non corrosive soap to clean it.

Avoid any liquid contact in the charging connector zone.

Make a full battery charge prior to store your illuminated product for long periods.

Make a full charge at least one every 3 month.

Avoid exposures to extreme cold or hot conditions.

Avoid shocks on the charging connector when the AC adaptor plug is inserted.

Do not use under the rain.



This symbol on the product or on its packaging indicates that this product shall not be treated as household waste. Instead it shall be handed over to the applicable collection point for the recycling of electrical and electronic equipment

Twelve-month warranty

Every illuminated product and the AC adaptor are warranted for 12 months if no signs of abnormal use are present. Keep the purchase receipt and the warranty card with the serial number and purchase date to valid the warranty.

The following damages are not covered by the warranty:

Corrosion on charging connector due to moisture

Case damages due to use of any kind of solvent

Damages due abuse or not proper use.

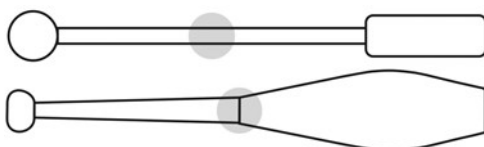


Program mode description

* Programs 1 & 5 also allows to choose desired colors to be used on following programs.

MODE	DESCRIPTION	BATTERY LIFE
1 *	Rainbow effect, slow. Choose COLOUR 1 Runs a 42 full coloured step sequence. Before to jump to next program, current colour is stored in memory as COLOUR 1	Normal
2	Colour stored in program 1 (COLOUR1) glows solid Last colour shown in program 1 was stored and glows solidl. There are 42 colors.	Normal
3	COLOUR1 + medium speed STROBE Colour selected in program 1 (COLOUR1) glows with STROBE FLASH at medium speed. There are 42 colour possibilities.	Extended
4	COLOUR 1 + fast speed STROBE Colour selected in program 1 (COLOUR1) glows with STROBE FLASH at fast speed. There are 42 colour possibilities.	Extended
5 *	Rainbow effect, slow. Select COLOUR 2 Runs a 42 full coloured step sequence. Before to jump to next program, current colour is stored in memory as COLOUR 2	Normal
6	Rainbow effect between COLOUR 1 & COLOUR 2 at med speed Colours between COLOUR1 and COLOUR2 are sequenced at medium speed.	Normal
7	Sequence COLOUR 1 & COLOUR 2 at low speed Colour1 and Colour2 are sequenced at low speed. There are more than 1500 possibilities.	Normal
8	Sequence COLOUR 1 & COLOUR 2 at medium speed Colour1 and Colour2 are sequenced at medium speed. There are more than 1500 possibilities.	Normal
9	Sequence COLOUR 1 & COLOUR 2 at high speed Colour1 and Colour2 are sequenced at low high speed. There are more than 1500 possibilities.	Normal
10	Multicolour swing sequence 1	Extended
11	Multicolour swing sequence 2	Extended
12	Club is divided in 6 different color zones. Club is divided in blue, pink, red, green and yellow solid zones.	Extended
13	8 solid colour combinations sequenced every 4 sec.	Extended
14	Rainbow effect, slow speed + STROBE + SLIDING Runs a 42 full coloured step sequence plus fast strobe flash. The visual effect is mixed with a red sliding light from one end to the other one.	Extended
15	COLOR 1 + SLIDING + STROBE Shows COLOUR1 plus a strobe flash mixed with a red sliding light from one end to the other one.	Extended
16	Slow rainbow effect, the centre color is inverted. Runs a 42 full coloured step sequence with the center inverted.	Normal
17	Sequence of 8 non conventional colors + STROBE Runs a sequence of blue, orange, light blue, emerald, yellow, violet and light green plus strobe flash. Use this program for fast and dynamic juggling scenes.	Extended
18	DEMO Program Shows program from 1 to 17, changing automatically every 15 seconds. The previously selected COLOUR 1 & 2 will be displayed . Note: while in program mode, this program is identified by blinking red.	Normal

Magnetic sensitive zone:



Frequently asked questions.

How many colours does a Kosmos illuminated product have?	KOSMOS uses RGB color LED technology combined with 8 bit RISC microprocessor to get a full set of 42 colors.
I would like to know more about the 42 colours.	Magnetic Programming technology allows to freely choose any of the 42 colors and combine it with another one. This extends the possible play combinations to over 1500. Colors can be used in 3 different flashing speeds.
Is my Kosmos illuminated product robust enough?	All of our models have been designed and tested for normal shocks during juggling play.
Do they have warranty?	Every Kosmos product has 12-month warranty from purchase date.
Do they include any accessories?	Every illuminated product set includes 1 carrying case, 1 magnet, user manual and warranty card.
What kind of batteries are used in Kosmos Malabares products?	Kosmos uses NiMh batteries with minimum "memory effect". This allows partial battery charging without compromising battery life.
How to charge them	Simply connect them to the charger. A battery charge controller is included in every Kosmos product to take care of the internal battery. The battery life is about 1000 charges.
What can I do if I lose the supplied charger?	A battery charge controller is included in every Kosmos product. This allows to use any kind of AC adaptor that fulfils the specification. See Charging chapter in user manual.
How long is the glowing time?	Between 3 and 6 hours depending on the lighting mode.
Why does my Kosmos Malabares illuminated product turn off when plugging the charger?	This feature allows to check the charging procedure is happening normally.
Why does the product turn on when unplugging the charger?	This behaviour is correct. Slide the magnet to turn it off.
I have lost the magnet. What can I do?	The products are designed to be used with any kind of strong magnet.
I can not switch off my illuminated product.	That may happen because the program mode is active. Keep the magnet close to the sensitive area until the red goes off and try again.
The product behaviour is not right.	Try charging it. The system will restart every time the product receives charge.
I can not enter programming mode on the staff	To enter program mode on the staff you must use the sensitive area that is located next to the charging connector
I can not turn on the product. It makes a red flash every time I slide the magnet.	1) Try speeding up the sliding, 2) The battery is flat. Perform a complete charge.