

CNC TOOL STORAGE SOLUTIONS

Cnc tool carts & Cabinets for all types of CNC Tool holders

CNC Tool carts | CNC Tool Holder Cabinets | Work station | Tool Scoots
Collect racks | Utility carts | CUstom Carts | Foldable Carts



Uratech USA Inc

Inquiries: Info@uratechusa.com

Website: www.uratechusa.com

Contact us to find your local distributor

Toll free : 1-800-813-0537

CNC TOOL STORAGE SOLUTIONS

CNC Tool holder cabinets



Part No: UTT - 1300 , CAT 30 - BT 30 , 105 HOLDERS CAPACITY
Part No: UTT - 1301 , CAT 40 - BT 40 , 105 HOLDERS CAPACITY
Part No: UTT - 1302 , CAT 50 - BT 50 , 72 HOLDERS CAPACITY
Part No: UTT - 1303 , HSK 40, 105 HOLDERS CAPACITY
Part No: UTT - 1304 , HSK 63, 105 HOLDERS CAPACITY
Part No: UTT - 1305 , HSK 100, 72 HOLDERS CAPACITY
Part No: UTT - 1306 , CAPTO C6, 105 HOLDERS CAPACITY

SPECIFICATION:

- Cold rolled steel , 16 Gauge steel , Powder coated
- Assembled & Ready to use
- Durable Red Nylon inserts
- Peg board holes are incorporated in the side doors (Left and Right) to organize tools
- Fork Lift Access
- Heavy duty castors can be installed (4000 lbs capacity - optional)
- Cabinet Size : 22.000" x 32.000" x 65.000"
- Weight : 225 lbs
- Front doors can be locked and secured.
- Clear Acrylic sheets installed on front doors for viewing.



Uratech USA Inc

Inquiries: Info@uratechusa.com

Website: www.uratechusa.com

Contact us to find your local distributor

Toll free : 1-800-813-0537

CNC TOOL STORAGE SOLUTIONS

CNC TOOL STORAGE SOLUTIONS

Ultra Scoot



Part No: UTT - 1400 , CAT 30 - BT 30 , 49 HOLDERS CAPACITY
Part No: UTT - 1401 , CAT 40 - BT 40 , 49 HOLDERS CAPACITY
Part No: UTT - 1402 , CAT 50 - BT 50 , 36 HOLDERS CAPACITY
Part No: UTT - 1403 , HSK 40, 49 HOLDERS CAPACITY
Part No: UTT - 1404 , HSK 63, 49 HOLDERS CAPACITY
Part No: UTT - 1405 , HSK 100, 36 HOLDERS CAPACITY
Part No: UTT - 1406 , CAPTO C6, 49 HOLDERS CAPACITY

SPECIFICATION:

- Cold rolled steel , 16 Gauge steel , Powder coated
- Assembled & Ready to use
- Durable Red Nylon inserts
- Peg board (1/8" Thick)
- Industrial Castors, load rated at 1200 lbs, 2 Swivel & 2 rigid
- Cabinet Size : 22.000" x 32.000" x 40.00" Height
- Weight: 165 lbs
- Front doors and Back doors can be locked and secured.
- Bottom and Top tray are for consumables
- Clear Acrylic sheets installed on all doors for viewing.



Uratech USA Inc

Inquiries: Info@uratechusa.com

Website: www.uratechusa.com

Contact us to find your local distributor

Toll free : 1-800-813-0537

CNC TOOL STORAGE SOLUTIONS

CNC TOOL STORAGE SOLUTIONS

CNC Tool cart - Floor model with Peg board



Part No: UTT - 900 , CAT 30 - BT 30 , 70 Holders capacity
Part No: UTT - 100 , CAT 40 - BT 40 , 70 Holders capacity
Part No: UTT - 101 , CAT 50 - BT 50 , 48 Holders capacity
Part No: UTT - 201 , HSK 40 , 70 Holders capacity
Part No: UTT - 202 , HSK 63 , 70 Holders capacity
Part No: UTT - 203 , HSK 100 , 48 Holders capacity
Part No: UTT - 910 , CAPTO C6 , 70 Holders capacity

SPECIFICATIONS :

- Steel Peg Board , 20.000 x 30.000 x 0.063 Thick , Black color - Powder coated , 6 Plastic Bins - included
- Durable red nylon inserts
- Industrial casters - 1150 lbs capacity (2 swivel with brake, 2 rigid)
- Trays - Cold rolled steel, 16 Gauge (0.063" Thick , Black Color - Powder coated)
- 2 Small trays in front for more space and tools storage , Bottom tray is for consumables
- Nylon inserted nuts to avoid loosening.
- Black Anodized Aluminum Handle
- Tool cart weight : 110 lbs
- Cart Dimensions: 20.000" X 30.000" X 37.000" (Height from floor)

Uratech USA Inc

Inquiries: Info@uratechusa.com

Website: www.uratechusa.com

Contact us to find your local distributor

Toll free : 1-800-813-0537

CNC TOOL STORAGE SOLUTIONS

CNC TOOL STORAGE SOLUTIONS

Heavy Duty CNC Tool Carts



Part No : UTT - 1900 , CAT 30 - BT 30 , 70 Holders capacity

Part No : UTT - 1901 , CAT 40 - BT 40 , 70 Holders capacity

Part No : UTT - 1902 , CAT 50 - BT 50 , 48 Holders capacity

Part No : UTT - 1903 , HSK 40 , 70 Holders capacity

Part No : UTT - 1904 , HSK 63 A, 70 Holders capacity

Part No : UTT - 1905 , HSK 100, 48 Holders capacity

Part No : UTT - 1906 , CAPTO C6 , 70 Holders capacity

SPECIFICATIONS :

- Twin cart - CNC Tool cart
- 4000 lbs Capacity
- 2 Castors Swivel with brake and 2 Rigid.
- 0.125" Thick ,Cold rolled steel, Powder coated, Blue color
- Twin cart allows the users to use one single cart for 2 machines.
- Durable Red Nylon Inserts.
- Pegboard holes on 2 sides of the to organize consumables
- Space in the bottom tray is for consumables

Uratech USA Inc

Inquiries: Info@uratechusa.com

Website: www.uratechusa.com

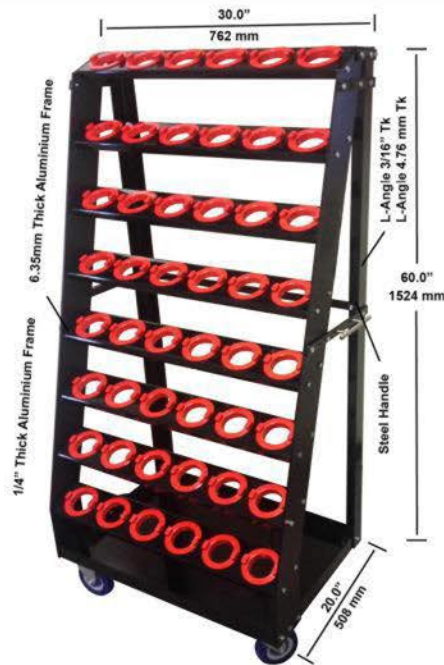
Contact us to find your local distributor

Toll free : 1-800-813-0537

CNC TOOL STORAGE SOLUTIONS

CNC TOOL STORAGE SOLUTIONS

CNC Tool cart - Ladder Model



Part No-UTT-902, CAT 30-BT 30, 56 Holders capacity

Part No-UTT-104, CAT 40-BT 40 56 Holders capacity

Part No-UTT-105, CAT 50 - BT 50, 48 Holders capacity

Part No-UTT 207, HSK 40- 56 Holders capacity

Part No-UTT 208, HSK 63- 56 Holders capacity

Part No-UTT 209, HSK 100, 48 Holders capacity

Part No: UTT 912 CAPTO - C6, 56 Holders capacity

SPECIFICATIONS :

- Cold rolled steel, 16 Gauge (0.063" . 1.6 mm)
- Trays angled at 25 Degree for convenience
- Durable red nylon inserts
- Heavy duty industrial casters (2 swivel with brake, 2 rigid)
- Blue or Black, powder coated
- Tool cart weight: 88 lbs (40 Kg)

Uratech USA Inc

Inquiries: Info@uratechusa.com

Website: www.uratechusa.com

Contact us to find your local distributor

Toll free : 1-800-813-0537

CNC TOOL STORAGE SOLUTIONS

CNC TOOL STORAGE SOLUTIONS

CNC Tool cart with Peg board: Medium Duty



Part Number: UTT-904, CAT30 - BT 30, 35 Holders capacity
Part Number: UTT-108, CAT 40 - BT 40, 35 Holders capacity
Part Number: UTT-109, CAT 50 - BT 50, 24 Holders capacity
Part Number: UTT-213, HSK 40, 35 Holders capacity
Part Number: UTT-214 HSK 63, 35 Holders capacity
Part Number: UTT-215, HSK 100, 24 Holders capacity
Part Number: UTT-914, CAPTO C6, 35 Holders capacity



SPECIFICATIONS :

- All Trays, Cold rolled steel, 16 Gauge (0.063" Thick, Black Color - Powder coated)
- 3 drawer with ball bearing slides & lockable option to secure valuables (Full lenght slide capability)
- Drawer dimension 26.000" x 12.000" (Height)
- Peg board with Plastic Bins - Durable red nylon inserts
- Black Anadized aluminum handle
- 2 front side supports and bottom trays are for consumables and to organize
- Industrial castors, load rated at 1400lbs (2 swivel with brake and 2 rigid)
- Tool cart wight: 140 lbs (63.50Kg)
- Tool cart dimension: 20.000" x 30.000" x 38.000" (Height from floor)

Uratech USA Inc

Inquiries: Info@uratechusa.com

Website: www.uratechusa.com

Contact us to find your local distributor

Toll free : 1-800-813-0537

CNC TOOL STORAGE SOLUTIONS

CNC TOOL STORAGE SOLUTIONS

CNC Tool cart - Shelf Model



Part No: UTT - 903, CAT 30-BT 30, 105 Holders capacity
Part No: UTT - 106, CAT 40-BT 40, 105 Holders capacity
Part No: UTT - 107, CAT 50-BT 50, 72 Holders capacity
Part No: UTT - 210, HSK 40, 105 Holders capacity
Part No: UTT - 211, HSK 63, 105 Holders capacity
Part No: UTT - 212, HSK 100, 72 Holders capacity
Part No: UTT - 913, CAPTO C6, 105 Holders capacity

SPECIFICATIONS:

- Cold rolled steel, 16 Gauge (0.063" .16 mm)
- Durable red nylon inserts
- Heavy duty industrial casters (2 swivel with brake, 2 rigid)
- 3/16" Thick, 1.500 X 1.500" L angle (E-coated, Black)
4.750" Thick, 38 mm X 38 mm
- Shelf type holder dimensions: 20.000" X 30.000" X 60.000"
- Blue or Black, powder coated
- Distance between trays: 13.0" (330.0 mm)
- Tool cart weight: 88 lbs (40 Kg)

Uratech USA Inc

Inquiries: Info@uratechusa.com

Website: www.uratechusa.com

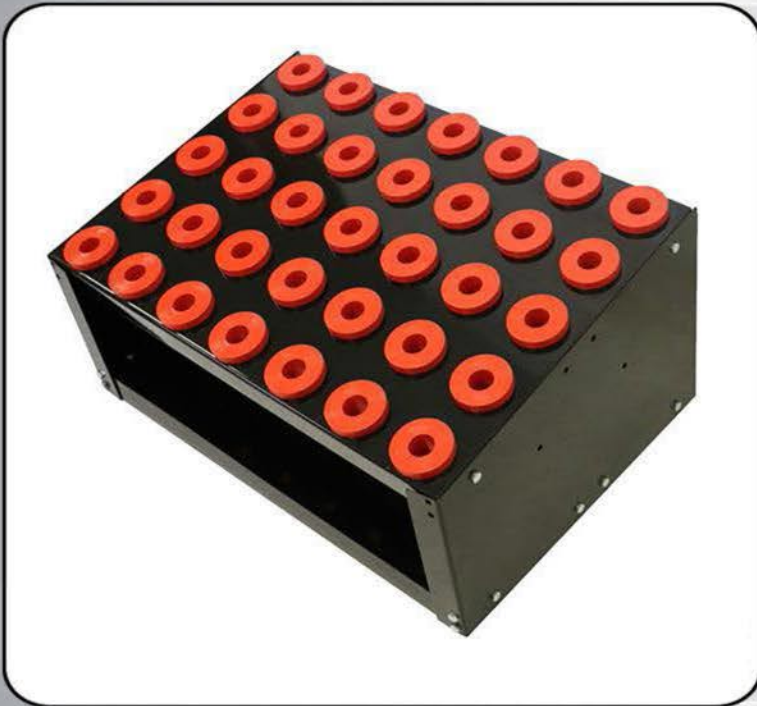
Contact us to find your local distributor

Toll free : 1-800-813-0537

CNC TOOL STORAGE SOLUTIONS

CNC TOOL STORAGE SOLUTIONS

CNC Tool cart - Bench Model



Part No: UTT - 905, CAT30 - BT 30, 35 Holders capacity

Part No: UTT - 110, CAT 40 - BT 40, 35 Holders capacity

Part No: UTT - 111, CAT 50 - BT 50, 24 Holders capacity

Part No: UTT - 216, HSK 40, 35 Holders capacity

Part No: UTT - 217, HSK 63, 35 Holders capacity

Part No: UTT - 218, HSK 100, 24 Holders capacity

Part No: UTT - 915, CAPTO C6, 35 Holders capacity

SPECIFICATIONS :

- Cold rolled steel, 16 Gauge (0.063" . 1.6 mm)
- Durable red nylon inserts
- Bottom tray is for tools, collects and measuring instruments
- Blue or Black, powder coated
- Tool cart weight: 26 lbs (12 Kg)
- Bench type holder dimensions: 20.000" x 30.000" x 12.000" (Height)
508mm x 762mm x 305mm (Height)

Uratech USA Inc

Inquiries: Info@uratechusa.com

Website: www.uratechusa.com

Contact us to find your local distributor

Toll free : 1-800-813-0537

CNC TOOL STORAGE SOLUTIONS

CNC TOOL STORAGE SOLUTIONS

CNC Tool cart - Army Scoot



Part No : UTT - 13001 , CAT 30 - BT 30 , 70 Holders capacity

Part No : UTT - 13002 , CAT 40 - BT 40 , 70 Holders capacity

Part No : UTT - 13003 , CAT 50 - BT 50 , 48 Holders capacity

Part No : UTT - 13004 , HSK 40, 70 Holders capacity

Part No : UTT - 13005 , HSK 63 A, 70 Holders capacity

Part No : UTT - 13006 , HSK 100, 48 Holders capacity

Part No : UTT - 13007 , CAPTO C6 , 70 Holders capacity

Specifications :

Army Scoot , CNC Tool cart

Trays - Cold rolled steel, 16 Gauge (0.063" Thick, Black Color - Powder coated)

Durable red nylon inserts

Industrial casters - 1400 lbs capacity (2 swivels with brake, 2 rigid)

Small tray in front for more space and tools storage

The bottom tray is for consumables.

Black Anodized Aluminum Handle

Uratech USA Inc

Inquiries: Info@uratechusa.com

Website: www.uratechusa.com

Contact us to find your local distributor

Toll free : 1-800-813-0537

CNC TOOL STORAGE SOLUTIONS

CNC TOOL STORAGE SOLUTIONS

CNC Tool cart - Super Scoot



Part No : UTT - 325 , CAT 30 - BT 30 , 35 Holders capacity

Part No : UTT - 326 , CAT 40 - BT 40 , 35 Holders capacity

Part No : UTT - 327 , CAT 50 - BT 50 , 24 Holders capacity

Part No : UTT - 328 , HSK 40, 35 Holders capacity

Part No : UTT - 329 , HSK 63 A, 35 Holders capacity

Part No : UTT - 330 , HSK 100, 24 Holders capacity

Part No : UTT - 331 , CAPTD C6 , 35 Holders capacity

Specifications :

Super Scoot, CNC Tool cart

Trays - Cold rolled steel, 16 Gauge (0.063" Thick, Black Color - Powder coated)

Durable red nylon inserts

Industrial casters - 1400 lbs capacity (2 swivels with brake, 2 rigid)

The bottom and the Middle tray is for consumables.

Black Anodized Aluminum Handle

Uratech USA Inc

Inquiries: Info@uratechusa.com

Website: www.uratechusa.com

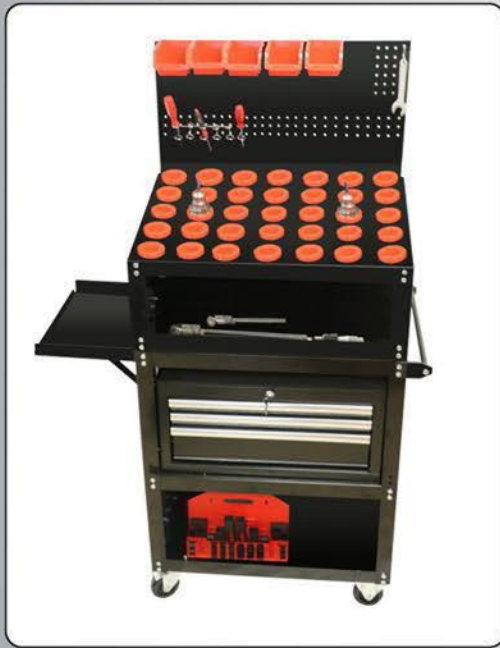
Contact us to find your local distributor

Toll free : 1-800-813-0537

CNC TOOL STORAGE SOLUTIONS

CNC TOOL STORAGE SOLUTIONS

CNC Mill Scoot



SPECIFICATION:

- Specify type of CNC Holder when ordering
(Ex : CAT 40 ,CAT 50 & etc.,)
- Steel Peg board , 20.0" x 30.0" x 0.063" Thick, Steel, powder coated
- Bench Type CNC Organizer with Nylon Inserts

- All Steel , 16 Gauge (0.063" Thick , Black Color - Powder coated)
- 3 Drawer with Ball bearing slides and lockable option to secure valuables
- Drawer dimension : 26.5 "Len x 18.0" wide x 12.0" (Height)Top &
Middle Drawer clear space : 1.500" x 15.000" x 22.0"
Bottom Drawer clear space: 4.000" x 15.000" x 22.0"
- Each Drawer Holds 75 lbs , Keyed Internal Locking System
- Small tray in the front and bottom tray with the wheels are for storage and consumables

Uratech USA Inc

Inquiries: Info@uratechusa.com

Website: www.uratechusa.com

Contact us to find your local distributor

Toll free : 1-800-813-0537

CNC TOOL STORAGE SOLUTIONS

CNC TOOL STORAGE SOLUTIONS

Aerospace carts & Custom carts



SPECIFICATIONS:

- Uratech can be able to design and manufacture custom carts to suit aerospace parts
- Third party certification can be provided for structural design and welding
- Contact us today and our design team will come and see your staff, today

Uratech USA Inc

Inquiries: Info@uratechusa.com

Website: www.uratechusa.com

Contact us to find your local distributor

Toll free : 1-800-813-0537

CNC TOOL STORAGE SOLUTIONS

CNC TOOL STORAGE SOLUTIONS

CNC Gun Drill cart



SPECIFICATION:

- Gun Drill & Storage cart for Vertical long drills
- Trays ,Cold Rolled Steel (16 gauge,0.063"Thick)
Black color - Powder coated
- Cart Dimension: 20.000"X 32.000"X 38.000" (Height from Floor)
- Cart Capacity: Be able to store 104 Drill Bits (32.0" - 72.0" long)
- Able to store from 3/16"-2.000" diameter Drill Bits
- Able to store 2 Drills on each size in the cart up to 2.000" diameter (All fractional sizes and mm)

- Cart capacity 1600 lbs
- Able to organize and secure drill bits vertically in the cart and be able to move
- Heavy Duty Industrial Caster (2 rigid & 2 Swivel with brake)
- Black Anodized aluminum handle
- Trays are powder coated(Black or Blue Color)
- Top Tray and bottom tray have same drill sizes so that drill can be stored vertically
- 2 small trays in the front are for storage and consumables

Uratech USA Inc

Inquiries: Info@uratechusa.com

Website: www.uratechusa.com

Contact us to find your local distributor

Toll free : 1-800-813-0537

CNC TOOL STORAGE SOLUTIONS

CNC TOOL STORAGE SOLUTIONS

Collect Racks



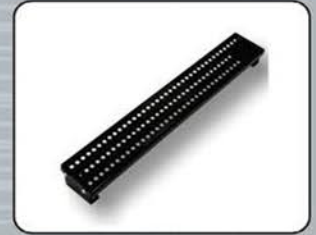
DA 100 SERIES
Part number: UTT - 457
69 Collets capacity



DA 180 SERIES
Part number: UTT - 458
63 Collets capacity



DA 200 SERIES
Part number: UTT - 459
115 Collets capacity



DA 300 SERIES
Part number: UTT - 460
115 Collets capacity



ER - DR - RD - 32 SERIES
Part number: UTT - 454
34 Collets capacity



ER - DR - RD - 40 SERIES
Part number: UTT - 455
30 Collets capacity



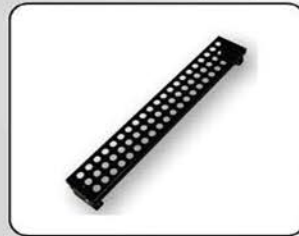
ER - DR - RD - 50 SERIES
Part number: UTT - 456
22 Collets capacity



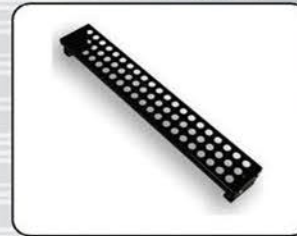
ER - DR - RD - 11 SERIES
Part number: UTT - 450
115 Collets capacity



ER - DR - RD - 16 SERIES
Part number: UTT - 451
69 Collets capacity



ER - DR - RD - 20 SERIES
Part number: UTT - 452
69 Collets capacity



ER - DR - RD - 25 SERIES
Part number: UTT - 453
63 Collets capacity



TG - 75 SERIES
Part number: UTT - 461
34 Collets capacity



TG - 100 SERIES
Part number: UTT - 462
34 Collets capacity



TG - 150 SERIES
Part number: UTT - 463
22 Collets capacity

Uratech USA Inc

Inquiries: Info@uratechusa.com

Website: www.uratechusa.com

Contact us to find your local distributor

Toll free : 1-800-813-0537

CNC TOOL STORAGE SOLUTIONS

CNC TOOL STORAGE SOLUTIONS

Utility Carts



2 Shelf welded cart
Part no : UTT - 23002



5 shelf Welded cart
Part no : UTT - 23003



2 shelf utility cart
Part no : UTT - 23004



3 shelf utility cart
Part no : UTT - 23005



Utility cart with Lockable Drawer
Part no : UTT - 23006



Utility cart with Bins
Part no : UTT - 23007



Bar Racks - Organizer
Part no : UTT - 23008



Pipe and Bar Rack
Part no : UTT - 23010



Low profile shop cart
Part no : UTT - 23014

Uratech USA Inc

Inquiries: Info@uratechusa.com

Website: www.uratechusa.com

Contact us to find your local distributor

Toll free : 1-800-813-0537