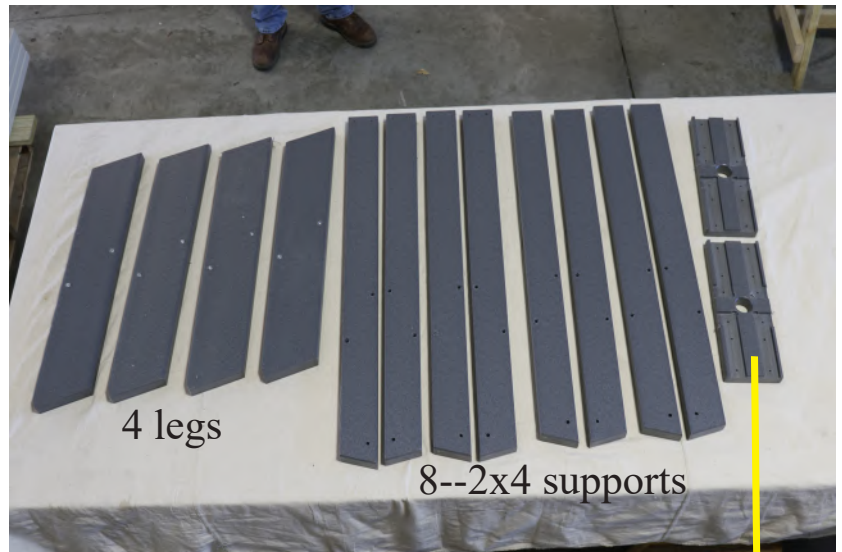


POLY OCTAGON TABLE



ASSEMBLY MANUAL

Parts List



2 support connectors

Tools Required For The Job



5/32" Hex Key
(included)



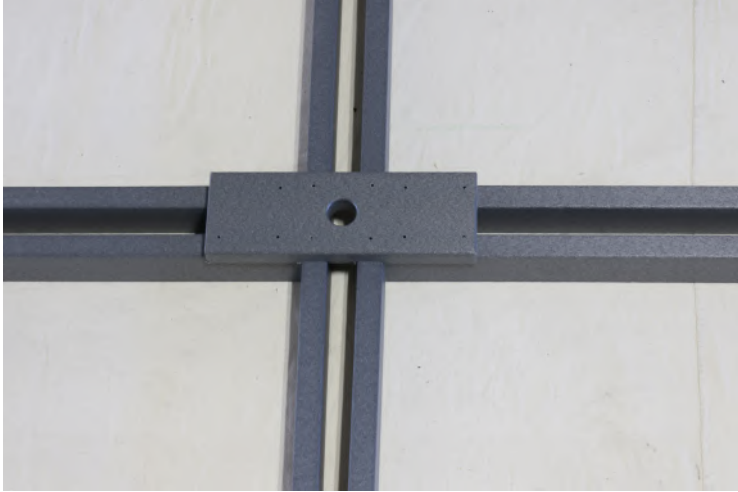
#2 square drive tip
(not included)



1/4" wrench
(not included)

*NOTE: This Hex Key is used to tighten all the screws used in the assembly process.

Step:1



Configuration of assembled 2x4 supports should be as pictured.

Place one support connector on center to join four corners.

Be sure all long points are turned up.

Step:2



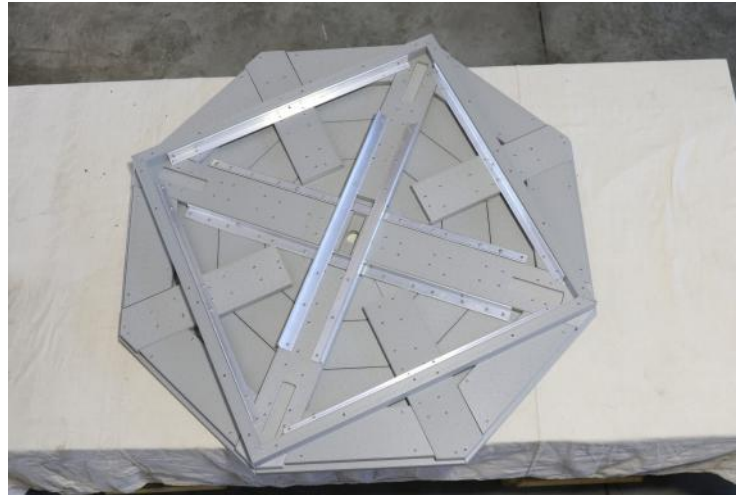
Fasten using 2 1/2" screws.

Step:3



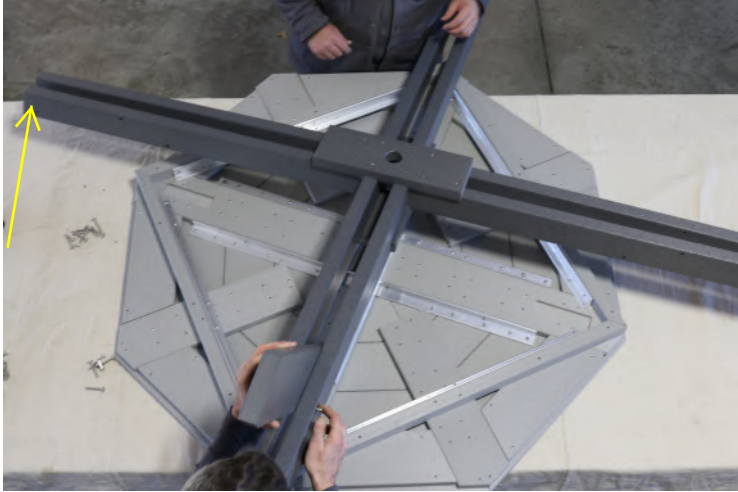
Flip frame assembly and fasten one support connector on bottom side, repeating step 3.

Step:4



Place table top on clean, smooth surface. Any dirt on the surface can easily scratch the table top.

Step:5



Place 2x4 support assembly on table top with long point on 2x4's down.

Step:6



You are now ready to fasten legs to support assembly.
Fasten using 2" bolts into insert nuts.
Only finger tighten at this point.

Step:7



Insert two 2" bolts on both sides of table leg (insert nuts are pre-set into legs).

Step:8



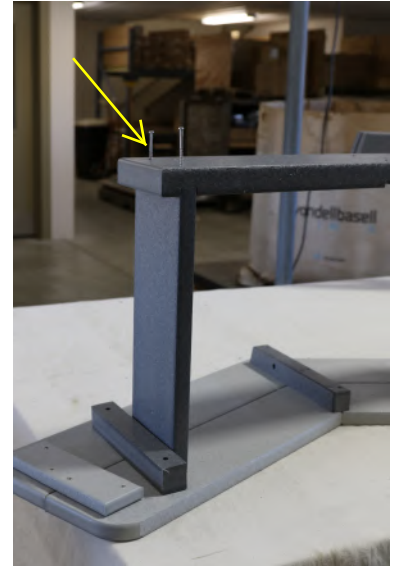
Repeat step 7 on opposite side.

Step:9



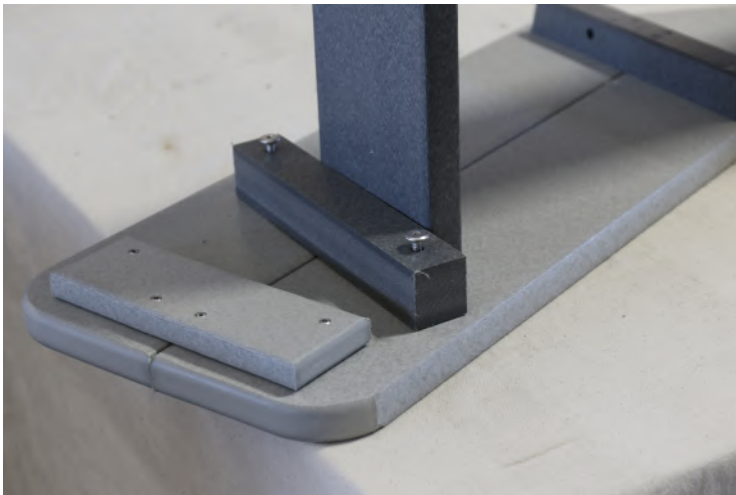
Follow steps 10-16 for seat assembly instructions. There will be four seat assemblies.

Step:10



Begin by fastening at this point using 2 1/2" screws.
Repeat on opposite side.

Step:11



Then fasten at this point using ??? bolts into insert nuts. Only finger tighten at this point.
Repeat on opposite side.

Step:12



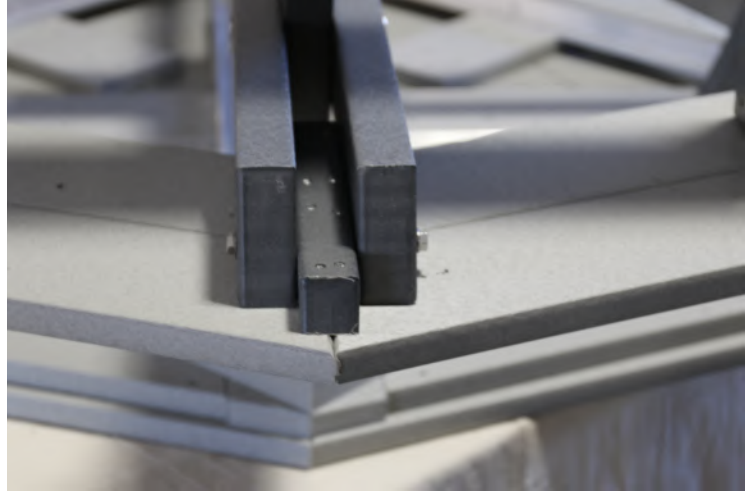
Place seat assembly on leg support assembly.

Step:13



Slide seat assembly towards center of table until this is flush.

Step:14



Align these holes then fasten using 5" hex bolt, washers, and flange nut.

Step:15



Fasten at this point using 2 1/2" screws.

Step:16



Tighten bolts that were finger tightened.

Step:17

Repeat steps 12-18 at four corners to complete seat assembly.

Step:18



Fasten at this point using 2" bolt and flange nut.
Repeat at four corners, then tighten.

Step:19



Congratulations! Your assembly is now complete.
Your table should appear like this when finished.