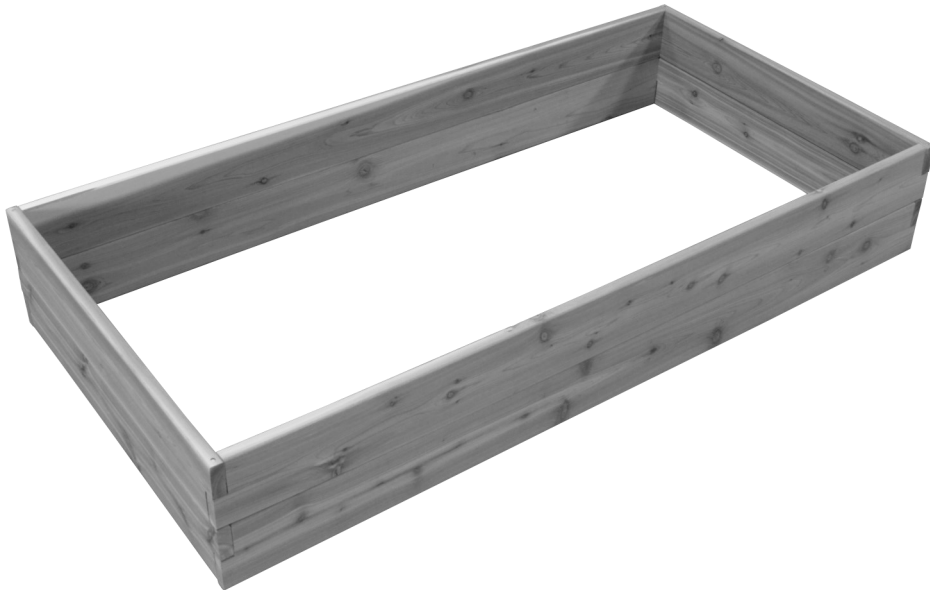




*Assembly Instructions*

**790C**

**Cedar Double Layer  
Raised Garden Bed**



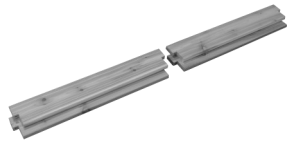
*Thank you for choosing **A&L Furniture Co.***

*We hope that this piece brings you many years of enjoyment!*

For help with assembling your furniture,  
or if you have missing hardware, please email us at  
[help@aandlfurniture.com](mailto:help@aandlfurniture.com) or call us at 866-896-5747

**PARTS** (included)

Ⓐ End Boards (4)

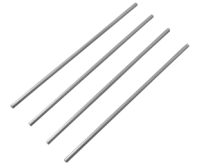


Ⓑ Side Boards (4)



**HARDWARE** (included)

Aluminum Rods (4)



**TOOLS NEEDED**

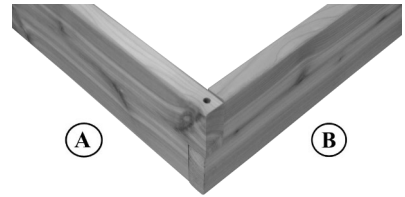
Hammer (optional)

**STEP 1**

Prepare a level area for installing the raised bed (approx. 4' x 7').

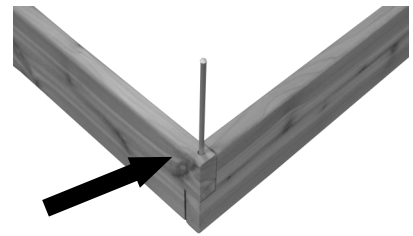
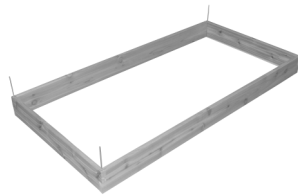
**STEP 2**

Lay out 2 end & 2 side (A & B) overlapping the corners as shown.



**STEP 3**

Insert aluminum rods into predrilled holes in all four corners.



**STEP 4**

Install 2nd layer, sliding 2 side boards (B) over rods as shown.



**STEP 5**

Install 2 end boards (A) and pound in rods flush with top of boards.

