

Adirondack Swivel Chair

Bar Height & Counter Height

ASSEMBLY MANUAL



PATIOVA.COM

610-857-1359

6649 North Moscow Rd
Parkesburg, PA 19365



Thank you for your Patiova Furniture Purchase.

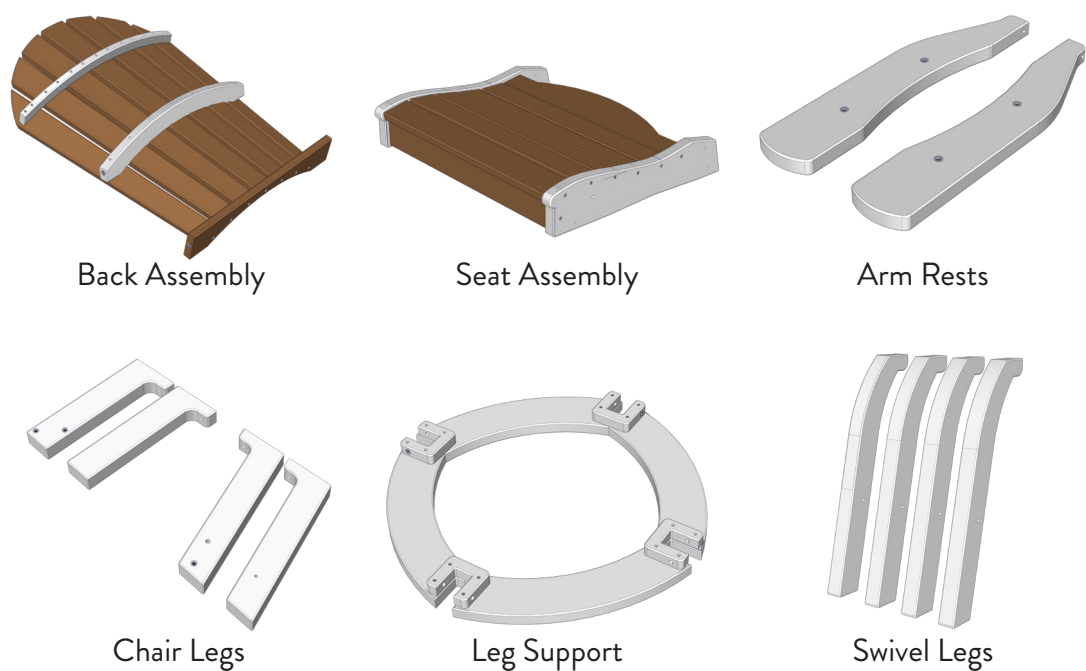
We are excited for the great times and memories you will share while enjoying your new Patiova furniture.

Let's gets started on the assembly!

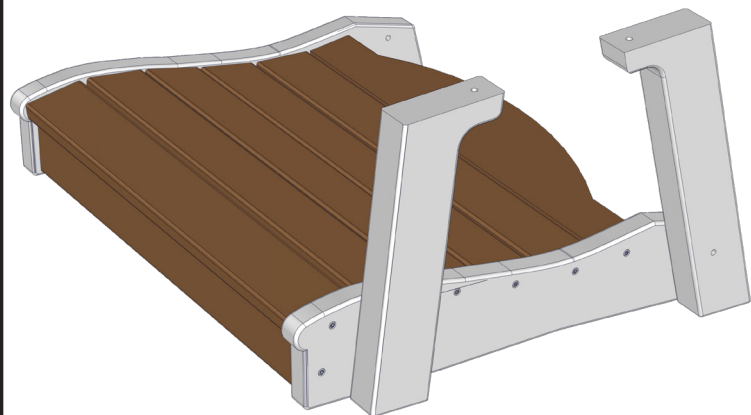
This manual is designed to simplify the assembly process with step-by-step instructions and pictures to help along the way.

We are confident that you will be happy with the ease of the assembly process.

Parts List

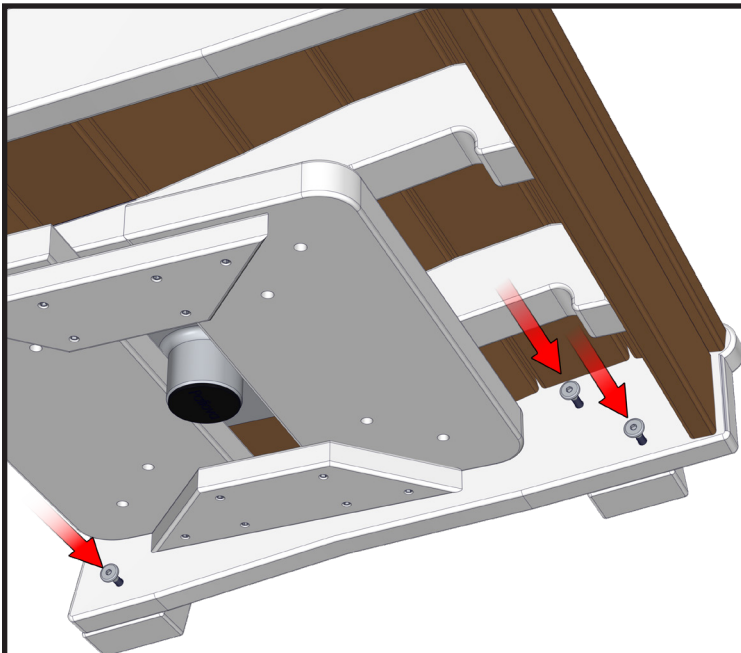


Description	QTY
Seat Assembly	1
Back Assembly	1
Arm Rest	2
Chair Legs	4
Swivel Base	1
Leg Support	1
Swivel Legs	4
3" Bolts	2
3 1/2" Bolts	4
2 1/4" Bolts	4
2" Bolts	2
1 1/2" Bolts	10



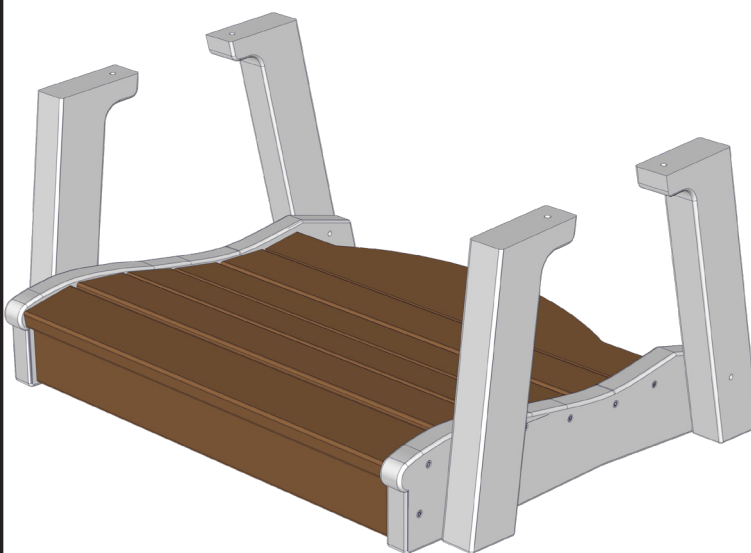
Step 1.

Locate the seat assembly and two chair legs.
The short chair leg with two insert nuts goes in the front and the long chair leg with one insert nut goes in the back.



Step 2.

Fasten the chair legs to the seat assembly using three 1 1/2" bolts.
Only hand tighten all bolts for now.



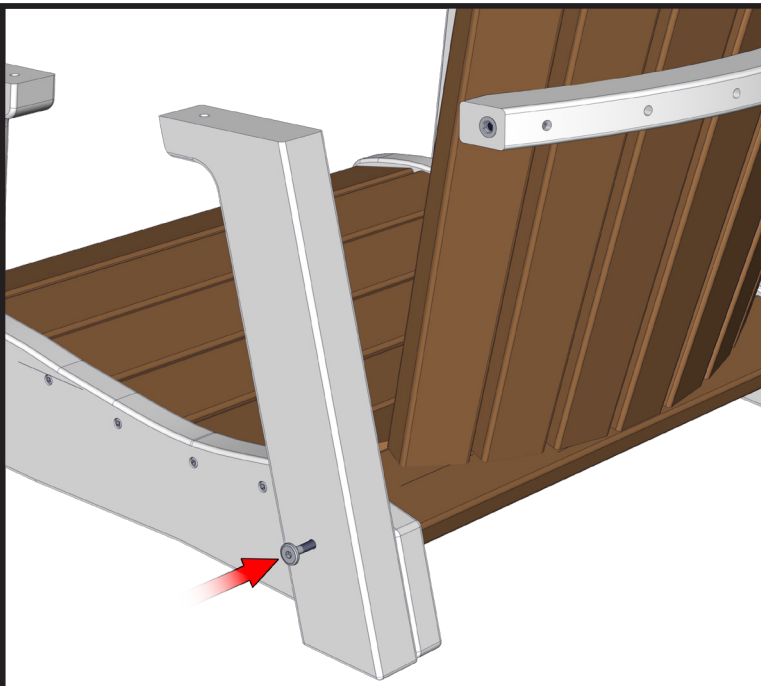
Step 3.

Repeat the last two steps to install the other chair legs.



Step 4.

Place the back assembly in position on the seat assembly.



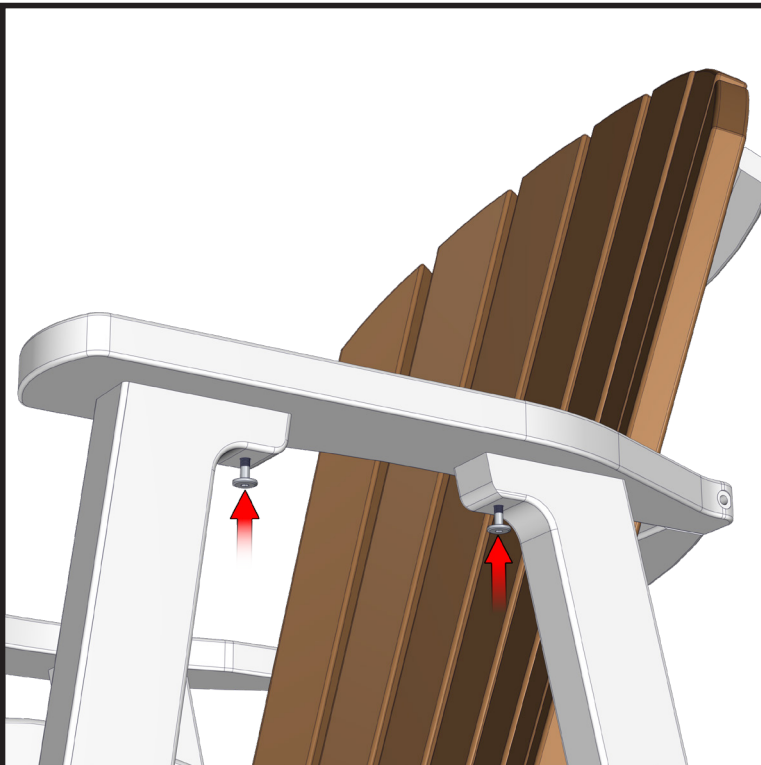
Step 5.

Fasten the back assembly using 3" bolts through the pre-drilled holes in the chair leg.



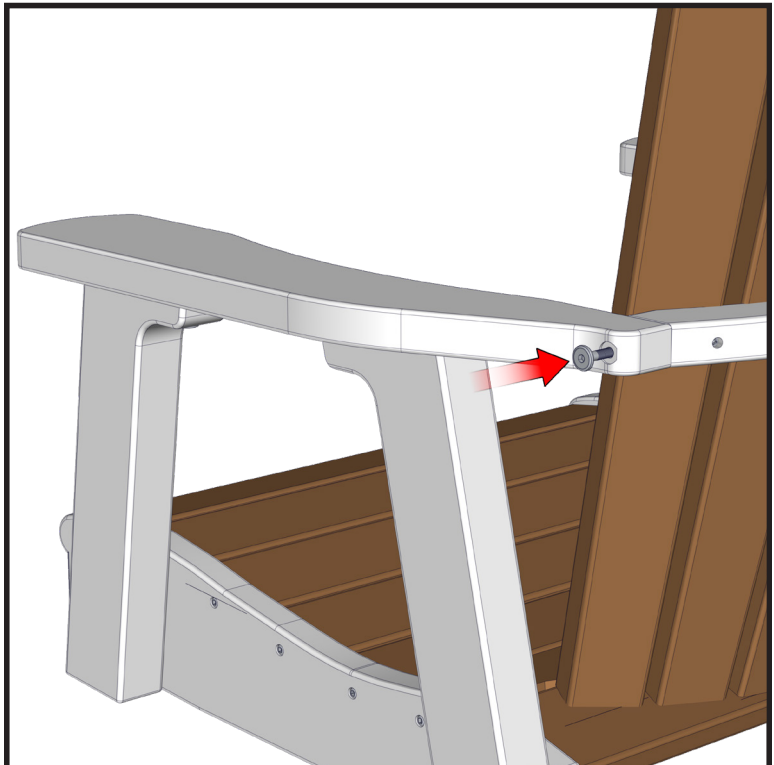
Step 6.

Place the arm rests in position on top of the chair legs.



Step 7.

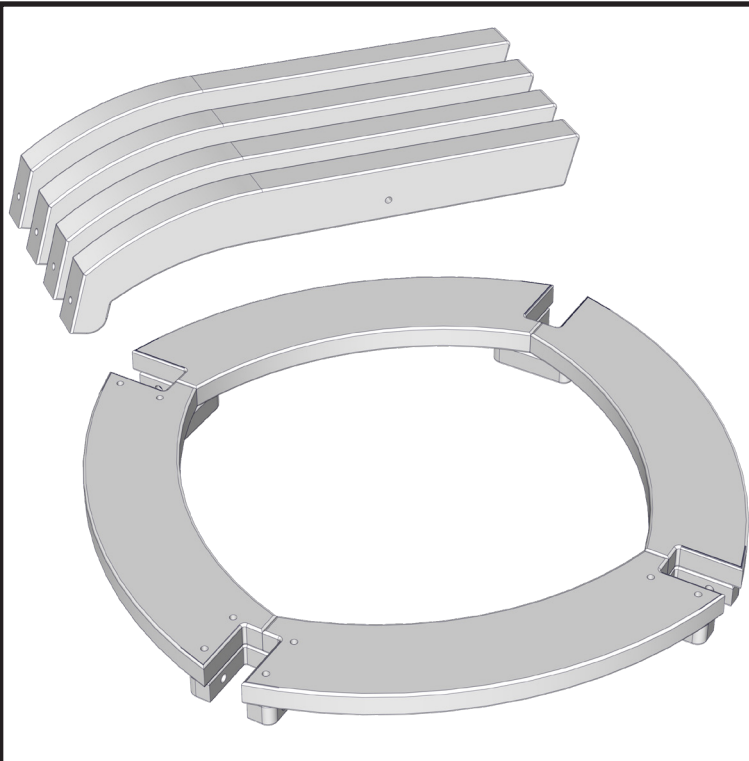
Use 1 1/2" bolts through the pre-drilled holes in the chair legs to fasten the arm rests.



Step 8.

Fasten the arm rests to the back assembly using 2" bolts.

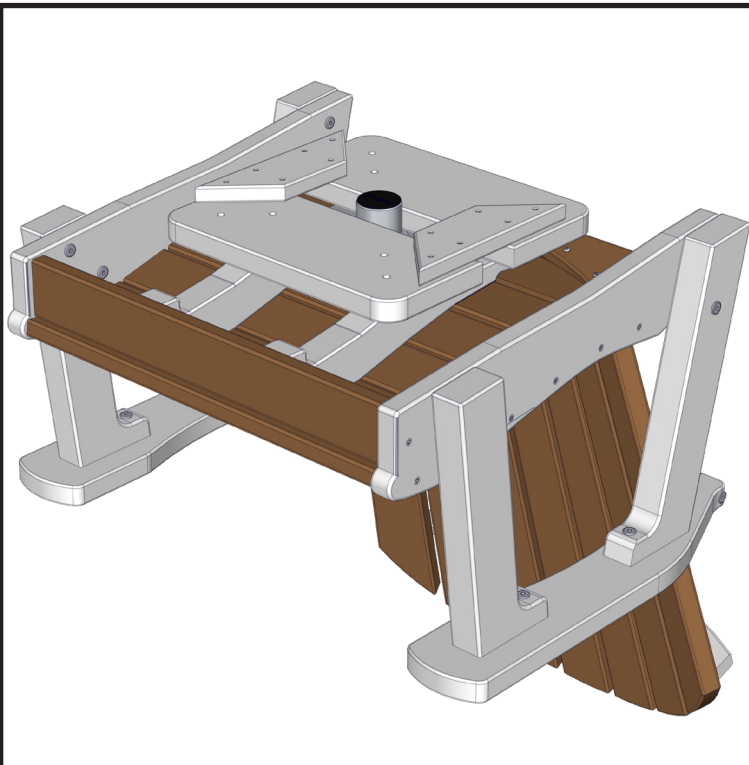
At this point you can tighten all the bolts on the chair.



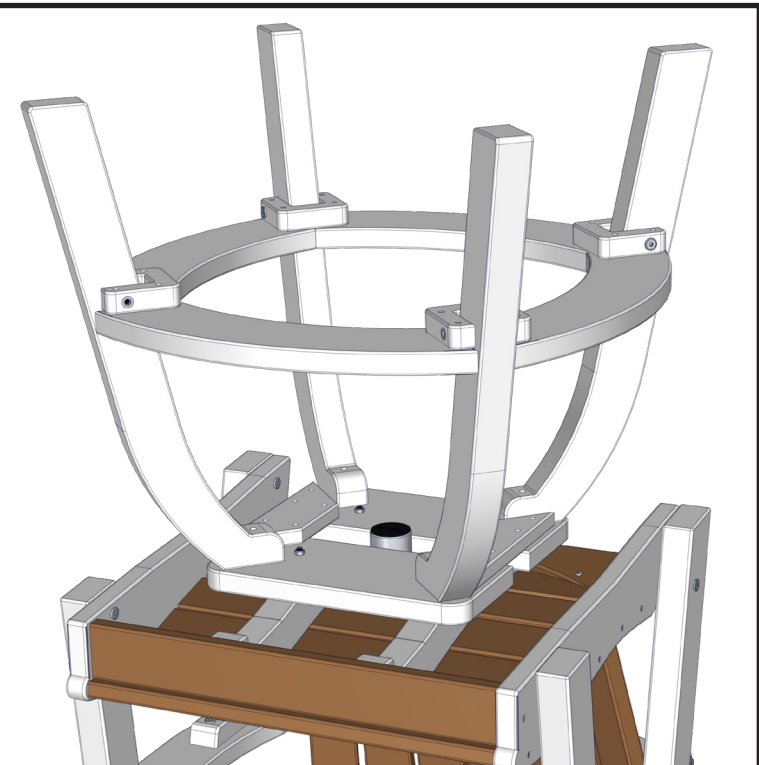
Step 9.
Locate the leg support assembly and the four swivel legs.



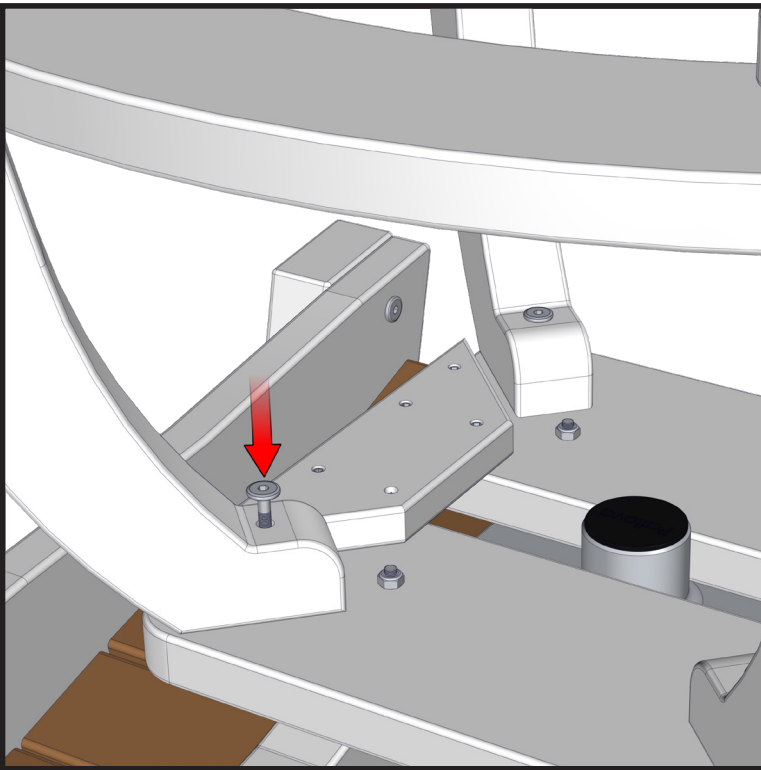
Step 10.
Place the legs in the support assembly as shown above then fasten each leg with a 3 1/2" bolt.



Step 11.
Place the seat assembly upside down to install the base.



Step 12.
Place the leg assembly in position on the swivel base.



Step 13.
Fasten the legs to the swivel base using four 2 ¼" bolts.



Completed Chair