

# BALCONY & PUB ASSEMBLY INSTRUCTIONS



(717) 354-8998 • (877) 560-5966  
New Holland, PA

## 30" Table (*Dining, Counter Height & Pub*)

#730D Bistro Table, #730C Small Round Table, #730B Pub Table



### Tools Required

- Hammer
- #2 Square Head Bit
- Power Drill
- 7/16" Socket or 7/16 wrench

### Included Hardware

**A**  20 2 1/2" Screws

### Instructions:

1. Unpack items from box(es). Be sure to match any numbers & letters that you may find on the pieces.
2. Lay the table top face down on a protected surface. Place the first leg flush with the short point of the cross piece. Fasten using 2 (A) 2 1/2" screws. Repeat on the other three legs. (Illustration 2)
3. To install the bottom shelf, align the boards so they run the same direction as the boards in the tabletop. Position the side of the legs 2" from the nearest joint in the shelf boards. (Illustration 3)
4. Fasten each brace to the shelf with 1 (A) 2 1/2" screw. Then fasten the legs to the shelf with 2 (A) 2 1/2" screws in each leg. (Illustration 4)



Illustration 2

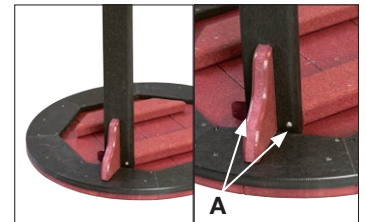


Illustration 3

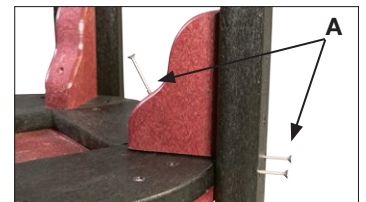


Illustration 4