



125
Snow
White



125
True
Red



125
Crystal
Blue



125
Snow
White



125
Crystal
Blue

**125
Lace
Whimsy Dress -
Snow White, True
Red or Crystal Blue -**
 Lovely glitter lace dress with sweetheart neckline, pretty back with spaghetti strap details and a double layer skirt with a lace top skirt. Lined in lycra.
 Sizes: Youth
 6-8, 8-10, 10-12,
 12-14

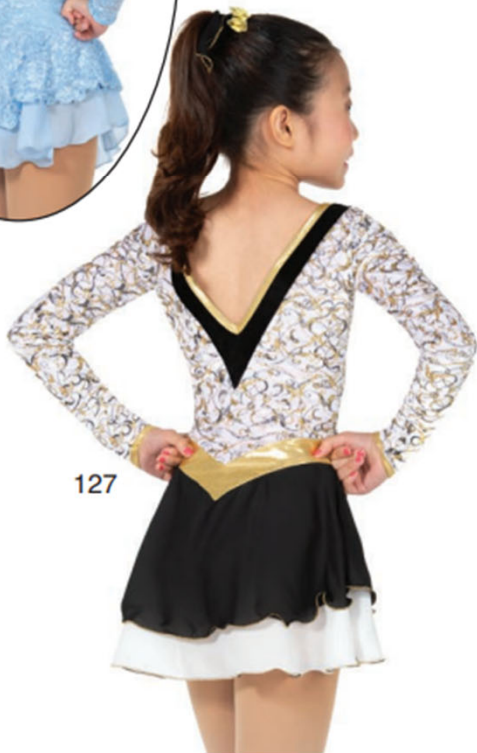


126



126

**126
Canasta
Dress - Classic
red, black and white
dress drizzled in gold
and black glitter and
accented with black
shimmer velvet banding
and a triple layer skirt
edged in gold. Sizes:
Youth 6-8, 8-10,
10-12, 12-14**



127

159.-



136



137
Jet
Black



137
Soft
Iris

137 Opera Gloves Dress - Soft Iris, Jet Black or Willow Green - This elegant dress features a halter style look with long, lace finger point sleeves for a polished design. The back is accented by a crystal cluster at the center of the bow and the georgette skirt is edged in silver. Lined. Sizes: Youth 6-8, 8-10, 10-12, 12-14 - Adult S



137
Willow
Green



137
Soft
Iris



137
Jet
Black



137
Willow
Green

165.-



12
Navy
Blue

12
Pine
Green

12
Navy
Blue

12
Pine
Green

12 Vignette Dresses - Navy Blue or Pine Green - Traditionally styled glitter velvet dresses with long mesh sleeves, a matching georgette skirt edged in silver and a crystal accented dropped marquis keyhole back with a pair of crossed straps. Sizes: Youth 12-14 - Adult Small, Medium, Large

179.-

175.-



31

31 Art Nouveau Dress - A little bit Art Deco, a little bit glam, a little bit edgy; this black velvet dress features elegant silver and gold glitter swirls and a series of cutouts along the front and back necklines and short sleeves with keyhole accents. Sizes: Youth 12-14 - Adult Small, Medium, Large



32

32 Saxony Blues Dress - Crushed velvet dress with flared sheer mesh sleeves and scrolling golden glitter trim outlining the shaped front and keyhole back and accenting the high neck. A scattering of gold crystals and gold edging on the chiffon and georgette skirt adds polish. Sizes: Youth 12-14 - Adult Small, Medium, Large

179.-



31



32

16

72



72 Whisperswirl Dress -

Snow white velvet dress with swirling silver and aqua glitter, shimmer mesh flute style sleeves, a classic style back keyhole and a double layer skirt of shimmer mesh over georgette that dips lower at the back. Lined. Sizes: Youth 12-14 - Adult Small, Medium, Large

73



73



72



73 Tinged with Turquoise Dress -

The tulip hem georgette skirt that shades from black at the waist to turquoise at the hem plays up the blue over black glitter of the velvet bodice and shimmer mesh sleeves. Cut-out shaping at the front and back and finger points on the sleeves add extra finesse. Sizes: Youth 12-14 - Adult Small, Medium, Large

179.-





18
Silver
Dawn

18
Mist
Blue

18
First
Blush

18 Daybreak Dress - Silver Dawn, Mist Blue or First Blush - Lovely glitter lace dresses with a lined V-shape front and a high neck with a back zipper. Long sheer mesh sleeves accented with sparkling crystals and a double skirt of lace over matching georgette. Lined. Sizes: Youth 12-14 - Adult Small, Medium, Large



18
Silver
Dawn

18
Mist
Blue

18
First
Blush

239.-



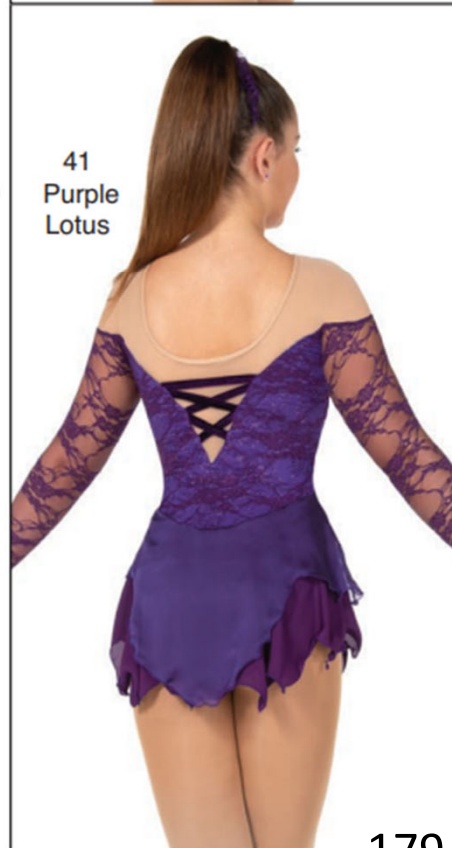
41
Blue
Belle

41
Blue
Belle

**41
Botanical
Lace Dress -
Blue Belle or Pur-
ple Lotus** - Flatteringly
 styled dress with an off-the-
 shoulder cut, long lacy
 sleeves with finger points
 and a double layer georgette
 skirt with an attractive tulip
 hem edge. The body is lined
 in a glitter knit for a bit of
 sparkle. Lined. Sizes:
 Youth 10-12, 12-14 -
 Adult Small,
 Medium,
 Large



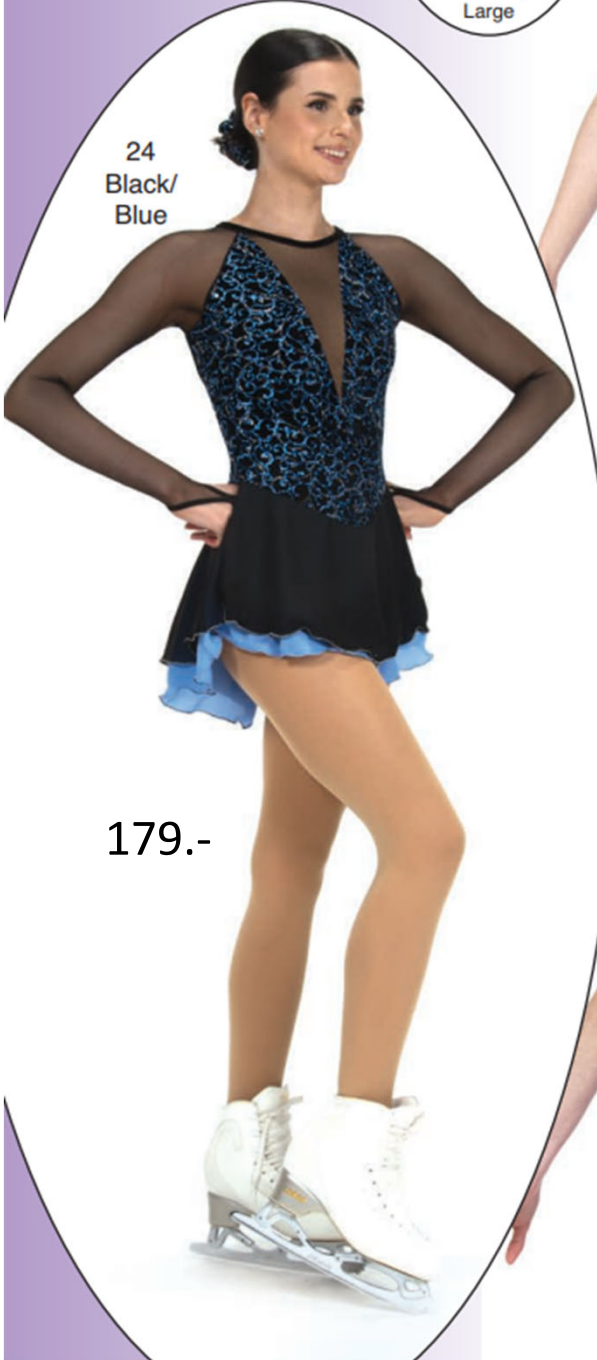
41
Purple
Lotus



41
Purple
Lotus

179.-

**25
 Clematis
 Dress - Purple
 Petal or Blue Mist**
 - Rich velvet dresses
 with open trellis style
 backs, intricate scrolls
 of glitter and dip-dyed
 georgette skirts.
 Sizes: Youth 12-14 -
 Adult Small,
 Medium,
 Large



175.-



114 Dash of Red Dance Dress - Black lace dance dress with long sleeves, finger points, a back keyhole and hints of red in the underskirt and back spaghetti straps. The black georgette top skirt is slit at one thigh to show off the red underskirt. Lined in black lycra for a comfortable fit. Sizes: Youth 12-14 - Adult S, M, L, XL

115 Blue Cascade Dance Dress - This dress features a shaded blue glitter lace that blends to white at the waist and a double georgette skirt edged in silver with a tulip hem top skirt. Lined. Sizes: Youth 12-14 - Adult S, M, L

115

114

115

116

116

116 Frost Fade Dance Dress - Frosty blue lace is layered over sparkling sequins and styled with a sweetheart front, lacy cap sleeves, a square back and a flowy georgette skirt that fades from blue at the waist to white at the hem. Lined. Sizes: Youth 12-14 - Adult S, M, L

179.-

120 Ice Rhumba Dress -

Stylish square neckline dress in an icy wedgewood blue shimmer velvet with long mesh sleeves, finger points and a matching flowy georgette skirt. A crystal accent on the back strap and a collection of crystals along the front neckline add sparkle. Lined.
 Sizes: Youth 10-12, 12-14 - Adult Small, Medium, Large



120



119 Purple Pearl

Dance Dress - This is a lovely dress with a shaped front neckline and low back crossed with slim straps accented by sparkling crystals. Single layer dance length georgette skirt.
 Sizes: Youth 10-12, 12-14 - Adult Small, Medium, Large



119

121 Dance of the Diamonds

Dress - Diamonds are a skaters best friend ... in this classy black dress dainty diamond glitter is played up with a glitter mesh diamond at the front and a diamond keyhole at the back. The sawtooth skirt hem is edged in gold and the back straps add extra charm. Sizes: Youth 12-14 - Adult Small, Medium, Large, XL



121

Jerry's Dance Dresses



120



121

179.-

175.-



74

74 Dramatic Arts Dress - The deepest, darkest shade of port is the foundation for this bewitching style. Long flared sleeves of burnout mesh are enhanced by the layered skirt and locket style front keyhole with a crystal accent, and subtle silver glitter on the slinky bodice adds a magical bit of glimmer. Lined. Sizes: Youth 12-14 - Adult Small, Medium, Large



75

75 Swansea Dress - Sequins line the lacy bodice of this sparkling blue dress, and the wavy chiffon flutter sleeves and side split layered skirt add feminine charm. V-neck front and dipped back with accent straps. Lined. Sizes: Youth 12-14 - Adult Small, Medium, Large



74



75

179.-

175.-

42 Chesterton Dress - Jet Black or Deep Purple - Classically styled and sophisticated, this design features a shapely sweetheart front and low back with a crystal accented bow detail, plus long shimmer mesh sleeves with finger points. A glitter velvet neck and a georgette skirt hemmed in metallic thread completes the look. Sizes: Youth 10-12, 12-14 - Adult Small, Medium, Large, XL



42
Jet
Black

42
Jet
Black



42
Deep
Purple



42
Deep
Purple

179.-

26 Astral Lace Dress - Red Star or Meteor Blue - Long lacy sleeves with finger points and a cavalcade of stary crystals accent these lycra dresses. Silver edging on the skirt accents the slit front top skirt. Lined. Sizes: Youth 12-14 - Adult Small, Medium, Large



26
Red
Star



26
Meteor
Blue



27 Crystal Fanfare Dress - Gorgeous black velvet dress with an asymmetrical front design and high neck trimmed with silvery glitter accented by a fan of sparkling crystals. Long mesh sleeves with finger points, a back clip and a slanted overlapping georgette skirt add finesse. Sizes: Youth 12-14 - Adult Small, Medium, Large, XL




27



27



26
Red
Star

Crystal

Accents

189.-



26
Red
Star

26 Astral Lace Dress - Red Star or Meteor Blue - Long lacy sleeves with finger points and a cavalcade of stary crystals accent these lycra dresses. Silver edging on the skirt accents the slit front top skirt. Lined. Sizes: Youth 12-14 - Adult Small, Medium, Large, XL



28
Black/
Blue



28
Black/
Blue



28
Black/
Red



28
Black/
Red

28 Swirletta Dresses - Black/Blue or Black/Red - Classic style dresses with a high neck and bodice in glitter velvet and long sheer mesh sleeves with finger points. Double layer georgette skirt edged in silver and a back zipper. Sizes: Youth 12-14 - Adult Small, Medium, Large, XL

14

179.-



54



55



56

54 Pendant Dress - Black velvet dress with sheer flocked velvet sleeves, finger points, a double layer princess style skirt edged in silver and a crystal teardrop pendant. Sizes: Youth 12-14 - Adult Small, Medium, Large, XL

55 Wine to the Nines Dress - Wine glitter velvet dress with long mesh sleeves, front strap detailing, crystal accents at the back and a double layer skirt. Sizes: Youth 12-14 - Adult S, M, L

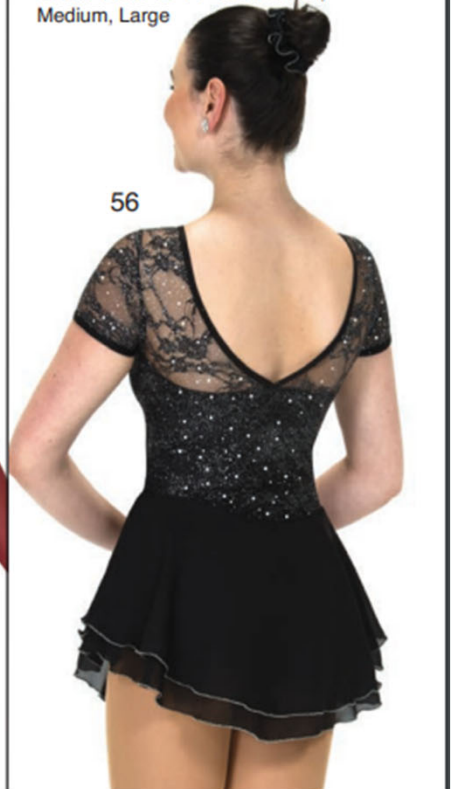
56 Lace Perfecta Dress - Glitter lace dress with dainty cap sleeves, a sweetheart front and a double georgette skirt. Lined in black lycra. Sizes: Youth 12-14 - Adult Small, Medium, Large



54



55



56

179.-



76 Blackened Bronze Dress -
 A dress with eye-catching details from the Tudor-inspired window pane straps on the diamond shaped back, to the high glitter neck, the long finger point sleeves in gold shimmer mesh and the layered metallic edged handkerchief skirt. The skirt hits mid thigh at the front and fall to just above the knee at the back. Lined front. Sizes: Youth 12-14 - Adult Small, Medium, Large

77 Glitzy Ruby Ritzzy Dress - Put on your black gloves and skate like a muse in this gorgeous red velvet dress with jet and copper glitter swirls. Velvet trimmed front V-neck, V-shape back, glove style sleeves and a double georgette skirt of ruby red over black that echoes the banding of the bodice. Lined front. Sizes: Youth 12-14 - Adult Small, Medium, Large

179.-



16 No Time to Fall Dress - Sleek and slim black slinky dress with sheer cap sleeves, a high neck with back zipper and crescent shaped cutouts at the sides outlined in silver glitter. Maybe not a licence to kill, but definitely a licence to look killer. Lined.
Sizes: Youth 12-14 - Adult Small, Medium, Large



199.-

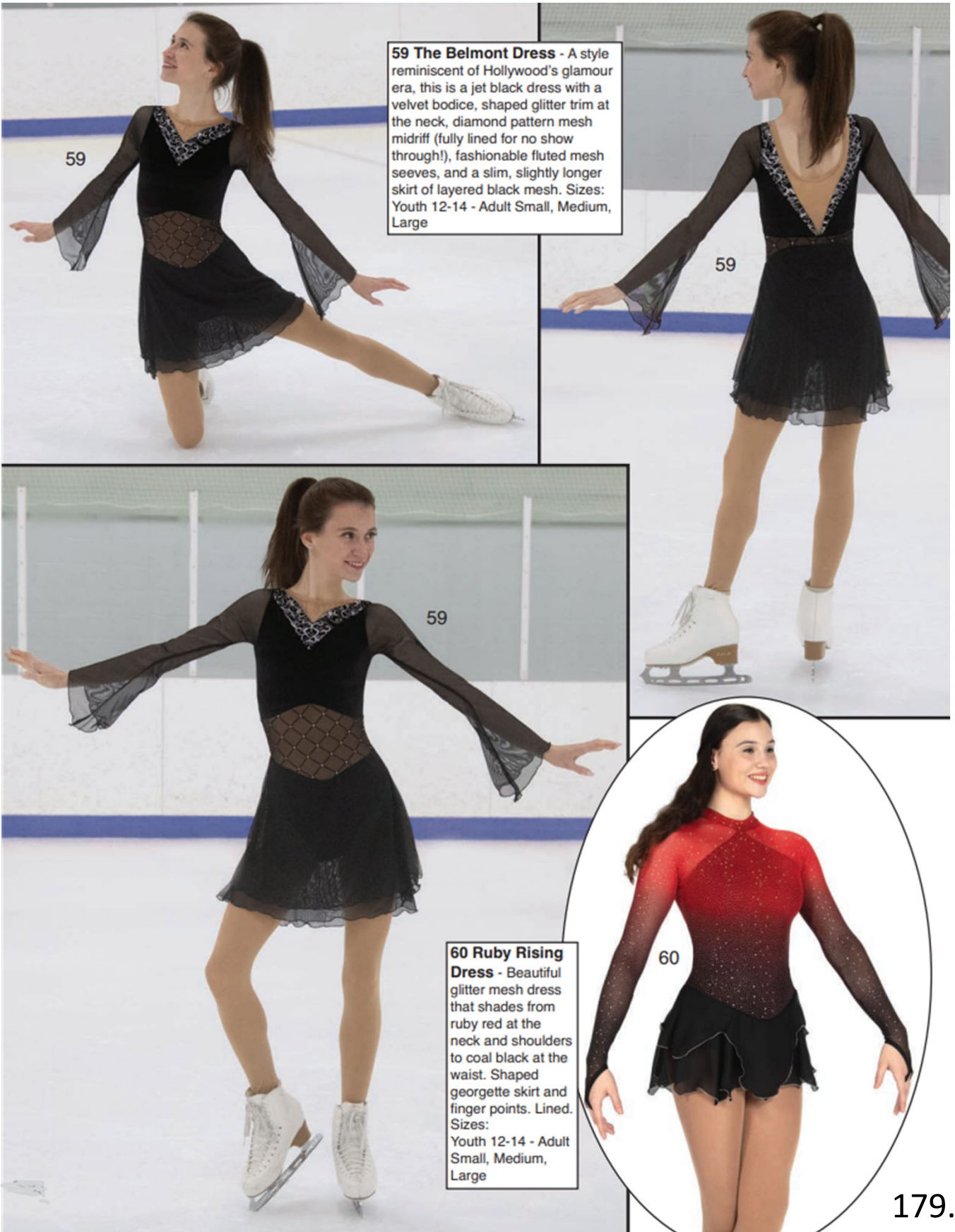


57 Ice Wine Dress - Rivers of icy silver-blue glitter glide down this rich wine dress. Mesh latch-back styling and lined deep V-front. Double layer linen chiffon skirt. Sizes: Youth 12-14 - Adult S, M, L

58 Lace Vivace Dress - Jet Black or Royal Blue - Curved glitter trim highlights this velvet dress and sets off the long lace sleeves with finger points and the classic back keyhole. A scattering of crystals adds sparkle and silver edging on the georgette skirt adds a polished note. Sizes: Youth 12-14 - Adult S, M, L



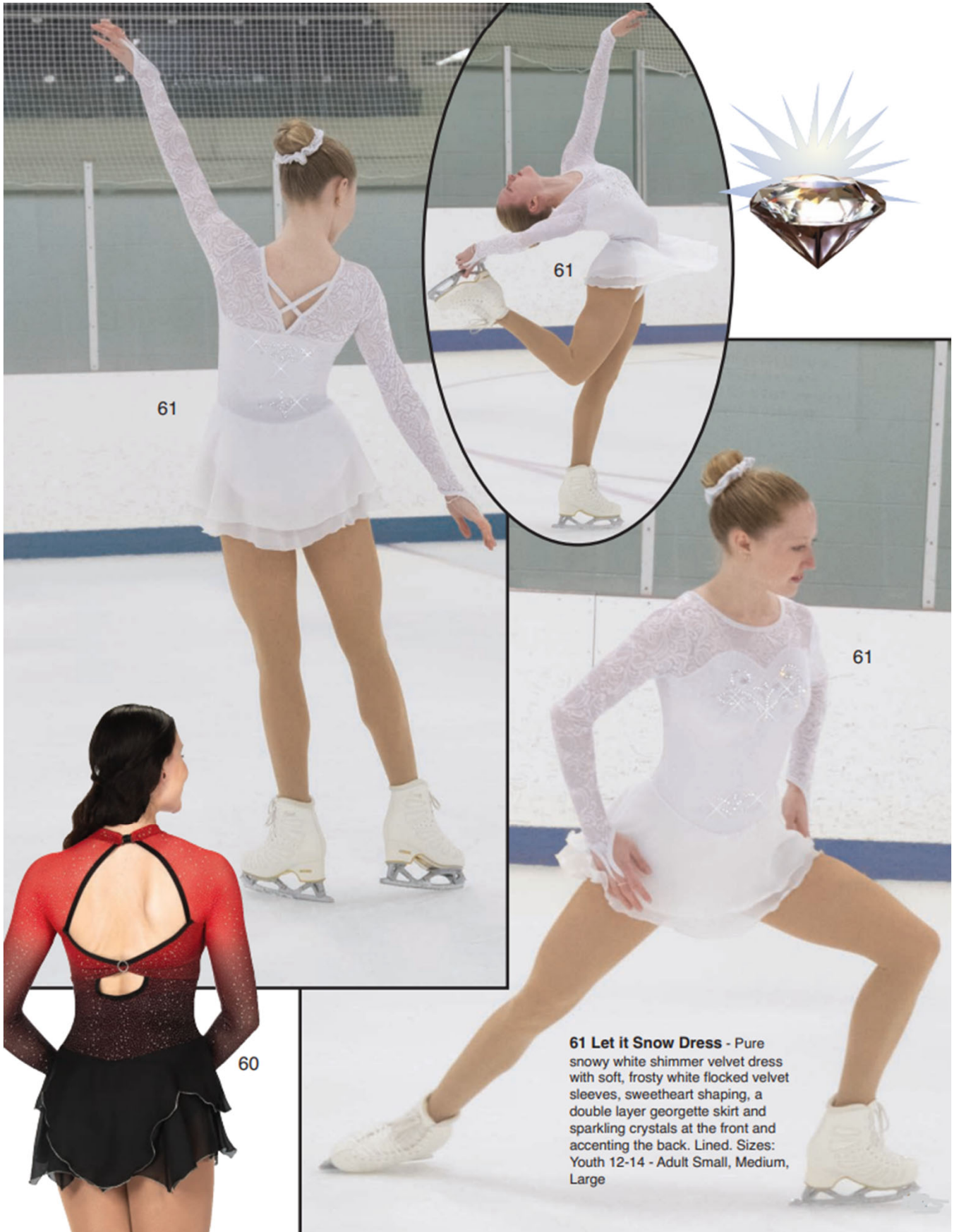
179.-



59 The Belmont Dress - A style reminiscent of Hollywood's glamour era, this is a jet black dress with a velvet bodice, shaped glitter trim at the neck, diamond pattern mesh midriff (fully lined for no show through!), fashionable fluted mesh sleeves, and a slim, slightly longer skirt of layered black mesh. Sizes: Youth 12-14 - Adult Small, Medium, Large

60 Ruby Rising Dress - Beautiful glitter mesh dress that shades from ruby red at the neck and shoulders to coal black at the waist. Shaped georgette skirt and finger points. Lined. Sizes: Youth 12-14 - Adult Small, Medium, Large

179.-



61 Let it Snow Dress - Pure snowy white shimmer velvet dress with soft, frosty white flocked velvet sleeves, sweetheart shaping, a double layer georgette skirt and sparkling crystals at the front and accenting the back. Lined. Sizes: Youth 12-14 - Adult Small, Medium, Large

239.-

106
Wine



106
Wine



106
Jet
Black



106
Jet
Black



106
Sequin
Chasse Dress
 - Wine or Black -
 A little ritzy, a little
 edgy, all out glam. Full
 sequin velvet body with
 a slim stiletto style key-
 hole at one shoulder and
 a pair of spaghetti straps
 at the other. Designed
 with a crossed keyhole
 back and angled
 georgette skirt.
 Sizes: Youth
 12-14 - Adult
 S, M, L

107



107



107



107
Montpellier
Dance Dress -
 Classic black dance
 dress in velvet with
 silver glitter, a sweetheart
 neckline, long mesh
 sleeves and a lovely
 diamond back with win-
 dow pane straps. Sizes:
 Youth 12-14 - Adult
 Small, Medium,
 Large

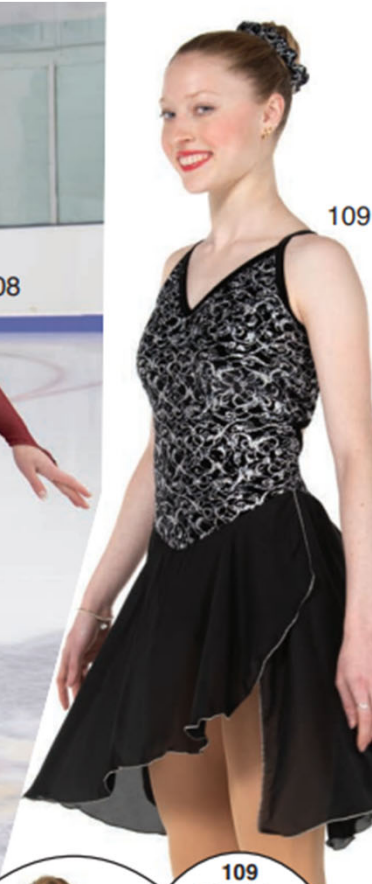
165.-



108
Tango & Twirl Dress -
 Rich wine colour dress beautifully designed in a flattering shoulder skimming neckline and dipped back with crossed strap accents. Matching long mesh sleeves and a flowy skirt complete the look. Sizes: Youth 10-12, 12-14 - Adult S, M, L, XL



108



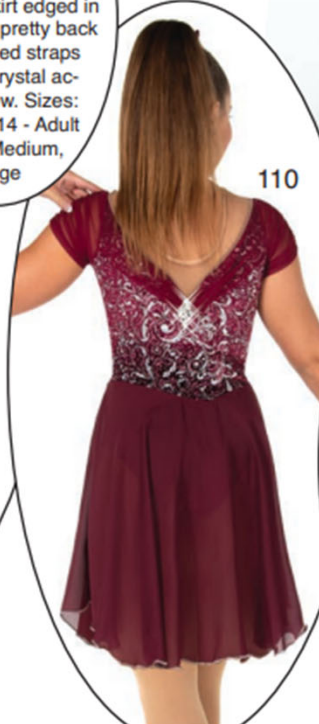
109
Midnight Minuet Dance Dress - Black velvet dress with swirls of silver glitter, a side wrap georgette skirt edged in silver and a pretty back with crossed straps above a crystal accented bow. Sizes: Youth 12-14 - Adult Small, Medium, Large



109



110
Waltzing in Wine Dress - Gathered wine mesh along the neckline and in the petite sleeves adds feminine charm to this rich burgundy dress. Crystal accents and silver edging on the georgette skirt finish the look. Sizes: Youth 12-14 - Adult Small, Medium, Large



110

165.-

175.-



179.-

38



38 Duality Dress - A refined, evening gown style that pairs jet black and champagne blush together with a flowy empire style skirt, wide satin waist banded in black and a flattering lace bodice with glistening champagne sequins underneath for a touch of glamorous sparkle. Elegant, classy and chic. Lined. Sizes: Youth 12-14 - Adult Small, Medium, Large

39 Diamond Drizzle Dress - Gold diminutive diamond patterned velvet dress with long glitter mesh sleeves, a marquis neckline and diamond drop back with crossed straps. Sizes: Youth 12-14 - Adult Small, Medium, Large, XL

39



38



38



39



199.-

179.-

19 Grayceful Dress - An elegant silver and gray combination of velvet, glitter, crystals and a flowy empire cut skirt. Off-the-shoulder styling with cross sleeve cutouts and a dipped back with crossed strap detailing. Sizes: Youth 12-14 - Adult Small, Medium, Large, XL



19

20



19



20

20 Palest of Roses Dress - A blush pink dress of soft glitter velvet accented by sheer shirred sleeves and a shimmering sheer mesh top skirt. The V-shape neckline is edged with gathered mesh and a crystal brooch at the front and back. Lined. Sizes: Youth 10-12, 12-14 - Adult Small, Medium, Large

179.-



138



139



140

138 Glass Skates Dress - Crystal blue velvet dress with silver and sapphire glitter, gently gathered mesh along the shoulders and a double layer princess style skirt. Lined. Sizes: Youth 6-8, 8-10, 10-12, 12-14

139 Ballet Slipper Dress - Soft blush velvet in the same tone as ballet flats is styled with glove style sleeves and a layered skirt of georgette and organdy. Lined. Sizes: Youth 6-8, 8-10, 10-12, 12-14

140 Swirls & Bows Dress - Royal blue glitter velvet is dressed up with a glitter mesh sweetheart neckline and a trio of back bows. Sizes: Youth 6-8, 8-10, 10-12, 12-14



138



139



140

179.-

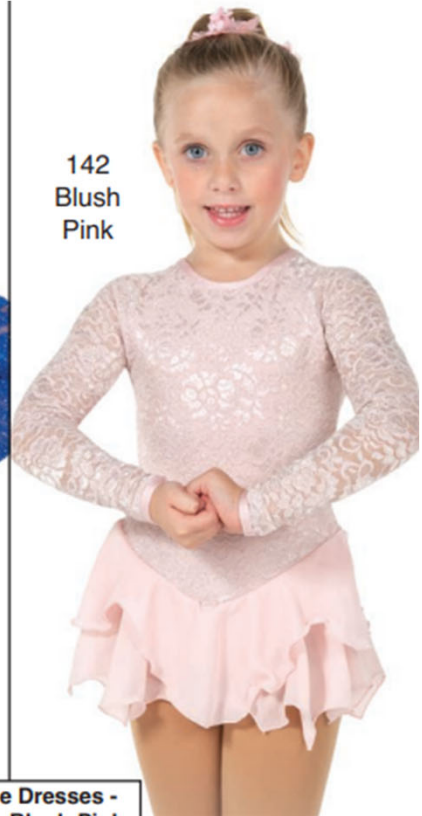


141

141 Lilac Breezes Dress - A breezy, easy on the eyes blend of blue and lilac lace overlaid with silver glitter and styled with a V-shape back and double layer georgette skirt. Lined in lycra. Sizes: Youth 6-8, 8-10, 10-12,12-14



142
Royal
Blue



142
Blush
Pink

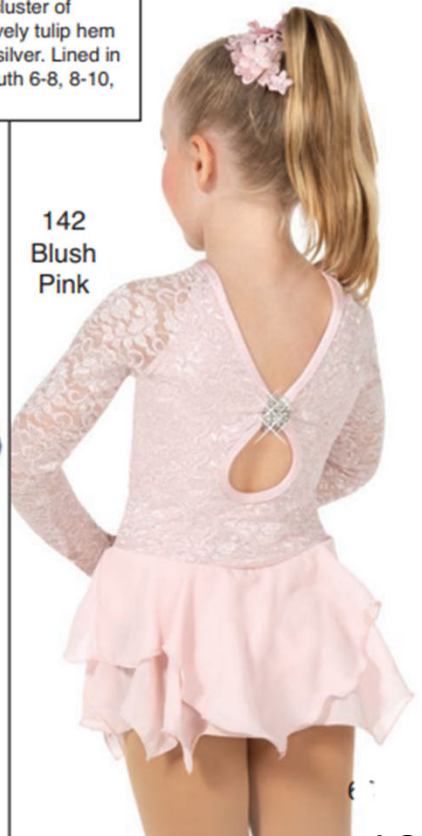
142 Tulip Lace Dresses - Royal Blue or Blush Pink - Pretty glitter lace dresses with dropped keyhole backs accented by a cluster of crystals, and lovely tulip hem skirts edged in silver. Lined in lycra. Sizes: Youth 6-8, 8-10, 10-12, 12-14



141



142
Royal
Blue



142
Blush
Pink

165.-

103 Blush Ballgown Dress - A
soft champagne pink coloured glitter
velvet dress with a beautiful crossed
back, a bit of shaped mesh at the
front and a dreamy double layer
georgette skirt in a matching shade
of soft blush pink. Lined.
Sizes: Youth 12-14 - Adult Small,
Medium, Large



103

103



103



104

199.-

40 Silk Cameo Dress - Champagne Silk or Cameo Blush - Silky textured velvet burnout dresses dusted all over with silvery glitter and cut in a flattering off-the-shoulder design with a locket style dropped keyhole back and finished with a matching georgette skirt. Fully lined in matching lycra. Sizes: Youth 10-12, 12-14 - Adult Small, Medium, Large

40
Cameo
Blush



40
Champagne
Silk



40
Cameo
Blush



40
Champagne
Silk



175.-



30 Starshade Dress - Starry blue glitter slinky dress with a low-cut back highlighted by crossed spaghetti straps and a dip-dyed georgette skirt that shades from royal at the waist to misty blue at the hem. Lined. Sizes: Youth 12-14 - Adult Small, Medium, Large

29 Rosings Park Dress - A charming confection of rosy glitter lace, long sleeves with finger points, a low back trimmed with crossed straps and a soft, flowy georgette skirt that fades to faint blush at the hem. Lined. Sizes: Youth 10-12, 12-14 - Adult Small, Medium, Large

179.-



84 Indispensable Dress -
 This is a basic, essential style dress in lycra with a scoop back, long mesh sleeves and a slim lycra skirt. Sizes: Youth 8-10, 10-12, 12-14 - Adult Small, Medium, Large

85 Demi-Pointe Dress - Jet Black, Ballet Pink or Navy Blue - Soft velvet dresses with long mesh sleeves, layered tulip hem skirts, a crossed back and an accent of crystals along the mesh V-neck. Sizes: Youth 10-12, 12-14 - Adult Small, Medium, Large



135.-

165.-



23
Blue Iris
Dress - Shaded lace blends from flag blue at the shoulders to purple iris at the waist. Long lacy sleeves with finger points, a back keyhole and double layer georgette skirt of purple and blue are complemented by the sparkle of sequins that line the bodice. Sizes: Youth 12-14 - Adult Small, Medium, Large

24
Black/ Purple

24
Black/ Purple

24
Black/ Blue

24
Sound of Swirls Dress - Black/Purple or Black/Blue - Swirling glitter pattern set against jet black velvet catches the light and reflects in shades of silver and blues or purples. Long mesh sleeves with finger points, a back keyhole with crossed straps and a double layer georgette skirt add finesse. The V-shape front is lined for opacity. Sizes: Youth 12-14 - Adult Small, Medium, Large

179.-

62 The Loop Swoop Dress - Royal Blue or Bordeaux - Glittery loop velvet dresses in jewel tones feature side wrap georgette skirts edged in silver, sweetheart shaping at the front, long mesh sleeves with finger points and a traditional back keyhole. Sizes: Youth 12-14 - Adult Small, Medium, Large



62
Royal
Blue



62
Bordeaux



62
Royal
Blue

63 Pure Gold Dress - Gold velvet dress with a slanted front neckline and a sparkling crystal ring accent at one shoulder. Matching georgette skirt and back strap details. Lined. Sizes: Youth 12-14 - Adult S, M, L



63



63

179.-



69

69 Jewel Blue Dress - Rich sapphire blue shimmer velvet dress with long mesh sleeves, a jewel front neckline and V-back accented by crossed spaghetti straps. Glitter trim and a layered, tulip style georgette skirt edged in silver complete the look.
 Sizes: Youth 12-14 - Adult Small, Medium, Large

179.-



69



70

70 Amethyst Avalanche Dress - Jewel toned lycra dress in deep purple with a cascade of crystals starting from large clear stones at the neck to tiny amethyst crystals at the waist. Long mesh sleeves with finger points, a classic back keyhole and a double layer georgette skirt. Lined.
 Sizes: Youth 12-14 - Adult Small, Medium, Large, XL



71



71

71 Tanzanice Dress - Lovely purple velvet dress swirled with silver glitter and fashioned with sheer fluted sleeves and a rhombus shaped back keyhole. Double layer mesh and georgette skirt.
 Sizes: Youth 12-14 - Adult Small, Medium, Large

179.-



70

199.-





239.-



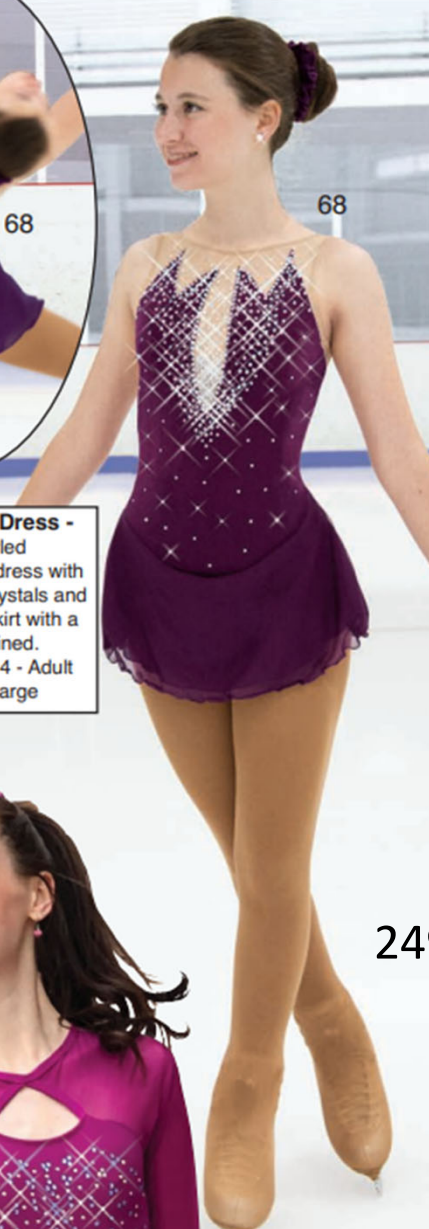
67
Blue Beryl Dress - The unique diamond back keyhole trimmed with window pane straps adds interest to this teal glitter velvet dress. Long mesh sleeves with finger points; flowy georgette skirt. Lined. Sizes: Youth 12-14 - Adult S, M, L



179.-



68
68 Mysterious Dress - A dramatically styled aubergine slinky dress with a crescendo of crystals and a flattering slim skirt with a mesh overskirt. Lined. Sizes: Youth 12-14 - Adult Small, Medium, Large



249.-



65
65 Icephoria Dress - Rich orchid-toned lycra dress with a dip-dyed georgette skirt that shades to a frosty blue at the hem. Sparkling iridescent and blue crystals are an opulent touch and the front prism shaped cutout and finger points on the long mesh sleeves complete the look. Lined. Sizes: Youth 12-14 - Adult S, M, L

154 Crystal Kisses Dress - Pink, Turquoise or Navy Blue- Lycra dress with a sweetheart neckline and long sleeves in glitter mesh, and sparkling crystals across the front and back. Double layer skirt of glitter mesh over georgette accented with a detachable bow at the back. Lined. Sizes: Youth 6-8, 8-10, 10-12, 12-14



154
Pink

154
Turquoise

154
Navy
Blue

154
Turquoise

154
Pink

179.-



148



149

149 Fuchsia Fire Dress - Starry silver glitter shines brightly against the fire pink and magenta mesh of this cheerful dress. A shirred neckline with crystal brooch accents, double skirt and finger points add extra pizzazz. Lined. Sizes: Youth 6-8, 8-10, 10-12, 12-14



150

148 Go With The Flow Dress - Pretty empire style dress with a flowy sheer mesh top skirt and glittery glove-look sleeves with finger points all in a deep inky blue. Sizes: Youth 6-8, 8-10, 10-12, 12-14 - Adult S

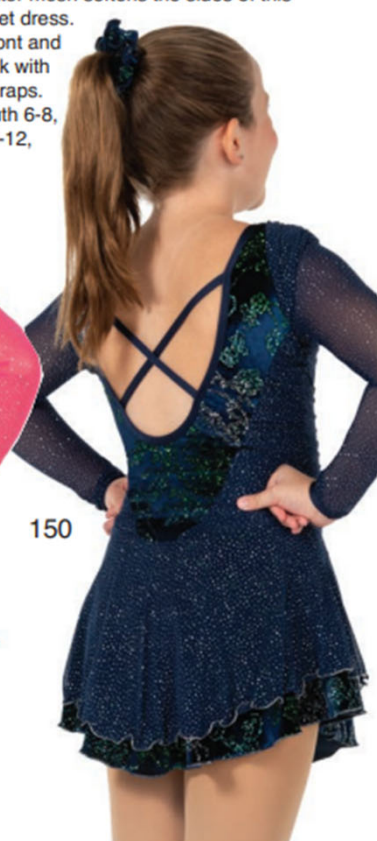
150 Wavy Navy Blue Dress - Gently shirred glitter mesh softens the sides of this glitter velvet dress. Shaped front and scoop back with crossed straps. Sizes: Youth 6-8, 8-10, 10-12, 12-14



148



149



150

179.-

169.-

159.-

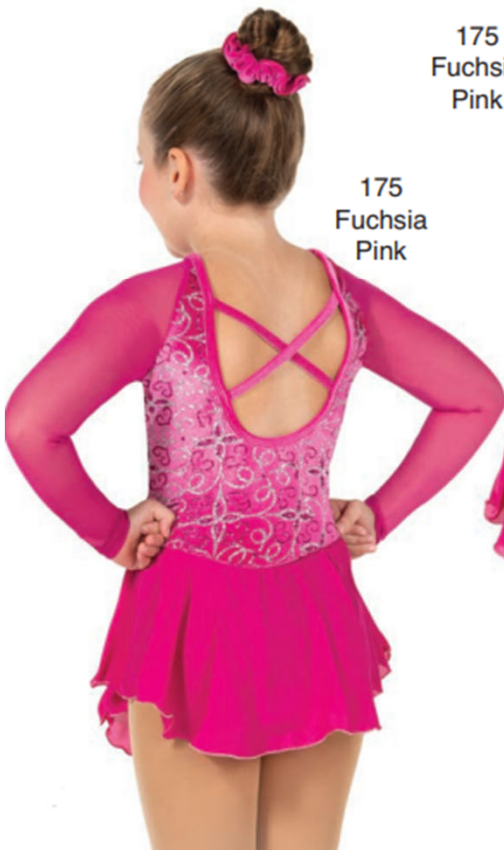


175
Capri
Blue

175 Silver Sweet Dress - Capri Blue or Fuchsia Pink - Traditional style dresses in deep jewel tones with glittery velvet bodies, long mesh sleeves and matching georgette skirts edged in silver. Sizes: Youth 4-6, 6-8, 8-10, 10-12, 12-14 - Adult S



175
Capri
Blue



175
Fuchsia
Pink

175
Fuchsia
Pink



176

165.-



177
Crocus
Purple

177 Ice Whirl Dress - Tiffany Blue or Crocus Purple - Swirls of icy silver glitter sparkle against soft velvet in these pretty dresses. High front neck with scoop back, long mesh sleeves and a full glitter skirt. Sizes: Youth 4-6, 6-8, 8-10, 10-12, 12-14



177
Crocus
Purple



177
Tiffany
Blue



176

176 Music at Midnight Dress - Black velvet dress with a high front neck and stylish square back enhanced by a ring of gold crystals. Long mesh sleeves and a traditional style glitter skirt. Sizes: Youth 6-8, 8-10, 10-12, 12-14 - Adult Small



177
Tiffany
Blue

165.-



155

156

156 Drifting Petals Dress - Soft pink velvet dress with mesh sleeves, scalloped swirls of shaded glitter, and a georgette skirt that shades from rosy pink at the waist to icy pink at the hem. Lined. Sizes: Youth 6-8, 8-10, 10-12, 12-14

157

155 Wisteria Wishes Dress - Soft purple velvet dress with long mesh sleeves and a rounded neckline trimmed in iridescent glitter, plus a matching filmy skirt and sparkling iridescent crystals. Lined. Sizes: Youth 6-8, 8-10, 10-12, 12-14

157 Frozen Whispers Dress - This snowy white and tiffany blue confection features an asymmetrical sweep of white glitter velvet along the neckline and one sleeve, accented by a delicate spray of embroidered and crystallized rosettes. Sizes: Youth 6-8, 8-10, 10-12, 12-14



155

156

157

179.-



167

170
Pink
Kitty

170
Blue
Bear

170
Blue
Bear

170 Crystal Critters
Dress -
Kitty on Deep Pink
Penguin on Black
Polar Bear on Blue
Bunny on Purple

167 Ore D'Or Dress - Deep purple mesh is tastefully embroidered with gold sequins and teamed with gold trim to create a sophisticated style. Classic back keyhole and double layer skirt edged in gold. Lined.
 Sizes: Youth 6-8, 8-10, 10-12, 12-14 - Adult Small

170 Crystal Critters Dress - Charming crystal critters sparkle and glitter as they skate along on our soft velvet dresses. Designed with long sleeves, a twinkle velvet skirt and twinkle velvet trim at the neck and finished with a back zipper. Sizes: Youth 4-6, 6-8, 8-10, 10-12, 12-14



167

170
Black
Penguin

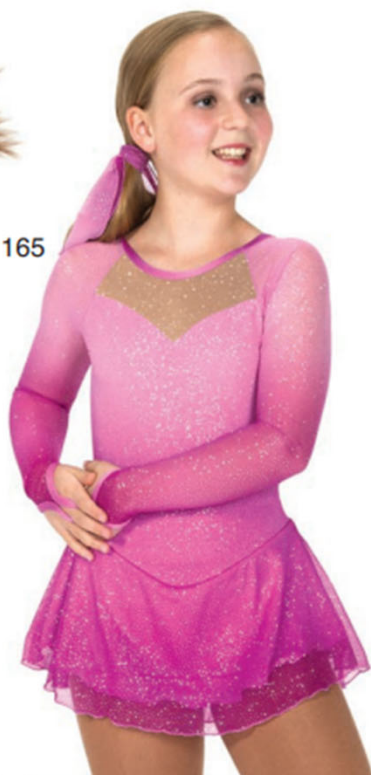
170
Black
Penguin

170
Purple
Bunny

165.-



164



165

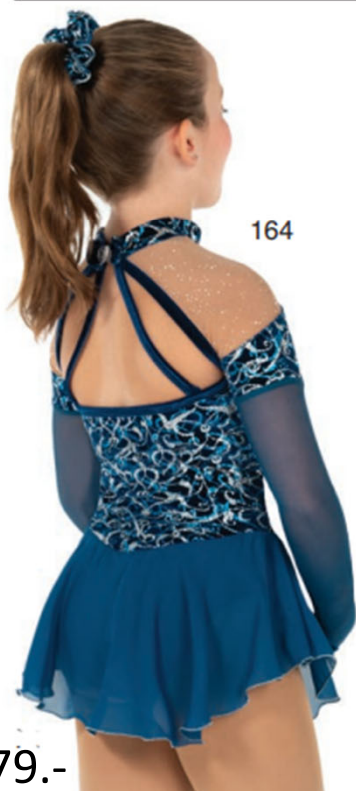


166

164 Twilight Teal Dress - An elegant, off-the-shoulder style with glove-look mesh sleeves and a lovely trimmed back keyhole with diverging spaghetti straps. Sizes: Youth 6-8, 8-10, 10-12, 12-14 - Adult S

165 Asters After Rain Dress - Entirely confectioned from glitter mesh, this dress shades from light camellia at the shoulders to deep orchid at the hem. Lined. Sizes: Youth 6-8, 8-10, 10-12, 12-14 - Adult Small

166 Lacy Clouds Dress - A pretty blue shimmer velvet and white glitter lace combination. Lined; double layer georgette skirt. Sizes: Youth 6-8, 8-10, 10-12, 12-14



164



165



166

179.-

159.-

169.-

100
Deep
Purple



100 Trellistep Dance Dress - Red or Deep Purple - The eye catching trellis style back on this dress pairs nicely with a side-wrap georgette skirt edged in silver to accent the silver-swirled glitter velvet. Deep purple colour has long plain mesh sleeves with finger points; the red has glitter mesh sleeves. Back zipper closure at the high neck. Sizes: Youth 12-14 - Adult Small, Medium, Large

100
Deep
Purple



100
Deep
Purple



100
Red



100
Red



179.-



52

52 Icicle Rose Dress - Lovely lycra dress that fades from light camellia pink at the neck to deep rose pink at the waist. Open back styling with slim crossed straps, a drizzle of icy crystals across the front and a flowy, slim georgette skirt. Lined. Sizes: Youth 12-14 - Adult Small, Medium, Large

52

Crystal Accents



175.-



53

53 Oceans of Diamonds Dress - Deep jewel toned dress with a diamond flocked bodice over lycra, shimmer mesh sleeves with finger points, a diamond shape back and lined front insert and a tulip hem skirt. Sparkling crystals and teal rhinestones add shine. Sizes: Youth 12-14 - Adult S, M, L

53

179.-



64
Vase
Green



64
Vase
Green

**64 Swan Rose Dress -
Black Onyx or Vase Green -**
Elegantly dramatic dresses in
lycra with lace straps, a layered
skirt of lace, sheer organdy and
georgette, and scrolling crystal
roses front and back. Lined.
Sizes: Youth 12-14 - Adult Small,
Medium, Large



64
Black
Onyx



64
Black
Onyx



64
Black
Onyx

210.-