



INSTRUCTIONS FOR USE

TD85.13XX

Tumble Dryer
T411HS.W.U

Carefully read the instructions for use before using the dryer.

Dear Customer,

We thank you for purchasing this quality ASKO product.

We hope it meets all your expectations. Scandinavian design combines pure lines, everyday functionality, and high quality. These are the key characteristics of all our products, and the reason why they are highly appreciated across the globe.

We kindly recommend that you read these instructions before using the appliance for the first time. The instruction manual also includes information on how you can help protect the environment.

TABLE OF CONTENTS

Important safety instructions	3	Cleaning and maintenance	32
Dryer description	6	Errors and Troubleshooting	40
Before using the appliance for the first time	7	Service and warranty	44
Installation and connection	9	Technical information	47
Tips before drying	18	Program table	48
Drying process	21	Disposal	49
System settings	29	Quick guide	51

The following symbols are used throughout the manual and they have the following meanings:

	Information, advice, tip, or recommendation		Warning – danger of hot surface
	Warning – general danger		Warning – danger of fire
	Warning – danger of electric shock		

Original instructions

See Quick guide on the last page.



GENERAL



SAVE THESE INSTRUCTIONS FOR FUTURE REFERENCE!

⚠ WARNING - To reduce the risk of fire, electric shock, or injury to persons when using your appliance, follow basic precautions, including the following:

1. Read all instructions before using the appliance.
2. **⚠ WARNING** - Only use the dryer to dry laundry that was washed with water. Do not dry any laundry that was washed or cleaned with flammable cleaners or substances (such as gasoline, trichloroethylene, etc.) as this may result in an explosion.
3. Do not wash or dry articles that have been previously cleaned in, washed in, soaked in, or spotted with gasoline, dry-cleaning solvents, cooking oils, other flammable or explosive substances as they give off vapors that could ignite or explode.
4. Instructions for use are available on our website at www.askona.com.
5. **Your dryer is intended solely for household use.**
6. Do not allow children to play on or in the appliance. Children should be closely supervised when near the appliance.
7. Before the appliance is removed from service or discarded, remove the door to the drying compartment.
8. Do not reach into the appliance if the drum is moving.
9. Do not install or store this appliance where it will be exposed to the weather.
10. Do not tamper with controls.
11. Do not attempt to repair or replace any part of the appliance or perform any servicing unless specifically recommended in this guide.
12. Do not use fabric softeners or dryer sheets unless the manufacturer gives written assurance that the product will not damage a tumble dryer.
13. **⚠ WARNING** - Do not heat dry items containing vinyl, plastic, foam rubber or similarly textured rubberlike materials, fiberglass, or wool unless the label specifies "washable".
14. Clean the lint filter before or after each load.
15. Keep the area around the exhaust opening and adjacent surrounding areas free from the accumulation of lint, dust and dirt.
16. The interior of the machine should be cleaned periodically by an authorized ASKO service agent.
17. Do not place items exposed to cooking oils in your dryer. Items contaminated with cooking oils may contribute to a chemical reaction that could cause a load to catch fire. To reduce the risk of fire due to contaminated loads, the final part of a tumble dryer cycle occurs without heat (cool down period). Avoid stopping a tumble dryer before the end of

the drying cycle unless all items are quickly removed and spread out so that the heat is dissipated.

18. Electrical installation, if required, must be done by a licensed electrician.
- 19. Do not operate appliance while away from the home.**
20. Do not heat dry items that have been dry-cleaned.
21. The dryer is made and marked to facilitate recycling. When it is no longer useful, contact your local refuse collection service for advice on how to properly dispose of the dryer for purposes of recycling.
22. Damaged power cables should only be replaced by a certified professional.
23. Provide sufficient ventilation, otherwise smoke from open fires or fumes from equipment burning other fuels can be drawn into the room.
24. ⚠ CAUTION - During the program, the back of the dryer will get very hot. Let the machine cool completely before touching the back.
25. ⚠ WARNING!
PROPOSITION 65 FOR CALIFORNIA RESIDENTS
Cancer and Reproductive Harm – www.P65Warnings.ca.gov
26. ⚠ WARNING - This appliance must be properly grounded.

a) For a grounded, cord-connected appliance:

GROUNDING INSTRUCTIONS

This appliance must be grounded.

In the event of malfunction or breakdown, grounding will reduce the risk of electric shock by providing a path of least resistance for electric current.

This appliance (Canadian market only) is equipped with a cord having an equipment-grounding conductor and a grounding plug. The plug must be plugged into an appropriate outlet that is properly installed and grounded in accordance with all local codes and ordinances.

⚠ WARNING - Improper connection of the equipment-grounding conductor can result in a risk of electric shock. Check with a qualified electrician or service representative or personnel if you are in doubt as to whether the appliance is properly grounded. Do not modify the plug provided with the appliance (Canadian market only). If it will not fit the outlet, have a proper outlet installed by a qualified electrician.

Use copper conductors only, if the terminal is acceptable only for connection to copper.

To reduce the risk of electric shock, disconnect this appliance from the power supply before attempting any user maintenance other than cleaning the lint trap. Turning the controls to the OFF position does not disconnect this appliance from the power supply.

To reduce the risk of fire, this appliance must be exhausted outdoors or the equivalent. Do not exhaust into a chimney, wall, ceiling or concealed space in a building.

b) For a grounded, permanently connected appliance:

GROUNDING INSTRUCTIONS

This appliance must be connected to a grounded metal, permanent wiring system, or an equipment-grounding conductor must be run with the circuit conductors and connected to the equipment-grounding terminal or lead on the appliance.

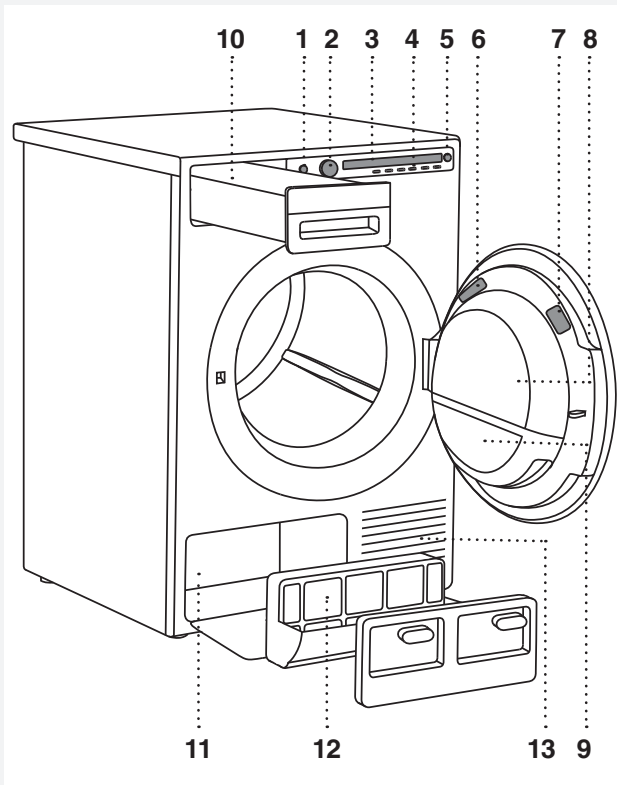
💡 This manual does not cover every possible condition and situation that may occur. Use common sense and caution when installing, operating, and maintaining any appliance.

KIDSAFE™ CHILD SAFETY

- ⚠️ **WARNING - Do not allow the children to play with the dryer.**
- Prevent your children and pets from entering the dryer drum.
- Before closing the dryer door and running the program, make sure there is nothing except laundry in the drum (e.g. if a child climbed into the dryer drum and closed the door from the inside).
- **Activate the child lock.**
See chapter "SYSTEM SETTINGS", section Child Lock.
- **Do not let children younger than three years to come near the dryer, unless they are under constant supervision.**
- The dryer is made in compliance with all relevant safety standards. This dryer may be used by children aged 8 years and above and by persons with reduced physical, sensory or mental capabilities or lack of experience and knowledge, but only if they are supervised during the use of the appliance, if they have been provided relevant instructions regarding safe use of the dryer, and if they understand the hazards of inappropriate use. Make sure children do not play with the appliance. Make sure the children do not clean the dryer or perform any maintenance tasks without supervision.

SAVE THESE INSTRUCTIONS FOR FUTURE REFERENCE!

DRYER DESCRIPTION



1. Main switch (ON/OFF)
2. Program selector knob
3. Display unit
4. Program selector buttons
5. Button (start/pause)
6. Rating plate with information about the dryer (on the inside of the dryer door)
7. QR and AUID code (on the inside of the dryer door)
8. Dryer door
9. Door net filter
10. Condensate tank (depending on the model)
11. Heat pump
12. Heat pump filter
13. Air vents

BEFORE USING THE APPLIANCE FOR THE FIRST TIME

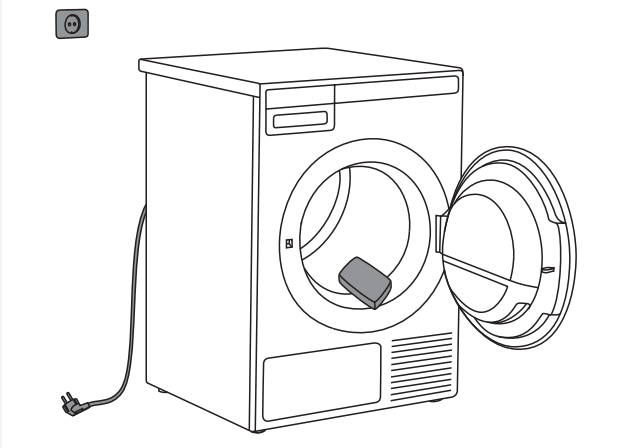
PACKAGING

Remove all packaging.

Please sort the materials in compliance with local recommendations (see chapter "DISPOSAL").

CLEANING

Disconnect the dryer from the power mains and open the door towards you. Clean the dryer drum with a damp cloth and a mild detergent.



 No program can be started while the door is open.

CHOOSING THE LANGUAGE

When the dryer is connected (see chapter "INSTALLATION AND CONNECTION") and switched on for the first time, choose the preferred language:

1. Use the program selector knob or button 2 to scroll the list of languages.
2. Confirm your selection by pressing the OK button.
3. Press the "Finalize" button to confirm your selection.


For further drying process, see chapter "DRYING PROCESS".


STEAM PROGRAMS

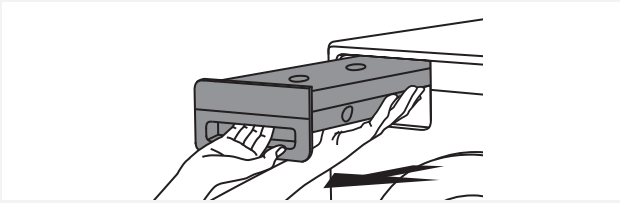
If you select one of the steam programs as the first program to be run with your dryer, first add distilled water to the steam generator tank (min.=0.3 l (0.08 gal); max.=1.5 l (0.4 gal)); the dryer needs the distilled water to generate steam.

If the steam generator tank is empty, none of the steam programs will be available.

"LOW" will be indicated on the display (empty steam generator tank). As you use your dryer, the system will be filled automatically with condensed water extracted during the drying process.

 Only use distilled water. Use of regular tap water or any additives is forbidden. Limescale may damage the heater. Such damage is not covered by the warranty.

 Only add distilled water when the appliance is switched on and one of the steam programs is selected (but before you start the program). Otherwise, the level sensor will not operate and water may overflow to the dryer interior.



1 Remove the condensate tank.

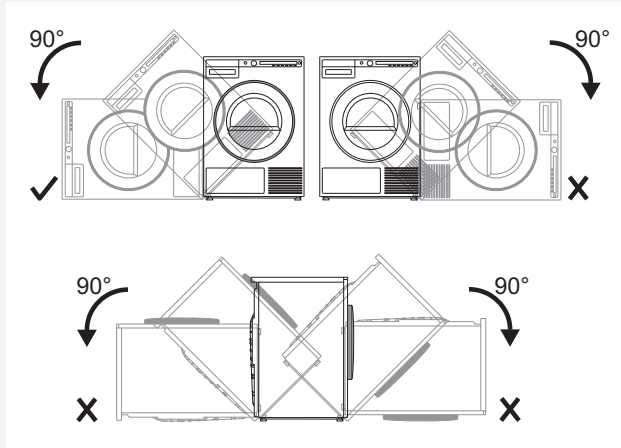


2 Slowly add distilled water to the steam generator tank filter.

- 💡 By pouring the water slowly, you will prevent the water from flowing down the front wall of the appliance. Steam generator tank is not visible as it is located in the dryer interior; only the steam generator tank filter is visible.
- 💡 When the steam generator tank is full, "HIGH" will be displayed on the screen and an acoustic alarm will be emitted.
- 💡 If you decide to run the condensate drain hose into a drain, siphon, or washbasin, the steam program will run normally, without manually adding distilled water into dryer.
- 💡 When you run the dryer for the first time, or if the dryer has been out of use for a long time, slight hitting noise may occur.

INSTALLATION AND CONNECTION

💡 After installation, wait for 24 hours without moving the appliance before using it for the first time. If the dryer has to be laid down on one of the sides during transport or servicing, place it with its left side, viewing from the appliance front, downwards.



DRYER PLACEMENT

The dryer can be either freestanding or installed on top of a washing machine.

The dryer emits heat. Therefore, do not place it in a very small room, as the drying process may be longer due to limited amount of ambient air.

💡 Do not place the dryer in a room where temperature can drop below 0 °C (32 °F), as the machine may not operate correctly at such low temperatures or may freeze, which can result in damage to the machine.

For optimum dryer operation, install it in a room with adequate ventilation and a temperature between 10 °C (50 °F) and 25 °C (77 °F).

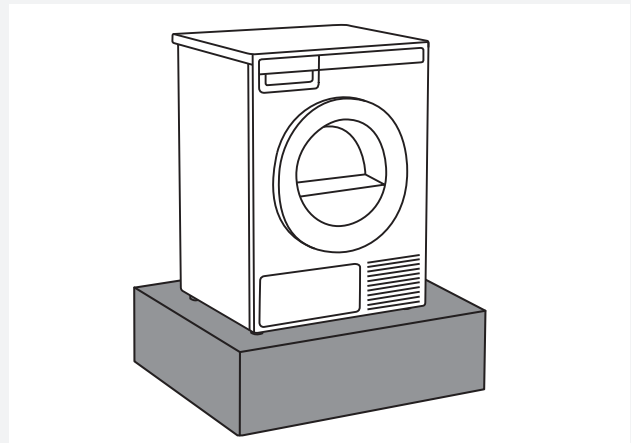
⚠️ Do not place the dryer behind lockable or sliding doors, or doors with a hinge on the opposite side of the dryer door hinge. Install the dryer in such way that the door can always be freely opened.

💡 Never block the air vents.

⚠️ Do not place the dryer on a carpet with long fibres as this may impede air circulation.

💡 If the appliance is installed on a plinth or a similar structure, then the appliance must be fixed to it, to avoid the risk of falling.

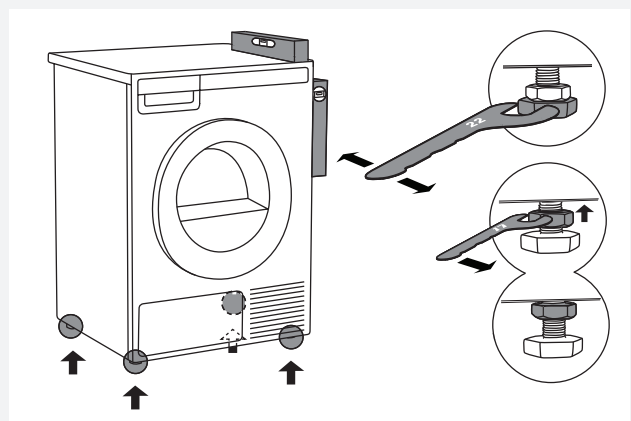
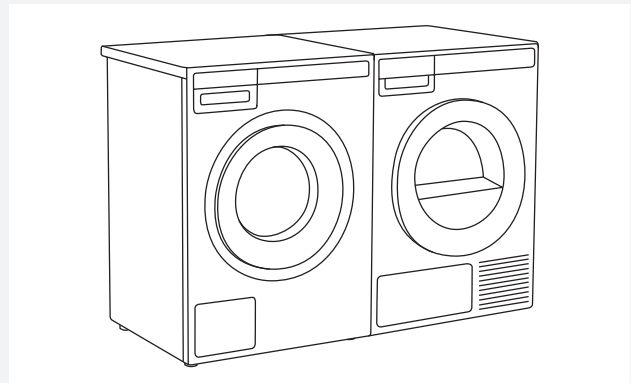
ASKO original accessories are available for this purpose, complete with fixing instructions.



Freestanding appliance

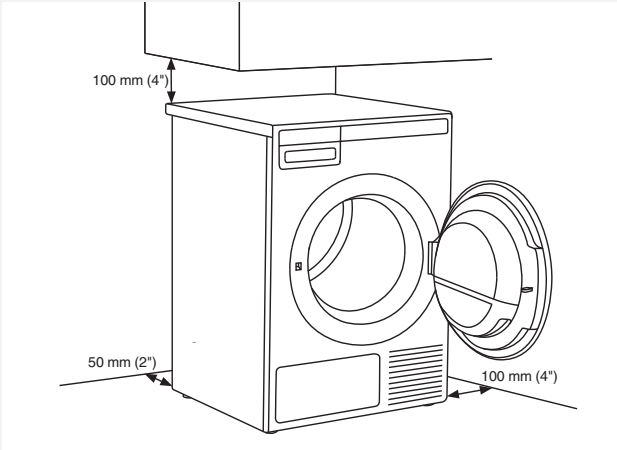
The dryer may be placed adjacent to a washing machine.

If the friction between the dryer feet and the floor is not sufficient, the dryer may move during operation. To prevent sliding, use a non-slide mat or install the supplied vacuum feet onto both front feet.



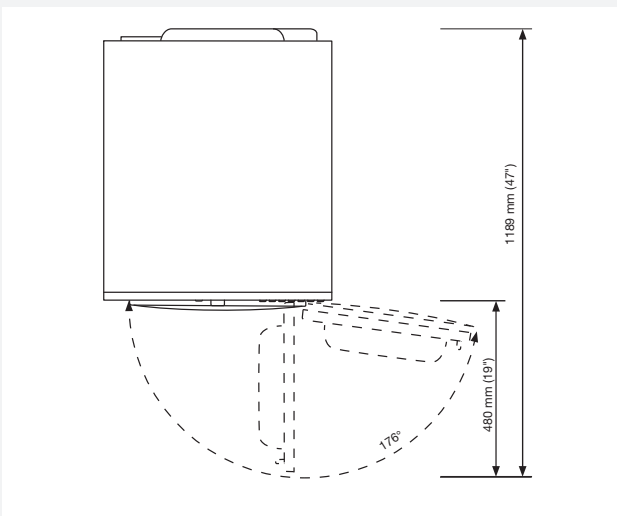
Place the dryer so that it is stable. Use a spirit level to level the dryer horizontally and vertically by rotating the adjustable feet using a No. 22 (0.87") spanner (max. 15 mm (0.59")). Then, firmly tighten the jam nuts (counter nuts) by rotating them towards the appliance bottom using a No. 17 (0.67") spanner ↑.

Clearance around the dryer for optimum operation



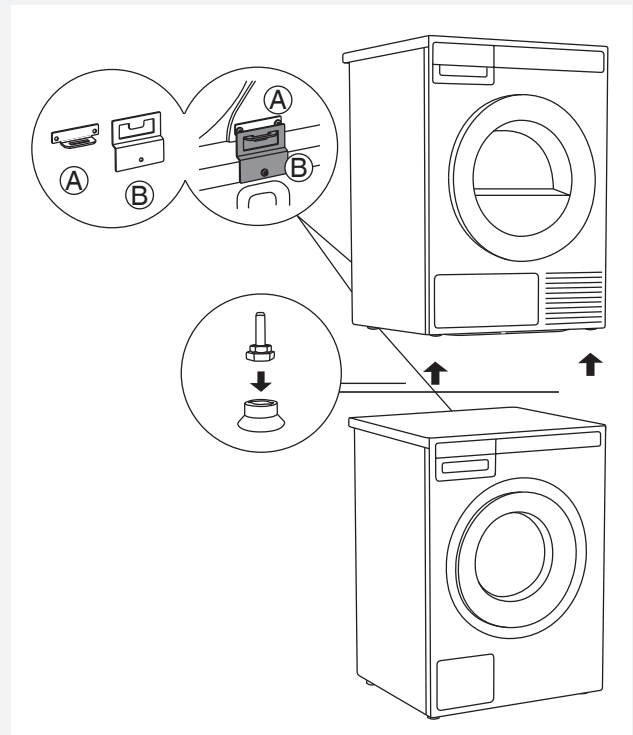
💡 The appliance may not be in contact with a wall or adjacent furniture. For optimum dryer operation, observe the clearance from the wall as shown in the figure.

Opening the dryer door (top view)



Stacking on top of a washing machine

To stack the dryer on top of a washing machine, use the extra vacuum feet and the tipping guard (A+B), supplied in the cardboard box in the dryer drum. Tipping guard part B is designed to fit on ASKO washing machines and it may be hard or impossible to mount on appliances of other brands. If the washing machine and dryer are not of matching dimensions or if you have installed a hidden helper between the two appliances, then binding plates are available as optional accessories at the service unit (available only for HH (accessory Hidden Helpers) and TD75 stacked on top of WM80 or WM85; not intended for any other combinations).



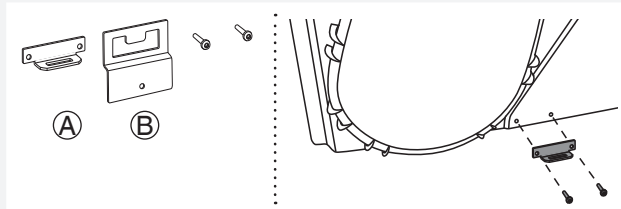
All ASKO washing machines can bear the weight of the dryer.

💡 Washing machine on which you wish to install the dryer must be able to bear the weight of the dryer (see washing machine's rating plate or technical information).

💡 At least two persons are required to install the tumble dryer on top of a washing machine.

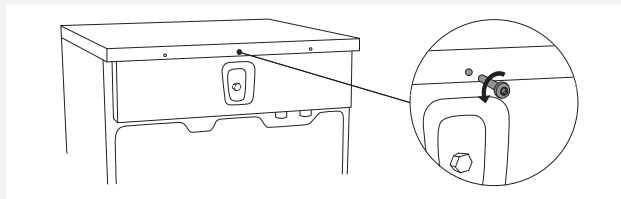
How to stack a dryer onto the washing machine (ASKO):

There is a cardboard box in the dryer drum, containing the vacuum feet and the tipping guard.

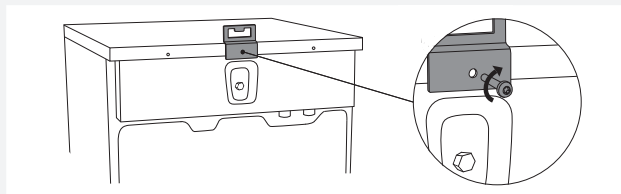


1 The tipping guard consists of two metal parts (A + B).

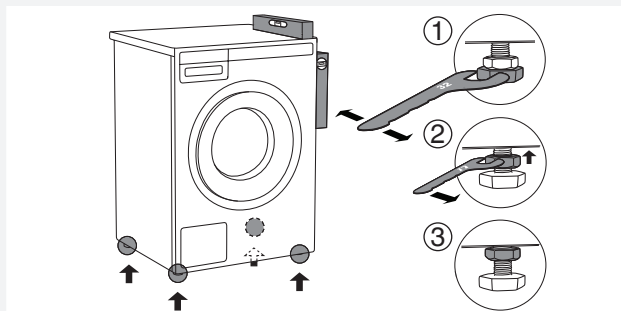
Use two screws to attach the A part to the back of the dryer.



2 Undo the screw on the back side of the washing machine.

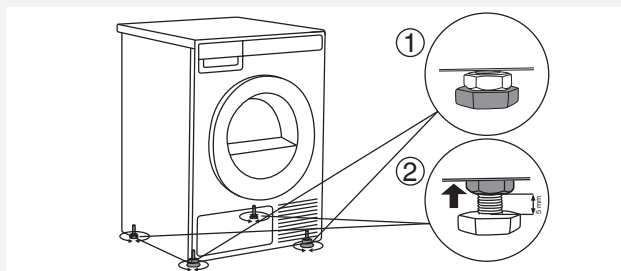


3 Use the screw to attach the tipping guard (B part) to the back of the washing machine.



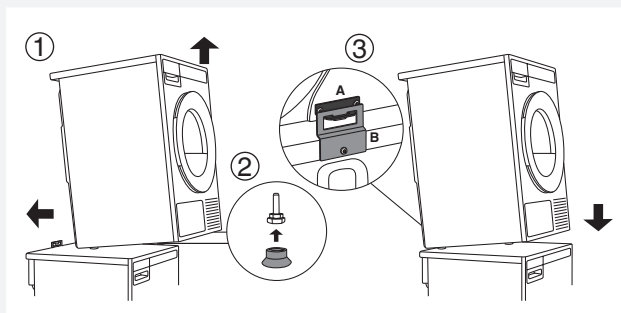
4 Level the washing machine so that it is stable.

1. Level the washing machine by rotating the adjustable feet using a No. 32 (1.26") spanner. The feet allow levelling by +/- 1 cm (0.39").
2. After adjusting the height of the feet, firmly tighten the jam nuts using a spanner No 17 (0.67"), by turning them towards the bottom of the washing machine ↑.
3. Tighten the jam nuts.



5 Set the dryer feet:

1. Tighten the front two feet all the way in.
2. Undo the back feet by 3.5 turns or 5 mm (0.2"); then, fasten the jam nuts towards the bottom of the appliance ↑.



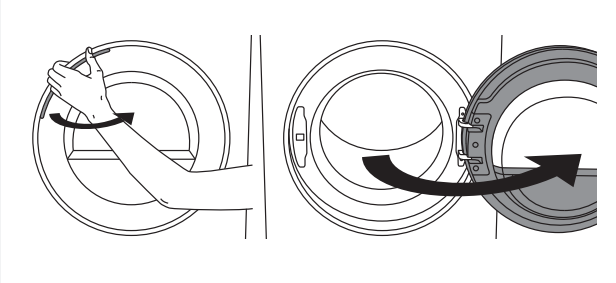
6 Place the dryer onto the washing machine:

1. Lift the front part of the dryer by 5 cm (2") to 10 cm (4")
2. Attach the vacuum feet onto the front feet of the dryer.
3. Push the dryer into the tipping guard (so that the B part is inserted into the A part) and release it (See figure on previous page).

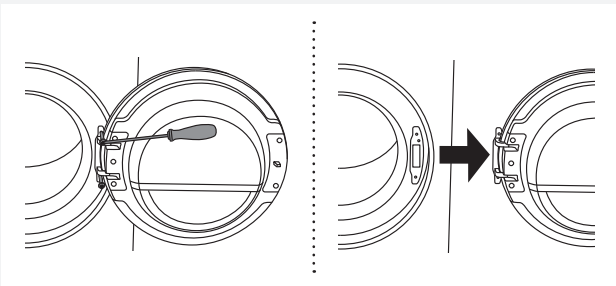
💡 Make sure the tipping guard is "locked"!

CHANGING THE DOOR OPENING DIRECTION

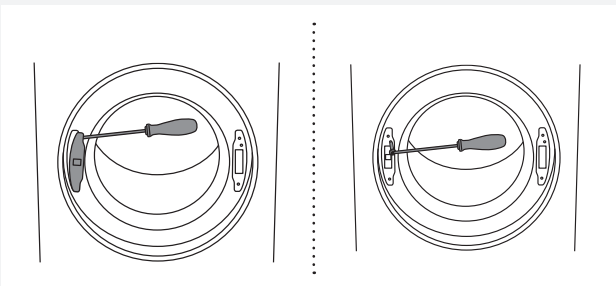
To change the direction of door opening, proceed as follows.



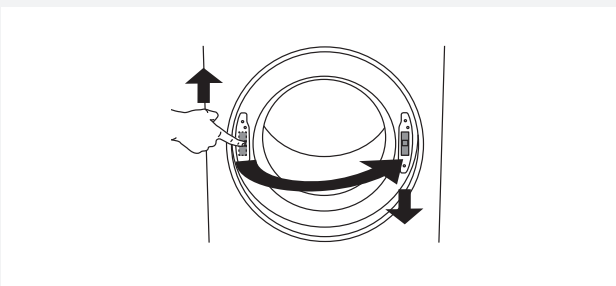
1 Open the door fully.



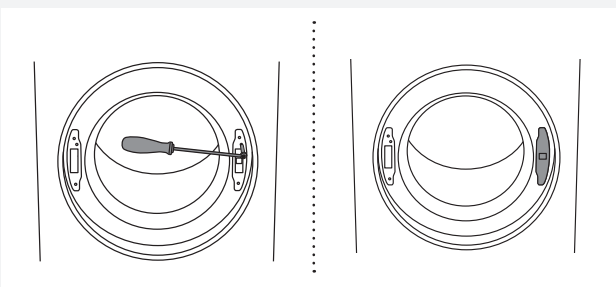
2 Undo the screws and remove the door.



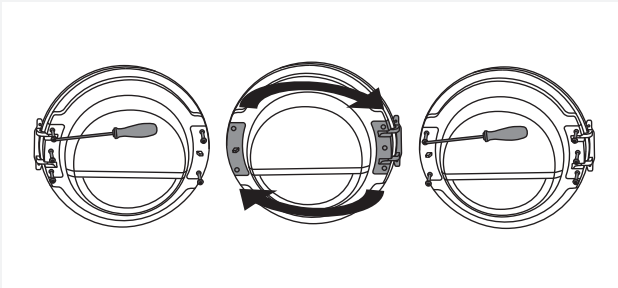
3 Use the screwdriver to remove the door lock cover and undo the screw on the door lock.




4 Push the door lock upwards and remove it. Move it to the other side and push it downwards.

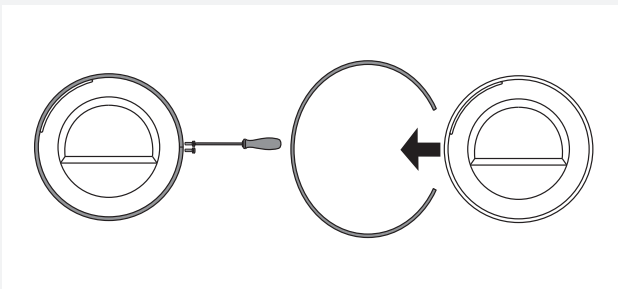


5 Fasten the screw on the door lock. Replace the door lock cover.

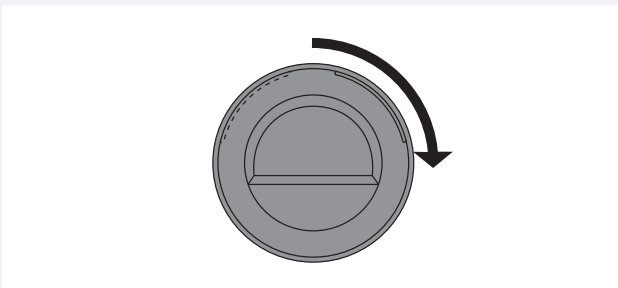


6 Undo the door hinge assembly (left) and the door latch assembly (right), switch their positions, and replace the screws (door hinge assembly to the right-hand side, door latch assembly to the left-hand side).

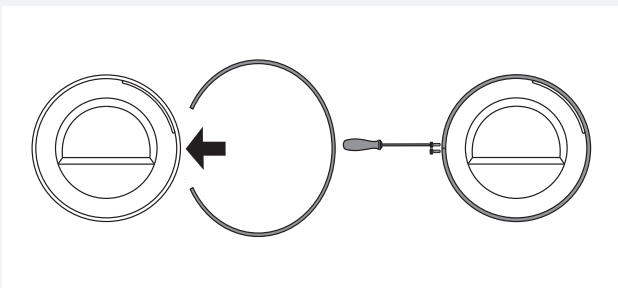
 Use the screwdriver to remove the plastic part more easily.



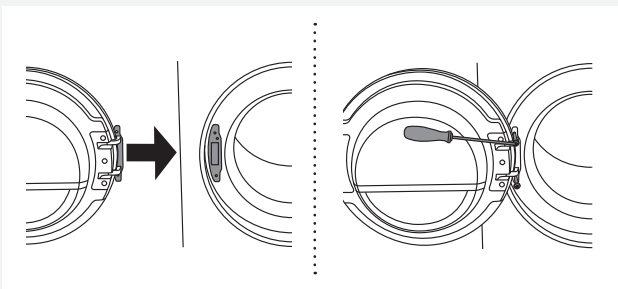
7 Undo the door ring and remove it temporarily.



8 Rotate the door glass cover by 90° so that the sign indicating the opening of the door is on the other side.



9 Rotate the door ring by 180°, install it onto the door, and fasten it with screws.

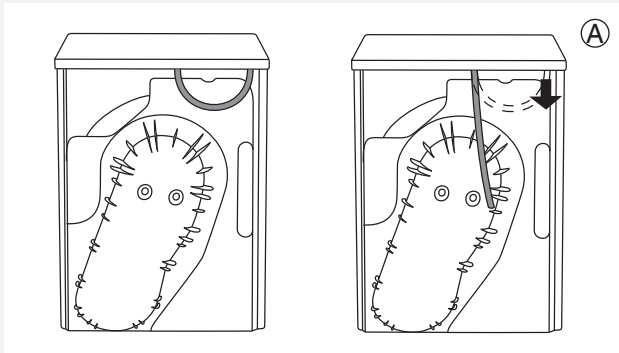


10 Replace the door on the door hinge and fasten the screws.

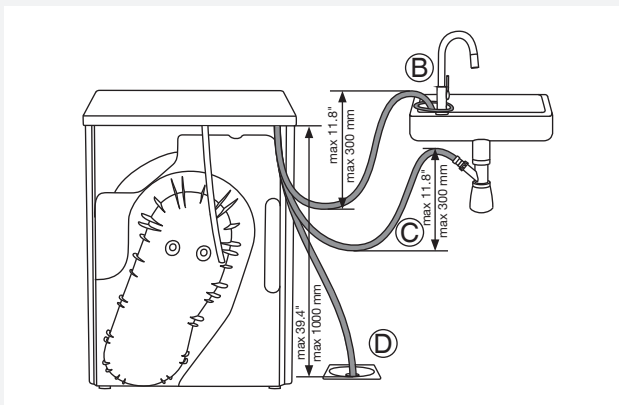
DRAINING THE CONDENSATE

The moisture from the laundry is extracted in the condenser unit and accumulated in the condensate tank. Condensate tank has to be emptied regularly (see chapter "CLEANING AND MAINTENANCE").

Interruption of the drying cycle due to full condensate tank can be avoided by running the condensate discharge hose found at the back of the appliance directly into a drain (see chapter "SYSTEM SETTINGS/ Condensed water").





- 1 Remove the small short hose from the attachment (A).





- 2 Connect the supplied drain hose to the same attachment (A).


Run the condensate drain hose into a drain. Tie the hose onto a tap (B) so that it cannot slip during use. The drain hose can also be fed into the washbasin siphon (C) or directly into the floor drain (D). Then, the water is pumped directly into a washbasin, a siphon, or a floor drain.

 Do not pull the drain hose, and make sure it is not under tension, clamped, or bent.


 If you decide to run the condensate drain hose into a drain, siphon, or washbasin, make sure the hose is securely fastened. This will prevent any water spillage that could result in unexpected damage.

 Always use hoses that are supplied with the appliance.


 If the dryer is connected to an air exhaust system already used for another appliance, a non-return valve must be installed. Return flow into the dryer could damage the appliance and the non-return valve prevents such flow.


 See the separate installation instructions included in the set of documents.

CONNECTING TO THE POWER MAINS



 After installation, the dryer should stand still for two hours before it is connected to the power mains.

Connect the appliance to a grounded power outlet. After installation, the wall outlet should be freely accessible. The outlet should be fitted with a ground contact (in compliance with the relevant regulations).

 The receptacle on the rear of the machine is designed to accommodate ASKO washers ONLY (rated 208–240 V.) To use this receptacle, you must use the ready-fitted plug supplied with the washing machine or an equivalent. ASKO washers rated 208–240 V have two internal fuses of 15 A each. The machine should only be connected to a grounded wall socket.


 This appliance must be properly grounded. Refer to the “Important Safety Instructions” for grounding instructions. The power supply cord must be grounded. If the machine is to be used in a wet area, the supply must be protected by a residual current device. Connection to a permanently wired supply point must be made only by a qualified electrician.


Connection upon delivery


	TYPE: TDXX.XXXXX	MODEL: XXXXXX.X
	Art.No.: XXXXXX/XX	Ser.No.: XXXXXXXX
XXX V ~ XXXX W ⇄ XXA ^X kg		
IPX4 XX Hz Refrigerant: X XXXX		Volume: XXXX

Information about your dryer is indicated on the rating (type) plate.

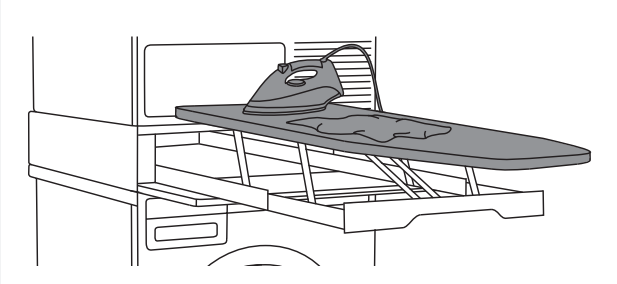
Use the type A differential current protection switch.

 The dryer may not be connected to the power mains using an extension cord.

 Do not connect the tumble dryer to an electrical outlet intended for an electric shaver or hair dryer.

 Any repair and maintenance pertaining to safety or performance should be done by trained experts.

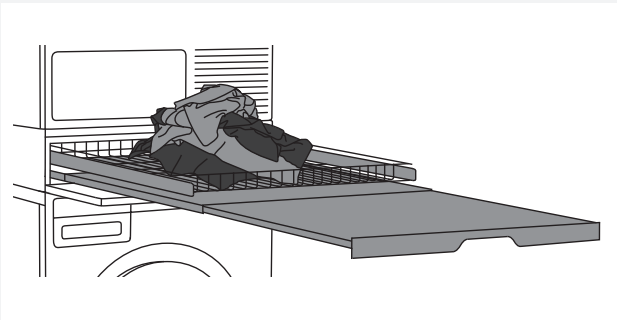
ASKO LAUNDRY CARE - HIDDEN HELPERS*



Laundry care ironing board

The ironing board is a clever solution. It is always handy when you need to iron your clothes, and it can be easily, safely and invisibly stored away when not in use.

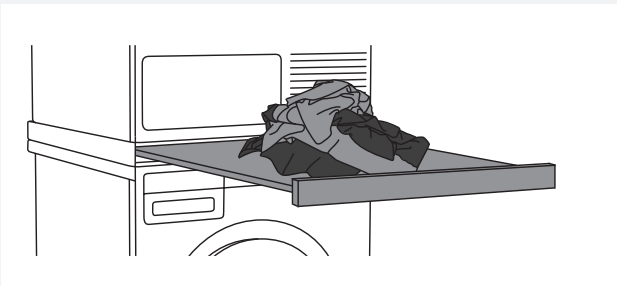
It can be installed between your washer and dryer, or on top of one of them.



Laundry care double

A wire basket and pull-out shelf. It can be used as an additional surface for folding clothes, sorting socks and for storage. The basket is useful for removing and carrying laundry to the wardrobe or workbench for ironing and folding.

It can be installed between your washer and dryer, or on top of one of them.



Laundry care single

Pull-out shelf. It can be used as an additional surface when folding clothes and sorting socks or for storage. It also makes loading and unloading your laundry much easier.

It can be installed between your washer and dryer.



Laundry care basket

A large pull-out basket that is easily accessible via a push-pull door opening. Useful for removing laundry and carrying it to the wardrobe or workbench for ironing and folding.

It can be installed between your washer and dryer, or on top of one of them.

*AVAILABILITY DEPENDING ON MARKET

DENOMINATION	ART. No.
IRONING BOARD HI1153 White	576552
IRONING BOARD HI1153 Titanium	576553
LAUNDRY CARE DOUBLE HDB1153 White	576554
LAUNDRY CARE DOUBLE HDB1153 Titanium	576555
LAUNDRY CARE SINGLE HSS1053 White	576730
LAUNDRY CARE SINGLE HSS1053 Titanium	576732
LAUNDRY CARE HB1153 White	576733

TIPS BEFORE DRYING

This chapter includes several tips on how to prepare the laundry for drying.

LAUNDRY SORTING

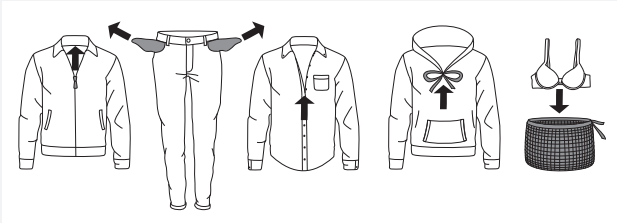
Sort the laundry according to:

- type,
- fabric thickness.

For the most even drying, make sure the laundry is made of a similar material.

CLOTHING

1. Close the buttons, zips, and hook-and-loop fasteners, so that they do not damage the fabric.
2. Turn the pockets inside out.
3. Place very sensitive clothes in a special-purpose laundry washing bag.









💡 Laundry to be dried in the dryer should be spun at a minimum of 1000 rpm. Higher spinning speeds will save energy and cut drying time.

💡 If you decide to dry only one large item, we recommend drying it separately from smaller items of laundry.







LAUNDRY SYMBOLS

Observe the laundry symbols:




Wash cycle

	Normal wash cycle
	Permanent Press or Wrinkle Resistant setting
	Gentle/Delicate setting
	Hand wash only
	Do not wash
	Do not wring. Hang dry, drip dry, or dry flat


Wash water temperature

	Maximum water temp 205 °F/95 °C (EXTRA HOT)
	Maximum water temp 160 °F/70 °C (EXTRA HOT)
	Maximum water temp 140 °F/60 °C (HOT)
	Maximum water temp 120 °F/50 °C (HOT)
	Maximum water temp 105 °F/40 °C (WARM)
	Maximum water temp 85 °F/30 °C (WARM)






Bleach instructions

	Any bleach when needed
	Only non-chlorine bleach
	Do not bleach



Dry clean symbol

	Dry clean only
---	----------------





Tumble dry cycle

	Machine dry
	Normal setting
	Permanent Press or Wrinkle Resistant setting
	Gentle or Delicate setting
	Do not tumble dry

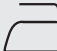





Tumble dry heat setting

	Any heat
	High heat
	Medium heat
	Low heat
	No heat/Air fluff


Special drying instructions


	Line dry or hang to dry
	Drip dry (do not spin or wring)
	Dry flat
	Dry in shade

Ironing instructions


	Ironing is necessary
	High temperature setting
	Medium temperature setting
	Low temperature setting
	Do not iron or press with heat
	Iron without steam

MATERIALS (FABRICS) SUITABLE FOR DRYING IN A TUMBLE DRYER

 Material is suitable for tumble drying. Clothes dried in a tumble dryer will be softer and lighter than air-dried clothes.

 The dryer does not cause any considerable wear of the fabric. The lint collected in the lint filter consists of dust and fabric fragments collected during the use of the laundry.

MATERIALS (FABRICS) THAT MAY NOT BE DRIED IN A TUMBLE DRYER

 This symbol means that the material is not suitable for drying in a tumble dryer.


Never tumble dry the following:

- clothing that was chemically cleaned (or dry-cleaned) at home,
- foam,
- glass fibres.

Static electricity

To reduce the risk of static electricity in the laundry after tumble drying, you can:

- Use fabric softener when washing.
- Wait five minutes after the drying program ends before opening the door and removing the laundry from the dryer.

 You can stop the tumble dryer by pressing the Stop button for three seconds or by opening the door. In both cases the program is stopped and starts from the beginning if restarted.

If you do not want to restart the program, immediately remove all laundry and spread it out to allow the heat to dissipate.

DRYING PROCESS

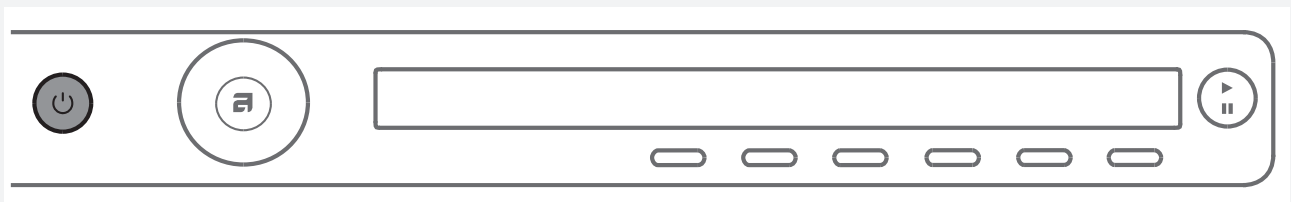
⚠ WARNING - To reduce the risk of electric shock or injury to persons, read the "IMPORTANT SAFETY INSTRUCTIONS" section, before operating this appliance.

STEP 1: SORT THE FABRICS.


See chapter "TIPS BEFORE DRYING"

💡 Empty the pockets. Coins, nails etc. could damage the machine and the fabric.

STEP 2: TURN ON THE MAIN SWITCH.

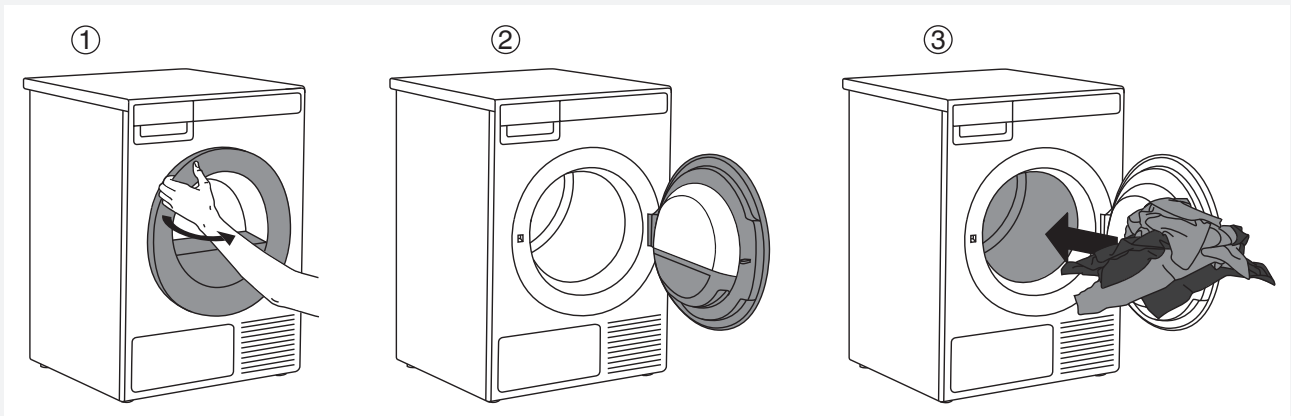


Turning on / Turning off

Press the  on/off button.

STEP 3: OPEN THE DRYER DOOR AND INSERT THE LAUNDRY.

Open the dryer door towards you.



Place the laundry into the empty dryer drum. Make sure there aren't any other objects among the laundry. Such objects could melt and cause damage to the dryer or your laundry.

Do not overload the drum! (See the program table on the rating plate and adjust the load accordingly.) If the dryer drum is overloaded, the laundry will be more wrinkled and not dried as thoroughly.

💡 With some models, the dryer drum is lit as well.


💡 The light in the dryer drum is not suitable for any other use.

💡 The light in the dryer drum may only be replaced by the manufacturer, a service technician or an authorized person.

STEP 4: CHOOSE THE DRYING PROGRAM.

Choose the program by rotating the program selector knob in either direction.




The program selector knob can be used when arrows  appear on the display. Select the program based on the type and remaining moisture of the laundry.

Anticipated program duration is indicated on the display.


Extra program settings can also be selected for each program. See STEP 5.

Choose between the following programs:

Program	Max. kg* (lbs)	Description
1. AUTO EXTRA DRY (Automatic intensive drying)	11 (24.2)	Use this program for thicker multi-layered non-sensitive cotton laundry. After drying, it will be completely dry and ready to be stored in the cupboard.
2. AUTO DRY	11 (24.2)	Use this program for thicker non-sensitive cotton laundry. After drying, it will be completely dry and ready to be stored in the cupboard.
3. AUTO NORMAL DRY 	11 (24.2)	Use this program for thicker non-sensitive cotton laundry of approximately the same thickness. After drying, it will be dry or slightly moist.
4. AUTO IRON DRY	11 (24.2)	Use this program for non-sensitive cotton laundry. After drying, it will be ready for ironing.
5. AUTO JEANS	4 (8.8)	This program is suitable for drying jeans and clothes with extra-thick seams.
6. AUTO SYNTHETICS	3.5 (7.7)	Use this program for sensitive laundry made of a mixture of synthetic and cotton fibres. After drying, the laundry will be slightly moist.
7. AUTO TERRY	5 (11)	This program is suitable for large and small items made of thick terry such as towels and bathrobes.
8. AUTO DOWN	1.5 (3.3)	Use this program to dry textiles stuffed or padded with down (pillows, duvets, jackets etc.). Dry large items separately and use the extra dry function or the time program if necessary.
9. BEDDING	5 (11)	Use this program for larger items. When the program is complete, they will be completely dry. Adjusted drum rotation prevents the laundry from tangling.

Program	Max. kg* (lbs)	Description
10. SILK AND WOOL	2 (4.4)	This short program is intended for softening or fluffing of clothes made of wool and silk, which have to be dried thoroughly according to manufacturer's instructions.
11. SHIRTS	2 (4.4)	Use this program to dry shirts and blouses. Adjusted drum rotation prevents the laundry from creasing.
12. STEAM WRINKLE CARE	3 (6.6)	Use this program to straighten any creases with steam (for seasonal clothing, preparing the laundry for easier ironing etc.).
13. STEAM REFRESH	2 (4.4)	Use this program to refresh the laundry with steam (for laundry that does not yet need washing, only refreshing).
14. QUICK PRO	2 (4.4)	Use this program for non-sensitive laundry washed with a quick program.
15. TIME PROGRAM	4 (8.8)	Use this program for non-sensitive laundry that is still slightly moist and has to be thoroughly dried. In the time program, remaining moisture is not detected automatically. If the laundry is still damp after the program is complete, repeat the program; if it is too dry and therefore creased and rough to touch, the drying time you selected was too long. Program duration can be adjusted from 30 minutes to 4 hours (in 15-minute increments).
16. AIRING	2 (4.4)	This program does not use a heater. Use it to refresh your clothes. Program duration can be adjusted from 15 minutes to 4 hours (in 15-minute increments).
17. SYSTEM SETTINGS		Use the program selector knob to select System Settings. Confirm the selection by pressing ENTER (button "2"). Then, use the program selector knob to scroll the list of settings. The following options are available: <ul style="list-style-type: none"> - Child Lock, - Language (language selection), - Programs (set of programs), - Display (display unit: contrast), - Sounds, - Condensed water, - Reset. <p>See chapter "SYSTEM SETTINGS".</p>

* Max. kg (lbs) dry load

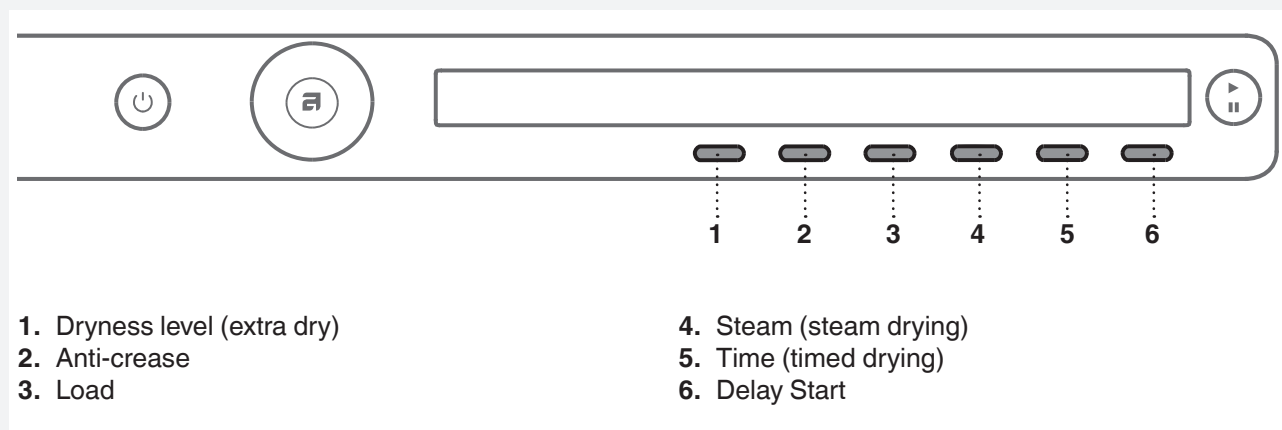
 If your laundry is not dried to the desired dryness level, use extra program settings or use a more suitable program.

STEP 5: CHOOSING THE PROGRAM SETTINGS

Using the program settings, the drying programs can be further adjusted to your preferences.

Some program settings may not be available for your selected program.

Selected program settings will remain stored after the end of the drying cycle and may be changed subsequently (except for delayed start which is not stored after the drying is complete).



Choose the program settings before pressing the START button.

When the drying program is in progress, program settings cannot be changed.

Press and hold the button under a program setting to display the information (INFO) about it.

Following are the program settings that may be selected using the buttons 1 to 6:

1. Dryness level (extra dry)

By pressing the button 1, you can choose between extra dryness levels (+, ++, +++).

Each time the button is pressed, the final level of laundry dryness and drying time will change.

2. Anti-crease

This function pertains to what happens after the drying cycle.

By pressing the button 2 you can choose the duration of the anti-crease program from 0 hours (I)⁰ to 4 hours (I)⁴, in 1-hour increments.

3. Load

By pressing the button 3, you can choose between loads of the dryer.

<input type="radio"/>	Full load
<input type="radio"/>	Small load
<input type="radio"/>	Partial load

Selection of actual load affects the initially displayed anticipated drying time.


4. Steam (steam drying)

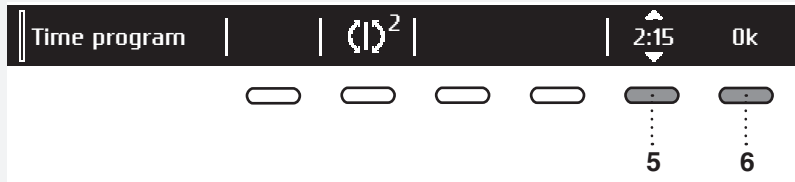
By pressing the button 4, you can switch the steam drying on or off.

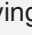
Steam finish gives the laundry a steam treatment, like straightening the creases and refreshing the laundry with steam in the end of program cycle (only for programs in which steam treatment is possible).

5. Timed drying

First, use the program selector knob to select the Timed Dry program.

Press the button 5  to select a drying time from 30 minutes to 4 hours, in 15-minute increments.




Use the button 6 (OK) to confirm the selected drying time. Press the **Start/ Pause**  button to start the drying process.

6. Delay Start

Press the button 6 to choose the delayed start when you wish the drying program to start after a certain period of time.

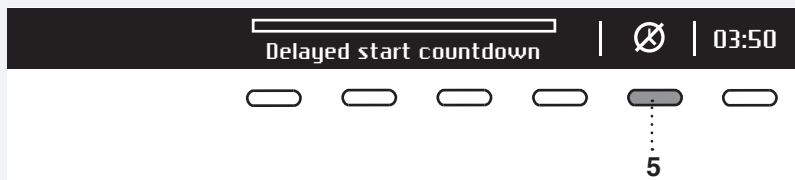



Press the button 6 for  to appear. Use the program selector knob or the button 6 to set the delay from 30 minutes to 6 hours in 30-minute increments, and then from 6 hours to 24 hours in 1-hour increments.


Press the button 5 (OK) to confirm the selected start delay time.

Press the **Start**  button to start.

When the countdown reaches zero, the selected drying program will start automatically.



To cancel the delay and start the drying process immediately, press the button 5 .


When Start delay time is once set, it is not possible to change it; the only possibility is to »Skip it « with pressing on button  and immediately continue with chosen program.

If you do not take any action for 5 minutes, the display will switch to standby mode.

Press the ON/OFF button to reactivate it. The countdown to the start of the drying cycle will be displayed.

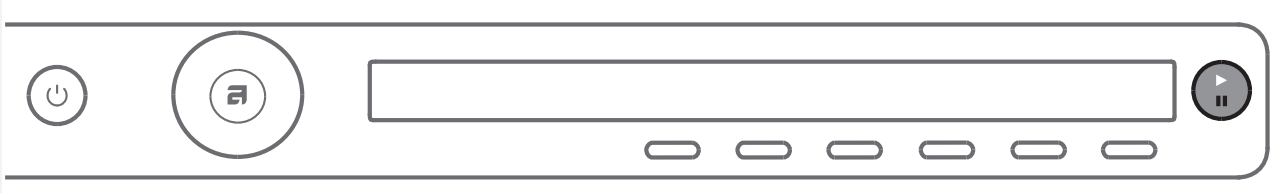
If the dryer is in the standby mode, the display will switch on 1 minute before the start of the drying cycle.

After the countdown, drying time will be indicated on the display unit.

 Delayed start cannot be set for the favourite programs.

STEP 6: CLOSE THE DOOR AND START THE DRYING PROCESS.

Close the dryer door and press the **Start/Pause** button.



- ▶ Start (pressed briefly – start/resume)
- || Pause (pressed briefly – drying temporarily suspended)
Cancel (press and hold the button for 3 seconds)



Remaining time

Depending on the selected program and load, anticipated drying time will be displayed in hours and minutes. Actual drying time will depend on the selected program, load, type of laundry, spinning rate etc. Actual drying time may be longer or shorter than initially displayed.



Pausing, stopping or changing the program



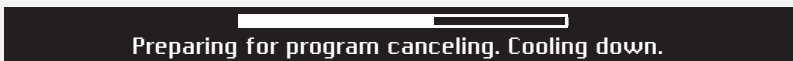
To pause a program, briefly press the **Start/Pause** button.

To resume the program, press the **Start/Pause** button again.

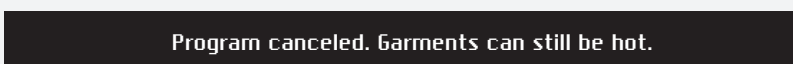


The drying program may also be paused by opening the dryer door.

To resume the program, simply close the door and press the **Start/Pause** button.




To stop and cancel the washing program, press the **Start/Pause** button and hold it for 3 seconds.



The selected program will be stopped and the cooling stage will begin. Cooling time depends on the selected program.

Only after the cooling is complete, you can use the program selector knob to select a new program and press the **Start/Pause** button.

 The final drying cycle includes a cooling down stage without heater operation. It makes sure the laundry is of suitable temperature at the end of the program and that it can be taken from the dryer without risk of touch hot clothes.

A drying program can be paused using the ON/OFF button. The dryer will switch off. Press the Start button to resume the program.

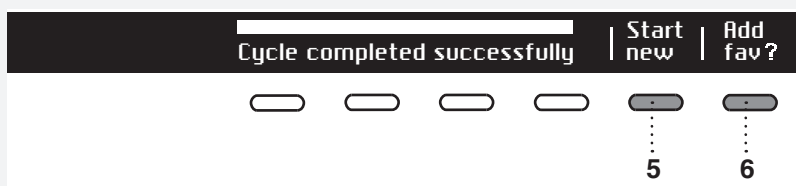
STEP 7: END OF PROGRAM



After the end of the drying program, the display will indicate that the program has been successfully completed ("Cycle completed successfully").

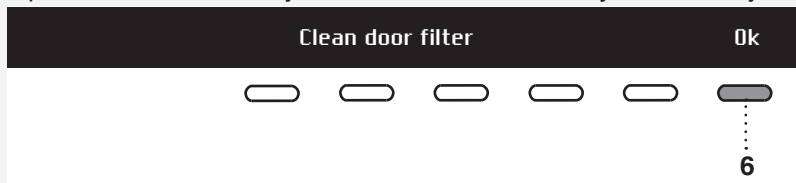


If you have selected the "Anti-crease" option, the dryer will continue to operate after the end of the drying cycle for the amount of time specified upon selection of this program setting.



After the drying cycle, you have the possibility to save the program as a favorite program (see "Favourite programs").

Open the door towards you and remove the laundry from the dryer.





Clean the net filter in the door (see chapter "CLEANING AND MAINTENANCE").


Make sure the dryer drum is empty, then close the door.

5 minutes after the end of the program or last activation, the display will switch off to standby mode in order to save power.

The display will light up again if you press the ON/OFF button or open the dryer door.

 After each drying cycle, clean the net filter in the door and empty the condensate tank. See chapter "CLEANING AND MAINTENANCE".

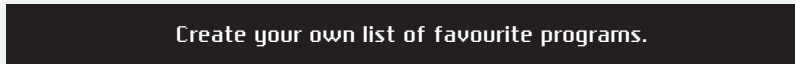
 A clogged net filter and heat pump filter may result in activation of the automatic overheating switch-off device. Clean the filter, wait for the machine to cool down, and try running it again. If the dryer still fails to start, call a service technician.

 After the drying process, unplug the dryer power cord from the power outlet.

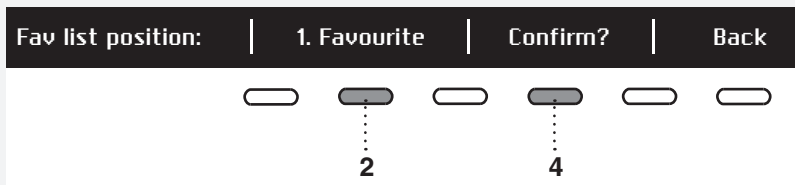
Favourite programs/Add to fav?



After the end of the drying program, you can use the button 6 to store the program, including all extra settings, as your favourite program.



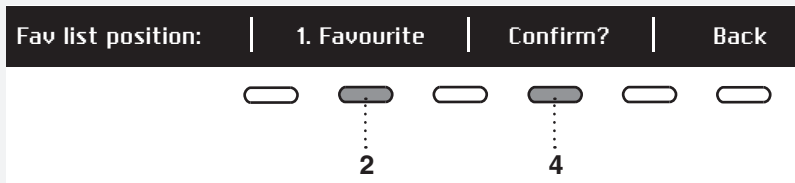
Up to 4 favourite programs can be stored.



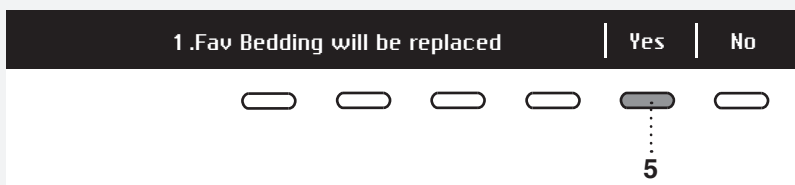
Choose the favourite program position (number) using the button 2; the most recently used program, including all settings, will be offered. To store a program, confirm with the button 4.

Changing a favourite program

If you wish to store a program after the end of the drying cycle, but there is no more room for another favourite program (only 4 favourite program slots are available), then one of the existing stored favourite programs can be substituted with a new one.



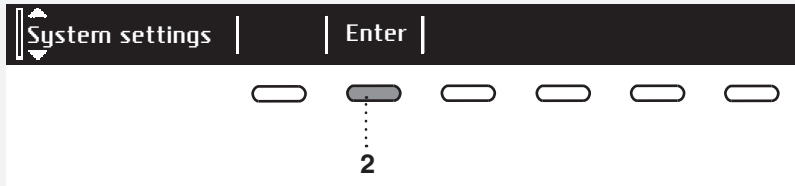
Use the button 2 to scroll through the list of Favourite programs. Press the button 4 to confirm the program to be replaced.



Confirm the replacement by pressing the button 5.

If you do not take any action for 5 minutes, the display will switch to standby mode. To activate the display, press the ON/OFF button or open the dryer door.

SYSTEM SETTINGS



In the main menu, use the program selector knob to select System Settings. Confirm the selection by pressing the button 2.

Then, use the program selector knob to scroll the list of settings that can be changed.

- Child Lock
- Language
- Programs
- Display (display unit: contrast)
- Sounds
- Condensed water
- Reset

Use the button 6 (BACK) to return to System Settings or to the main menu.

Press the INFO button to display brief information about the setting.

CHILD LOCK



Child lock can be activated by pressing the button 1 . This will prevent children from switching on the machine.



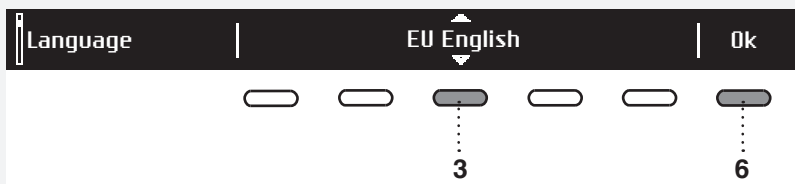
Press the button 1 to deactivate the child lock.

When the child lock is activated, no other function can be selected.



To temporarily (for 3 minutes) switch off the child lock, press the 1 and 4 buttons simultaneously for 3 seconds.

LANGUAGE



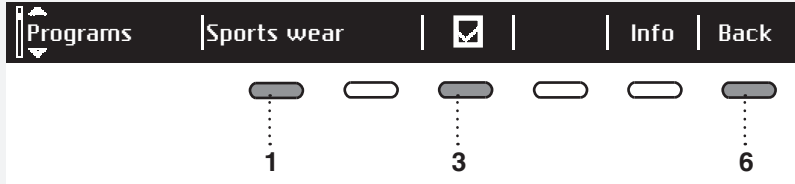
You can choose between 24 languages. Press the button 3 for to appear. Use the program selector knob or the button 3 to scroll the list of languages. Use the button 6 (OK) to confirm the selected language.



Use the button 6 to return to System Settings.

PROGRAMS

The main menu includes the entire set of programs that you can choose using the program selector knob. This setting allows only displaying the selected program in the main menu.



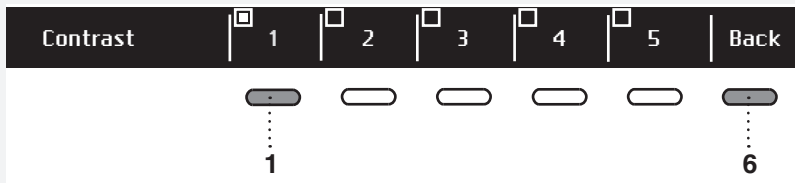
Press the button 1 for to appear. Use the program selector knob or the button 1 to select a program. Use the button 3 to set whether this program is to be displayed or not: On / Off .

Use the button 6 to return to System Settings.

DISPLAY UNIT



Set the Contrast.

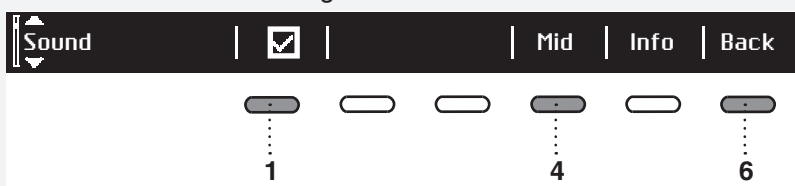


Use the buttons 1 to 5 to set the contrast.

Use the button 6 to return to "System Settings".

SOUNDS

Choose whether audible signals are switched on or off.



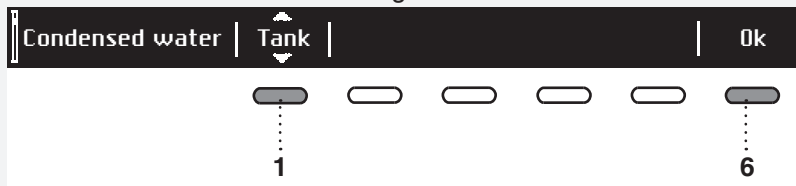
Use the button 1 to switch acoustic signal on or off .


Use the button 4 to choose between the following settings: low, mid, and high. As you scroll through the options, a sample audible signal will be sounded.

Use the button 6 to return to System Settings.

CONDENSED WATER

You can choose between draining condensed water into a condensate tank or directly into the drain.



Press the button 1 for  to appear. Use the program selector knob or the button 1 to choose between following: "Tank" – run condensate water into a condensate tank "Drain" – run condensate water into a drain

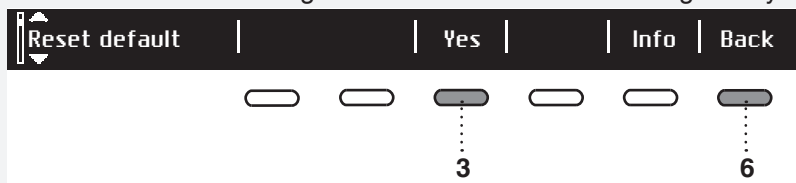


If you decide to choose option "Drain", it is necessary to observe how to connect drain hose (see chapter "INSTALLATION AND CONNECTION / Draining the condensate").

Press the button 6 to return to "System Settings".

RESET


This means that all settings will return to the default settings and your own settings will be deleted.



Confirm the selection by pressing the button 3 (YES).

Press the button 6 to return to System Settings.

SOUNDS

 In the initial stage of drying or during drying, the compressor and the pump may cause noise which, however, does not affect the dryer operation.

Humming sound: this is the sound of the compressor unit. The level of noise depends on the program and the drying stage.

Whirring sound: from time to time, the compressor unit is ventilated.


Pumping sound: the pump is pumping the condensate into the condensate tank.

Clicking sound: clicking noise is caused by automatic cleaning of the heat exchanger (compressor).

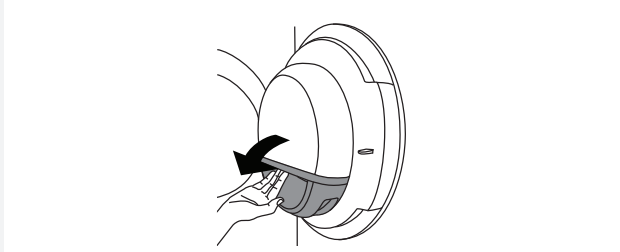
Swishing water sound: can be heard during automatic cleaning.

Rattling sound: can be heard during drying if laundry has any hard parts (buttons, zippers etc.)

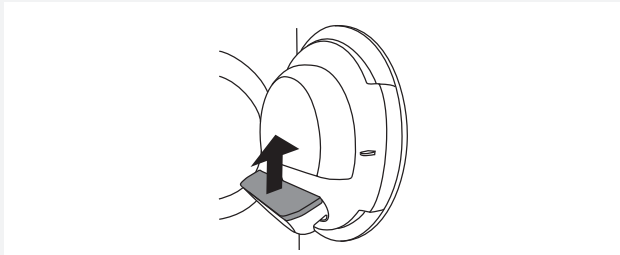
CLEANING AND MAINTENANCE

 Before cleaning, make sure to switch off the appliance and disconnect it from the power mains (unplug the power cord from the outlet).

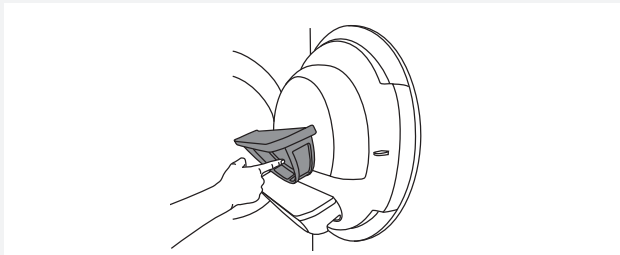
CLEANING THE DOOR NET FILTER IN THE DOOR



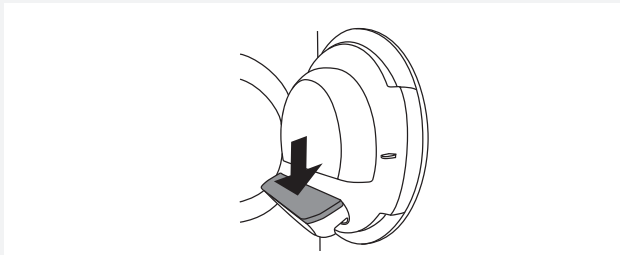
1 Open the filter housing.



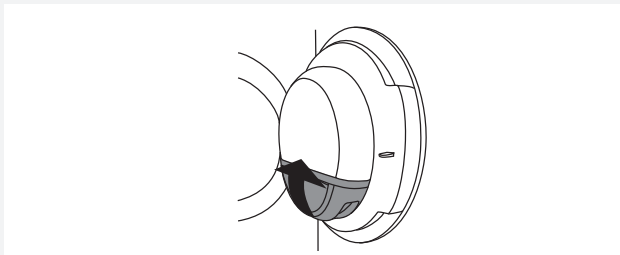
2 Pull out the net filter.




3 Gently scrape the filter to remove the lint lining (fibres and threads).



4 Reinstall the net filter.



5 Close the filter housing.

 Make sure the net filter is correctly inserted into the filter housing.

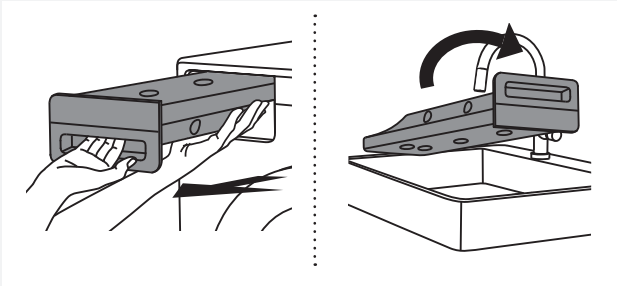
 Clean the door net filter after each drying cycle.

 Never operate without a door net filter or if the door net filter is damaged.

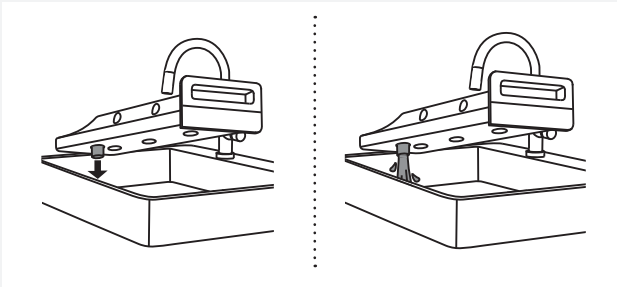
EMPTYING THE CONDENSATE TANK

💡 After each drying cycle, empty the condensate tank.

If the condensate tank is overflowing the drying program will be paused automatically. A warning will appear on the display unit that the condensate tank has to be emptied. (Disregard this warning if you fed the condensate discharge hose into a drain, siphon, or a sink.)

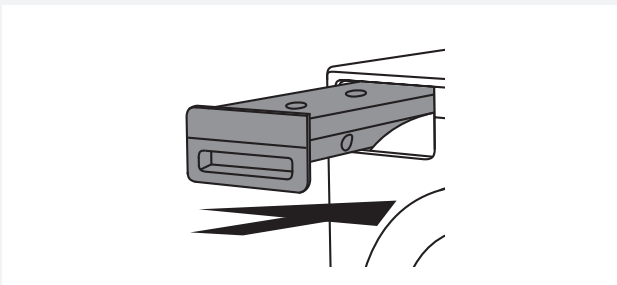


1 Pull out the condensate tank from the dryer, then turn it upside down over a washbasin, sink, or any suitably sized vessel.



2 Discharge the water through the condensate drain opening.

To make draining the tank easier, pull out the nozzle at the condensate drain.



3 Replace the condensate tank into the dryer housing.

💡 Water from the condensate tank is not potable. If thoroughly filtered, it can be used for ironing.

⚠️ Never add chemicals or fragrances into the condensate tank.

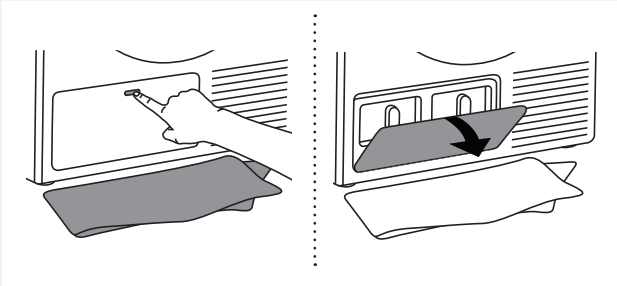
💡 Condensate tank does not require draining if the drain hose is connected directly to a washbasin or a bathroom floor drain (see chapter "INSTALLATION AND CONNECTION/Draining the condensate").

💡 Before moving the dryer or before storing it in a non-heated room during the winter, the condensate tank has to be emptied.

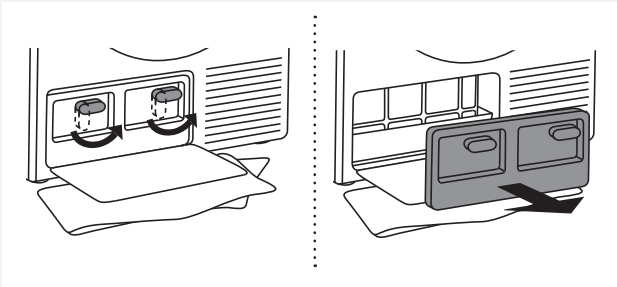
CLEANING THE HEAT PUMP FILTER

💡 Do not touch the inner metal parts of the heat exchanger with bare hands. Danger of injury on sharp parts. Use appropriate protection gloves when cleaning the heat exchanger.

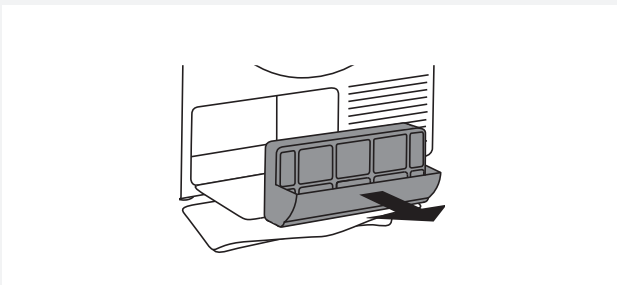
💡 Incorrect cleaning of the metal fins of the heat exchanger can permanently damage the tumble dryer. Do not press on the metal fins with hard objects like for example the plastic tube of a vacuum cleaner.



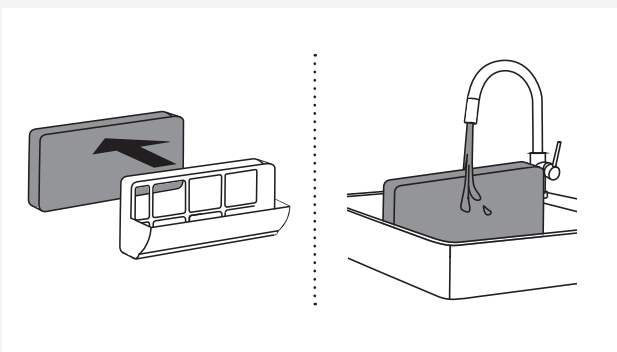
1 During cleaning, some water may be spilled. It is therefore recommended to place an absorbent cloth on the floor. Open the outer cover.



2 Hold the levers on the inside cover and rotate them upwards. Remove the inside cover.



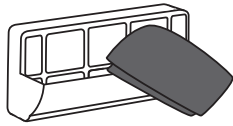
3 Use the handle to pull out the heat pump filter.



4 Pull the foam part of the heat pump filter from the housing. Wash it under running water and dry it before replacing it in the filter housing.

The filter may be washed in the washing machine, with the rinse program on low spin speed. Dry the filter before replacing it in the filter housing.

💡 Clean the foam filter at least after every 10 drying cycles or if necessary.

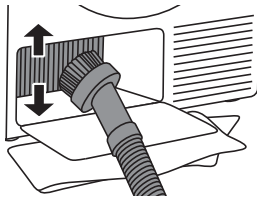


5 Use a soft dry cloth to also clean the heat pump filter housing and net.

💡 Lower part of the hosing contains a strainer which should be cleaned thoroughly.

💡 Clean the heat pump filter housing and net after every 10 drying cycles or if necessary.

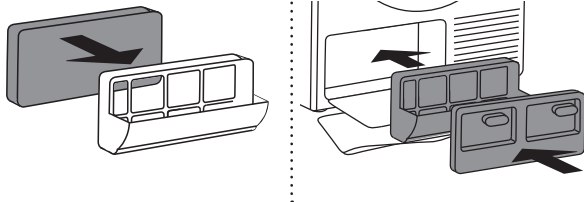
With automatic heat pump net filter cleaning (only available in some models), a few drops of water may drip on the floor after the filter is removed; therefore, lay a cloth on the floor.



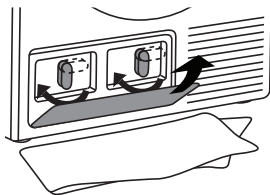
6 The dust and dirt in the metal fins of the heat exchanger can be cleaned with a vacuum cleaner and a soft brush attachment.

Without pressing, gently move the brush attachment only in the direction of the metal fins from top to bottom. Too much pressure can damage or bend the metal fins of the heat exchanger.

We recommend you clean the heat exchanger at least every twelve months.



7 Reassemble the foam filter and the filter housing.

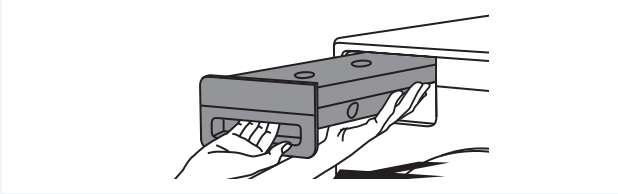


8 Reinstall the inside cover and rotate the levers clockwise to the vertical position. Close the outer cover.

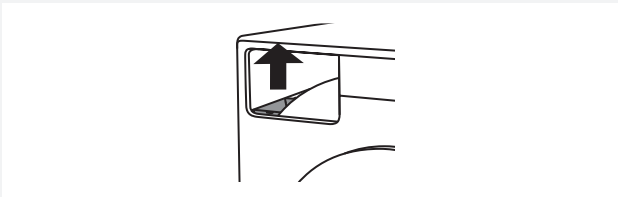
💡 The heat pump filter has to be correctly placed into its slot. Otherwise, the heat exchanger installed inside the dryer may be clogged.

CLEANING THE STEAM GENERATOR TANK FILTER AND SELF-CLEANING SYSTEM

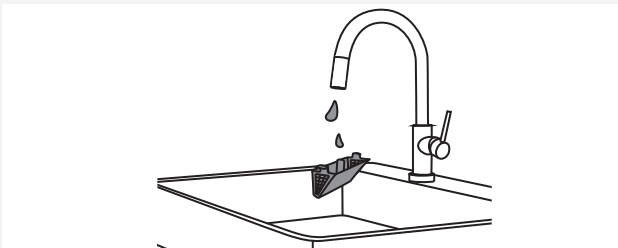
💡 Each time you empty the condensate tank, clean the steam generator tank filter and self-cleaning system as well. The filter is located in the tank housing (visible when the condensate tank is removed).



1 Remove the condensate tank.



2 Remove the filter from the slot in the condensate tank housing.




3 Clean the filter thoroughly under running water. If necessary, clean the filter slot as well.

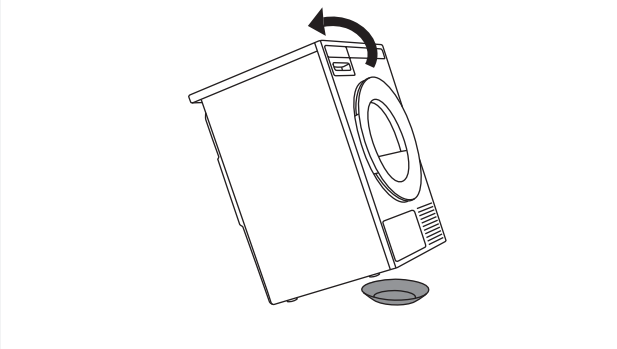
💡 When pulling out the filter, make sure not to discard the lint and fibre accumulated during operation back inside, as this may clog the system.

💡 Replace the filter correctly into the slot (otherwise, the filter will not perform its function, which may result in clogging of the system).

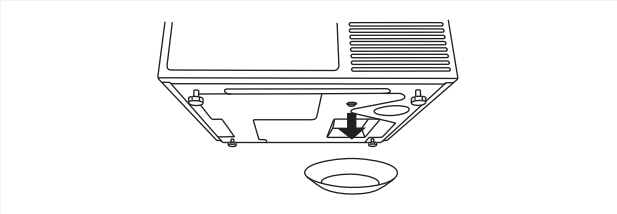
💡 The frequency of cleaning the steam generator vessel filter is the same, if you run drain hose for condensed water directly into the drain, siphon or washbasin.

EMPTYING THE STEAM GENERATOR TANK

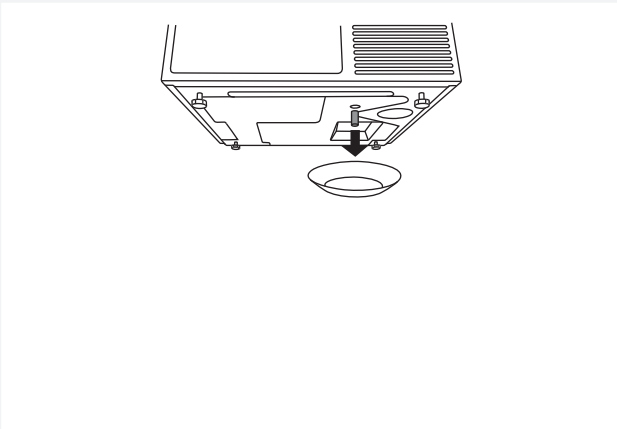
 Before transporting a dryer that has been previously used, the steam generator tank must also be emptied. Otherwise, water from the tank may spill into the dryer interior.



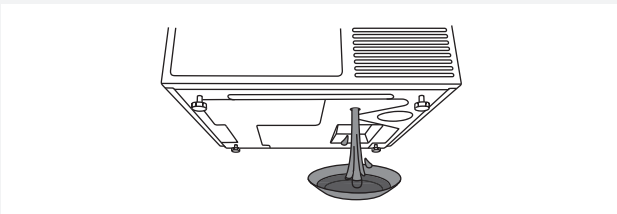
1 Move the dryer approximately 40 cm (15.75") away from the wall and tilt it backwards.



2 The steam generator tank discharge (emptying) plug is located on the bottom (front left-hand side).

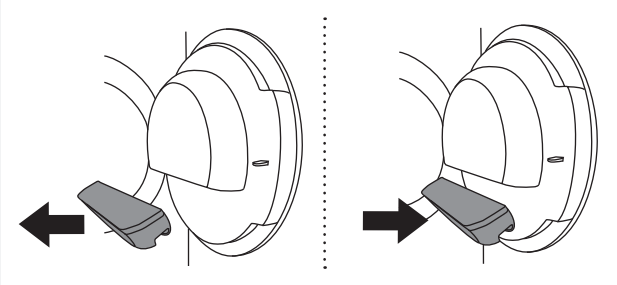


3 Place an empty vessel under the plug (approximately 2 litres (0.5 gal)) and pull out the plug.

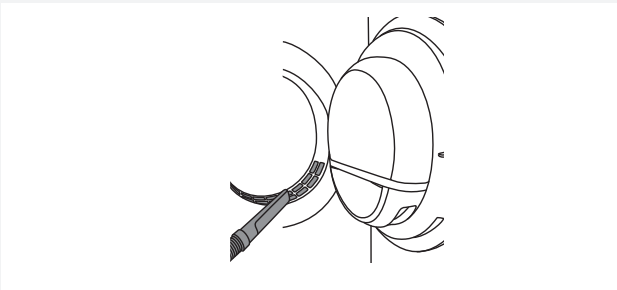


4 When the water is discharged, reinstall the plug (if the plug is not reinstall, water will spill from the dryer during the next washing cycle).

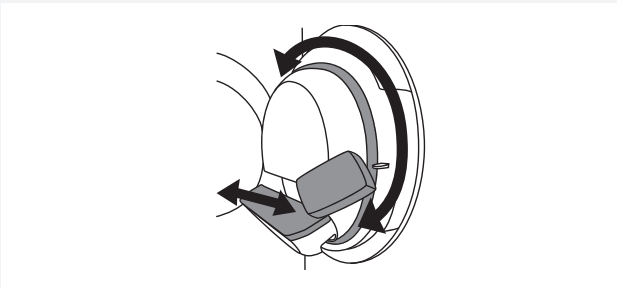
ADDITIONAL INFORMATION REGARDING CLEANING



If you have inadvertently removed the **entire** net filter housing in the dryer door, replace it in the same position.



Opening on the lower side of the door should occasionally be cleaned with a vacuum cleaner.



If necessary, clean the filter housing and door gasket as well.

CLEANING THE APPLIANCE EXTERIOR

Clean the appliance exterior and the display unit using a soft damp cotton cloth and water.

Do not use solvents or abrasive cleaners that could damage the appliance (please observe the recommendations and warnings provided by the manufacturers of the cleaning agents).

Wipe all parts of the dryer with a soft cloth until dry.

💡 Keep the area around the dryer clean and cool. Dust, heat, and humidity will extend the drying time.




💡 Always disconnect the dryer from the power mains before cleaning.

ERRORS AND TROUBLESHOOTING

Disturbances from the environment (e.g. the power grid) may result in various error reports (see Troubleshooting table). In such case:

- Switch off the appliance, wait for 1 minute, switch the appliance back on, and repeat the drying program.
- If the error persists, call an authorized service center.
- You will be able to solve most of the **problems** in dryer operation by yourself (see troubleshooting table below).
- **Repairs** may only be carried out by an adequately trained person.
- Repair or any warranty claim resulting from incorrect connection or use of the dryer shall not be covered by the warranty. In such cases, the costs of repair shall be charged to the user.

 The warranty does not cover the errors or failures resulting from disturbances from the environment (lightning strike, power grid failures, natural disasters etc.).

Problem/error	Cause	What to do?
The machine will not start.	• The main switch is not switched on.	• Check whether the main switch is on.
	• There is no voltage in the power outlet.	• Check the fuse. • Check if the power cord plug is correctly inserted into the power outlet.
There is voltage in the outlet, but the drum does not spin	• Program was not started in accordance with the instructions.	• Re-read the instructions for use again.
... The dryer does not work.	• Door might be open.	• Check if the door is closed properly.
	• The condensate tank is full (only applies to condensation dryer and the dryer with a heat pump).	• Empty the condensate tank (see section "Cleaning and Maintenance") (only applies to condensation dryer and the dryer with a heat pump).
	• Delayed start might be activated.	• To cancel the Delayed Start option, press 5 the Skip button.
The machine stops operating completely during a program.	• The door net filter may be clogged. As a result, the temperature in the dryer rises, which in turn causes overheating, and the dryer switches off.	• Clean the door net filter (see chapter "CLEANING AND MAINTENANCE"). • Wait for the machine to cool down, and try running it again. If the dryer still fails to start, call service centre.

Problem/error	Cause	What to do?
Laundry not dried or drying takes too long.	• Filters are not clean.	• Clean the filters (see chapter "CLEANING AND MAINTENANCE").
	• Dryer is placed in a closed room; room that is too cold; or room that is too small and the air overheats as a result.	• Make sure there is adequate supply of fresh air to the dryer; for example, open the door and/or window. • Check if the temperature in the room where the dryer is installed is too high or too low.
	• Laundry was not sufficiently wrung or spun.	• If the load is still wet after completed drying cycle, an appropriate drying program should be run again (after cleaning filters).
	• Amount of laundry dried in the appliance is too large or insufficient.	• Use a suitable program or extra functions.
	• Laundry (such as bedding) gets tangled.	• Close the buttons or zippers on the laundry before drying. Select a suitable program (e.g. the bedding program). • After the drying process, loosen the laundry and select an additional drying program (e.g. timed drying program).
Unevenly dried laundry.	• Laundry of varying types and thickness, and excessive amount of laundry.	• Make sure you have sorted the laundry by type and thickness, whether you have added a suitable amount of laundry to the drum, and whether you have selected a suitable program.
A slight hitting noise appears.	• If the dryer is out of use for a long period of time, the same points of load-bearing elements or components are under stress for a long time, causing temporary deformation.	• The noise will subside without any intervention.
The door opens during drying.	• Excessive load on the door (too much laundry in the drum).	• Reduce the amount of laundry.

FAILURE DISPLAY

In case of a failure while a program is in progress, the relevant Error X is indicated on the display unit.



Press and hold the INFO button to display the error description.

Press the 6 EXIT button to return to Main Menu.

Switch off the dryer and turn it back on.

Errors indicated on the display unit (depending on the model) may include the following:

Problem/error	Error indication on the display	What to do?
Error 0	E0 - Please check user manuals or call service.	Control unit failure. Call service centre.
Error 1	E1 - Thermistor fault. Please check user manuals or call service.	Temperature sensor failure. Call service centre.
Error 2	E2 - Please check user manuals or call service.	Communication error. Call service centre.
Error 3	E3 - Pump failure. Please check user manuals or call service.	Failure on the pump for pumping the condensate into the condensate tank Call service centre.
Error 4	E4 - Please clean filters or call service.	Control unit failure. Clean the filters. See chapter "CLEANING AND MAINTENANCE" or call service centre.
Error 6	E6 - Relay failure. Please check user manuals or call service.	Control unit failure. Call service centre.
Error 7	E7 - Door failure. Please check user manuals or call service.	Control unit failure. Call service centre.
Error 8	E8 - Button failure. Please check user manuals or call service.	Control unit failure. Call service centre.
Error 9	E9 - PB/UI software versions are not compatible.	Call service centre.

INFORMATION before, during, and after the program (depending on the model)

Error indication on the display	What to do?
EN: Steam tank is empty. Please fill water.	Fill the steam tank with distilled water or condensate. Pour the water through the steam tank filter located in the condensate tank housing. See chapter "BEFORE USING THE APPLIANCE FOR THE FIRST TIME".
EN: Steam tank full.	Stop adding condensate or distilled water.
EN: Please close the door before pressing start.	Close the dryer door before starting or resuming the program.
EN: Option not available at this phase of cycle.	This option is not available. Select an option that is still available.
EN: Cycle was interrupted by power failure. Please resume.	Press the Start /Pause button to restart or resume the program.
EN: Please empty the tank before resuming a cycle.	See chapter "CLEANING AND MAINTENANCE".
EN: Clean door filter.	See chapter "CLEANING AND MAINTENANCE".
EN: Clean the condenser unit.	See chapter "CLEANING AND MAINTENANCE".
EN: Please empty the water tank and clean door filter.	See chapter "CLEANING AND MAINTENANCE".
EN: Child lock is on. Press buttons for 3 sec to unlock.	See chapter "SYSTEM SETTINGS".

SERVICE AND WARRANTY

LIMITED WARRANTY – RESIDENTIAL APPLIANCES

This Limited Warranty covers parts and labor, except as set forth in this Limited Warranty. Service must be provided by an authorized ASKO service company. YOUR SOLE AND EXCLUSIVE REMEDY UNDER THIS LIMITED WARRANTY SHALL BE PRODUCT REPAIR AS PROVIDED HEREIN. This Limited Warranty is valid only when the ASKO Product is used in the country in which it was purchased. Proof of original purchase date is required to obtain service under this Limited Warranty. This warranty only applies to the original purchaser and is non-transferable.

Residential ASKO Products Used Exclusively for Household/Personal Purposes:

Two (2) Years limited Warranty – Any warranty service claims for residential ASKO Products must be filed with ASKO within two (2) years from date of purchase. Service will be provided during normal business hours.

Residential ASKO Products Not Used Exclusively for Household/Personal Purposes or used Commercially or used in Marine, Mobile or Aeronautical Applications:

One (1) Year limited Warranty – Any warranty service claims for ASKO Products not used exclusively for household and personal use, or used commercially or used in marine, mobile, or aeronautical applications must be filed with ASKO within one (1) year from date of purchase. Service will be provided during normal business hours.

ITEMS EXCLUDED FROM WARRANTY

This limited warranty does not cover:

1. Replacement parts or repair labor if the ASKO Product is used in a manner that is inconsistent with published user or operator instructions and/or installation instructions.
2. Service calls to correct the installation of the ASKO Product, to instruct you on how to use the ASKO Product, to replace or repair house fuses, or to correct house wiring or plumbing.
3. Consumable items and parts, such as filters.
4. Damage resulting from accident, alteration, misuse, abuse, negligence, fire, flood, acts of God, improper use, improper installation, installation not in accordance with electrical or plumbing codes, or use of products not approved by ASKO, as well as any attempted repair by other than authorized ASKO service companies.
5. Cosmetic damage, including scratches, dents, chips or other damage to the finish of the ASKO Product, unless such damage results from defects in materials or workmanship and is reported to ASKO within 5 days from date of purchase.
6. Pickup and delivery. The ASKO Product is intended to be repaired in your home.
7. Repairs to parts or systems resulting from unauthorized modifications made to the ASKO Product.
8. Expenses for travel and transportation for product service if the ASKO Product is located in a remote area where service by an authorized ASKO service company is not available.
9. The removal and reinstallation of the ASKO Product if it is installed in an inaccessible location or is not installed in accordance with ASKO's published installation instructions.
10. Replacement parts or repair labor on ASKO Products with original model/serial numbers that have been removed, altered or cannot be easily determined.

DISCLAIMER

YOUR SOLE AND EXCLUSIVE REMEDY UNDER THIS LIMITED WARRANTY SHALL BE PRODUCT REPAIR AS PROVIDED HEREIN. EXPRESSLY DISCLAIMED ARE ALL OTHER EXPRESS AND IMPLIED WARRANTIES, INCLUDING ANY IMPLIED WARRANTIES OF MERCHANTABILITY AND FITNESS FOR A PARTICULAR PURPOSE. Some jurisdictions do not allow exclusion or limitations regarding warranty rights. This Limited Warranty gives you specific legal rights and you may have other rights that vary from jurisdiction to jurisdiction. Attempted repair by any person other than an authorized ASKO service company will void this Limited Warranty.

Limitation of liability

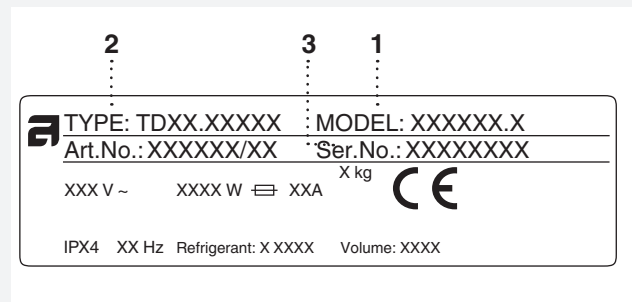
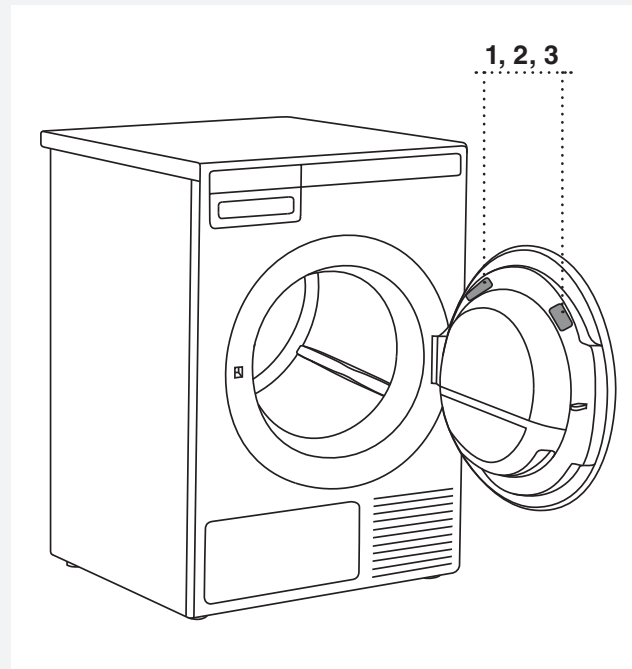
IN NO EVENT SHALL ASKO OR THE MANUFACTURER AND THEIR RESPECTIVE PARENTS, SUBSIDIARIES AND AFFILIATES BE LIABLE FOR CONSEQUENTIAL, INCIDENTAL, EXEMPLARY, PUNITIVE OR SPECIAL DAMAGES. IN NO EVENT SHALL ASKO OR THE MANUFACTURER AND THEIR RESPECTIVE PARENTS, SUBSIDIARIES AND AFFILIATES BE LIABLE FOR DAMAGES OTHER THAN ACTUAL DAMAGES AND IN NO EVENT FOR DAMAGES IN EXCESS OF THE PRICE PAID FOR THE ASKO PRODUCT AS TO WHICH A CLAIM IS MADE. Some jurisdictions do not allow the exclusion or limitation of incidental, consequential or other damages, so these limitations and exclusions may not apply to you. This Limited Warranty gives you specific legal rights. You also may have other rights that vary from jurisdiction to jurisdiction.

ASKO CUSTOMER CARE

Read the chapter Troubleshooting before contacting the service department. If you have encountered a problem that you cannot resolve, please contact your nearest dealer.


USA us.asko.com, +1-800-898-1879
CANADA ca.asko.com, +1-800-361-0799,
service@distinctive-online.com
MEXICO asko.com/mx, +52-800-400-4372,
atencionalcliente@sub-zeromx.com

When making contact, provide the details on the serial number plate. Include the service number (1), the article number (2), and the serial number (3).



SERVICE AFTER EXPIRATION OF LIMITED WARRANTY

For information about obtaining parts and labor after expiration of this Limited Warranty or arising outside the scope of this Limited Warranty, please contact ASKO Customer Care.

 Repair or any warranty claim resulting from incorrect connection or use of the dryer shall not be covered by the warranty. In such cases, the costs of repair shall be charged to the user.

TECHNICAL INFORMATION

TECHNICAL INFORMATION

Height	850 mm (33 15/32")
Width	595 mm (23 27/64")
Depth	769 mm (30 9/32")
Weight (net)	61 kg (134.5 lbs) / 65.6 kg (144.6 lbs)
Drum volume	145 l (5.12 cu.ft.)
Maximum drying load	See rating plate
Speed	50–55 rpm
Rated power	See rating plate
Drum material	Stainless steel
Housing material	Hot-dip galvanized and powder coated sheet metal, or stainless steel sheet

This product contains fluorinated greenhouse gases.





Type of refrigerant	R134a
Quantity of refrigerant	0.45 kg (0.99 lbs)
Total GWP	1430
CO ₂ equivalent	0.644 t (1419.8 lbs)
Hermetically sealed.	



PROGRAM TABLE

The table indicates the power consumption and time values for drying of a test batch of laundry with various loads and after spinning at various rates, consistent with the EN61121.

The following requirements apply to the consumption values specified below.

Inlet air temperature	room temperature
Inlet air humidity	50–60%
Drying temperature	Normal

Test load		Full load  (11kg/24lbs)		Partial load  (8kg/17lbs)		Small load  (5.5kg/12lbs)	
Program	"Washing machine spin speed (rpm)"	Energy consumption approx. (kWh)	Program time approx. (h:min)	Energy consumption approx. (kWh)	Program time approx. (h:min)	Energy consumption approx. (kWh)	Program time approx. (h:min)
Auto extra dry	1400	2.20	3:50	1.57	2:55	1.09	2:15
Auto dry	1400	2.00	3:40	1.50	2:45	1.02	2:05
Auto normal dry* 	1400	1.85	3:25	1.35	2:30	1.01	2:00
Auto iron dry*	1400	1.20	2:30	0.99	1:50	0.73	1:25

	Full load
	Partial load
	Small load

* Due to deviations in terms of type and amount of laundry, spinning, power supply oscillation, and environment temperature and humidity, the values measured at the user may differ from the one stated in the table.

DISPOSAL

Disposal / recycling of packaging



Our product packaging is made of environmentally friendly materials that can be recycled, disposed of, or destroyed without any hazard to the environment. To this end, packaging materials are labelled appropriately.

The symbol on the product or its packaging indicates that the product should not be treated as normal household waste. The product should be taken to an authorized collection centre for waste electric and electronic equipment processing.

When disposing of an appliance at the end of its useful life, remove all power cords and destroy the door latch and switch to prevent the door from locking or latching (child safety).

Correct disposal of the product will help prevent any negative effects on the environment and health of people which could occur in case of incorrect product removal. For detailed information on removal and processing of the product, please contact the relevant authority in charge of waste management, your waste disposal service, or the store where you bought the product.



QUICK GUIDE



1.

SORT THE FABRICS

Sort the fabric by type and by how heavily soiled the laundry is. Observe the drying symbols on the laundry labels. Close the zippers, hook-and-loop fasteners and buttons.



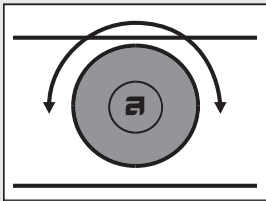
2.

SWITCH ON THE MAIN ON/OFF SWITCH (ON/OFF)



3.

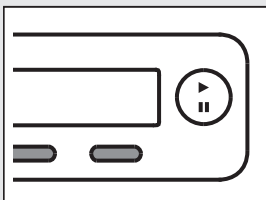
OPEN THE DRYER DOOR AND INSERT THE LAUNDRY. Before doing so, make sure the drum is empty.



4.

CHOOSE THE DRYING PROGRAM.

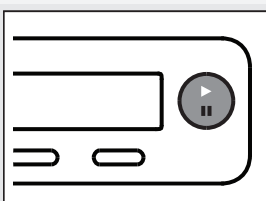
Turn the program selector knob to the desired drying program.



5.

CHOOSE THE PROGRAM SETTINGS.

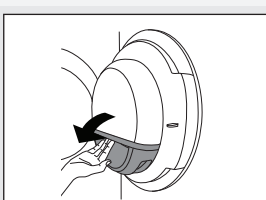
Choose the settings by pressing the relevant buttons.



6.

CLOSE THE DRYER DOOR AND PRESS THE **START/PAUSE** BUTTON.

Anticipated drying time, in hours and minutes, will be indicated on the display.



7.

END OF PROGRAM

Open the door and remove the laundry from the dryer.
Clean the filters. See chapter "CLEANING AND MAINTENANCE".
Close the door.
Switch off the main on/off switch.
Remove the plug from the power outlet.

We reserve the right to modifications.



US.ASKO.COM • CA.ASKO.COM • ASKO.COM/MX

TD85.13
SPHPGP US/CA



CE
en (12-23)