

***** READ FIRST *****

O3PURE® AIR Purifier

Pure Energy LLC
O3 PURE Division
8100A Main Street
Garrettsville, OH 44231

www.o3pure.com
www.pureenergystore.com



MODEL # PE4000STS

Congratulations on your purchase!

You have purchased a state-of-the-art SEVEN STAGE air purification system with high quality filters. Breathe easy knowing that your purifier will greatly increase the air quality of your home or office. We hope that you will enjoy your O3PURE AIR Purifier for years to come.

IMPORTANT:

- ✓ ***PURIFIER MUST BE BROUGHT TO ROOM TEMPERATURE PRIOR TO USAGE. FAILURE TO DO SO WILL DAMAGE THE INTERNAL WORKINGS OF THE UNIT. This damage will not be covered under warranty.***
- ✓ ***NEVER OPERATE YOUR PURIFIER WITH A BROKEN PLATE. DOING SO WILL CAUSE DAMAGE TO THE UNIT. This damage is not covered under warranty.***

Precautions:

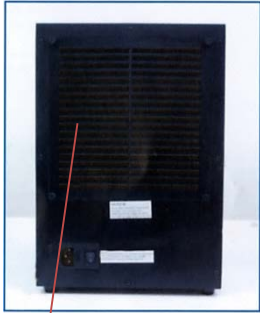
- This unit employs a ground type (3 prong) plug which will only fit into a grounding type power outlet. Do not use an adapter. Do not attempt to bypass this feature by altering the plug in any fashion.
- Do not use outdoors or on wet surfaces.
- Do not use with damaged cord or plug
- Do not unplug by pulling on the cord. Grasp the plug, not the cord.
- Do not operate this unit in areas where flammable or combustible products or vapors may be present.
- Always turn "off" and unplug the unit prior to performing maintenance.

Read all instructions carefully before using this product.

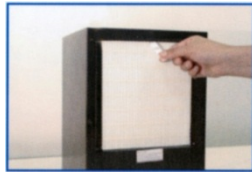
INSPECTION AND INSTALLATION

- ❑ Remove the unit from shipping carton and **SAVE** all protective packing materials.
- ❑ Remove the White Ceramic Purification plate from its package. The ceramic plate is not installed in the air purifier by the factory to prevent breakage during shipment. Verify that the White Ceramic Purification plate is intact and unbroken.
- ❑ Remove filters (4) from rear of unit:

Rear Diagram



1. The pre-filter is removed by unscrewing the 4 thumb-screws on the back of the purifier.
2. The white HEPA filter is removed by pulling on the attached ribbon-tab at the top of the filter.
3. The black Activated Carbon filter is removed by pulling on the attached ribbon-tab at the top.
4. The Photo-Catalytic Filter is removed by pulling on the attached ribbon-tab at the top.



2 Hospital-Grade HEPA Filter



3 Activated Carbon Filter



4 Photo-Catalytic Filter

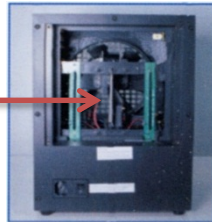


(2) Germicidal UV bulbs

1 Dirt, Dust & Debris Pre-Filter

4. Check to make sure that the UV cartridges (bulbs) are not broken.
5. Now that all of the filters are removed, install the white Ceramic Purification plate [also referred to as O₃ Activated Oxygen plate] into the purifier.
 - a) Make sure the plate is installed with the arrows pointing towards the inside of the unit.
 - b) Grasp the end of the ceramic plate and (following the photographs below) and slide the plate vertically into card slot.

Activated Oxygen
O₃ Plate



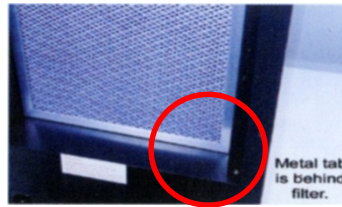
6. Reinstall the 3 inner filters in the following order:

FIRST, with the ribbon to the outside, place the Photo-Catalytic Filter in the unit so that the safety tab can no longer be seen. **CAUTION: When properly installed, the Photo-Catalytic Filter will push the safety tab towards the center of the unit and will no longer be visible. See photos BELOW for proper installation.**

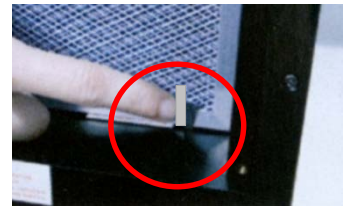
*****THE PURIFIER WILL NOT TURN-ON IF THIS FILTER IS NOT INSTALLED PROPERLY.**



TAB LOCATION



CORRECT INSTALL



INCORRECT INSTALL

SECOND, insert the black Activated Carbon filter. Make sure the ribbon-tab is on the outside

THIRD, insert the HEPA filter in next. Make sure the ribbon-tab is on the outside.

LASTLY, replace the Pre-Filter and install the 4 thumb screws to secure.

7. Determine a location for your unit(s). Allow a minimum of six inches between the back of the unit and the wall to allow proper air flow. Elevated placement is preferred as activated oxygen (O₃) is heavier than air. Increasing the elevation increases the performance of the purifier.
8. Plug unit into an appropriate (three prong grounded) outlet. Be sure the power switch on the rear of unit is in the "ON" position.

GENERAL MAINTENANCE

Periodic maintenance of your air purifier is important. A good rule of thumb is to give your unit a "once-over" every 30 to 40 days to ensure continued optimal performance.

IMPORTANT: Disconnect power cord from both unit and wall prior to performing any maintenance function

Cleaning the Pre-Filter, HEPA Filter, Carbon and Photo-Catalytic Filter

If Dirt is visible, take out the filters and remove particulate by:

WIPING the **carbon and photo-catalytic filters** with a clean cloth or vacuum with brush attachment.

RINSING the **Pre-filter and HEPA filters** using hot water every 3 to 6 months, depending on usage, and allow to air dry.

Filters MUST BE thoroughly dry before re-installing.

WARNINGS:

DO NOT USE soap or detergent as it will damage the material in the filters.

DO NOT USE a hairdryer to accelerate the drying time!

Cleaning the activated Oxygen O³ Plate



Remove the Pre-Filter, the HEPA filter, the Activated Carbon and Photo-Catalytic filters. Carefully remove the white purification plate by grasping the end and carefully pulling straight out of the card slot. Clean the plate

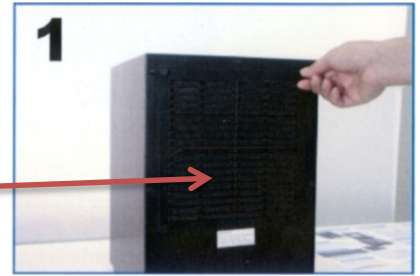
with a soft/medium brush using a 50/50 solution of ammonia and hot water. Rinse plate in warm water and dry thoroughly before re-installing. **The plate MUST BE thoroughly dry before re-installing.**

Cleaning the Front Grill and Fan Blades

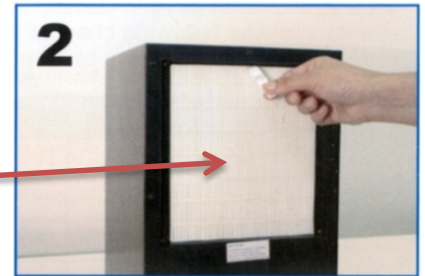


Note: It is normal for the ANION to cause some particles to accumulate on the front grill and fan blades. Use a Phillips-head screw driver to remove the (4) screws in the front grill cover. Simply clean the blades and grill with a damp cloth or vacuum. Allow to dry completely before re-attaching the front grill cover.

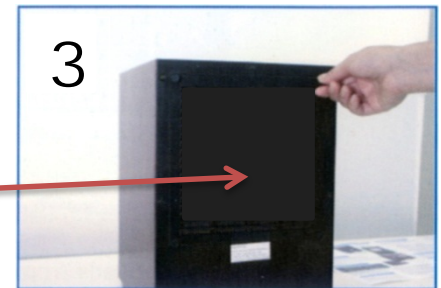
Filters are removed in this order



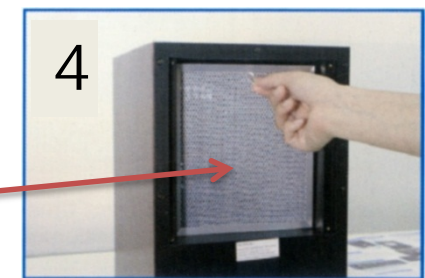
WASHABLE
Dirt, Dust &
Debris Pre-Filter



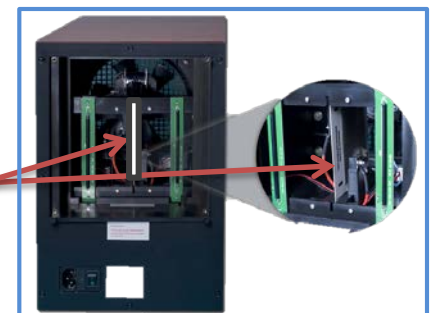
CLEANABLE
Hospital-Grade
HEPA Filter



CLEANABLE
Activated
Carbon Filter



CLEANABLE
Photo-Catalytic
Filter



Activated Oxygen
(PURIFY) O³ Plate

USING THE PURIFY FUNCTION

The purify setting is a powerful part of your purifier. It engages the ozone (O³) generator in the unit. This is a great solution for mold and strong odors. The PURIFY (O₃) is not designed to be left on all the time, but rather to be used for short periods or with the timer, to cleanse unoccupied areas. When used for mold eradication in musty moldy basements, set the timer on the unit so that it runs for 1 or 2 hours on highest fan and purify settings, then leave the area or shut the area off by closing the door. Set the unit to shut down at least 30 minutes prior to your return. These 30 minutes allow ozone (O³) to turn into oxygen (O²) rich air. See instructions below when used to overcome odors. As a good rule of thumb, when you no longer smell the odor and instead smell the ozone (O³), the ozone has done its job and you may turn the ozone off and return the unit to normal settings.

Press “Purify ▲” or “Purify ▼” to adjust the level of activated oxygen (O³). There are five stages. Use the following chart to determine the proper setting for the area to be purified. Reference the chart below for recommended purify levels. These levels are considered safe for short periods of time when the room is occupied. **HOWEVER, INDIVIDUALS WITH ASTHMA OR ANY RESPIRATORY OR LUNG CONDITION SHOULD NOT BE IN THE ROOM WHEN THE PURIFY FEATURE IS ENGAGED.**

Level 0	No Ozone	
Level 1	Up to 500	Square Feet
Level 2	500 - 1000	Square Feet
Level 3	1000 - 1500	Square Feet
Level 4	1500 - 2000	Square Feet
Level 5	2000 - 4000	Square Feet

IS OZONE SAFE ?

Yes, but moderation is the key. Use your nose – if you can smell ozone, it is time to turn it off.

The following guidelines should be strictly adhered to:

- Set the Purify (O₃) Level properly for the room size.
- Run the Purify (O₃) feature for short periods of time. Do not continuously run the Purify feature.
- Individuals with asthma or any respiratory or lung condition should not be in the room when using the Purify feature.
- Only set the Purify Level on higher settings when the room is unoccupied (people and animals) to eradicate odors [cigarette, pet, cooking odors, etc.]
- Use the (O₃) Timer to run the ozone safely on higher settings in unoccupied setting and allow the unit to shut down this PURIFY feature automatically.
- When someone in the room is using bottled Oxygen, you should not use the purify (O₃) feature.

Ozone in very high concentrations can be irritating to mucous membranes and the respiratory system. Relatively low levels of ozone may cause chest pain and shortness of breath. Ozone may worsen asthma and compromise the ability of the body to fight respiratory infections.

**Please refer to User’s Guide for additional instructions on the Purify Function, as well
Operating Settings, Setting the Clock, etc.**