

# Diffuse mode sensor

## RLK39-8-800-Z/31/40a/116

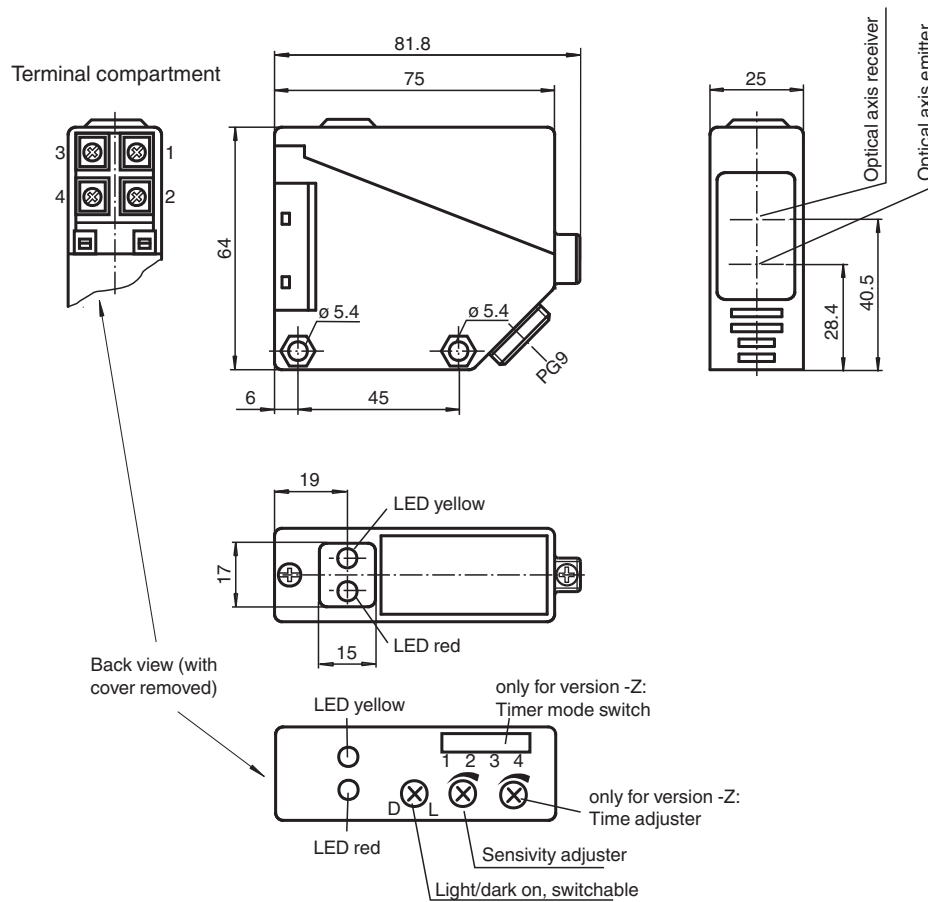


- Infrared light
- Light-on/dark-on, switchable
- Timer function
- Degree of protection IP67

Diffuse mode sensor



### Dimensions



Release date: 2023-03-28 Date of issue: 2023-03-28 Filename: 088834\_eng.pdf

Refer to "General Notes Relating to Pepperl+Fuchs Product Information".

Pepperl+Fuchs Group  
www.pepperl-fuchs.com

USA: +1 330 486 0001  
fa-info@us.pepperl-fuchs.com

Germany: +49 621 776 1111  
fa-info@de.pepperl-fuchs.com

Singapore: +65 6779 9091  
fa-info@sg.pepperl-fuchs.com

**PF** PEPPERL+FUCHS

## Technical Data

General specifications		
Detection range		0 ... 800 mm
Adjustment range		150 ... 800 mm
Reference target		standard white 200 mm x 200 mm
Light source		IREd
Light type		modulated infrared light
Ambient light limit		IEC / EN 60947-5-2 , 10000 Lux
Functional safety related parameters		
MTTF <sub>d</sub>		803 a
Mission Time (T <sub>M</sub> )		20 a
Diagnostic Coverage (DC)		0 %
Indicators/operating means		
Function indicator		LED yellow: switching state LED red: pre-fault indication
Control elements		Sensing range adjuster, light-on/dark-on changeover switch
Control elements		switch for timer function
Electrical specifications		
Operating voltage	U <sub>B</sub>	12 ... 240 V DC 24 ... 240 V AC (50 ... 60 Hz)
Ripple		10 %
No-load supply current	I <sub>0</sub>	≤ 50 mA
Protection class		II, rated voltage ≤ 250 V AC with pollution degree 1-2 according to IEC 60664-1 Caution! The protection class 2 is only valid when the terminal compartment is closed. output circuit has basic insulation to control circuit according to IEC/EN 61140
Power consumption	P <sub>0</sub>	≤ 3 VA
Time delay before availability	t <sub>v</sub>	≤ 300 ms
Output		
Switching type		light/dark on
Signal output		1 relay output
Switching voltage		max. 240 V AC ; 150 V DC
Switching current		max. 3 A
Switching power		DC: max. 90 W AC: max. 750 VA
Switching frequency	f	≤ 25 Hz
Response time		≤ 20 ms
Timer function		On-/off-delay or pulse extension on choice
Conformity		
Product standard		EN 60947-5-2
Approvals and certificates		
CCC approval		Certified by China Compulsory Certification (CCC)
Approvals		CE
Ambient conditions		
Ambient temperature		-25 ... 55 °C (-13 ... 131 °F)
Storage temperature		-40 ... 70 °C (-40 ... 158 °F)
Mechanical specifications		
Housing width		25 mm
Housing height		64 mm
Housing depth		75 mm
Degree of protection		IP67
Connection		terminal compartment PG9, ≤ 2.5 mm <sup>2</sup>
Material		
Housing		PBT
Optical face		PMMA
Mass		approx. 110 g
General information		

Release date: 2023-03-28 Date of issue: 2023-03-28 Filename: 088834\_eng.pdf

Refer to "General Notes Relating to Pepperl+Fuchs Product Information".

 Pepperl+Fuchs Group  
www.pepperl-fuchs.com

 USA: +1 330 486 0001  
fa-info@us.pepperl-fuchs.com

 Germany: +49 621 776 1111  
fa-info@de.pepperl-fuchs.com

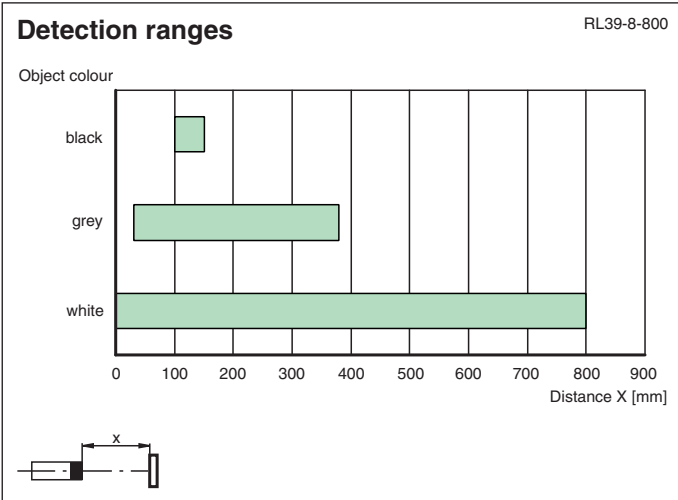
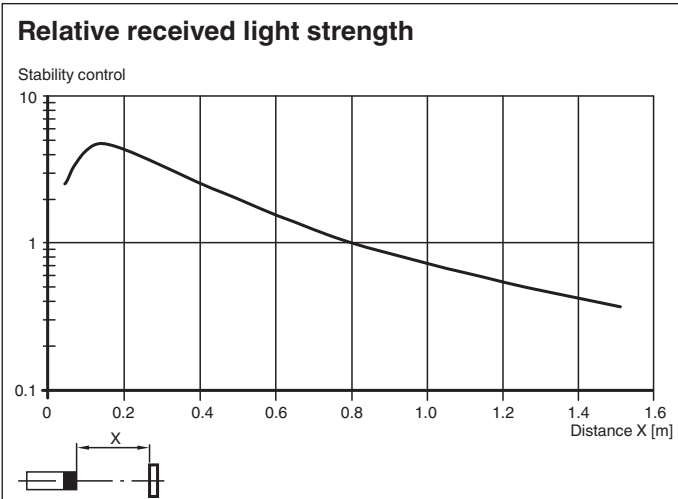
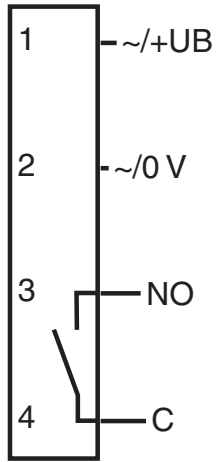
 Singapore: +65 6779 9091  
fa-info@sg.pepperl-fuchs.com

 PEPPERL+FUCHS

**Technical Data**

Scope of delivery	Mounting aid
-------------------	--------------

**Connection Assignment**



Release date: 2023-03-28 Date of issue: 2023-03-28 Filename: 088834\_eng.pdf

# Mounting

**Timerfunktion**  
**Fonction de temporisation**  
**Funzione timer**

**Timer function**  
**Función del timer**

Zeitgeber Modus  
Timer Mode  
Mode temporisation  
Modo Temporizador  
Modo di controllo di tono

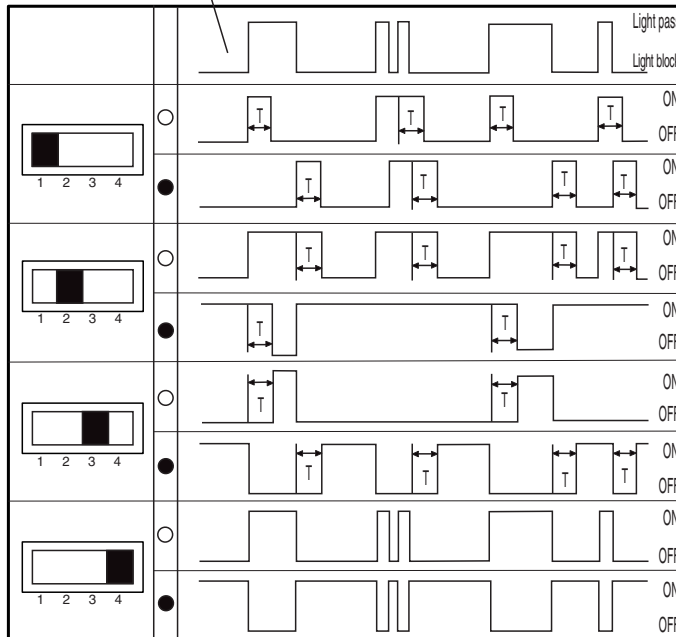
Lichtstrahl, light beam, faisceau lumineux,  
barrera de luz, raggio di luce

Impulsausgang  
One shot  
Sortie impulsions  
Salida de impulso  
Uscita d'impulsi

Aus-Verzögerung  
Off-delay  
Retard OFF  
Retardo a la desconexión  
Ritardo di spegnimento


Ein-Verzögerung  
On-delay  
Retard ON  
Retardo a la conexión  
Ritardo di accensione

Normal  
Normal  
Normal  
Normale



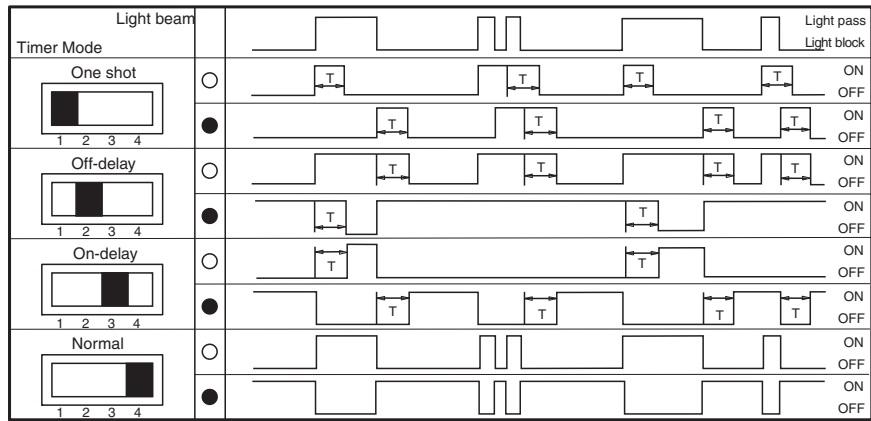
- Kennzeichnung der Hell-Schaltung (T= 0,1 s bis 10 s).  
Denotes Light-ON (T= 0.1 s ... 10 s).  
Sensibilité à la lumière (T= 0,1 s ... 10 s).  
Indicación conmut. claro (T= 0,1 s ... 10 s).  
Commutazione in presenza di luce (T= 0,1 s ... 10 s).
- Kennzeichnung der Dunkel-Schaltung  
Denotes Dark-ON  
Sensibilité à l'obscurité  
Indicación conmut. oscuro  
Commutazione per assenza di luce

# Accessories

	<b>OMH-RL39</b>	Mounting bracket for RL39 series Sensors
---	-----------------	--

Release date: 2023-03-28 Date of issue: 2023-03-28 Filename: 088834\_eng.pdf

**Configuration**



○ Denotes Light - ON T= 0.1 .... 10 sec.  
 ● Denotes Dark - ON

Release date: 2023-03-28 Date of issue: 2023-03-28 Filename: 088834\_eng.pdf