

Diffuse mode sensor

RLK39-8-2000-Z/31/40a/116

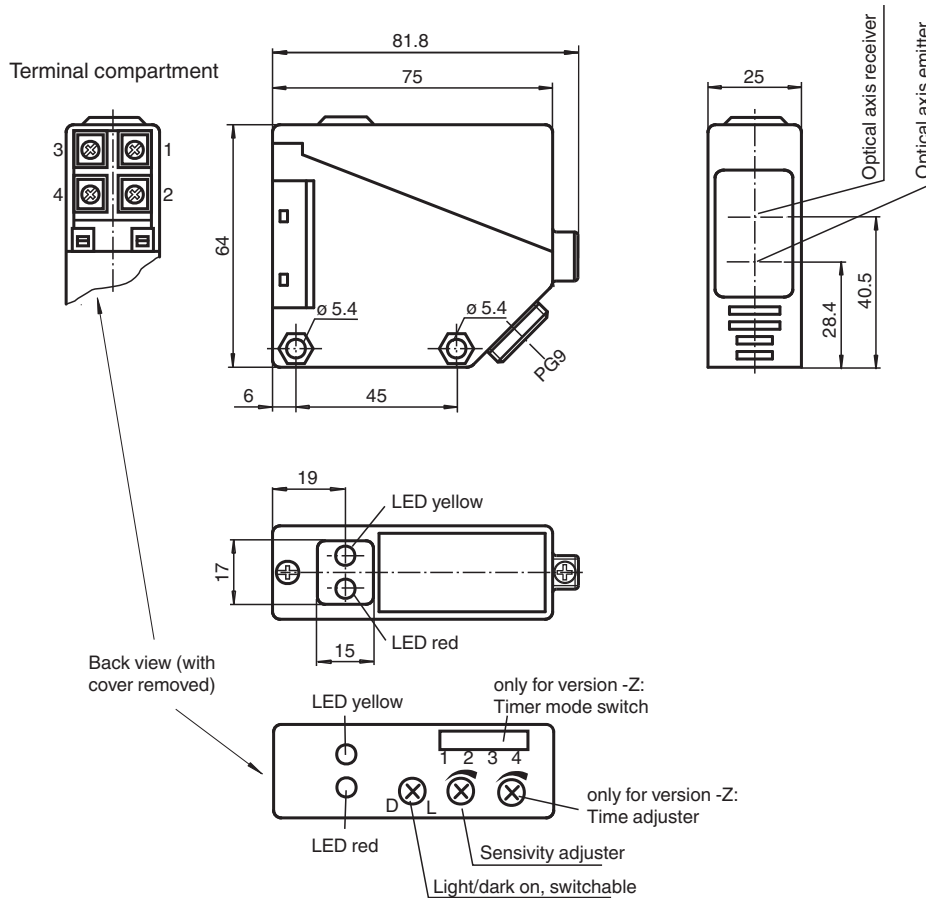


- Infrared light
- Light-on/dark-on, switchable
- Timer function
- Degree of protection IP67

Diffuse mode sensor



Dimensions



Release date: 2020-12-10 Date of issue: 2020-12-10 Filename: 088828_eng.pdf

Refer to "General Notes Relating to Pepperl+Fuchs Product Information".

Pepperl+Fuchs Group
www.pepperl-fuchs.com

USA: +1 330 486 0001
fa-info@us.pepperl-fuchs.com

Germany: +49 621 776 1111
fa-info@de.pepperl-fuchs.com

Singapore: +65 6779 9091
fa-info@sg.pepperl-fuchs.com

PF PEPPERL+FUCHS

Technical Data

| General specifications | | |
|--------------------------------------|----------------|---|
| Detection range | | 0 ... 2000 mm |
| Adjustment range | | 200 ... 2000 mm |
| Reference target | | standard white 200 mm x 200 mm |
| Light source | | IREC |
| Light type | | modulated infrared light |
| Ambient light limit | | IEC / EN 60947-5-2 , 10000 Lux |
| Functional safety related parameters | | |
| MTTF _d | | 803 a |
| Mission Time (T _M) | | 20 a |
| Diagnostic Coverage (DC) | | 0 % |
| Indicators/operating means | | |
| Function indicator | | LED yellow: switching state LED red: pre-fault indication |
| Control elements | | Sensing range adjuster, light-on/dark-on changeover switch |
| Control elements | | switch for timer function |
| Electrical specifications | | |
| Operating voltage | U _B | 12 ... 240 V DC 24 ... 240 V AC (50 ... 60 Hz) |
| Ripple | | 10 % |
| No-load supply current | I ₀ | ≤ 50 mA |
| Protection class | | II, rated voltage ≤ 250 V AC with pollution degree 1-2 according to IEC 60664-1 Caution! The protection class 2 is only valid when the terminal compartment is closed. output circuit has basic insulation to control circuit according to IEC/EN 61140 |
| Power consumption | P ₀ | ≤ 3 VA |
| Time delay before availability | t _v | ≤ 300 ms |
| Output | | |
| Switching type | | light/dark on |
| Signal output | | 1 relay output |
| Switching voltage | | max. 240 V AC ; 150 V DC |
| Switching current | | max. 3 A |
| Switching power | | DC: max. 90 W AC: max. 750 VA |
| Switching frequency | f | ≤ 25 Hz |
| Response time | | ≤ 20 ms |
| Timer function | | On-/off-delay or pulse extension on choice |
| Conformity | | |
| Product standard | | EN 60947-5-2 |
| Approvals and certificates | | |
| EAC conformity | | TR CU 020/2011 TR CU 004/2011 |
| CCC approval | | Certified by China Compulsory Certification (CCC) |
| Approvals | | CE |
| Ambient conditions | | |
| Ambient temperature | | -25 ... 55 °C (-13 ... 131 °F) |
| Storage temperature | | -40 ... 70 °C (-40 ... 158 °F) |
| Mechanical specifications | | |
| Housing width | | 25 mm |
| Housing height | | 64 mm |
| Housing depth | | 75 mm |
| Degree of protection | | IP67 |
| Connection | | terminal compartment PG9, ≤ 2.5 mm ² |
| Material | | |
| Housing | | PBT |
| Optical face | | PMMA |

Release date: 2020-12-10 Date of issue: 2020-12-10 Filename: 088828_eng.pdf

Refer to "General Notes Relating to Pepperl+Fuchs Product Information".

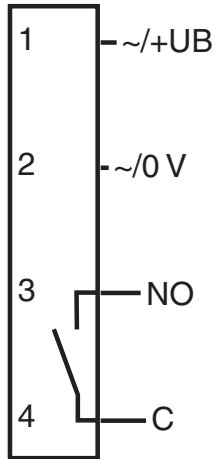
Pepperl+Fuchs Group
www.pepperl-fuchs.comUSA: +1 330 486 0001
fa-info@us.pepperl-fuchs.comGermany: +49 621 776 1111
fa-info@de.pepperl-fuchs.comSingapore: +65 6779 9091
fa-info@sg.pepperl-fuchs.com

PEPPERL+FUCHS

Technical Data

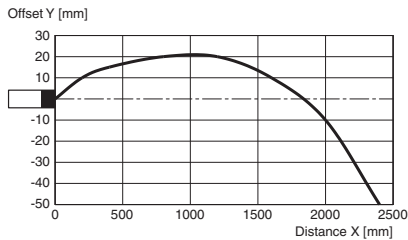
| | |
|----------------------------|---------------|
| Mass | approx. 110 g |
| General information | |
| Scope of delivery | Mounting aid |

Connection Assignment

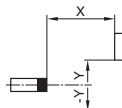


Characteristic Curve

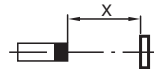
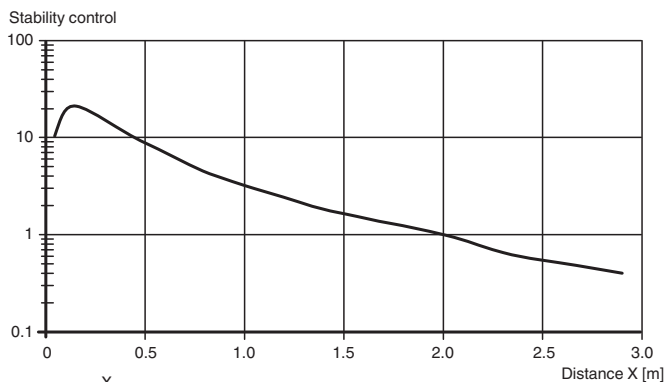
Characteristic response curve



Permissible distance (offset) between optical axis and object.



Relative received light strength

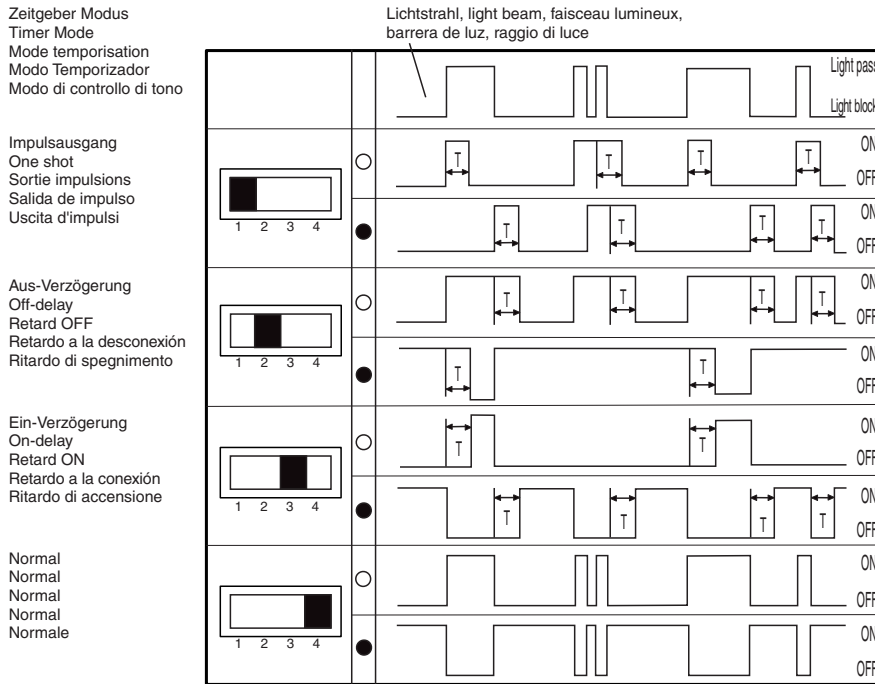


Release date: 2020-12-10 Date of issue: 2020-12-10 Filename: 088828_eng.pdf


Mounting

Timerfunktion Fonction de temporisation Funzione timer

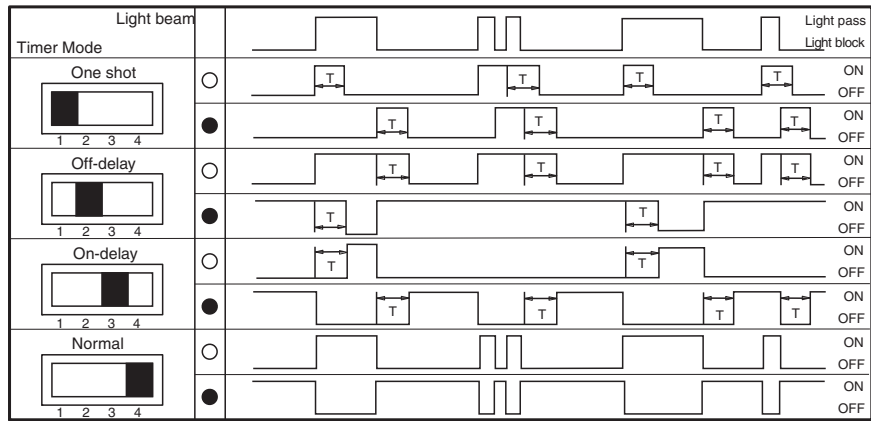
Timer function Función del timer



Accessories

| | | |
|---|-----------------|--|
|  | OMH-RL39 | Mounting bracket for RL39 series Sensors |
|---|-----------------|--|

Configuration



○ Denotes Light - ON T= 0.1 10 sec.
 ● Denotes Dark - ON

Release date: 2020-12-10 Date of issue: 2020-12-10 Filename: 088828_eng.pdf