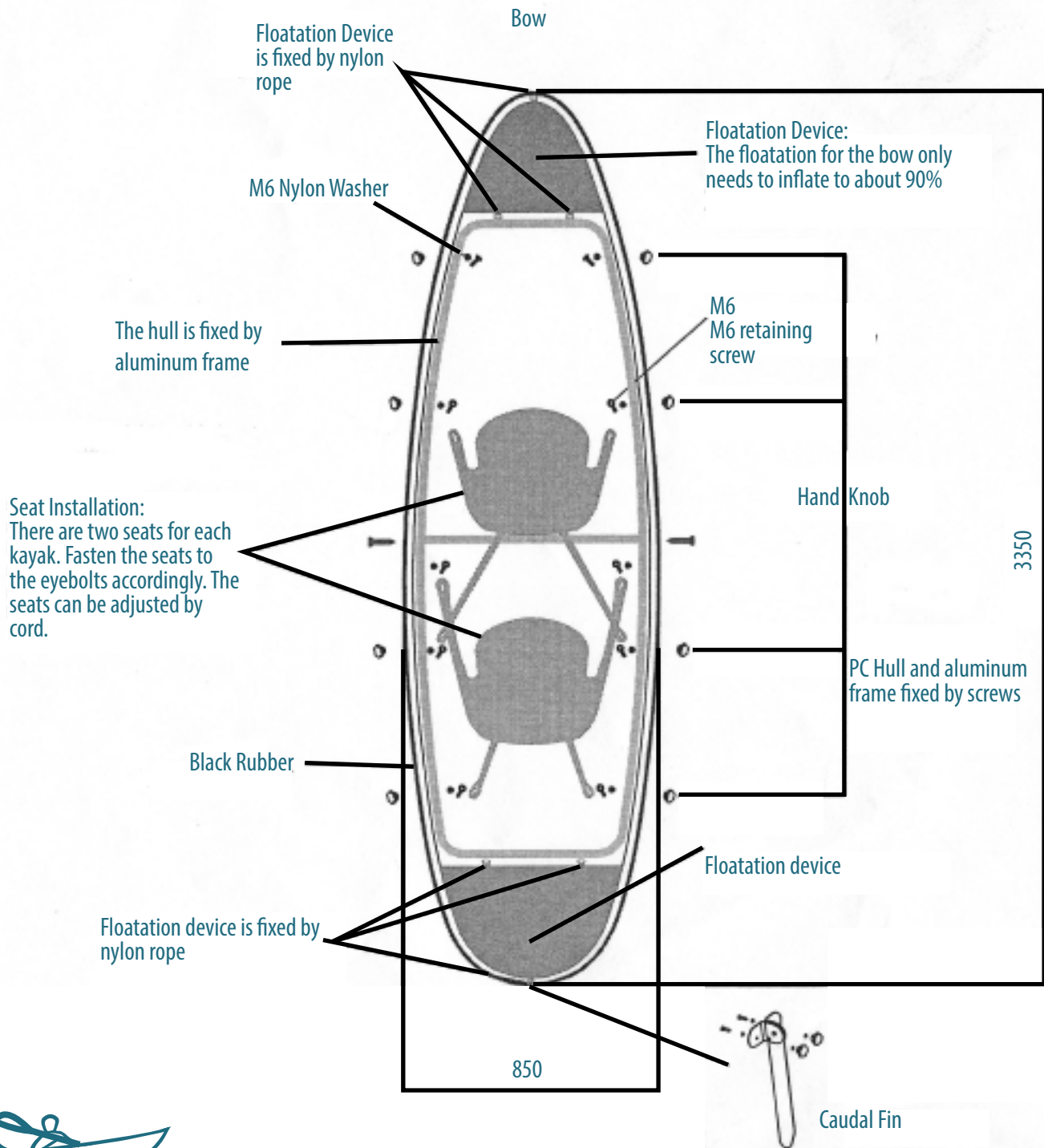




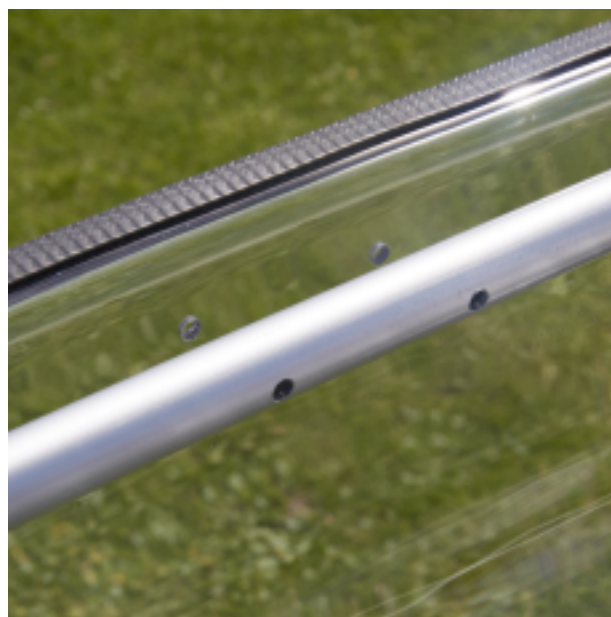
# Assembly Instructions

# Parts

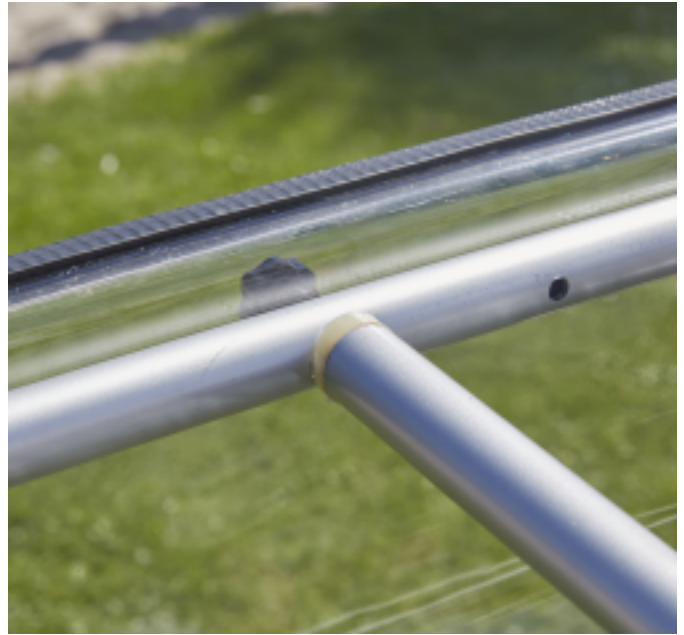


Check to make sure the serial number on your frame matches the serial number on the kayak.

Insert the frame inside the hull and line up with the holes.

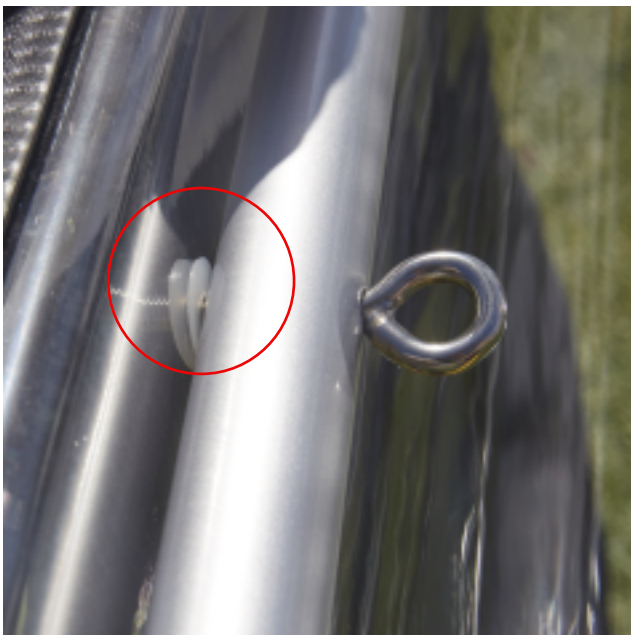


Fasten the middle crossbar to the hull first.



Fasten the rest of the frame to the hull using the washers, handknobs and metal retaining screws.

Make sure the nylon washers are on each side of the hull (shown in picture below)



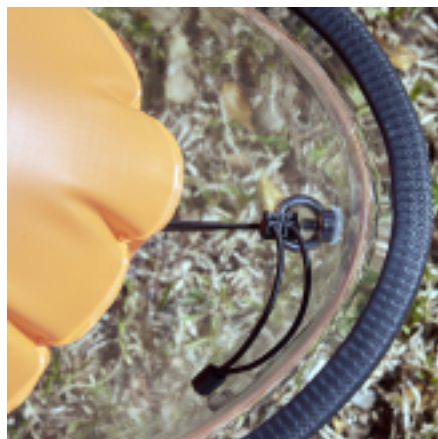


Attach the seat hooks into the eyelets that were previously attached to the hull. For the correct seat placement, check the diagram from the first page. Tighten seats to desired fit.



Inflate the floatation devices.

Secure them to the hull of the boat with the elastics provided



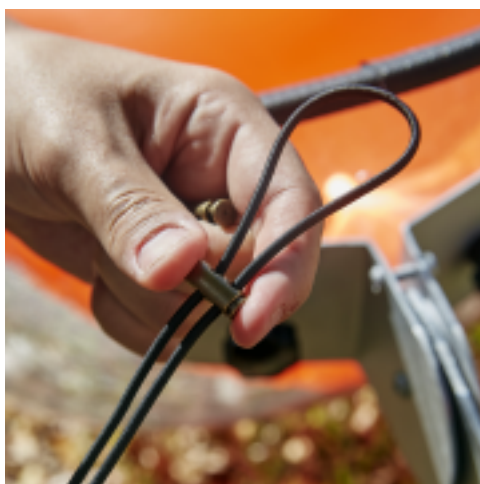


Align the caudal fin with the holes on the stern of the kayak.

Attach the caudal fins with the bolt. Tighten with an allen key

Use the remaining elastic to secure the caudal fin.

Loop around the hand knobs and secure with the bronze attachments



To assemble the oar connect 3 metal pieces with the 2 plastic connectors.

There will be one extra metal piece.

Attach the paddles.



Your Kayak is now assembled!

