



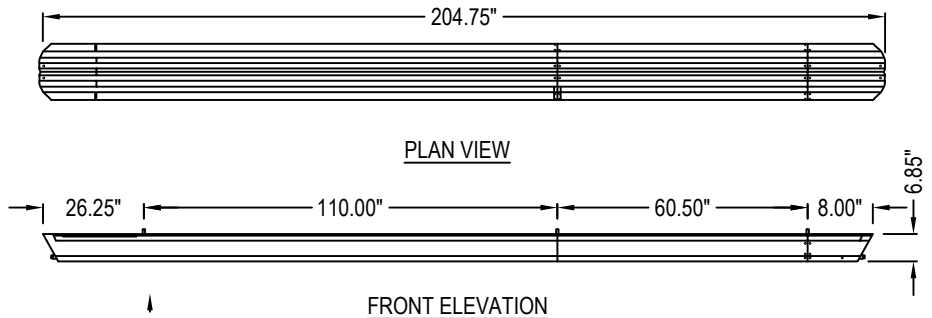
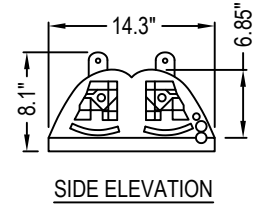
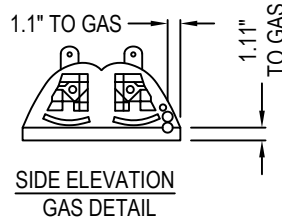
IR ENERGY INC.
 563 BARTON STREET
 STONEY CREEK, ON L8E 5S1
 PHONE: (905) 664-9082
 www.irenergy.ca

SELECT DESIRED GAS:

- NATURAL GAS
- PROPANE

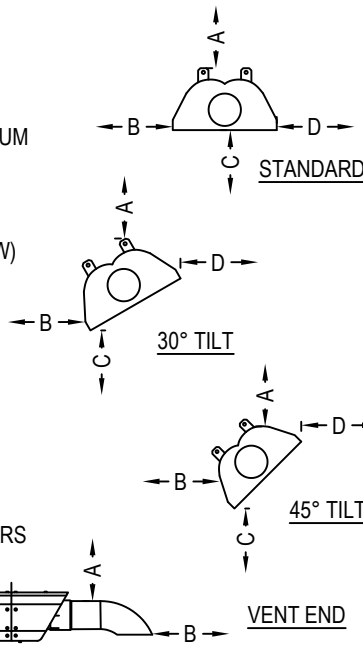
SELECT DESIRED FINISH:

- MARINE GRADE ALUMINUM REFLECTORS, BURNER END CAP, SERVICE COVER AND EXHAUST END CAP
- BLACK CANOPY REFLECTORS. BLACK, BURNER END CAP, SERVICE COVER AND EXHAUST END CAP



TECHNICAL SPECIFICATIONS:

- **BURNER HEAD CONSTRUCTION:**
COMBINATION OF MARINE GRADE ALUMINUM AND 316 STAINLESS STEEL
- **GAS SUPPLY PRESSURE:**
NG INLET: 14" W.C (MAX), 5" W.C (MIN)
NG MANIFOLD: 3.3" W.C. (HI), 1.5" W.C. (LOW)
INLET CONNECTION: 1/2" FEMALE NPT
- **ELECTRIC SUPPLY:**
120 VAC, 60 HZ, 1 AMP: 36" CORD WITH GROUNDED 3 PRONG PLUG
- **CONTROL (OPTIONAL):**
TWO-STAGE CONTROL SWITCH 24V



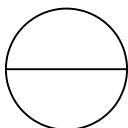
CLEARANCE TO COMBUSTIBLES		
REFLECTOR CONFIGURATION	DIMENSION	MODEL NO.
		ETSV60 - 17' 37,500/60,000 BTU/HR
STANDARD	A	3"
	B	22"
	C	59"
	D	22"
30° TILT	A	4"
	B	5"
	C	53"
	D	34"
45° TILT	A	5"
	B	4"
	C	52"
	D	40"
VENT END	A	6"
	B	26"
	END	18"

WARRANTY:

- BURNER AND CONTROLS: 3 YEARS
- HEAT TREATED ALUMINIZED TUBE: 10 YEARS

NOTES:

1. INSTALLATION TO BE COMPLETED IN ACCORDANCE WITH MANUFACTURER'S SPECIFICATIONS.
2. DO NOT SCALE DRAWING.
3. THIS DRAWING IS INTENDED FOR USE BY ARCHITECTS, ENGINEERS, CONTRACTORS, CONSULTANTS AND DESIGN PROFESSIONALS FOR PLANNING PURPOSES ONLY.
4. ALL INFORMATION CONTAINED HEREIN WAS CURRENT AT THE TIME OF DEVELOPMENT BUT MUST BE REVIEWED AND APPROVED BY THE PRODUCT MANUFACTURER TO BE CONSIDERED ACCURATE.
5. CONTRACTOR'S NOTE: FOR PRODUCT AND COMPANY INFORMATION VISIT www.CADdetails.com/info AND ENTER REFERENCE NUMBER 5029-028.



EVENTUBE

EVENTUBE INDOOR OUTDOOR SLIM LINE: MODEL ETSV60 - 37,500 BTU/HR (LO), 60,000 BTU/HR (HI) FOR BOTH NG AND LP