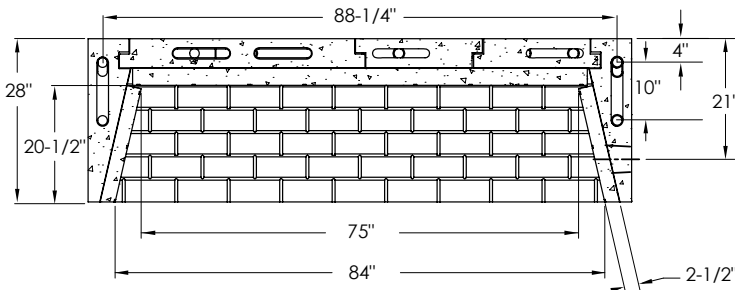
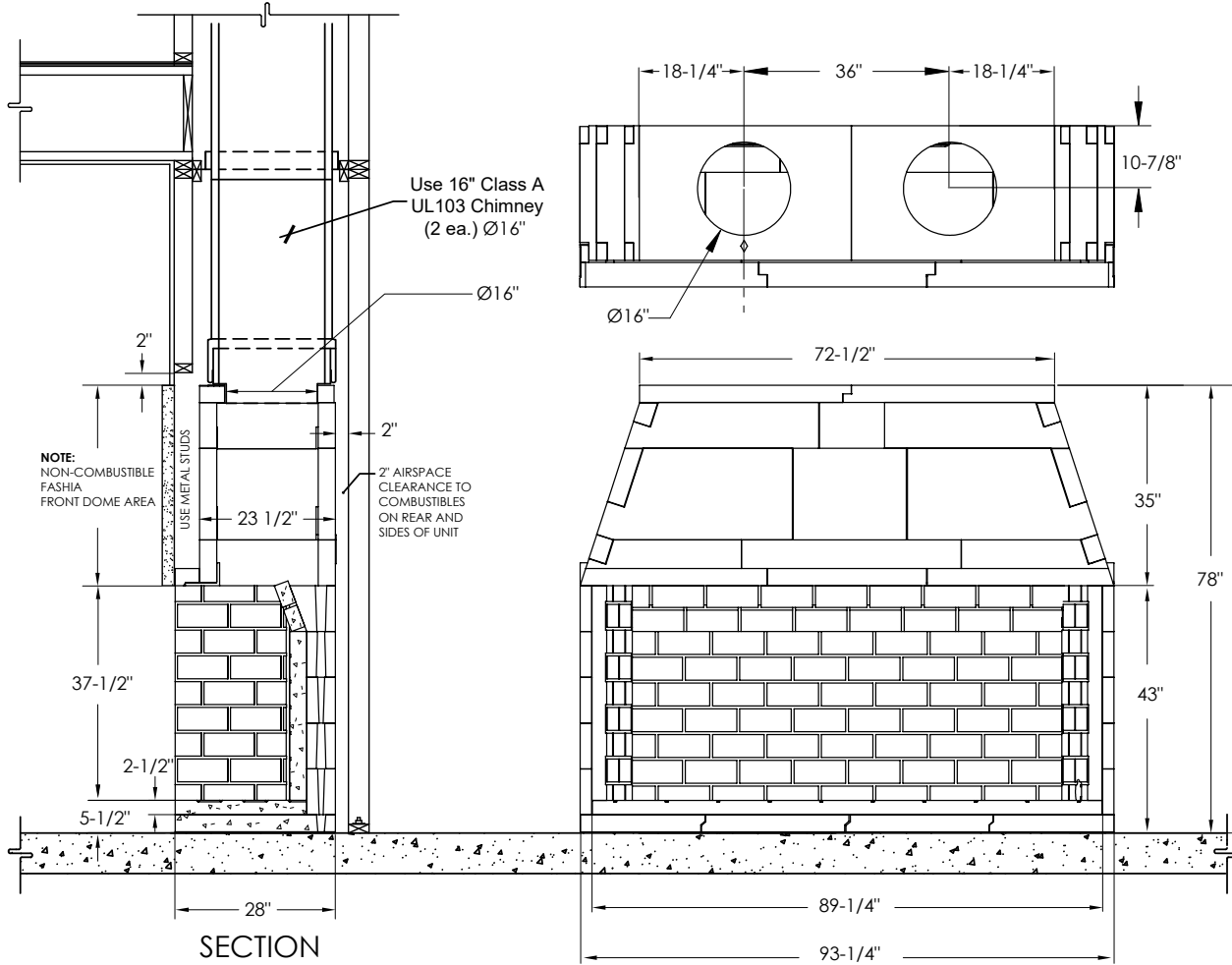


# MASON-LITE

by MFI • Masonry Fireplace Industries, Inc.



| OTHER DIMENSIONS              |           |
|-------------------------------|-----------|
| Framing Width                 | 97-1/4"   |
| Framing Height                | 80-1/4"   |
| Framing Depth                 | 30"       |
| Floor Area (93.25 x 28)       | 18.13 sf  |
| Fireplace Weight              | 3482 lbs. |
| Mortar and Rebar              | 130 lbs   |
| Ready Mix                     | 540 lbs.  |
| Flue Size - Class A           | Dual Ø16" |
| Metal Chimney Weight per foot | 12 lbs.   |

| ACCESSORIES            |           |         |
|------------------------|-----------|---------|
| Anchor Plate/Damper    | 16DCA-APD | 26 lbs. |
| Ø4" Combustion Air Kit | MFP4-AK-M | 6 lbs.  |

| OTHER INFORMATION  |
|--|
| Firebox must be lined with firebrick (ASTM-C1261) 9 x 4 x 2.5 (Qty. 185 ea.) |

ALL DIMENSIONS ARE IN INCHES.

\* ALL VERTICAL DIMENSIONS SHOWN ARE DRY STACK MINIMUM, HIGH TEMPERATURE MORTAR THICKNESS WILL INCREASE THESE DIMENSIONS WHICH MAY ADD UP TO 1 INCH (NOMINAL) TO THE OVERALL HEIGHT.

**Important:** 2 inch minimum clearance to combustibles from the Dome Top must be maintained.

**Note:** If your installation is on combustible floor, the total fireplace height will increase due to the addition of the required CMU blocks, cement board & insulation blanket.

## MODEL: MFP84-RGL

| DWG. NUMBER | RELEASE DATE | REV. DATE  |
|-------------|--------------|------------|
| S-RGL002    | 06/20/2023   | 06/20/2023 |