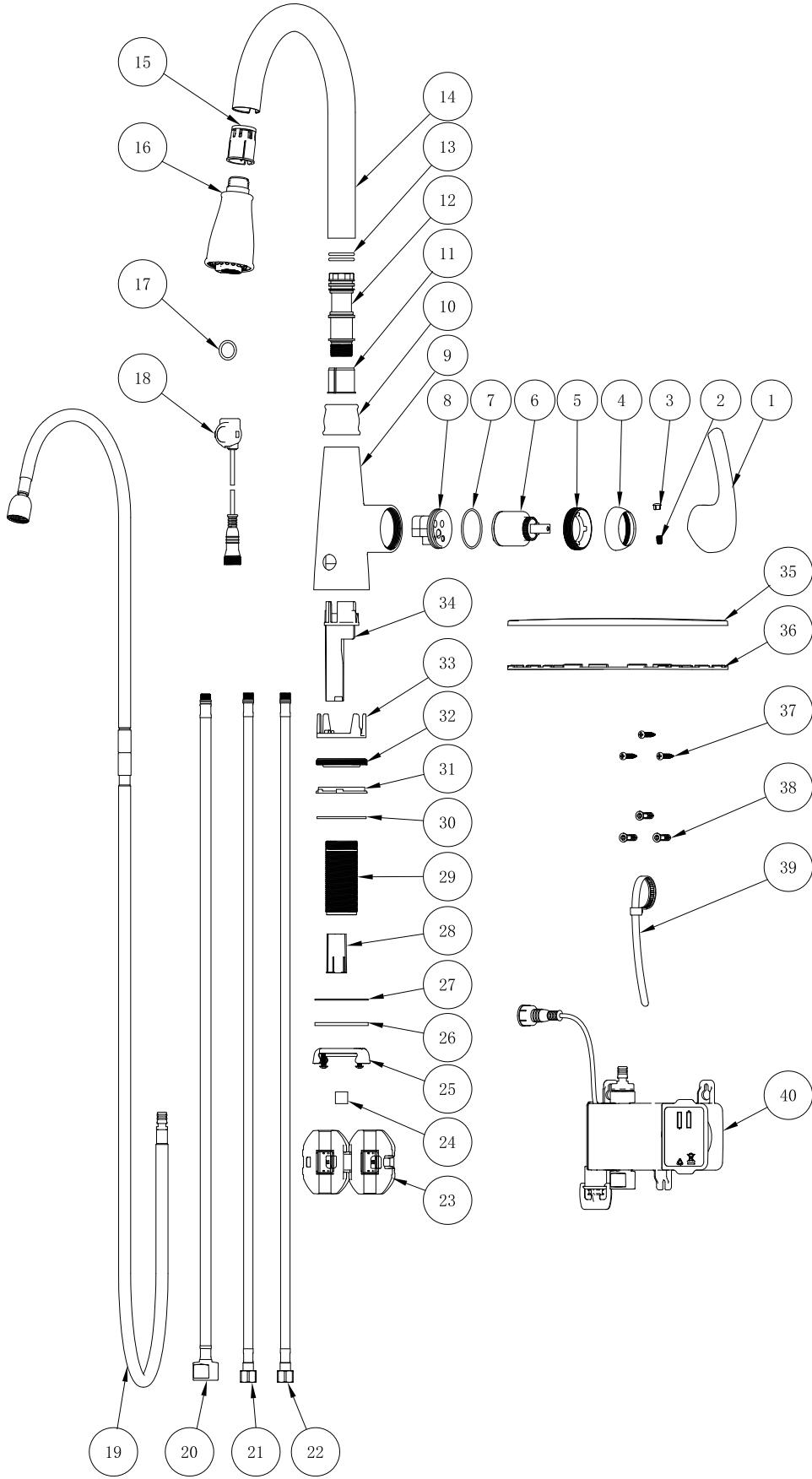
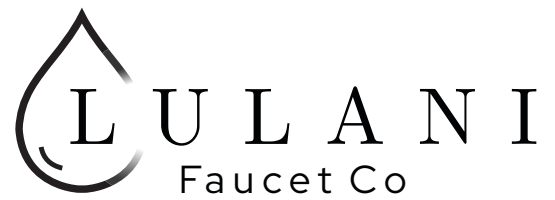


Parts Breakdown

KA-900-30

Single Handle Dual Sensor Kitchen Faucet



No.	Description	Qty
1	Handle	1
2	Hexagonal screw	1
3	Indicator button	1
4	Bonnet	1
5	Cartridge nut	1
6	Cartridge	1
7	O-ring	1
8	Cartridge seat	1
9	Body	1
10	Cover	1
11	Rotating sleeve	1
12	Spout connector	1
13	O-ring	2
14	Spout	1
15	Sleeve	1
16	Spray head	1
17	O-ring	1
18	Sensor	1
19	Spray hose	1
20	Outlet hose	1
21	Cold inlet hose	1
22	Hot inlet hose	1
23	Counterweight	1
24	Claw	1
25	Mounting nut	1
26	Metal gasket	1
27	Rubber gasket	1
28	Guide sleeve	1
29	Shank	1
30	Rubber washer	1
31	Inner base	1
32	Connector	1
33	Fixed part	1
34	Guide sleeve	1
35	Cover part	1
36	Plate gasket	1
37	Screw set	3
38	Screw set	3
39	Tip tie (not included)	1
40	Control box	1