

# DuraVent® MODEL BV

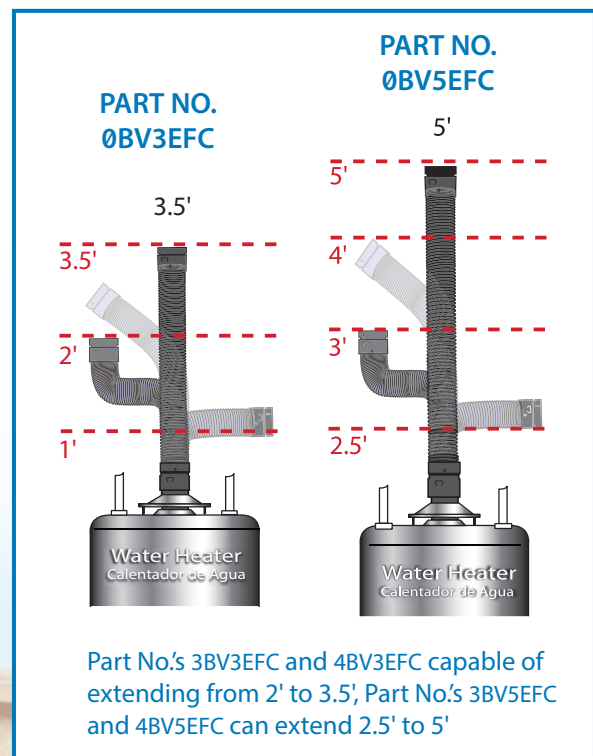


## DURACONNECT I - SINGLE WALL EXPANDABLE FLEXIBLE CONNECTOR

The DuraVent® DuraConnect I Expandable Flexible Gas Vent Connector is designed to simplify connections between gas-fired appliances and rigid Type B Gas Vent

### Feature

- Eliminates the guesswork for a simple & quick installation
- Expands 2' to 3.5' or 2.5' to 5'
- Integrated Draft Hood Connector
- Limited Lifetime Warranty
- 360° Flexibility



**Contact Us!**  
www.duravent.com  
1.800.835.4429

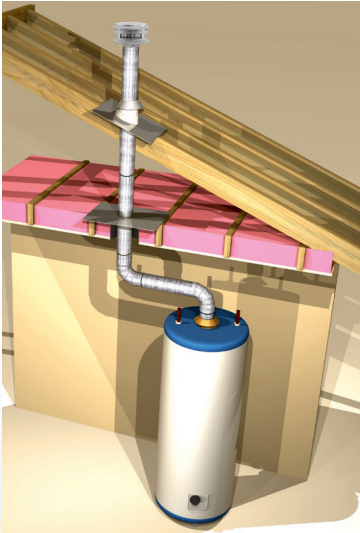
Visit our website! [www.duravent.com](http://www.duravent.com)  
links to catalogs, submittal, performance data, sizing guides,  
calculators, brand merchandise, testimonials, and more!



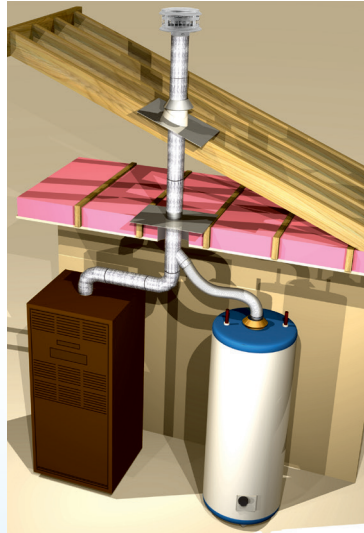
# DURACONNECT I EXPANDABLE FLEXIBLE GAS VENT CONNECTOR

**EXPANDS**  
**2' to 3.5' or**  
**2.5' to 5'**

We make connecting to Type B Gas Vent... Simple.



Single Vent



Combined Vent

The DuraVent® DuraConnect I Expandable Flexible Gas Vent Connector is designed for use with gas-fired appliances equipped with draft hoods and other appliances listed for use with Type B Gas Vent.

This Expandable Flexible Gas Vent Connector system eliminates the need for elbows and greatly simplifies most gas appliance vent installations.

The DuraConnect I is available in 3" & 4" diameters and can expand from two feet (2') to three and a half feet (3.5') or from two and a half feet (2.5') to five feet (5').



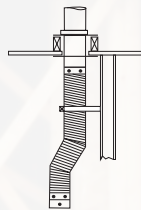
Center section allows for 360° flexibility & allows total length of DuraConnect I to expand from 2'-3.5' or 2.5'-5'

Built-in Draft Hood Connector

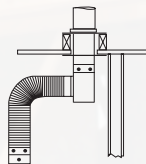
Size	Order #	Stock	Description
3"	3BV3EFC	810017759	3" (2'-3.5') Flex Connector
3"	3BV5EFC	810017760	3" (2.5'-5') Flex Connector
4"	4BV3EFC	810017838	4" (2'-3.5') Flex Connector
4"	4BV5EFC	810017839	4" (2.5'-5') Flex Connector

Be sure to read the DuraConnect I installation instructions carefully.

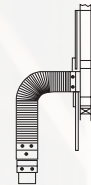
### Typical DuraConnect I Flexible Gas Vent Connector Installations.



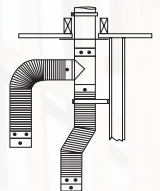
OFFSET THRU CEILING



90° OFFSET W/TEE



THRU THE WALL TO OVAL TYPE B GAS VENT



COMBINED VENT THRU CEILING

**DuraVent®**

© 2022 DuraVent. All rights reserved.  
 BVEFC 04/2022

Visit our website! [www.duravent.com](http://www.duravent.com)  
 links to catalogs, submittal, performance data, sizing guides,  
 calculators, brand merchandise, testimonials, and more!