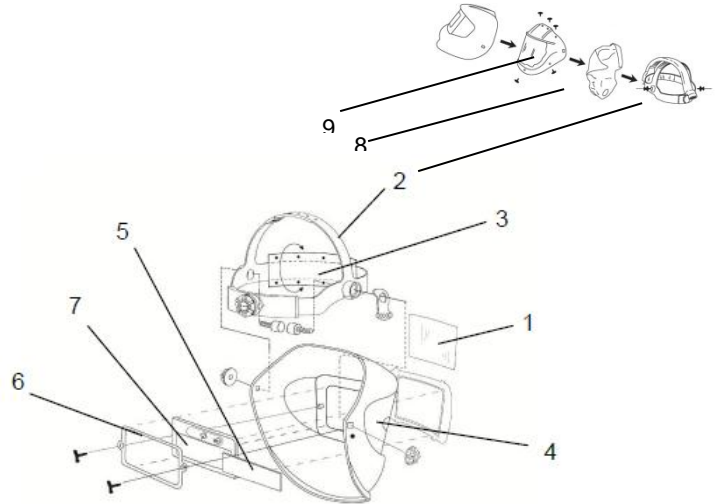


CUSTOMER DATA SHEET JACKSON SAFETY WH50 MULTIVIEW WELDING PAPR "V" HELMET Countries sold into: EMEA CDS No: J5014, J5023	Status: On Sale
	Date: Feb 2012
	Version: 1
	Replaces: N/A

FINISHED PRODUCT

J5014: WH50 Multiview Welding PAPR Helmet "V" Carbon
 J5023: WH50 Multiview Welding PAPR Helmet "V" Carbon 4/9-13 SM INT ADF



EC compliance mark:



DIN EN 166: 2002-04
 DIN EN 169: 2003-02
 DIN EN 175: 1997-08
 DIN EN 379: 2009-07 (J5023 only)
 DIN EN 12941: 2009

Suitable grinding/welding type applications:



- J5014 provided without a welding filter for the customer to choose from a range of Jackson Safety* filters
- Tested and certified to work only with the Jackson Safety* R60 Airmax blower unit (J5200)
- TH2 P classification according to DIN EN 12941: 2009

List of spare parts available for extended life time use:

1	J8338	Outer protective lens 89 x 142 mm
2	J5260	Welding PAPR head gear with air duct
3	J5462	Welding PAPR sweat band
4	J8358	WH50 Multiview side window right & left (blank)
5	J8303	Inner protective lens 109 x 66 mm (code J5023 only)
6	J8345	Lens retainer SM variable ADF
6	J8344	Lens retainer TN variable ADF (code J5014 only)
7	J8162	WF40 SM 4/9-12 INT ADF
7	J8187	WF40 4/9-13 TN EXT ADF (code J5014)
7	J8142	WF30 4/9-12 SM INT ADF (for code J5014)
8	J5251	PAPR F50 visor face seal
9	J5252	PAPR F50 visor cover lens

- "V" system for extended respiratory protection during combined grinding and welding tasks
- Face seal made of flame resistant Proban* material
- Over the head air duct for better weight distribution
- Provided with IRUV DIN5 side windows for widened peripheral vision and increased awareness
- Provided with KCP-exclusive SM technology 4/9-13 ADF with internal (INT) controls, typical switching speed (at 55oC): 0.04ms
- ADF fitted with two sensors and sensitivity and delay adjustment for fine tuning according to the light conditions
- Fitted with comfort head gear and sweat band

Instructions for use: Enclosed with each case

Case count: 1 complete unit per case Case size L x W x H: 374 x 234 x 265mm (ED)	Net (Gross) case weight: J5014: 1150 (1350)g J5023: 1300 (1500)g
---	---

IMPORTANT NOTE

This data was generated from samples which were taken to be typical of standard product. The data is given for information only and considered valid at the time of publication. Additional information can be supplied on request. Always review the instructions provided with each PPE device before assembly and use.