

# Stealth

WELDING  
MACHINES,  
HELMETS,  
PAPR &  
SAFETY  
PRODUCTS



from **SWP**<sup>TM</sup>

Selected by Professionals



# CONTENTS

## MIG INVERTERS

<b>DIGI-MIG 200LCD PFC</b> Multiprocess – 110V/230V	<b>4</b>
<b>DIGI-MIG 250-1 PHASE</b>	<b>5</b>
<b>DIG-MIG 300E</b> Air Cooled	<b>6</b>
<b>DIGI-MIG 250-3 PHASE</b> Multiprocess Single/Dual Pulse	<b>7</b>
<b>DIGI-MIG 400F</b> DC Inverter	<b>8</b>
<b>DIGI-MIG 400BF DUAL PULSE</b> Multiprocess Air Cooled	<b>9</b>

## TIG INVERTERS

<b>DIGI-TIG 180DC PULSE PFC MV</b> Multi Voltage – 110V/230V	<b>10</b>
<b>DIGI-TIG 200 AC/DC PULSE PFC MV</b> 110V/230V	<b>11</b>
<b>DIGI-TIG 320 AC/DC PULSE</b> Three Phase	<b>12</b>

## ARC INVERTERS

<b>DIGI-ARC 160LT</b> 230V	<b>13</b>
<b>DIGI-ARC 160PFC</b> Multi Voltage – 110V/230V	<b>14</b>
<b>DIGI-ARC 200LT</b> 230V	<b>15</b>

## PLASMA CUTTERS

<b>DIGI-CUT 40PFC</b> Multi Voltage – 110V/230V	<b>16</b>
<b>DIGI-CUT 60</b> Single Phase	<b>17</b>
<b>DIGI-CUT 100CNC</b> Three Phase	<b>18</b>

## **TORCHES, CONSUMABLES & COMPRESSORS**

## **ACCESSORIES**

## **TIG & ARC ACCESSORY KITS**

## **HEAD PROTECTION & PAPR**

<b>STEALTH DIGI-TECH</b> Variable Shade Welding Helmet 5-9 / 9-13	<b>22</b>
<b>STEALTH-XG</b> Flip-Up Welding/Grinding Helmet	<b>23</b>
<b>STEALTH-G</b> Grinding Helmet	<b>24</b>
<b>STEALTH VADER</b> Auto Darkening Welding Goggles	<b>25</b>
<b>STEALTH X-PLUS</b> Welding Helmet and Digi-Air PAPR System	<b>26</b>
<b>STEALTH-G</b> Grinding Helmet and Digi-Air PAPR System	<b>27</b>
<b>STEALTH-XG</b> Welding/Grinding Helmet and Digi-Air PAPR System	<b>28</b>
<b>SPARE PARTS</b>	<b>29-33</b>

## **STEALTH DIGI-FUME EXTRACTION**

**34**



## 9005H DIGI-MIG 200LCD PFC Multiprocess 110V/230V



ø 203mm (5kg)  
ø 102mm (1kg)



Spool Gun



Synergic



Input Voltage  
90-275V  
50/60HZ



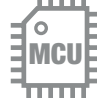
LCD  
320 x 480  
TFT



VRD  
safe  
Voltage  
Reduction  
Device



0.99  
Power  
Factor  
Correction



MCU control  
system



3  
PROOF  
Moisture ✓  
Salt spray ✓  
Corrosion ✓



Generator  
friendly

### FEATURES

- LCD displays 260,000 true colours
- Power factor more than 0.99
- Multiple advantages such as energy saving and wider input voltage
- Works with 110V and 230V
- Capable of loading up to 5kg spool
- Waveform control for added stability of the arc – even at low currents
- Equipped with temperature, voltage and current sensors for high protection
- M15-3 torch and regulator included



### SPECIFICATIONS

Input power voltage (V)	110/230±10%					
Frequency (Hz)	50/60					
	<b>MIG</b>	<b>TIG</b>	<b>MMA</b>			
Effective current – 110V	23.4	17.7	17.7			
Effective current – 230V	17.7	13.9	20.2			
	<b>MIG</b>	<b>TIG</b>	<b>MMA</b>	<b>MIG</b>	<b>TIG</b>	<b>MMA</b>
Rated input current (A)	35	27	27	27	22	32
Duty cycle (A) (40°C 10 min)	40%@140	40%@100		40%@200		
	60%@115	60%@85		60%@165		
	100%@90	100%@65		100%@130		
No load voltage – limited (V)	67 (MIG) 14 (TIG/MMA)					
Welding current range (A)	25~200 (MIG)					
Welding voltage range (V)	10~27 (MIG)					
Efficiency (%)	80					
Power factor	0.99					
Insulation class	H					
Protection class	IP23					
Cooling	Air					
Overall dimensions (mm)	505 x 210 x 330					
Weight (kg)	15.5					
Accessories included	3m Argon hose + Amphenol plug 3m earth return lead					



## 9006H DIGI-MIG 250-1 PHASE



ø 300mm (15kg)



Heavy Duty Cycle



Generator friendly

### FEATURES

- Waveform control for added arc stability – even at low currents
- Equipped with temperature, voltage and current sensors for high protection
- Capable of loading up to 15kg spool
- 4 rolls wire feeder fitted as standard
- Burnback control
- M25-3 torch and regulator included

### SPECIFICATIONS

Input power voltage (V)	1~230
Frequency (Hz)	50/60
Maximum (KVA)	11.5
Effective input current (A)	38
Welding voltage range (V)	13.5-26.5
Maximum no-load voltage (V)	47
Duty cycle (A) (40°C 10 min)	60% @ 250
	100% @ 200
Protection class	Ip23
Efficiency (%)	85
Insulation class	H
Cooling	Air
Overall dimensions (mm)	618 x 240 x 445
Weight (kg)	23
Accessories included	3m Argon hose
	3m earth return lead



## 9395H DIGI-MIG 300E Air Cooled



Heavy Duty  
Cycle



Synergic



Phase  
Loss  
Protection



3 Phase  
400V  
50Hz/60Hz



### FEATURES

- Syn Mig/Mig/MMA
- Large LCD display
- 4 rolls wire feed for 15kg spool
- 2T – 4T trigger action
- Pre and post gas flow

### SPECIFICATIONS

Input power voltage (V)	3 x 400
Supply current max. (A)	16
Rated power (kVA)	11.1
Fuse, slow (A)	T 16
No load voltage (V)	65
Welding current range (A)	30~300
Duty cycle (A)	40% @ 300 60% @ 250 100% @ 200
Wire speed (m/min)	0.6 – 22
Welding wire diameter (mm)	0.8 – 1.2
Efficiency (%)	87
Power factor	0.95
Insulation class	H
Protection class	IP21
Cooling	Air
Overall dimensions (mm)	795 x 540 x 700
Weight (kg)	31.0
Accessories included	Eco 36-3 torch, 3m Argon hose, 3m earth lead



## 9008H DIGI-MIG 250-3 PHASE Multiprocess Single/Dual Pulse



550V  
Tested in  
production



Heavy Duty  
Cycle



Phase  
Loss  
Protection



3 Phase  
400V



Synergic



Generator  
friendly

### FEATURES

- Devoted pulse curves activate for aluminium, mild steel, stainless steel and CuSi3
- Waveform control for added stability of the arc – even at low currents
- Variable amperage control with digital meter for simultaneous welding current and voltage display
- Equipped with temperature, voltage and current sensors for high protection
- Optional trolley and water cooling unit
- M25-3 torch and regulator included

### SPECIFICATIONS

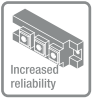
Input power voltage (V)	3~400		
	MIG	TIG	MMA
Maximum (KVA)	10.5	9.2	12.6
Effective input current (A)	14.0	12.5	15.5
Duty cycle (A) (40°C 10 min)	60% @ 250		
	100% @ 195		
Maximum no-load voltage (V)	15 (MMA)		
Welding current range (A)	15~250	10~250	10~250
Protection class	Ip23		
Efficiency (%)	80		
Insulation class	H		
Cooling	Air		
Overall dimensions (mm)	670 x 240 x 450		
Weight (kg)	26		
Accessories included	3m Argon hose + Amphenol plug		
	3m earth return lead		
	3m electrode lead		



**9396H-AC** Air Cooled  
**9396H-WC** Water Cooled  
**DIGI-MIG 400F**  
**DC Inverter**



Heavy Duty Cycle



IGBT Module



550V Tested in production



Phase Loss Protection



3 Phase 400V

**FEATURES**

- Waveform control for added arc stability, even at low currents
- Equipped with temperature, voltage and current sensors
- Variable amperage control with digital meter for a simultaneous welding current and tension display
- M501-4 torch and regulator included with water cooled package
- M36-3 torch and regulator included with air cooled package

**NB: 9396H-WC water cooled version illustrated.**

**SPECIFICATIONS**

Input power voltage (V)	3~400±10%
Frequency (Hz)	50/60
Maximum (KVA)	14.4
Effective input current (A)	28
Welding voltage range (V)	16-34
Maximum no-load voltage (V)	71
Duty cycle (A) (40°C 10 min)	60% @ 400
	100% @ 310
Protection class	Ip23
Efficiency (%)	85
Insulation class	H
Cooling	Air / Water
Overall dimensions (mm)	525 x 240 x 445
Weight (kg)	23.0
Accessories included	3m earth return lead
	5m interconnection lead





## 9009H DIGI-MIG 400BF DUAL PULSE Multiprocess Air Cooled



Heavy Duty Cycle



IGBT Module



550V Tested in production



Phase Loss Protection



3 Phase 400V



Generator friendly

### FEATURES

- Devoted pulse curves activate for aluminium, mild steel, stainless steel and CuSi3
- Waveform control for added stability of the arc – even at low currents
- Variable amperage control with digital meter for simultaneous welding current and tension display
- Equipped with temperature, voltage and current sensors for high protection
- Optional trolley and water cooling unit
- M36-3 torch and regulator included with air cooled package

### SPECIFICATIONS

Input power voltage (V)	3~400	
	MIG	MMA
Maximum (kVA)	16	12
Rated input current (A)	33	27
Effective current (A)	25	21
Duty cycle (A) (40°C 10 min)	60% @ 400 100% @ 310	
Maximum no-load voltage (V)	81	14
Welding current range (A)	15~400	10~400
Welding voltage range (V)	14~40 (MIG)	
Protection class	Ip23	
Efficiency (%)	85	
Insulation class	H	
Cooling	Air	
Overall dimensions (mm)	560 x 240 x 445	
Weight (kg)	23.5	
Accessories included	3m Argon hose 3m earth return lead	

**NB: Trolley and Water Cooler not included with a 9009H. Please order separately – see page 20.**



## 9010H DIGI-TIG 180DC PULSE PFC MV Multi Voltage 110V/230V



### FEATURES

- Tig/MMA functions
- Full digital control panel
- Slope in / Slope out
- 2T - 4T trigger function
- 0.5 - 200 pulse frequency

### SPECIFICATIONS

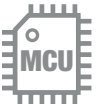
input power voltage	110±10%		230±10%	
	<b>TIG</b>	<b>MMA</b>	<b>TIG</b>	<b>MMA</b>
Effective input current (A)	10	18	10	13
Maximum (KVA)	3.6		5.4	
Input voltage frequency (Hz)			50/60	
No load voltage (V)			65	
Current adjustment range (A)	5-110		5-180	
Duty cycle (A) (40°C 10 min)	35% @ 110	30% @ 110	35% @ 180	25% @ 180
	60% @ 85	60% @ 80	60% @ 80	60% @ 80
	100% @ 65	100% @ 65	100% @ 110	100% @ 100
Protection class	Ip23			
Insulation class	H			
Up slope/Down slope (S)	0-10			
Pulse width range (%)	5-95			
Post-gas time adjustment range (S)	0-10			
Power factor	0.99			
Overall dimensions (mm)	465 x 146 x 278			
Weight (kg)	7.5			
Accessories included	3m Argon hose + Amphenol plug			



■ Carry Case supplied



Easy Arc Striking



MCU control system



Input Voltage



Power Factor Correction



Optional foot control



PULSE



Welding at extra low current



Optional Potentiometer remote control torch



Optional Up/Down remote control torch



Generator friendly



## 9011H DIGI-TIG 200 AC/DC PULSE PFC MV 110V/230V



### FEATURES

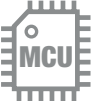
- Full digital control panel
- 0.5 - 200 pulse frequency
- Multi AC wave form choices
- Welds all forms of steels – including aluminium

### SPECIFICATIONS

Input power voltage	110±10%		230±10%	
<b>AC/DC</b>	<b>+MMA</b>	<b>+TIG</b>	<b>+MMA</b>	<b>+TIG</b>
Effective input current – AC (A)	19	23	18	16
Effective input current – DC (A)	19	23	18	16
Maximum (KVA)	4.2		7.4	
Input voltage frequency (Hz)			50/60	
No load voltage (V)			68	
	<b>MMA</b>	<b>TIG</b>	<b>MMA</b>	<b>TIG</b>
Current adjustment range (A)	5-130	5-160	5-200	5-200
	<b>MMA</b>	<b>TIG</b>	<b>DC</b>	<b>AC</b>
Duty cycle (A) (40°C 10 min)	30% @ 130		35% @ 200	
	60% @ 110	60% @ 160	60% @ 140	60% @ 200
	100% @ 80	100% @ 125	100% @ 110	100% @ 155
Protection class			Ip23	
Insulation class			H	
Slope out (S)			0-10	
Pulse width range (%)			5-95	
Pre-gas time adjustment range (S)			0.1-10	
Post-gas time adjustment range (S)			0-10	
Overall dimensions (mm)			492 x 189 x 350	
Weight (kg)			15	
Accessories included			3m Argon hose + Amphenol plug	



Easy Arc Striking



MCU control system



Input Voltage



Power Factor Correction



Optional foot control



PULSE



Welding at extra low current



Optional Potentiometer remote control torch



Optional Up/Down remote control torch



Generator friendly



## 9012H DIGI-TIG 320 AC/DC PULSE Three Phase



### FEATURES

- Full digital control panel
- 2T - 4T trigger function
- 0.5 - 200 pulse frequency
- Multi AC wave form choices
- Welds all forms of steels – including aluminium
- Fitted with power off-take for water cooler

### SPECIFICATIONS

Input power voltage	3/400±10%	
	<b>TIG</b>	<b>MMA</b>
Effective input current – AC (A)	15	19
Effective input current – DC (A)	16	21
Maximum (KVA)	13	
Input voltage frequency (Hz)	50	
No load voltage (V)	61	
Current adjustment range (A)	10-320	
Duty cycle (A) (40°C 10min)	60% @ 320	
	100% @ 250	
Arc – Starting	HF/LIFT	
Protection class	Ip23	
Insulation class	H	
Slope out (S)	0-10	
Clean width (%)	5-95	
Pre-gas time adjustment range (S)	0.1-2	
Post-gas time adjustment range (S)	0-10	
Clearance effect (%)	5-95	
Efficiency (%)	≥85	
Overall dimensions (mm)	550 x 240 x 445	
Weight (kg)	25	
Accessories included	3m Argon hose + Amphenol plug	



Easy Arc Striking



3 Phase 400V



Optional foot control



PULSE



Welding at extra low current



Optional Up/Down remote control torch



Heavy Duty Cycle



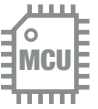
Phase Loss Protection



Generator friendly



## 9021H DIGI-ARC 160LT 230V



MCU control system



Input Voltage  
230V  
50/60Hz



Moisture ✓  
Salt spray ✓  
Corrosion ✓



Generator friendly

### FEATURES

- Digital display
- Built-in hot start, anti sticking and arc force
- Lift/Tig facility
- Carry case can be supplied as an optional extra (9029)

### SPECIFICATIONS

Input power voltage (V)	230±10%	
Frequency (Hz)	50/60	
	<b>MMA</b>	<b>TIG</b>
Effective input current (A)	17	24
Maximum (KVA)	8.5	
Current adjustment range (A)	10-160	
Maximum no-load voltage (V)	62	
Duty cycle (A) (40°C 10 min)	40% @ 160	
	60% @ 135	
	100% @ 105	
Efficiency (%)	≤80	
Protection class	Ip23	
Insulation class	H	
Cooling	Air	
Electrode diameter (mm)	1.6-4.0	
Electrode type	6013, 7018, etc	
Overall dimensions (mm)	290 x 135 x 220	
Weight (kg)	4.5	
Accessories included	3m earth return lead + 3m electrode lead	



## 9022H DIGI-ARC 160PFC Multi Voltage 110V/230V



Input Voltage



Moisture ✓  
Salt spray ✓  
Corrosion ✓



Voltage Reduction Device



Power Factor Correction



Generator friendly

### FEATURES

- PFC input
- Arc force for easy electrode striking
- Digital display
- Built-in hot start, anti sticking and arc force
- Lift/Tig facility
- Excellent duty cycle

### SPECIFICATIONS

Input power voltage (V)	110±10%		230±10%	
Frequency (Hz)	50/60			
	<b>TIG</b>	<b>MMA</b>	<b>TIG</b>	<b>MMA</b>
Effective input current (A)	10	15.4	9.9	14.5
Maximum (KVA)	2.7		5.3	
Current adjustment range (A)	10-90		10-160	
Maximum no-load voltage (V)	14.5			
Efficiency (%)	≤80			
Duty cycle (A) (40°C 10 min)	40% @ 90	40% @ 90	40% @ 160	40% @ 160
	60% @ 75	60% @ 75	60% @ 135	60% @ 135
	100% @ 60	100% @ 60	100% @ 105	100% @ 105
Protection class	Ip23			
Insulation class	H			
Cooling	Air			
Overall dimensions (mm)	325 x 146 x 278			
Weight (kg)	6.0			
Accessories included	3m earth return lead + 3m electrode lead			

■ Carry Case supplied



## 9023H DIGI-ARC 200LT 230V



Input Voltage



Heavy Duty Cycle



Generator friendly

### FEATURES

- Excellent duty cycle
- Digital display
- Built-in hot start, anti sticking and arc force
- Lift/Tig facility



■ Carry Case supplied

### SPECIFICATIONS

input power voltage (V)	230±10%	
Frequency (Hz)	50/60	
	<b>TIG</b>	<b>MMA</b>
Effective input current (A)	25	36
Maximum (KVA)	10.8	
Current adjustment range (A)	10-200	
Maximum no-load voltage (V)	61	
Duty cycle (A) (40°C 10 min)	60% @ 200	
	100% @ 155	
Efficiency (%)	≤85	
Protection class	Ip23	
Insulation class	H	
Cooling	Air	
Electrode diameter (mm)	1.6-5.0	
Electrode type	6013, 7018, etc	
Overall dimensions (mm)	365 x 150 x 240	
Weight (kg)	6.2	
Accessories included	3m earth return lead + 3m electrode lead	



## 9030H DIGI-CUT 40PFC Multi Voltage 110V/230V



Input Voltage



Power Factor Correction



Generator friendly

### FEATURES

- Generator friendly
- Contact arc striking
- Complete with air regulator
- Clean cuts to 15mm



■ **PC7100H**  
Plasma torch included  
See page 19 for spares

### SPECIFICATIONS

	110V	230V	
Input power voltage (V)	110±10%	230±10%	
Frequency (Hz)	50/60		
Effective input current (A)	20.4	16	
Maximum (KVA)	3.8	5.2	
Current adjustment range (A)	20-30	20-40	
Maximum no-load voltage (V)	320		
Duty cycle (A) (40°C 10 min)	35% @ 30	50% @ 40	
	60% @ 22	60% @ 36	
	100% @ 20	100% @ 30	
Severance cut for carbon steel (mm)	≤20	≤25	
Production cut for carbon steel (mm)	≤10	≤15	
	stainless steel (mm)	≤10	≤15
	aluminium (mm)	≤8	≤12
	copper (mm)	≤6	≤10
Air operating pressure (psi)	50-90 (3.5-6 bar)		
Air operating flow (l/min)	160 (5.65 cfm)		
Protection class	Ip23		
Insulation class	H		
Cooling	Air		
Overall dimensions (mm)	510 x 146 x 278		
Weight (kg)	8		
Accessories included	3m earth return lead		



■ Carry Case supplied





## 9031H DIGI-CUT 60 Single Phase



Input Voltage



Generator friendly

### FEATURES

- Lightweight
- Auto over voltage, over temperature and over current protection
- Includes air pressure regulator



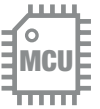
- **PC7100H**  
Plasma torch included  
See page 19 for spares

### SPECIFICATIONS

Input power voltage (V)	230±10%
Frequency (Hz)	50/60
Effective input current (A)	40
Maximum (KVA)	9.5
Current adjustment range (A)	20-60
Maximum no-load voltage (V)	400
Duty cycle (A) (40°C 10 min)	95% @ 60
	100% @ 58
Severance cut for carbon steel (mm)	≤35
Production cut for carbon steel (mm)	≤25
stainless steel (mm)	≤25
aluminium (mm)	≤20
copper (mm)	≤14
Air operating pressure (psi)	50-90 (3.5-6 bar)
Air operating flow	160
Protection class (l/min)	Ip23 (5.65 cfm)
Insulation class	H
Cooling	Air
Overall dimensions (mm)	640 x 240 x 445
Weight (kg)	23
Accessories included	3m earth return lead



## 9032H DIGI-CUT 100CNC Three Phase



MCU control system



3 Phase  
400V



CNC option



Phase  
Loss  
Protection



Generator  
friendly

### FEATURES

- 45mm production cut
- Auto over voltage, over temperature and over current protection
- Includes air pressure regulator
- Contact arc striking



- **PC7200H**  
Plasma torch included  
See page 19 for spares

### SPECIFICATIONS

Input power voltage (V)	3/400±10%
Frequency (Hz)	50/60
Maximum (KVA)	19.4
Rated input current (A)	28
Current adjustment range (A)	20-100
Maximum no-load voltage (V)	420
Duty cycle (A) (40°C 10 min)	100% @ 100
Severance cut for carbon steel (mm)	≤55
Production cut for carbon steel (mm)	≤45
stainless steel (mm)	≤45
aluminium (mm)	≤36
copper (mm)	≤20
Air operating pressure (psi)	50-90 (3.5-6 bar)
Air operating flow (l/min)	260 (9.18 cfm)
Protection class	Ip23
Insulation class	H
Cooling	Air
Overall dimensions (mm)	620 x 240 x 445
Weight (kg)	30.5
Accessories included	3m earth return lead



# TORCHES, CONSUMABLES & COMPRESSORS

## STEALTH DIGI-CUT 40 PFC & DIGI-CUT 60

Part No.	Description	Qty
<b>PC7003</b>	Electrode – Standard	5
<b>PC7006</b>	Tip Contact Cutting – 30-40A	5
<b>PC7007</b>	Flat Tip Cutting – 40-50A	5
<b>PC7008</b>	Flat Tip Cutting – 50-60A	5
<b>PC7013</b>	Nozzle Retaining Cap	1
<b>PC7015</b>	Double Pointed Spacer	1

### PC7100H

- Air Flow: 110 lpm
- Rating: 60A @ 80% duty cycle



## STEALTH DIGI-CUT 100 CNC

Part No.	Description	Qty
<b>52556</b>	Electrode Standard	5
<b>51248.15</b>	Tip Cutting 1.5 – 30-40A	10
<b>60501</b>	Retaining Cap – 80-100A	1
<b>60444</b>	Double Pointed Spacer	1
<b>51278.15</b>	Tip Contact Cutting 1.5 – 100A	10
<b>60502</b>	Shield Cup Body	1
<b>60505</b>	Shield Cap Hand – 80-100A	5

### PC7200H

- Air Flow: 210 lpm
- Rating: 100A @ 60% duty cycle



## RECOMMENDED COMPRESSORS FOR PLASMA CUTTERS



### FOR USE WITH 9030H

Belt Driven Static Compressor at 100% Duty Cycle

### **BA3/200BS1** OR **BA3/270BS1**

200 ltr / 3HP / 240V

270 ltr / 3HP / 240V

### FOR USE WITH 9031H & 9032H

Belt Driven Static Compressor at 100% Duty Cycle

### **BA55/200BS3** OR **BA55/270BS3**

200 ltr / 5.5HP / 415V

270 ltr / 5.5HP / 415V



**9029**  
Carry Case



**9824H**  
Welding Trolley



**2068**  
Single Stage 2g  
Argon/Co2 Regulator –  
35 lpm



**9826H**  
Foot Switch



**9819H**  
5 Ltr Water Cooler  
■ 415V  
■ Water level visible on front panel  
■ For Mig or Tig water cooled torch

To fit: 9009H, 9012H, 9396H

# TIG & ARC ACCESSORY KITS

These Stealth Accessory Kits are included with the following machines

## **9832H** – FOR USE WITH 9007H & 9008H

**Air Cooled MIG Package** consisting of:

- **WP17-12SZ** Torch
- **WP18AK** Accessory Kit
- **D3595-1-1** TIG Adaptor
- **WE25/12** 12 Pin Plug (Pins 2 & 3)

## **9862H** – FOR USE WITH 9000H & 9005H

**Air Cooled MIG Package** consisting of:

- **WP17-12SZ** Torch
- **WP17AK** Accessory Kit
- **D3595-1-1** TIG Adaptor
- **WE25/12** 12 Pin Plug (Pins 2 & 3)

## **9821H** – FOR USE WITH 9010H

**Air Cooled TIG Package** consisting of:

- **WP17-12SZ** Torch
- **WP17AK** Accessory Kit
- **D3595-1-1** TIG Adaptor
- **EC32LD** Earth Lead 3m
- **EH32LD** Electrode Lead 3m
- **WE25/12** 12 Pin Plug (Pins 8 & 9)

## **9822H** – FOR USE WITH 9010H

**Water Cooled TIG Package** consisting of:

- **WP20-12SZ** Torch
- **WP20AK** Accessory Kit
- **D3595-1-1** TIG Adaptor
- **9829** 3/8" Quick Disconnect Adaptor Kit (consists of 2 x M5028 quick release nipples and ECK31 hose clamp)
- **EC32LD** Earth Lead 3m
- **EH32LD** Electrode Lead 3m
- **WE25/12** 12 Pin Plug (Pins 8 & 9)

**IMPORTANT** – Water cooled torch will exceed maximum amperage of this machine

## **9827H** – FOR USE WITH 9011H & 9012H

**Air Cooled TIG Package** consisting of:

- **WP26-12SZ** Torch
- **WP18AK** Accessory Kit
- **D3595-1-1** TIG Adaptor
- **EC32LD** Earth Lead 3m
- **WE25/12** 12 Pin Plug (Pins 8 & 9)

**IMPORTANT** – Maximum operating amps on this package are 200 DC and 150 AC

## **9828H** – FOR USE WITH 9011H & 9012H

**Water Cooled TIG Package** consisting of:

- **WP18-12SZ** Torch
- **WP18AK** Accessory Kit
- **D3595-1-1** TIG Adaptor
- **9829** 3/8" Quick Disconnect Adaptor Kit (consists of 2 x M5028 quick release nipples and ECK31 hose clamp)
- **EC32LD** Earth Lead 3m
- **WE25/12** 12 Pin Plug (Pins 8 & 9)

**IMPORTANT** – Water cooled torch will exceed maximum amperage of this machine

## **9808H** – FOR USE WITH 9020H

**Scratch Start Package** consisting of:

- **WP9V-12** Torch
- **WP9AK** Accessory Kit
- **D3595-1-3MT** Extended TIG Adaptor

## **9806** – FOR USE WITH 9021H & 9022H

**Scratch Start TIG Package** consisting of:

- **WP17V-12** Torch
- **WP17AK** Accessory Kit
- **D3595-1-3MT** Extended TIG Adaptor

## **9807** – FOR USE WITH 9023H & 9024

**Scratch Start TIG Package** consisting of:

- **WP26V-12** Torch
- **WP18AK** Accessory Kit
- **D3595-1-3MT** Extended TIG Adaptor

## 3049-ST STEALTH DIGI-TECH Variable Shade Welding Helmet 5-9 / 9-13



### TRUECOLOUR LENS

#### FEATURES

- Optical classification: 1/1/1/1
- Digital variable shade filter: 5-9 / 9-13
- Cartridge size: 114 x 133mm
- Viewing area: 100 x 83.4mm
- Switching times: Light to Dark: 0.08 ms  
Dark to Light: 0.1-0.9 secs
- Polycarbonate lens: 3021 – 106 x 66 (inner)  
1482 – 114 x 133 (outer)
- Grinding function with warning flash
- Four detection sensors offer wider detection of welding arc
- Adjustable Sensitivity/Delay
- Shell 'B' rated for impact protection
- UV/IR protection up to DIN 15
- Tig welding from 3 amps
- CE EN175 / EN379
- Low battery warning light
- Includes spare lenses and helmet bag

#### ADF LENS FEATURES

CE Classification	1/1/1/1
True Colour	Yes
View Size	100 x 60 mm
Arc Sensor	4
Shade Range	4/5-9/9-13
Delay Range	0.1-0.9s
Shade number of POWER OFF state	3.6#
Power On/Off	Fully Automatic
Adjustment Mode	Wireless remote control
Switching Time	0.08ms
Grinding Function	Yes
Cutting Function	Yes, Shade 5#-8# adjustable
Low Battery Indicator	Yes
Low Amperage TIG Rated	3A
Power Supply	Solar cell, Li-ion rechargeable
Certification	CE, ANSI, CSA, AS/NZS
Display	OLED
Mode Setting	Press and Turn
Short Press (<1s)	Shade → Sensitivity → Delay Time
Long Press (>1s)	Welding → Grinding → Cutting
Power Supply	Li-ion rechargeable
Battery Chargeable time	>500 times



■ Advanced Headgear

## 3055 STEALTH-XG Flip-Up Welding/ Grinding Helmet



### TRUECOLOUR LENS

#### FEATURES

- Lightweight, ergonomic design with high impact resistance material
- Flip up with large clear view for grinding/cutting
- All-around head protection
- Fast and easy switch between Grinding and Welding
- Simple in/out structure for convenient replacement of external cover lens
- User-friendly remote design with wireless interface and OLED display
- Multi-featured interface menu provides easy and quick ADF setting
- Remote can either be locked on helmet or taken off
- Environmentally friendly rechargeable Li-ion battery design
- No battery replacement required
- Lightweight, slim compact design to reduce fatigue and increase comfort
- The ADF is 27% thinner and 20% lighter
- Unprecedented true colour technology provides a true visual world

#### ADF LENS FEATURES

CE Classification	1/1/1/1
True Colour	Yes
View Size	100 x 60 mm
Arc Sensor	4
Shade Range	4/5-9/9-13
Delay Range	0.1-0.9s
Shade number of POWER OFF state	3.6#
Power On/Off	Fully Automatic
Adjustment Mode	Wireless remote control
Switching Time	0.08ms
Grinding Function	Yes
Cutting Function	Yes, Shade 5#-8# adjustable
Low Battery Indicator	Yes
Low Amperage TIG Rated	3A
Power Supply	Solar cell, Li-ion rechargeable
Certification	CE, ANSI, CSA, AS/NZS
Display	OLED
Mode Setting	Press and Turn
Short Press (<1s)	Shade → Sensitivity → Delay Time
Long Press (>1s)	Welding → Grinding → Cutting
Power Supply	Li-ion rechargeable
Battery Chargeable time	>500 times



■ Advanced Headgear

**3056**

## **STEALTH-G**

Grinding Helmet



■ Comfort headband

### FEATURES

- Lightweight, stylish and ergonomic design
- High impact resistance polycarbonate visor
- Excellent front and peripheral vision
- All-round head protection



### SHADE 3 LENS AVAILABLE

- Different shade flip-up and inner visor effectively provides UV/IR protection
- Applicable to welding, grinding and cutting
- Fast and easy replacement of flip-up and inner visor



## 3057 STEALTH VADER Auto Darkening Welding Goggles

# Stealth VADER



■ Handy carry bag with Proban cape included

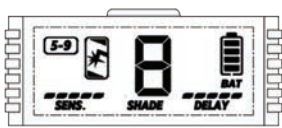
### FEATURES

- Compact auto-darkening goggles allow users to weld in limited spaces
- Lightweight, ergonomic shell and headband design provides comfortable wearing
- Prescription spectacles can be worn
- Optional lighting accessory available
- Adjustable shade 3/5-9/9-13 for use with Mig, Tig, Stick, Gas Welding and Cutting
- Super low power consumption design with automatic energy control
- Automatically enters sleep mode if no signal is accessed within 30 minutes and returns to standby state immediately the goggles are removed
- Unique defog design helps provide constant clear viewing
- Replaceable CR2450 battery offers more than 1000 hours continuous working time
- Parameters settings can be easily operated without removing

### SPARE PARTS

- See page 32

### DISPLAY SCREEN



WELD Mode (5-9)



CUT Mode (5-8)



WELD Mode (9-13)



CUT Mode (3)

### SPECIFICATIONS

CE classification	1/1/1/2
True colour	Yes
Lens size	100 x 40 mm panoramic view
Filter dimensions	171.5 x 77.5 mm
Inner protection plate	144.4 x 61.5 x 1 mm 113.5 x 42.7 x 1mm
Arc sensors	2
Shade range	3/5-9/9-13
Power On/Off	Fully automatic Use vibration detection and button wake up
Control	External push button LCD display
Switching time	0.08 ms
Grind function	Yes (with LED indicator)
Low battery indicator	Yes
Low amperage Tig rated	5A
Power supply	1 x CR2450 (replaceable)
Battery life time	1000 hours
Operating temperature	-10°C ~ +65°C
Certification	CE, ANSI, CSA, AS, NZS

**4044**

## STEALTH X-PLUS

Welding Helmet and  
Digi-Air PAPR System



### HELMET FEATURES

- As 3049-ST on page 22

### HELMET SPARE PARTS

- See page 31

### PAPR FEATURES

- EN 12941 / TH3 PR SL approval
- Automatically variable air flow control – 170-200-230 l/min
- Auto shutdown in standby mode if unused for 30 minutes
- LCD – Air flow level and data
  - Battery life
  - Filter loading status
- Warning light and audio alarms with vibration for:
  - Filter Block, Low Battery and Overheating
- Noise: Max 73dB
- Dimensions: 240 x 165 x 70 mm (L x W x T)
- Weight: 1370g (including filter, belt and battery)  
1020g (excluding battery)
- Battery operating time:
  - Level 1: >8 hours
  - Level 2: >6 hours
  - Level 3: >4 hours

For PAPR spare parts – see page 33



Supplied with a carrying bag – ideal for transportation and storage of spare parts

**5044**

## STEALTH-G

Grinding Helmet and Digi-Air PAPR System



### HELMET FEATURES

- Lightweight, stylish and ergonomic design
- High impact resistance polycarbonate visor
- Excellent front and peripheral vision
- All-round head protection

### HELMET SPARE PARTS

- See page 30

### PAPR FEATURES

- See page 26



### SHADE 3 LENS AVAILABLE

- Alternative shade flip-up and inner visor effectively provides UV/IR protection
- Applicable to welding, grinding and cutting
- Fast and easy replacement of flip-up and inner visor



Supplied with a carrying bag – ideal for transportation and storage of spare parts

**6044**

## STEALTH-XG

Welding/Grinding Helmet and Digi-Air PAPR System



### TRUECOLOUR LENS

#### HELMET FEATURES

- Lightweight, ergonomic design with high impact resistance material
- Flip up with large clear view for grinding/cutting
- All-around head protection
- Fast and easy switch between Grinding and Welding
- Simple in/out structure for convenient replacement of external cover lens
- User-friendly remote design with wireless interface and OLED display
- Multi-featured interface menu provides easy and quick ADF setting
- Remote can either be locked on helmet or taken off
- Environmentally friendly rechargeable Li-ion battery design
- No battery replacement needed
- Lightweight, slim compact design to reduce fatigue and increase comfort
- The ADF is 27% thinner and 20% lighter
- Unprecedented true colour technology provides a true visual world
- Supplied with a carrying bag

#### HELMET SPARE PARTS

- See page 29

#### PAPR FEATURES

- See page 26

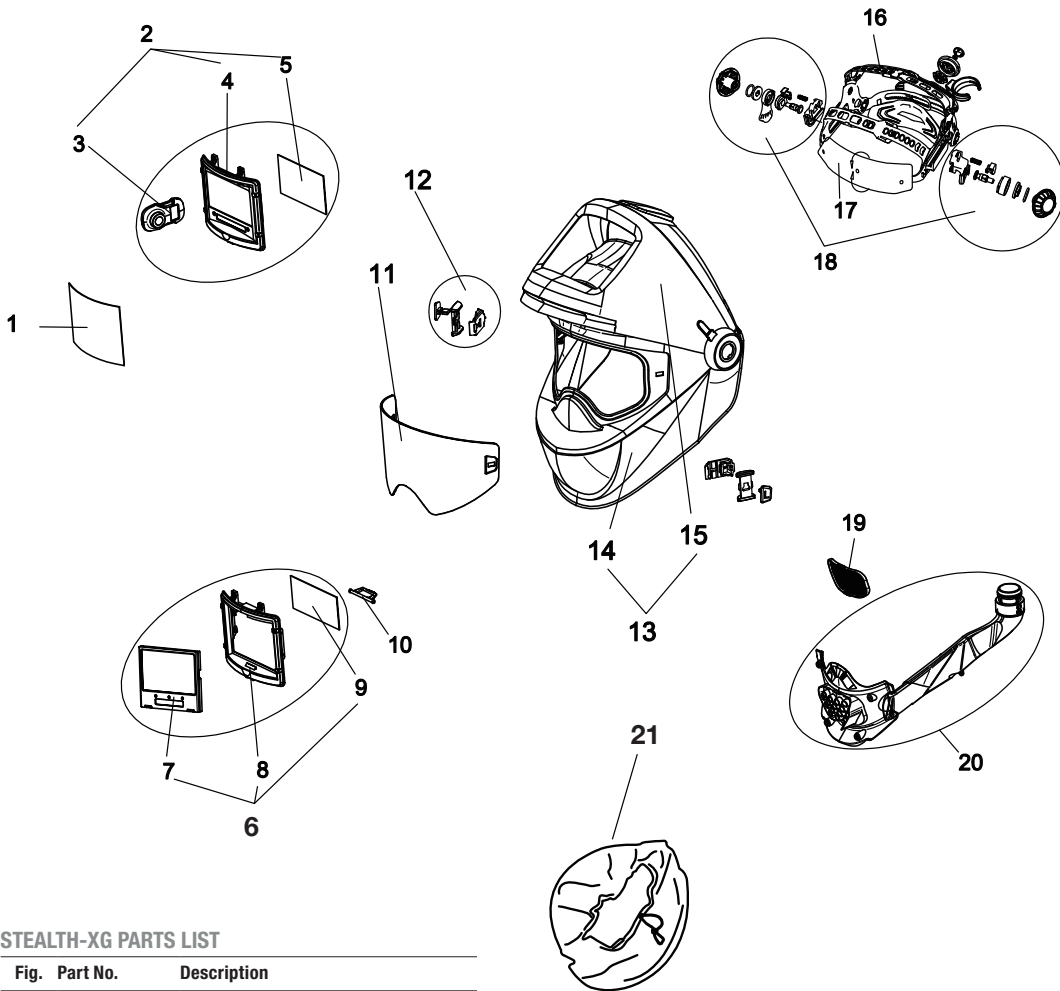


Supplied with a carrying bag – ideal for transportation and storage of spare parts

# HEAD PROTECTION SPARE PARTS

## 6044 STEALTH-XG

### Parts List

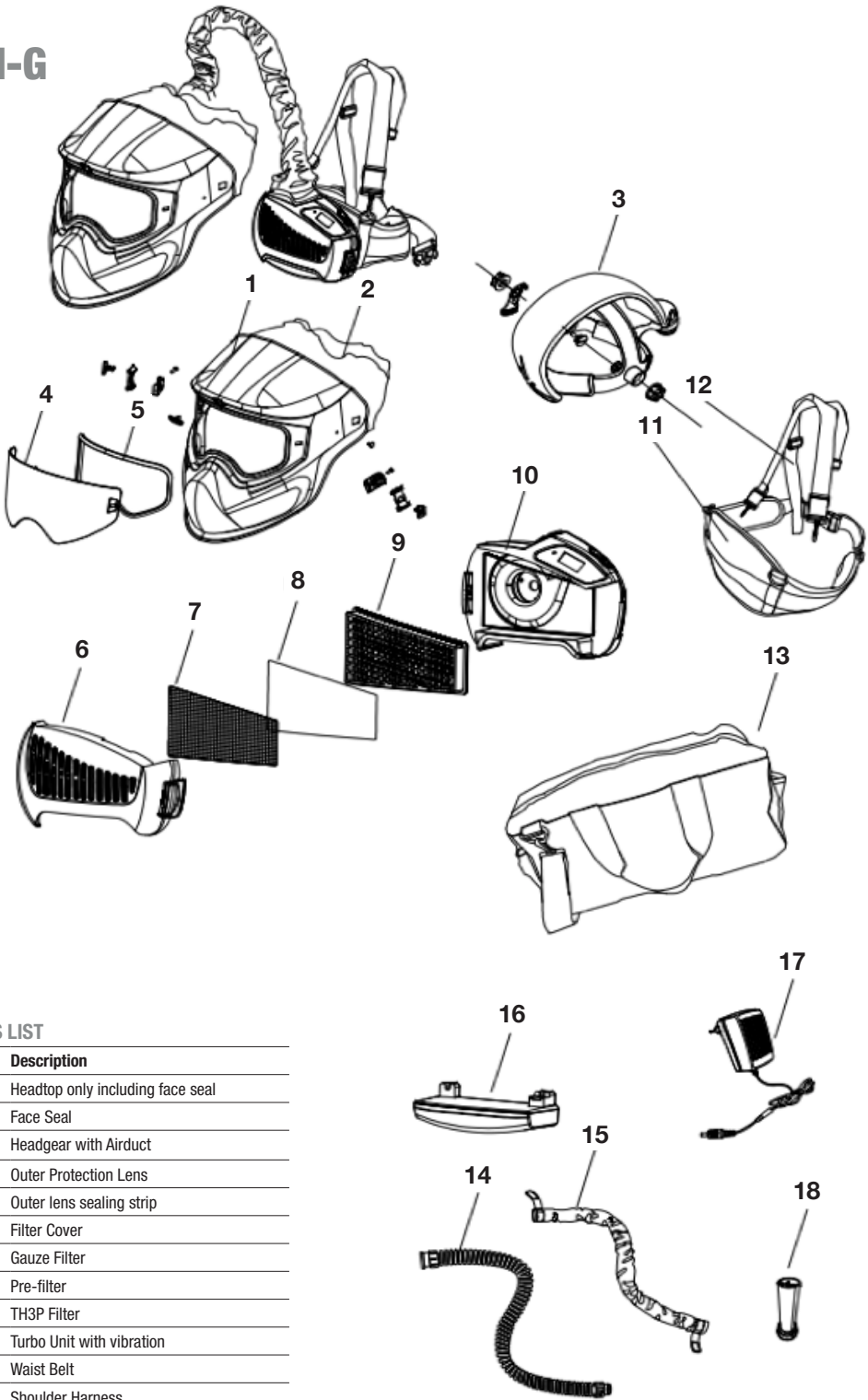


#### STEALTH-XG PARTS LIST

Fig.	Part No.	Description
1	3026	Outer protection lens 118 x 97 x 1 mm
2	6044-02	ADF
3	6044-03	Remote control
4	6044-04	ADF (without Remote control)
5	6044-05	Inner protection lens 104.5 x 64 x 1 mm
6	6044-06	XA-1131 (I) ADF SET
7	6044-07	XA-1131(1) ADF
8	6044-08	ADF Frame
9	3021	Inner protection lens 105.8 x 65.8 x 1 mm
10	6044-10	ADF Lock
11	6044-11	Inner lens SG.PC-SN.1-curve
12	6044-12	Slider lock unit
13	6044-13	Helmet
14	6044-14	Helmet Shell (A)
15	6044-15	Helmet Shell B
16	6044-16	Headgear
17	6044-17	Sweatband
18	6044-18	Headgear Fasteners
19	6044-19	Dust Screen
20	6044-20	Air duct
21	6044SEAL	Face Seal

# HEAD PROTECTION SPARE PARTS

## 5044 STEALTH-G Parts List



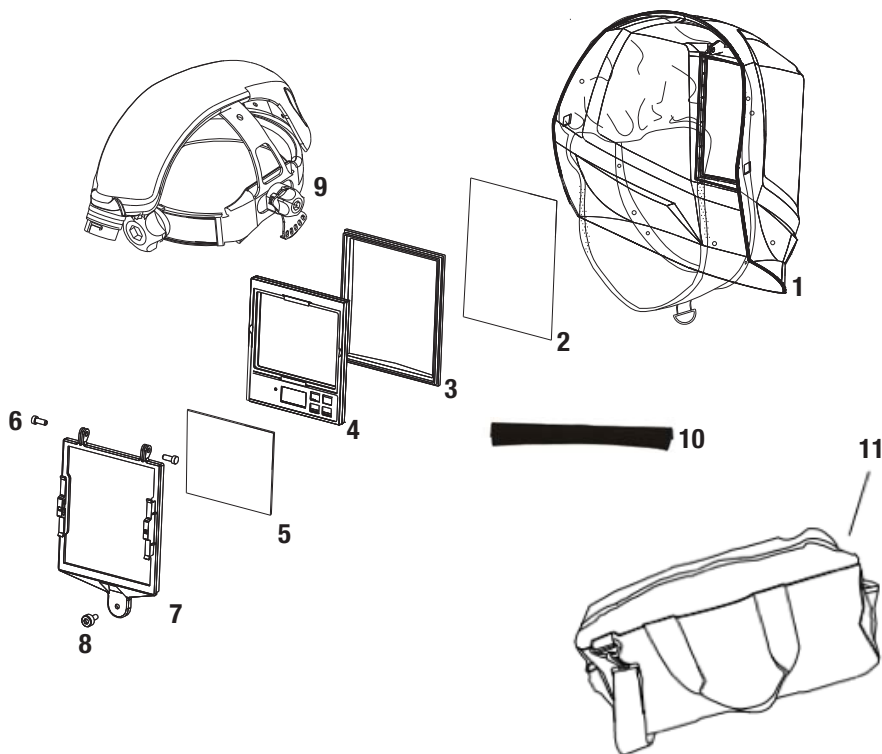
### STEALTH-G PARTS LIST

Fig.	Part No.	Description
1	5044HEAD	Headtop only including face seal
2	5044SEAL	Face Seal
3	3044BAND	Headgear with Airduct
4	5024	Outer Protection Lens
5	5024SEAL	Outer lens sealing strip
6	5044COV	Filter Cover
7	3044GAU	Gauze Filter
8	3044PRE	Pre-filter
9	3044P3	TH3P Filter
10	5044BLOW	Turbo Unit with vibration
11	3044BLT	Waist Belt
12	3044HARN	Shoulder Harness
13		Carry Bag
14	3044HOSE	Breathing Hose
15	3044HCOV	Breathing Hose Cover
16	3044BAT	Rechargeable Battery
17	3044CHA	Battery Charger
18	3044TEST	Air Flow Tester

# HEAD PROTECTION SPARE PARTS

## 4044 STEALTH WELDING HELMET

### Parts List



#### STEALTH 4044 HEADTOP PARTS LIST

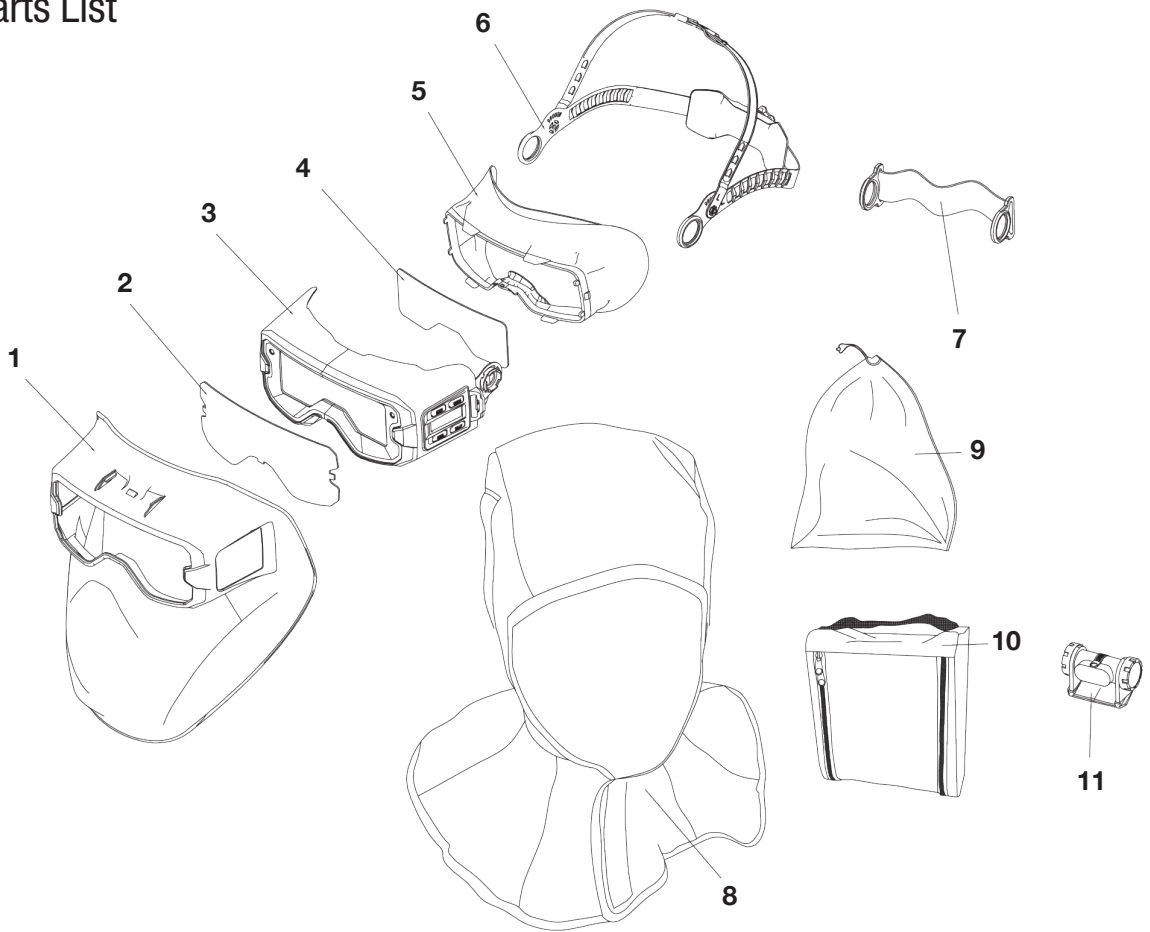
Fig.	Part No.	Description
1	4044HELM	Helmet Shell c/w Face Seal
2	1482	Outer Protection Lens
3	4044RET	Lens Retainer
4	3054	Auto Darkening Filter (ADF)
5	3025	Inner Protection Lens
6	3044CLIP	Clip (x2)
7	4039CRAD	ADF Cradle
8	3044SCRE	Screw Fixing Lens Retainer
9	4044BAND	Headgear with Airduct
10	4044SB	Sweatband
11	4044BAG	Carry Bag

# HEAD PROTECTION SPARE PARTS

**3057**

## **STEALTH VADER**

### Parts List



#### STEALTH VADER PARTS LIST

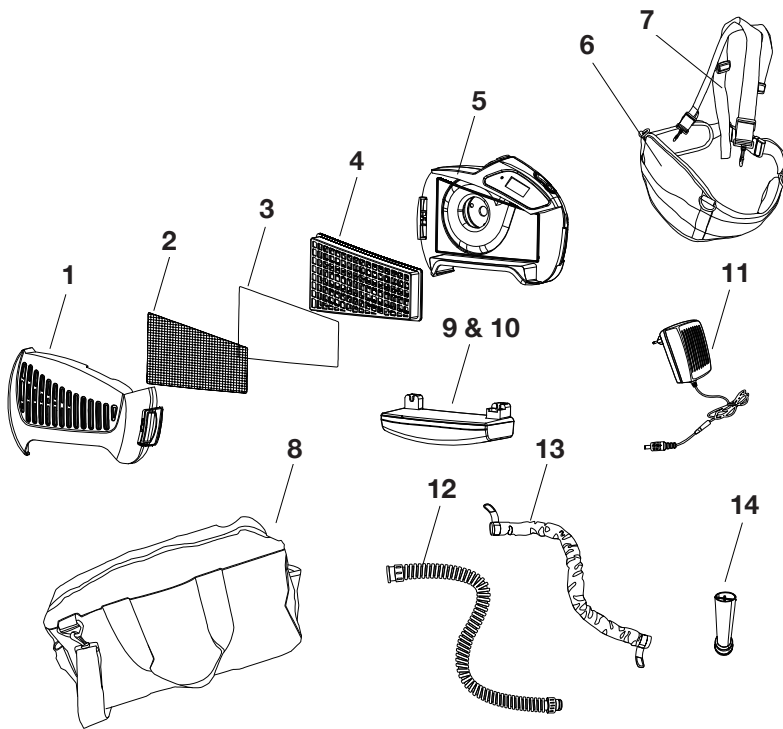
Fig.	Part No.	Description
1	3057-01	Shell
2	3057-02	Outer Protection Lens: 143 x 61.1 x 1 mm
3	3057-03	Goggles
4	3057-04	Inner Protection Lens: 113.5 x 42.8 x 1 mm
5	3057-05	Silicone Padding
6	3057-06	Headgear
7	3057-07	Elastic Headband
8	3057-08	Propan Cape
9	3057-09	Carry Bag Inner
10	3057-10	Carry Bag Outer
11	3057-11	LED Head Light



# PAPR SYSTEM SPARE PARTS

## STEALTH PAPR SYSTEM

### Parts List



#### PAPR SYSTEM PARTS LIST

Fig.	Part No.	Description
1	4044COV	Filter Cover
2	3033GAU	Spark Arrestor
3	3044PRE	Pre-filter
4	3044P3	Filter
5	3044BLOW	Turbo Unit
6	3044BLT	Waist Belt (PE)
7	3044HARN	Shoulder Harness
8	4044BAG	Carry Bag
9	3044BAT	Standard Battery 4400mAh
10	3044BATHD	Heavy Duty Battery 6800mAh
11	3044CHA	Battery Charger
12	6044-29	Breathing Tube flexible 0.6m
13	6044-30	Anti-fire Cloth of Breathing Tube 1.48m
14	3044 TEST	Air Flow Tester

# WELDING FUME EXTRACTION

## WFE003 STEALTH DIGI-FUME – 110V

## WFE004 STEALTH DIGI-FUME – 240V

# Stealth DIGI-FUME

### FEATURES

- 4-stage filtration
- 95% efficiency
- Extraction capacity: 1200m<sup>3</sup>/h
- Hepa filter
- Hour counter
- 3m high construction arms
- Robust knuckle joints



MIG/MAG



MIG/MAG  
PULSE



MMA  
electrode  
welding  
machine



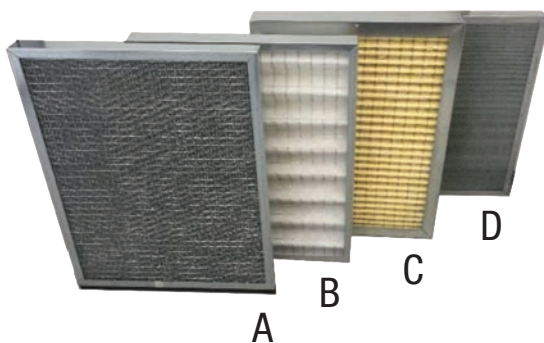
Filtration efficiency according to standard EN779

Extraction of welding fumes with medium-low concentrations of pollutants, in closed or difficult to reach environments, with normal systems for fumes reduction

Electrical control panel equipped with lights indicating machine operation and any clogged filters



ABOVE: Robust knuckle joint.  
LEFT: Hour meter.  
BELOW: Nozzle and average flow



Electric high performance centrifugal extraction fan positioned downstream of the filter section in a soundproof compartment

Position	Description	Codes
A	Metal mesh prefilter	WFS006
B	Prefilter	WFS007
C	High efficiency filter	WFS008
D	5kg activated carbon filter	WFS009
Power	1.1kW - 1.5HP	
Weight	193kg	
Packaging	100 x 80 x 80 + 35 x 70 x 161 cm	

# OTHER SWP PRODUCTS

## CONSUMABLES

Super 6 and Superon welding and brazing products for joining large fabrications and DIY use.

## WELDING MACHINES

As well as the impressive range of Stealth machines featured here, SWP also offer Redline Automotive and Proline Professional Mig machines.

## WELDER GENERATORS

Petrol and diesel, portable and static – all with a two-year warranty. Designed and manufactured by Genset in Italy.

## MIG WELDING

A comprehensive range of Compatible Torches, Consumables and Euro Conversion Kits.

## TIG WELDING

A wide range of Compatible Torches, Consumables, Cables, Handles, Connectors, Adaptors and Fittings.

## PLASMA CUTTING

Offering Compatible Torches, Consumables, Central Connectors, Circle Cutting Kits and Attachments.

## ARC WELDING ACCESSORIES

Electrode Holders, Clamps, Connectors and other accessories – plus Ovens and Quivers.

## ABRASIVES

Supplied by 3M and WinnerFlex, these Abrasives combine good quality with great value and European approval.

## GAS WELDING & CUTTING

For all you need from Regulators, Nozzles, Hoses and Fittings to Cutting Equipment.

## SAFETY & PPE

Welding Helmets and PAPR plus a comprehensive range of quality PPE and Workplace Protection.

## SUMNER TOOLS

For Pipe Stands Jacks, Heads and Clamps to cover most applications from the workshop to oil fields.

## STRONGHAND TOOLS

Including Tables, Pliers, Clamps, Magnetic Fit-Up Tools plus Markal Industrial Markers and Tempil Temperature Indicators.

## AIR EQUIPMENT

Compressors, Spray Kits & Accessories, Mighty Seven Heavy Duty and a budget range of Maintenance Tools.

## CORDLESS TOOLS

This range is particularly suited to the auto workshop. These heavy duty tools include LED Torches and Light Bars.

For further information, please visit **specialised  
welding.co.uk**



**Selected by  
Professionals**

**Head Office**

Unit 1, Farringdon Industrial Centre, Farringdon, Nr Alton, Hampshire GU34 3DD, UK

**National Distribution Depot**

Unit 1, Withins Point, Withins Road, Haydock Industrial Estate, Haydock WA11 9UD, UK

**Customer Service**

**T** +44 (0)1420 588180 | **F** +44 (0)1420 588184 | **E** [sales@swp.uk.net](mailto:sales@swp.uk.net)

**specialised  
welding.co.uk**