

Model Number
IHPA-1-12-E
IHPA-2-24-E
IHPA-3-36-E
IHPA-4-48-E



9" (229 mm) sealed round plate elements with easy to clean flat surface.



Large 5" (127 mm) stainless steel landing ledge for convenient plating.



Durable cast aluminum with a Valox™ heat protection grip.



IHPA-3-36-E shown

ROUND PLATE ELEMENTS - 2 KW round plate elements with easy-to-clean flat surface.

- Provides a solid flat surface for fast, even heating.
- Plates are 9" (229) diameter for maximum pan contact.
- Solid top prevents spills from entering unit making clean-up easy.
- Infinite heat controls for maximum cooking flexibility.

EXTERIOR FEATURES - Stainless steel front, top and sides for cleanability and professional look.

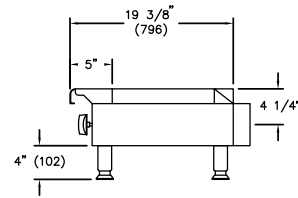
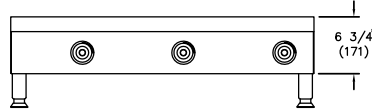
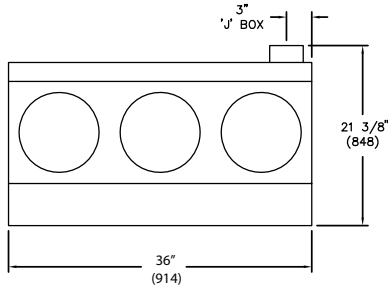
- Welded and polished stainless steel seams.
- Range Match profile when placed on a refrigerated base or equipment stand.
- Large 5" (127 mm) stainless steel landing ledge is ideal for plating.
- Control knobs are durable cast aluminum with a Valox™ "cool to the touch" grip.
- 4" (102 mm) heavy duty legs with adjustable feet.
- One year parts and labor warranty.





HOT PLATES 19-3/8" DEPTH ELECTRIC ROUND PLATES

IMPERIAL®



IHPA-3-36-E

ELECTRIC HOT PLATES - 19-3/8" (492 MM) DEPTH

| TOP | WIDTH | MODEL | ROUND ELEMENTS | TOTAL KW | SHIP WEIGHT (KG) | LBS |
|-----|---------------|-------------|----------------|----------|------------------|-----|
| | 12" (305 mm) | IHPA-1-12-E | 1 | 2 | (21) | 45 |
| | 24" (610 mm) | IHPA-2-24-E | 2 | 4 | (37) | 80 |
| | 36" (914 mm) | IHPA-3-36-E | 3 | 6 | (53) | 115 |
| | 48" (1219 mm) | IHPA-4-48-E | 4 | 8 | (64) | 140 |

Measurements in () are metric equivalents.

| ELECTRICAL REQUIREMENTS | | | | |
|-------------------------|-------------|-------|-----|------|
| MODEL | TOTAL KW | VOLTS | PH | AMPS |
| IHPA-1-12-E | 2 | 208 | 1 | 10 |
| | 2 | 240 | 1 | 8 |
| IHPA-2-24-E | 4 | 208 | 1 | 19 |
| | 4 | 208 | 3 | 14 |
| | 4 | 240 | 1 | 17 |
| | 4 | 240 | 3 | 13 |
| | 4 | 480* | 3 | 6 |
| IHPA-3-36-E | 6 | 208 | 1 | 29 |
| | 6 | 208 | 3 | 17 |
| | 6 | 240 | 1 | 25 |
| | 6 | 240 | 3 | 15 |
| | 6 | 480* | 3 | 7 |
| | IHPA-4-48-E | 8 | 208 | 1 |
| 8 | | 208 | 3 | 29 |
| 8 | | 240 | 1 | 33 |
| 8 | | 240 | 3 | 25 |
| 8 | | 480* | 3 | 13 |

* For export only, additional charge.

CLEARANCE REQUIREMENTS

For use only on non-combustible surfaces. Provide 0" clearance from non-combustible surfaces and 8" (203 mm) from combustible surfaces.

OPTIONS AND ACCESSORIES

- Stainless steel equipment stands
- 6" (152 mm) casters for equipment stands
- 480 volts (additional charge)

MODEL DIMENSIONS

| MODEL | DIMENSIONS |
|-------------|---|
| IHPA-1-12-E | 12" w x 19-3/8" d x 10-3/4" h (305 x 492 x 273 mm) |
| IHPA-2-24-E | 24" w x 19-3/8" d x 10-3/4" h (610 x 492 x 273 mm) |
| IHPA-3-36-E | 36" w x 19-3/8" d x 10-3/4" h (914 x 492 x 273 mm) |
| IHPA-4-48-E | 48" w x 19-3/8" d x 10-3/4" h (1219 x 492 x 273 mm) |

MODEL CRATED DIMENSIONS

| MODEL | CRATED DIMENSIONS |
|-------------|---|
| IHPA-1-12-E | 14-1/2" w x 23" d x 12" h (368 x 584 x 324 mm) |
| IHPA-2-24-E | 26-1/2" w x 23" d x 12" h (673 x 584 x 324 mm) |
| IHPA-3-36-E | 38-1/2" w x 23" d x 12" h (965 x 584 x 324 mm) |
| IHPA-4-48-E | 50-1/2" w x 23" d x 12" h (1283 x 584 x 324 mm) |



1128 Sherborn Street Corona, CA 92879
800.343.7790 Ph: 951.281.1830 Fx: 951.281.1879
www.imperialrange.com
E-mail: imperialsales@imperialrange.com