

A Healthcare Professional's Protocol Guide



 **Master
Supplements**

 **U.S. ENZYMES**

**TOMORROW'S
NUTRITION** 

Table of Contents

3 PRODUCT OVERVIEW

See where each product fits in our Master Philosophy.

4 PRODUCT BENEFITS

See where in the body each product works.

6 PROBIOTIC STRAIN SPECIFICATIONS

Detailed information on our primary probiotic strain choices.

8 ENZYME SPECIFICATIONS

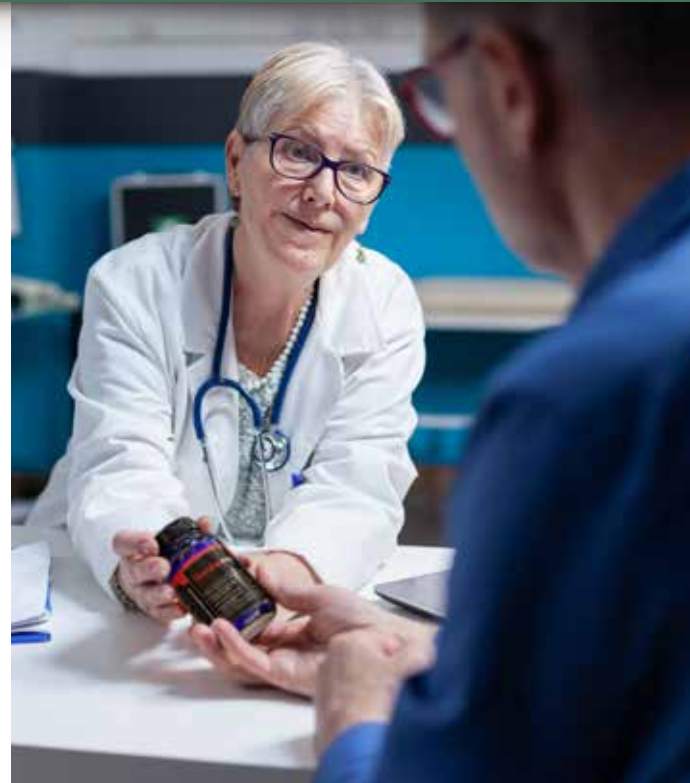
Detailed information on our enzymes.

10 SUGGESTED USE SUMMARY

All product usage recommendations in one place.

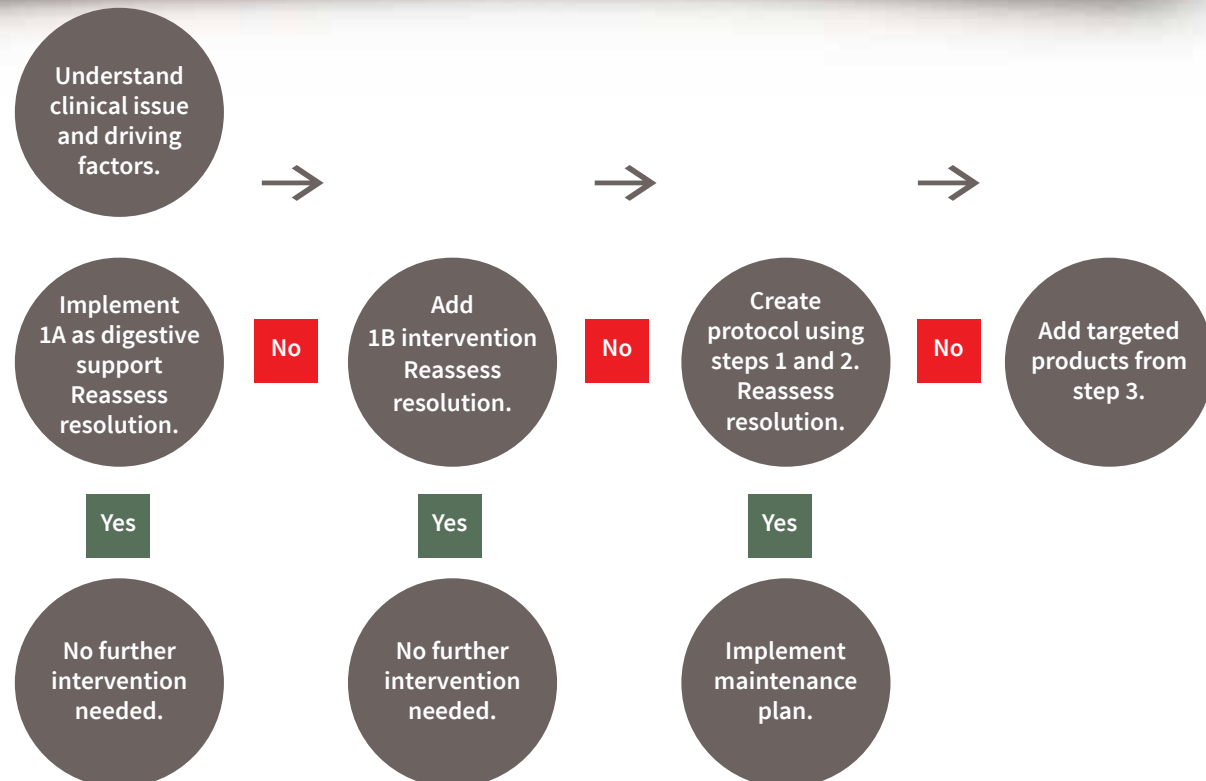
11 INFORMED SPORT CERTIFICATION

Several top-selling products are now tested for over 200 banned substances.



Master Philosophy Implementation Guide

Start here



MASTER SUPPLEMENTS, U.S. ENZYMES, AND TOMORROW'S NUTRITION PRO

Product Overview

This table represents our MASTER PHILOSOPHY and is intended to serve as a guide to help navigate our various formulas. We believe that supporting digestion and addressing dysbiosis are necessary first steps to create a foundation. Next we consider broad range systemic support for immune activation, stress reduction and detoxification.* When needed, we target specific systems of the body with focused support.*

STEP ONE: Create a Foundation		STEP TWO: Systemic Support	STEP THREE: Systemic Specificity
A: Support Digestion	B: Address Dysbiosis	Immune Activation Oxidative Stress Reduction Detoxification	Focused & Specific System Support
HCL-XYM™	TheralacPRO®	THERAXYM™	SEAXYM™
DIGESTXYM™	TruBifidoPRO®	YOUTHXYM™	SERRAXYM™
DIGESTXYM+™	TruFlora®	CHLORA-XYM™	NATTOXYM™
Enzalase®	BIOME-XYM™	TEAVIGO™	LUMBROXYM™
GLUTAXYM™	BETA-XYM™	D3-XYM™	GLUTAXYM™
	TruFiber®	IMMUNOXYM™	SUNTHEANINE™
	CLEANSXYM™	SULFORAXYM™	SUNBALANCE™
	SUNFIBER™	SUNSPECTRUM™	CRANXYM™
		PROTEINXYM(S)	ISOQUERCETIN

*These statements have not been evaluated by the Food and Drug Administration. These products are not intended to diagnose, treat, cure, or prevent any disease.

Product Benefits

These products have cross over benefits throughout the various systems of the body, the recommendations below are general guidelines. More detailed product information can be found in our company Product Guide.

1 DIGESTION: HCL-xym: pure source of betaine hydrochloride for protein digestion and upper G.I. support. **Digestxym** and **Digestxym+**: full macronutrient digestion with 23 different enzymes across multiple pH ranges. **Enzalase:** fat digestion with high lipase and patented deep-delivery for enzymatic action throughout the G.I. tract. **Glutaxym:** gluten digesting capacity. **Teavigo** blended into hot water daily as a tea supports digestive function. **Proteinxym:** variety of macro and micronutrients. **Nattoxym** and **Lumbroxym:** pancreatic support. **Sulforaxym, Cleansxym,** and **Youthxym:** support the liver's role in the digestive process.

2 G.I. SUPPORT: Theralac, TheralacPRO, and Granular Theralac: colonize the large and small intestine with a proven balance of probiotic strains and patented deep delivery + patented prebiotic activation. **TruBifido** and **TruBifidoPRO:** colonic support with all bifidobacteria formulas. **TruFlora:** helps with problematic yeast and small intestine microbial balance. **Biome-xym:** immense probiotic diversity. **Enzalase** and **Cleansxym** prep the G.I. tract with a cleansing action for optimal probiotic colonization. **Immunoxy**, **Chloraxym,** and **Proteinxym:** maintenance levels of probiotics and copious co-factors. **Beta-xym** and **Cranxym:** probiotic co-factors to help balance the gut microbiome. **SunFiber, SunSpectrum,** and **TruFiber:** soluble fiber prebiotic support.

3 CELLULAR HEALTH: Youthxym, IsoQuercetin, Teavigo, and Sulforaxym: powerful anti-oxidants to support cellular health. **Digestive Enzymes:** ensure undigested foods aren't leading to downstream systemic issues. **Systemic Enzymes:** indirect aid via immune support. **SunSpectrum** and **Chloraxym** support healthy metabolism. **SunBalance** promotes healthy mast cell function. **Gluta-xym** and **Proteinxym** support optimal energy levels.

4 MUSCULOSKELETAL SUPPORT: Serraxym: high amounts of serratiopeptidase to support healthy muscle, tendon, and joint function. **Theraxym:** 10 systemic enzyme blend for broader support. **Proteinxym:** post-workout support. **D3-xym** supports bone health with vitamin D3 + enzyme co-factors.

5 NERVOUS SYSTEM: Probiotics and Prebiotic Fibers: support the Gut/ Brain Axis. **Glutaxym** addresses certain negative dietary triggers and DPP-IV enzyme depletion. **SunBalance** supports healthy microglial cells and cognitive health. **SunTheanine:** adaptive amino acid that both improves focus and concentration while also helping with sleep and relaxation. **Systemic Enzymes:** promote healthy brain function with circulatory support.

6 ENDOCRINE SYSTEM: Sulforaxym: wide-ranging thyroid, NRF2 pathway, and hormonal support. **Chloraxym:** healthy detoxification. **Probiotics and Prebiotics** support the gut-endocrine connection and healthy hormone signaling. **Systemic**

Enzymes: support the TH2 immune response and hormone receptivity.

7 CARDIOVASCULAR SUPPORT: Lumbroxym and **Nattoxym:** targeted circulatory support. **Theraxym** and **IsoQuercetin** offer broader circulatory support. **Systemic Enzymes:** support healthy vasculature. **SunSpectrum** contains turmeric and coenzyme Q10 for heart support.

8 RESPIRATORY SYSTEM: Seaxym: supports healthy mucosal membranes. **Serraxym:** lung tissue support. **Probiotics:** promote a healthy cross-talk with the lung microbiome.

9 UROGENITAL SUPPORT: Cranxym and **Sulforaxym:** healthy kidney function. **Nattoxym** and **Lumbroxym:** supports healthy blood flow. **TruFlora** and other **Probiotics:** help with bacterial imbalances.

10 IMMUNE/LYMPHATIC SUPPORT: Systemic enzymes: ensure healthy immune system balance and lymphatic function. Certain **Probiotics** work more on the innate side of the immune system whereas others help on the TREG and TH2 or acquired side of the immune response. **Beta-xym** supports balanced immune system function. **IsoQuercetin, Cleansxym, Seaxym, D3-xym,** and **Sulforaxym** offer targeted support.

* These statements have not been evaluated by the Food and Drug Administration. These products are not intended to diagnose, treat, cure, or prevent any disease.

BENEFIT CODE ▶	1	2	3	4	5	6	7	8	9	10
Beta-xym™		■				■	■			■
Biome-xym™		■			■			■		■
Chloraxym		■	■			■				■
Cleansxym™		■						■		■
Cranxym	■	■					■		■	■
D3-xym™				■			■			■
Digestxym+™	■		■					■		■
Digestxym™	■		■					■		■
Enzalase®	■		■					■		■
Glutaxym™	■		■			■				■
Granular Theralac®		■			■	■		■		■
HCL-xym™	■									■
Hedron Products			■		■	■				
Immunoxy		■	■				■			■
IsoQuercetin		■	■	■			■			■
Lumbroxym™	■		■		■		■			■
Nattoxym™	■		■		■		■		■	■
Proteinxym(s)™	■	■	■	■	■		■			■
Seaxym™			■				■	■	■	■
Serraxym™			■	■	■		■	■		■
Sulforaxym	■		■		■	■			■	■
SunBalance			■		■	■		■	■	■
SunFiber®		■			■	■				
SunSpectrum		■	■		■	■	■			■
SunTheanine®					■	■				
Teavigo®	■		■			■	■		■	■
Theralac® & TheralacPRO®		■						■		■
Theraxym™			■	■			■	■	■	■
TruBifido® & TruBifidoPRO®		■						■	■	■
TruFiber®		■								
TruFlora®		■							■	■
Youthxym™	■		■				■			■

Probiotic Strain Specifications

Product	TheralacPRO							TruBifidoPRO					TruFlora		
STRAIN	NCFM (LA-1)	La-14	DDS-1	Lpc-37	NM97/09513	BL-04	Bi-07	BL-04	Bi-07	HN019	Bi-26	BB-06	IS-2	Ls-33	Lp-115
	<i>Lactobacillus acidophilus</i>	<i>Lactobacillus acidophilus</i>	<i>Lactobacillus acidophilus</i>	<i>Lacticaseibacillus paracasei</i>	<i>Lacticaseibacillus rhamnosus</i>	<i>Bifidobacterium lactis</i>	<i>Bifidobacterium lactis</i>	<i>Bifidobacterium lactis</i>	<i>Bifidobacterium lactis</i>	<i>Bifidobacterium lactis</i>	<i>Bifidobacterium infantis</i>	<i>Bifidobacterium bifidum</i>	<i>Bacillus coagulans</i>	<i>Lactobacillus salivarius</i>	<i>Lactobacillus plantarum</i>
ATCC Number/Deposit number	SD5221	SD5212		SD5275	SD5675	SD5219	SD5220	SD5219	SD5220	NM97/09513	SD6720		PTA-11748	SD5208	SD5209
Acid Tolerance (pH 3 for 1 hr at 37C)	++++ (>90%)	++++ (>90%)	++++	++++ (80-90%)	high	++++ (>90%)	++++ (>90%)	++++ (>90%)	++++ (>90%)	high			high	++++ (>70%)	++++ (>90%)
Bile salt tolerance (0.3%)	++++ (>90%)	++++ (>90%)	++++	+ (<60%)	high	++++ (>90%)	+++ (>90%)	++++ (>90%)	+++ (>90%)	high			high	++++ (>80%)	++++ (>90%)
Pepsin resistance (0.3% pH 2 for 1 hr)	+++ (>60%)	+++ (>60%)		+ (<60%)										+++ (>40%)	+++ (>40%)
Pancreatin resistance (0.1% pH 8 for 2 hr)	++++ (>60%)	+++ (>60%)		++++ (>60%)										++++ (>60%)	+++ (>60%)
Adherence HT-29	+++	++++	87-93%	+++	strong	+++	++	+++	++	strong				++++	++
Adherence Caco-2	+++	+++	excellent	++++	strong	+++	+++	+++	+++	strong				++++	++++
Adherence to Intestinal Mucosa		excellent*					positive		positive				positive		
Tumor Necrosis Factor (TNF)- α	up-regulate*	moderate*	down regulate	induces						sig. decrease					
Interferon (IF)- γ	up-regulate*	low*		induces											
Th-1 response	promotes	high*		promotes			promotes		promotes						high*
IL-10 expression	moderate	low*	upregulated	induces		stimulates*	moderate*	stimulates*	moderate*					stimulates*	moderate*
IL-12 expression	induces lower*	high*		induces higher*		some stimulation	higher*	some stimulation	higher*					some stimulation*	high*
Histamine production	unlikely	unlikely		unlikely	unlikely	unlikely	unlikely	unlikely	unlikely	unlikely	unlikely	unlikely		unlikely	unlikely
Tyramine production	unlikely	unlikely		unlikely	unlikely	unlikely	unlikely	unlikely	unlikely	unlikely	unlikely	unlikely		unlikely	unlikely
Oxalate degradation activity	positive	100%					100%		100%						40%
Mucin degradation					unable*					unable*					
NK cell function					increased					Increased*					
Transferable antibiotic resistance				no		no	no	no	no	no		no		no	no
Galacto-oligosaccharide utilization					positive										
Water Activity (from stability graphs)	0.107	0.121		0.017		0.077	0.037	0.077	0.037		<=0.15			0.005	0.020
L/D-lactic acid production Molar ratio	60/40	60/40	12/88	100/0		100/0	100/0	100/0	100/0	100/0			100/0	100/0	45/55
Amoxicillin	S	S	S	S		S	S	S	S				-	S	S
Ampicillin	S	S		S		S	S	S	S	S	S	S	-	S	S
Ceftazidime	I	I		R		S	S	S	S					R	R
Chloramphenicol	I	I	S	I		I	I	I	I	S		S	S	R	R
Ciprofloxacin	R	R		R		R	R	R	R				S	R	R
Clindamycin	I	I	S	S		I	I	I	I	S	S	S	I	S	S
Cloxacillin	S	S		S		S	S	S	S					R	R
Dicloxacillin	S	S		S		S	S	S	S					R	R
Doxycycline	-	-		-		-	-	-	-				S	-	-
Erythromycin	S	S	S	S		I	I	I	I	S	S	S	I	I	I
Gentamicin	R	R	S	R		R	R	R	R	S	S	S	I	R	R
Imipenem	R	R		R		R	R	R	R					R	R
Kanamycin	R	R	S	R		R	R	R	R	S	S		I	R	R
Neomycin	R	R		R		R	R	R	R					R	R
Nitrofurantoin	R	R		R		R	R	R	R					R	R
Penicillin G	S	S		S		S	S	S	S					S	R
Polymixin B	R	R		R		R	R	R	R					R	R
Rifampicin	I	S		S		S	S	S	S				S	R	S
Streptomycin	R	R	S	R		R	R	R	R	S	S	S	S	R	R
Sulfamethoxazole	R	R		R		R	R	R	R					R	R
Tetracycline	I	R	S	S		R	R	R	R	R	S	S	S	R	R
Trimethoprim	R	R		R		R	R	R	R					R	R
Vancomycin	S	S	S	R		S	S	S	S	S	S	S		R	R

S = Sensitive, R = Resistant, I = Intermediate

Enzyme Specifications

Enzyme	Units	Activity	Sourced	Product	Stability pH Range	Stability Temp. Range
Acid Stable Protease	ASPU	Protein digestion	<i>Aspergillus niger</i>	Digestxym; Digestxym+; Glutaxym	2.0-5.0	30-60C
Alpha Galactosidase	GALU	Carbohydrates	<i>Aspergillus niger</i>	Digestxym; Digestxym+; Enzalase	4.0-8.0	40-65C
Amylase (fungal)	SKB	Carbohydrates, Starch	<i>Aspergillus oryzae</i>	Digestxym; Digestxym+; Glutaxym; D3-xym; Enzalase	4.4-6.0	40-65C
Beta Glucanase	BGU	Carbohydrates	<i>Trichoderma longibrachiatum</i>	Digestxym; Digestxym+; Cleansxym; TruFlora	4.0-7.0	35-70C
Bromelain	FCC PU	Protein digestion	<i>Ananas comosus</i> stem	Digestxym; Digestxym+; Glutaxym; Theraxym; Enzalase	4.0-9.0	40-65C
Catalase	U	Free Radical digestion	<i>Aspergillus niger</i>	Digestxym; Digestxym+; Lumbroxym; Nattoxym; Seaxym; Serraxym; Theraxym; Youthxym	5.0-8.5	20-60C
Cellulase	CU	Carbohydrates	<i>Trichoderma longibrachiatum</i>	Digestxym; Digestxym+; Cleansxym; D3-xym; Enzalase; TruFiber	4.0-7.0	35-70C
Chitinase		Chitin digestion		Cleansxym		
Glucoamylase (Amyloglucosidase)	AG	Carbohydrates	<i>Aspergillus niger</i>	Digestxym; Digestxym+; Glutaxym; Enzalase	3.5-6.0	40-65C
Hemicellulase	HCU	Carbohydrates	<i>Aspergillus niger</i>	Digestxym; Digestxym+; Cleansxym; Enzalase; TruFlora; TruFiber	3.0-6.0	50-60C
Invertase	SU	Carbohydrates	<i>Saccharomyces cerevisiae</i>	Digestxym; Digestxym+; Glutaxym; D3-xym; Enzalase	2.5-5.5	up to 80C
Lactase	ALU	Carbohydrates	<i>Aspergillus oryzae</i>	Digestxym; Digestxym+; D3-xym; Enzalase	4.0-7.5	30-55C
Lipase I (fungal)	FIP	Fats	<i>Rhizopus oryzae</i>	Digestxym; Digestxym+; D3-xym; Enzalase	4.5-7.5	25-45C
Lipase II	FIP	Fats	<i>Aspergillus niger</i>	Digestxym; Digestxym+	3.0-7.0	30-55C
Lumbrokinase	FU	Protein digestion	Megadriles earthworm	Lumbroxym	6.0-10.0	up to 60C
Malt Diastase	DP	Carbohydrates	<i>Aspergillus oryzae</i>	Digestxym; Digestxym+; Glutaxym; D3-xym	4.4-6.0	40-65C
Nattokinase	FU	Fibrinolytic	<i>Bacillus subtilis</i>	Nattoxym; Theraxym	6.0-10.0	up to 60C
NSK-SD Nattokinase	FU	Fibrinolytic	<i>Bacillus subtilis natto</i>	Cranxym; Nattoxym	6.0-10.0	up to 60C
Papain	FCC PU	Protein digestion	<i>Carica papaya</i>	Digestxym; Digestxym+; Glutaxym; Theraxym; Enzalase	4.0-10.0	50-60C
Pectinase	Endo-PG	Carbohydrates	<i>Aspergillus niger</i>	Digestxym; Digestxym+; Enzalase; TruFiber	2.0-7.0	30-60C
Peptidase	HUT	Protein digestion	<i>Aspergillus oryzae</i>	Digestxym; Digestxym+; Theraxym	4.0-10.0	45-55C
Peptidase DPP-IV	DPP IV	Dietary gluten	<i>Aspergillus oryzae</i>	Glutaxym	5.0-8.0	40-65C
Peptidase S	LAPU	Protein digestion	<i>Aspergillus melleus</i>	Digestxym; Digestxym+; Glutaxym; Theraxym	5.5-10.0	30-55C
Phytase	PU	Carbohydrates	<i>Aspergillus niger</i>	Digestxym; Digestxym+	3.0-6.5	40-60C
Protease I (fungal)	HUT	Protein digestion	<i>Aspergillus oryzae</i>	Digestxym; Digestxym+; Glutaxym; Cleansxym; D3-xym; Theraxym; Enzalase	4.0-10.0	45-60C
Protease II (Neutral Bacterial)	PC	Protein digestion	<i>Bacillus subtilis</i>	Digestxym; Digestxym+; Glutaxym; Theraxym	5.5-9.0	30-70C
Protease III (alkaline)	PC	Protein digestion	<i>Bacillus licheniformis</i>	Digestxym; Digestxym+; Glutaxym; Theraxym	7.0-10.0	25-70C
Seaprose S crystalline	U	Protein digestion	<i>Aspergillus melleus</i>	Seaxym; Theraxym	5.0-9.0	35-50C
Serratiopeptidase	U	Protein digestion	<i>Serratia marcescens</i>	Serraxym; Theraxym		30-50C
Superoxide dismutase	IU	Anti-oxidizing	Melon	Youthxym		
Superoxide dismutase (fermented)	U	Anti-oxidizing	<i>Bacillus amyloliquefaciens</i>	Youthxym		
Xylanase	XU	Carbohydrates	<i>Trichoderma longibrachiatum</i>	Digestxym; Digestxym+; Cleansxym	4.0-7.0	45-55C

Suggested Use Summary

Item, Quantity	
PROFESSIONAL PRODUCTS	
Beta-Xym (31 Veg caps)	Take 1 capsule daily. Can be taken with or without food, any time of day.
Biome-xym (62 DR caps)	Take 2 capsules on an empty stomach at bedtime with 8 ounces of water. Separate by 3 hours when taking with antibiotics.
Chlora-xym (62 NP Caps)	Take 1 capsule twice a day with meals and a glass of water.
Cleansxym (62 DR Caps)	Take 1 capsule twice a day with meals. If needed, take 2 capsules two times per day with meals.
Cranxym (62 Veg Caps)	Take 2 capsules daily. Can be taken with or without food, any time of day.
D3-xym (124 Veg Caps)	Take 1 capsule once a day with a meal and 8 ounces of water.
Digestxym (93 Veg Caps)	Take 1 capsule with a glass of water at the beginning of each meal.
Digestxym+ (93 Veg Caps)	Take 1 capsule with a glass of water at the beginning of each meal.
Glutaxym (31 Veg Caps)	Take 1 capsule with a glass of water at the beginning of each meal.
HCL-xym (93 Veg Caps)	Take 1 capsule after each meal. If needed, take 2 capsules after a heavy meal or a meal rich in proteins.
ImmunoXym (62 DR Caps)	Take 2 capsules daily. Can be taken with or without food, any time of day.
Iso-Quercetin (62 Veg caps)	Take 2 capsules daily. Can be taken with or without food, any time of day.
Lumbroxym (62 DR caps)	Take 1 capsule with a glass of water on an empty stomach 2 hours before or after a meal.
Nattoxym (93 DR Caps)	Take 1 capsule with a glass of water on an empty stomach 2 hours before or after a meal.
Proteinxym Chocolate (31 Servings)	Add 1 scoop (28 grams) to water or your favorite beverage and stir completely.
Proteinxym Vanilla (31 Servings)	Add 1 scoop (26 grams) to water or your favorite beverage and stir completely.
Seaxym (93 DR Caps)	Take 1 capsule with a glass of water on an empty stomach 2 hours before or after a meal.
Serraxym (93 DR Caps)	Take 1 capsule with a glass of water on an empty stomach 2 hours before or after a meal.
SulforaXYM (62 Veg Caps)	Take 2 capsules daily. Can be taken with or without food, any time of day.
SunBalance (93 Veg Caps)	Take 3 capsules daily. Can be taken with or without food, any time of day.
SunFiber (31 Servings)	Mix 1 scoop (7g) into 8-12 ounces of water or any non-carbonated beverage. Can be taken with or without food, any time of day.
SunSpectrum (31 Servings)	Mix 1 scoop (7g) into 8-12 ounces of water or any non-carbonated beverage. Can be taken with or without food, any time of day.
SunTheanine (62 Veg Caps)	Take 1 capsule once or twice daily. Can be taken with or without food, any time of day.
Teavigo (62 Veg Caps)	Take 1 capsule once or twice daily. Can be taken with or without food, any time of day.
TheracPRO Bottle (31 Veg Caps)	Take 1 or 2 capsules daily. Separate by 3 hours when taking with antibiotics.
Theraxym (93 DR Caps)	Take 1 capsule with a glass of water on an empty stomach 2 hours before or after a meal.
TruBifidoPRO Bottle (31 DR Caps)	Take 1 or 2 capsules daily. Separate by 3 hours when taking with antibiotics.
Youthxym (62 DR Caps)	Take 1 capsule on an empty stomach 2 hours before or after a meal.
RETAIL PRODUCTS	
Enzylase Bottle (50 Veg Caps)	Take 1 capsule with water at the start of a meal. For systemic use, take 1 capsule a day on an empty stomach.
Granular Theracac Bottle (40 servings)	Fold or gently stir a ¼ teaspoon into any soft food or beverage. Separate by 3 hours when taking with antibiotics.
Theracac Bottle (30 Veg Caps)	Take 1 or 2 capsules daily. Separate by 3 hours when taking with antibiotics.
TruBifido Bottle (30 DR Caps)	Take 1 or 2 capsules daily. Separate by 3 hours when taking with antibiotics.
TruFiber Bottle (50 Servings)	Mix 1 scoop into 8-12 ounces of a non-carbonated beverage. Additional mixing may be needed depending on beverage type and temperature.
TruFlora Bottle (32 Veg Caps)	Take 1 or 2 capsules daily. Separate by 3 hours when taking with antibiotics.

You are now informed:
Trust these products.



Informed Sport is a global testing and supplement certification program which provides assurance to athletes that products carrying the Informed Sport mark have been tested for prohibited substances and manufactured to high-quality standards. Informed Sport tests every single batch of a product before it's released to market. After certification, we continually blind test to further ensure the integrity and safety of the product.



All products and brands available at usenzymes.com 800 926-2961 orders@mastersupplementsinc.com

RAISING THE STANDARD.

Probiotics | Enzymes | Fiber

To access all brands and products,
healthcare professionals can register
and order at **usenzymes.com**



800-926-2961 master-supplements.com

1600 Arboretum Blvd. Suite 202, Victoria, MN 55386

info@mastersupplementsinc.com

Like us on   

*These statements have not been evaluated by the Food and Drug Administration. These products are not intended to diagnose, treat, cure, or prevent any disease.