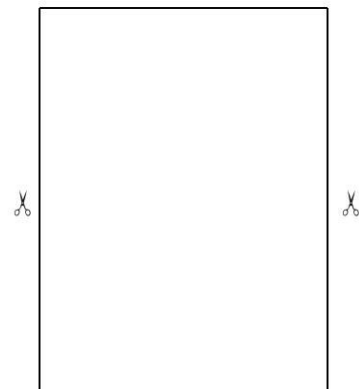
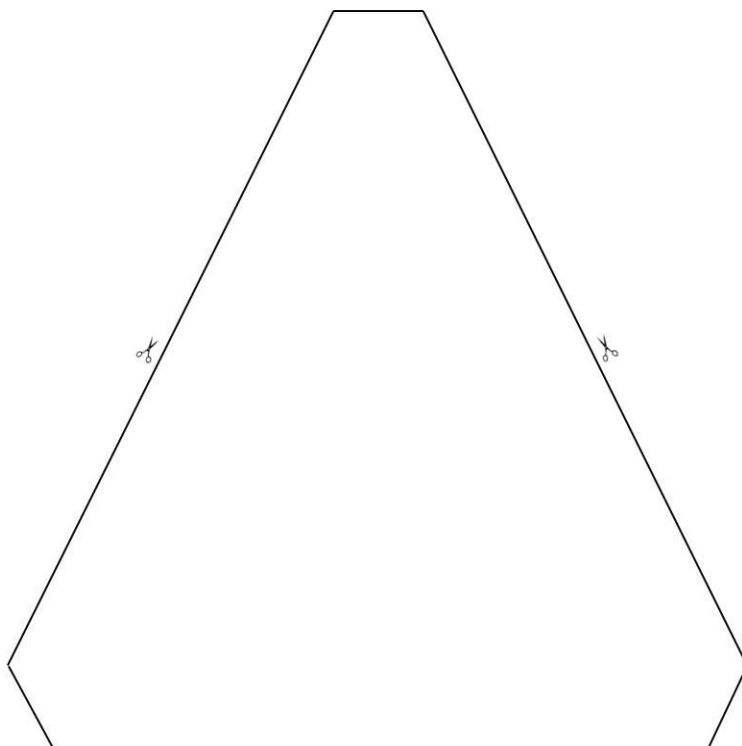
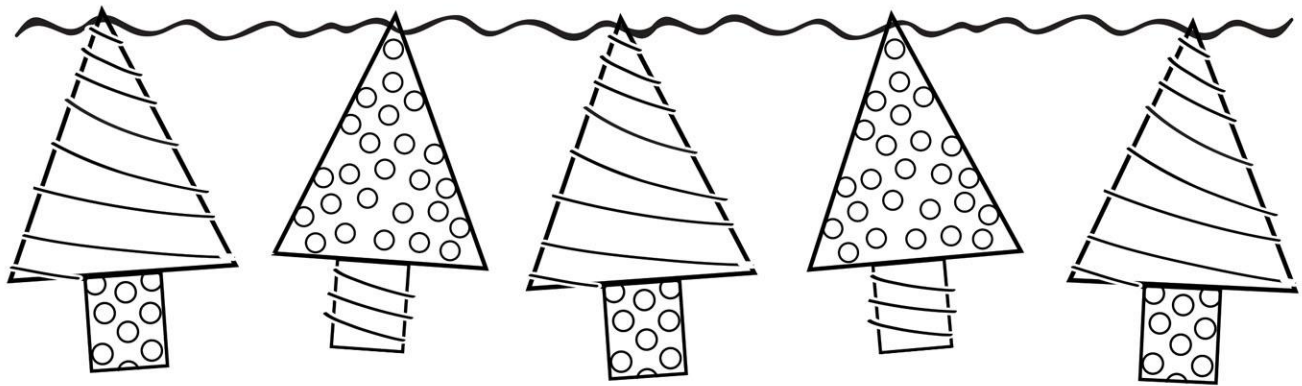


Christmas Tree Garland Pattern

Supplies Needed:

4 Different Fabric Prints, Ribbon or very thin cording, Polyfilament stuffing, Universal Needle, All Purpose Polyester Thread, Tracing Tool, Rotary Blade and Mat or Scissors and an Iron



Christmas Tree Garland Pattern

Step: Layer your fabric and use the provided template to trace your tree and tree trunk. Cut out as many patterns as you'd like. Each tree consists of a tree body (2 pieces) and a tree trunk (2 pieces).

Step 2: Unwind your ribbon and mark evenly spaced "points" along the length. The tree body will hang from these points so I spaced them about 18 inches apart. In this video, my ribbon is cut for demonstration purposes. If you do not wish to make a garland, you can make tree ornaments using just a cut piece of ribbon and the provided template.

Step 3: Place the 2 tree body pieces right-sides together. Fold your ribbon along the marked point and slide it in between the tree body pieces. Attach the ribbon to the tree body by sewing a 1/4 inch seam at the tree's top.

*Pro Tip: Pay special attention to how your ribbon is folded and placed between the tree pieces. The ribbon can easily become twisted.

Step 4: Sew the tree body pieces together using a 1/4 inch seam. Leave a 1 inch opening at the center base of the tree. The tree trunk is also sewn using a 1/4 inch seam. Leave the top of the trunk unsewn.

Step 5: Turn the tree and the trunk right-sides out. Make sure to really work those corners. Press with your iron.

Step 6: Lightly stuff the tree body and the tree trunk with polyester stuffing.

Step 7: Insert the unsewn top of your tree trunk into the open base of the tree body. Insert the trunk into the tree about 1/4 to 3/8 an inch - or however much you feel looks best.

Step 8: Attach the trunk to the tree base using a narrow edge stitch.

That's all there is to it. Using an "assembly line" method, each tree piece (body and trunk) takes approximately 5 minutes to construct.