

ACART



Specification Guide

Stainless Steel Casework

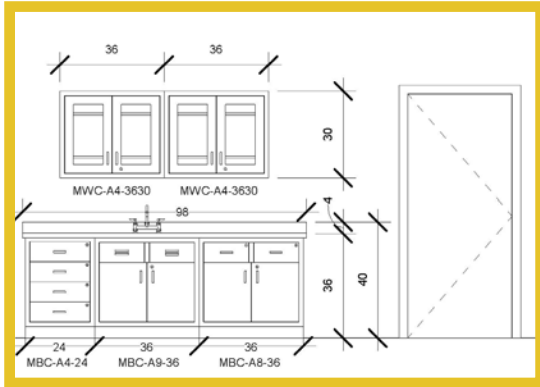
Table of Contents

From Concept To Completion	3	Operating Room Cabinets	18
Wall Cabinets	5	Table Accessory Cabinets	19
Single Solid Door	5	Equipment Supply Cabinets	19
Single Glass Door	5	Desk Cabinets	20
Dual Solid Doors	6	Miscellaneous Supply Cabinets	20
Dual Glass Doors	7	Custom Features for OR Cabinets	20
No Doors	8	Operating Room Bases (12" High)	21
Dual Sliding Glass Doors	9	Corner Guards	21
Custom Features for Wall Cabinets	9	Counter Tops	21
Base Cabinets	10	Sloping Tops	22
Single Solid Door	10	Wall Shelves	23
Single Solid Door, Single Drawer	10		
Single Solid Door, Sink Cabinet	11		
4 Drawers	11		
3 Drawers	12		
No Doors	12		
Dual Solid Doors	13		
Dual Solid Doors, Dual Drawers	13		
Dual Solid Doors, Sink Cabinet	14		
Dual Solid Doors, Single Drawer	14		
Custom Features for Base Cabinets	14		
High Cabinets	15		
Single Solid Door	15		
Single Glass Door	15		
Dual Solid Doors	16		
Dual Glass Doors	16		
Dual Sliding Solid Doors	17		
Dual Sliding Glass Doors	17		
Custom Features for High Cabinet	17		



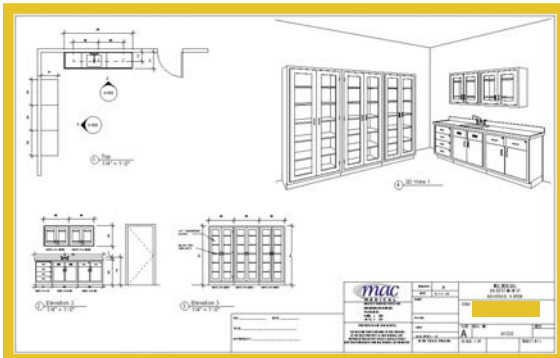
STAINLESS STEEL CASE WORK

From Concept To Completion



1 Plan

Acart's experienced team of engineers can help conceptualize and plan a solution for your casework needs. Whether those needs are simply one cabinet or a complex build-out, we pride ourselves on helping you find a solution that works best for your facility. We will start with a proof of concept, and will revise your drawings until they meet your requirements.



2 Build

Once the engineering drawings have been finalized and approved, your casework project starts to come to life. After your project has been built, Acart makes sure your product passes rigorous quality and standards check list prior to shipment.



3 Install

When your casework arrives at its destination, Acart ensures installation happens smoothly and timely. We communicate with the contractors/installers to ensure your product is installed according to your specifications. In short, Acart stays involved from concept to completion.



Acart's full line of stainless steel Wall Cabinets, Base Cabinets, and High Cabinets can be configured in a number of ways to create the arrangement your facility needs. Choose from solid doors, glass doors, sliding doors, or no doors. Many optional features are available including cam locks, tee handles, electronic keypad door lock, and sloping tops, to name a few.

STANDARD FEATURES

- Magnetic door catches with a quiet close
- Seamless front face on all cabinets
- Revit files & spec sheets available
- Fully welded construction
- Type 300 series stainless steel
- Stainless steel shelves (where applicable shelves adjust in 1-1/2" increments)
- 4" standard pull handle (excludes sliding doors)
- 3/16" tempered glass (where applicable)
- Adjustable feet on Base Cabinets & High Cabinets

Wall Cabinets - Single Solid Door

MODEL #	DIMENSIONS (W x H x D inches)	SHELVES
MWC-A1-1818	18 x 18 x 13	1
MWC-A1-1824	18 x 24 x 13	1
MWC-A1-1830	18 x 30 x 13	2
MWC-A1-1836	18 x 36 x 13	2
MWC-A1-1848	18 x 48 x 13	3
MWC-A1-2418	24 x 18 x 13	1
MWC-A1-2424	24 x 24 x 13	1
MWC-A1-2430	24 x 30 x 13	2
MWC-A1-2436	24 x 36 x 13	2
MWC-A1-2448	24 x 48 x 13	3

Note: Additional sizes available for specific requirements; please contact us for further assistance
 Note: Additional shelving available for purchase

OPTIONAL FEATURES

- Cam lock
- Tee handle
- Tee handle with key lock
- Electronic keypad door lock
- Right or left hinge
- Pegboard back
- Sloping top



MWC-A1-2430



MWC-A2-2430

OPTIONAL FEATURES

- Cam lock
- Tee handle
- Tee handle with key lock
- Electronic keypad door lock
- Right or left hinge
- Pegboard back
- Sloping top

Wall Cabinets - Single Glass Door

MODEL #	DIMENSIONS (W x H x D inches)	SHELVES
MWC-A2-1818	18 x 18 x 13	1
MWC-A2-1824	18 x 24 x 13	1
MWC-A2-1830	18 x 30 x 13	2
MWC-A2-1836	18 x 36 x 13	2
MWC-A2-1848	18 x 48 x 13	3
MWC-A2-2418	24 x 18 x 13	1
MWC-A2-2424	24 x 24 x 13	1
MWC-A2-2430	24 x 30 x 13	2
MWC-A2-2436	24 x 36 x 13	2
MWC-A2-2448	24 x 48 x 13	3

Note: Additional sizes available for specific requirements; please contact us for further assistance
 Note: Additional shelving available for purchase



MWC-A3-3630

Shown with optional cam lock

Wall Cabinets - Dual Solid Doors

MODEL #	DIMENSIONS (W x H x D inches)	SHELVES
MWC-A3-3018	30 x 18 x 13	1
MWC-A3-3024	30 x 24 x 13	1
MWC-A3-3030	30 x 30 x 13	2
MWC-A3-3036	30 x 36 x 13	2
MWC-A3-3048	30 x 48 x 13	3
MWC-A3-3618	36 x 18 x 13	1
MWC-A3-3624	36 x 24 x 13	1
MWC-A3-3630	36 x 30 x 13	2
MWC-A3-3636	36 x 36 x 13	2
MWC-A3-3648	36 x 48 x 13	3
MWC-A3-4218	42 x 18 x 13	1
MWC-A3-4224	42 x 24 x 13	1
MWC-A3-4230	42 x 30 x 13	2
MWC-A3-4236	42 x 36 x 13	2
MWC-A3-4248	42 x 48 x 13	3
MWC-A3-4818	48 x 18 x 13	1
MWC-A3-4824	48 x 24 x 13	1
MWC-A3-4830	48 x 30 x 13	2
MWC-A3-4836	48 x 36 x 13	2
MWC-A3-4848	48 x 48 x 13	3

OPTIONAL FEATURES

- Cam lock
- Tee handle
- Tee handle with key lock
- Electronic keypad door lock
- Pegboard back
- Sloping top

Note: Additional sizes available for specific requirements; please contact us for further assistance

Note: Additional shelving available for purchase

Wall Cabinets - Dual Glass Doors

MODEL #	DIMENSIONS (W x H x D inches)	SHELVES
MWC-A4-3018	30 x 18 x 13	1
MWC-A4-3024	30 x 24 x 13	1
MWC-A4-3030	30 x 30 x 13	2
MWC-A4-3036	30 x 36 x 13	2
MWC-A4-3048	30 x 48 x 13	3
MWC-A4-3618	36 x 18 x 13	1
MWC-A4-3624	36 x 24 x 13	1
MWC-A4-3630	36 x 30 x 13	2
MWC-A4-3636	36 x 36 x 13	2
MWC-A4-3648	36 x 48 x 13	3
MWC-A4-4218	42 x 18 x 13	1
MWC-A4-4224	42 x 24 x 13	1
MWC-A4-4230	42 x 30 x 13	2
MWC-A4-4236	42 x 36 x 13	2
MWC-A4-4248	42 x 48 x 13	3
MWC-A4-4818	48 x 18 x 13	1
MWC-A4-4824	48 x 24 x 13	1
MWC-A4-4830	48 x 30 x 13	2
MWC-A4-4836	48 x 36 x 13	2
MWC-A4-4848	48 x 48 x 13	3

OPTIONAL FEATURES

- Cam lock
- Tee handle
- Tee handle with key lock
- Electronic keypad door lock
- Pegboard back
- Sloping top

Note: Additional sizes available for specific requirements; please contact us for further assistance
Note: Additional shelving available for purchase



MWC-A4-3630

Shown with optional cam lock



MWC-A5-3630

Wall Cabinets - No Doors

MODEL #	DIMENSIONS (W x H x D inches)	SHELVES
MWC-A5-3018	30 x 18 x 13	1
MWC-A5-3024	30 x 24 x 13	1
MWC-A5-3030	30 x 30 x 13	2
MWC-A5-3036	30 x 36 x 13	2
MWC-A5-3048	30 x 48 x 13	3
MWC-A5-3618	36 x 18 x 13	1
MWC-A5-3624	36 x 24 x 13	1
MWC-A5-3630	36 x 30 x 13	2
MWC-A5-3636	36 x 36 x 13	2
MWC-A5-3648	36 x 48 x 13	3
MWC-A5-4218	42 x 18 x 13	1
MWC-A5-4224	42 x 24 x 13	1
MWC-A5-4230	42 x 30 x 13	2
MWC-A5-4236	42 x 36 x 13	2
MWC-A5-4248	42 x 48 x 13	3
MWC-A5-4818	48 x 18 x 13	1
MWC-A5-4824	48 x 24 x 13	1
MWC-A5-4830	48 x 30 x 13	2
MWC-A5-4836	48 x 36 x 13	2
MWC-A5-4848	48 x 48 x 13	3

OPTIONAL FEATURES

- Pegboard back
- Sloping top

Note: Additional sizes available for specific requirements; please contact us for further assistance

Note: Additional shelving available for purchase

Wall Cabinets - Dual Sliding Glass Doors

MODEL #	DIMENSIONS (W x H x D inches)	SHELVES
MWC-A6-3018	30 x 18 x 13	1
MWC-A6-3024	30 x 24 x 13	1
MWC-A6-3030	30 x 30 x 13	2
MWC-A6-3036	30 x 36 x 13	2
MWC-A6-3048	30 x 48 x 13	3
MWC-A6-3618	36 x 18 x 13	1
MWC-A6-3624	36 x 24 x 13	1
MWC-A6-3630	36 x 30 x 13	2
MWC-A6-3636	36 x 36 x 13	2
MWC-A6-3648	36 x 48 x 13	3
MWC-A6-4218	42 x 18 x 13	1
MWC-A6-4224	42 x 24 x 13	1
MWC-A6-4230	42 x 30 x 13	2
MWC-A6-4236	42 x 36 x 13	2
MWC-A6-4248	42 x 48 x 13	3
MWC-A6-4818	48 x 18 x 13	1
MWC-A6-4824	48 x 24 x 13	1
MWC-A6-4830	48 x 30 x 13	2
MWC-A6-4836	48 x 36 x 13	2
MWC-A6-4848	48 x 48 x 13	3

OPTIONAL FEATURES

- Cam lock
- Pegboard back
- Sloping top



MWC-A6-3630

Note: Additional sizes available for specific requirements; please contact us for further assistance
 Note: Additional shelving available for purchase

Ask about these custom features for our Wall Cabinets:

- Pass through construction with optional interlock
- Lead lined construction
- Divider shelves
- Cabinet fillers
- LED lighting (installation required)



MBC-A1-24

Base Cabinets - Single Solid Door

MODEL #	DIMENSIONS (W x H x D inches)	SHELVES
MBC-A1-15	15 x 34.5 x 22	1
MBC-A1-18	18 x 34.5 x 22	1
MBC-A1-21	21 x 34.5 x 22	1
MBC-A1-24	24 x 34.5 x 22	1

Note: Additional sizes available for specific requirements; please contact us for further assistance
Note: Additional shelving available for purchase

OPTIONAL FEATURES

- Cam lock
- Tee handle
- Tee handle with key lock
- Electronic keypad door lock
- Right or left hinge
- Variable height base

Base Cabinets - Single Solid Door, Single Drawer

MODEL #	DIMENSIONS (W x H x D inches)	SHELVES
MBC-A2-15	15 x 34.5 x 22	1
MBC-A2-18	18 x 34.5 x 22	1
MBC-A2-21	21 x 34.5 x 22	1
MBC-A2-24	24 x 34.5 x 22	1

Note: Additional sizes available for specific requirements; please contact us for further assistance
Note: Additional shelving available for purchase

OPTIONAL FEATURES

- Cam lock
- Tee handle
- Tee handle with key lock
- Electronic keypad door lock
- Right or left hinge
- Variable height base



MBC-A2-24

OPTIONAL FEATURES

- Cam lock
- Tee handle
- Tee handle with key lock
- Electronic keypad door lock
- Right or left hinge
- Variable height base



MBC-A3-24

Base Cabinets - Single Solid Door, Sink Cabinet

MODEL #	DIMENSIONS (W x H x D inches)	SHELVES
MBC-A3-15	15 x 34.5 x 22	0
MBC-A3-18	18 x 34.5 x 22	0
MBC-A3-21	21 x 34.5 x 22	0
MBC-A3-24	24 x 34.5 x 22	0

Note: Additional sizes available for specific requirements; please contact us for further assistance

Base Cabinets - 4 Drawers

MODEL #	DIMENSIONS (W x H x D inches)	SHELVES
MBC-A4-15	15 x 34.5 x 22	0
MBC-A4-18	18 x 34.5 x 22	0
MBC-A4-21	21 x 34.5 x 22	0
MBC-A4-24	24 x 34.5 x 22	0

Note: Additional sizes available for specific requirements; please contact us for further assistance

OPTIONAL FEATURES

- Cam lock
- Variable height base



MBC-A4-24

Base Cabinets - 3 Drawers

MODEL #	DIMENSIONS (W x H x D inches)	SHELVES
MBC-A5-15	15 x 34.5 x 22	0
MBC-A5-18	18 x 34.5 x 22	0
MBC-A5-21	21 x 34.5 x 22	0

Note: Additional sizes available for specific requirements; please contact us for further assistance

OPTIONAL FEATURES

- Cam lock
- Variable height base



MBC-A5-24



MBC-A6-24

Base Cabinets - No Doors

MODEL #	DIMENSIONS (W x H x D inches)	SHELVES
MBC-A6-15	15 x 34.5 x 22	2
MBC-A6-18	18 x 34.5 x 22	2
MBC-A6-21	21 x 34.5 x 22	2
MBC-A6-24	24 x 34.5 x 22	2
MBC-A6-30	30 x 34.5 x 22	2
MBC-A6-36	36 x 34.5 x 22	2
MBC-A6-42	42 x 34.5 x 22	2
MBC-A6-48	48 x 34.5 x 22	2

Note: Additional sizes available for specific requirements; please contact us for further assistance

Note: Additional shelving available for purchase

OPTIONAL FEATURES

- Variable height base

OPTIONAL FEATURES

- Cam lock
- Tee handle
- Tee handle with key lock
- Electronic keypad door lock
- Variable height base



MBC-A7-36

Base Cabinets - Dual Solid Doors

MODEL #	DIMENSIONS (W x H x D inches)	SHELVES
MBC-A7-15	30 x 34.5 x 22	1
MBC-A7-18	36 x 34.5 x 22	1
MBC-A7-21	42 x 34.5 x 22	1
MBC-A7-24	48 x 34.5 x 22	1

Note: Additional sizes available for specific requirements; please contact us for further assistance
Note: Additional shelving available for purchase

Base Cabinets - Dual Solid Doors, Dual Drawers

MODEL #	DIMENSIONS (W x H x D inches)	SHELVES
MBC-A8-15	30 x 34.5 x 22	1
MBC-A8-18	36 x 34.5 x 22	1
MBC-A8-21	42 x 34.5 x 22	1
MBC-A8-24	48 x 34.5 x 22	1

Note: Additional sizes available for specific requirements; please contact us for further assistance
Note: Additional shelving available for purchase



MBC-A8-36

OPTIONAL FEATURES

- Cam lock
- Tee handle
- Tee handle with key lock
- Electronic keypad door lock
- Variable height base

OPTIONAL FEATURES

- Cam lock
- Tee handle
- Tee handle with key lock
- Electronic keypad door lock
- Variable height base

Base Cabinets - Dual Solid Doors, Sink Cabinet

MODEL #	DIMENSIONS (W x H x D inches)	SHELVES
MBC-A9-15	30 x 34.5 x 22	0
MBC-A9-18	36 x 34.5 x 22	0
MBC-A9-21	42 x 34.5 x 22	0
MBC-A9-24	48 x 34.5 x 22	0

Note: Additional sizes available for specific requirements; please contact us for further assistance



MBC-A10-36



MBC-A9-36

Base Cabinets - Dual Solid Doors, Single Drawer

MODEL #	DIMENSIONS (W x H x D inches)	SHELVES
MBC-A10-15	30 x 34.5 x 22	1
MBC-A10-18	36 x 34.5 x 22	1
MBC-A10-21	42 x 34.5 x 22	1
MBC-A10-24	48 x 34.5 x 22	1

Note: Additional sizes available for specific requirements; please contact us for further assistance

Note: Additional shelving available for purchase

OPTIONAL FEATURES

- Cam lock
- Tee handle
- Tee handle with key lock
- Electronic keypad door lock
- Variable height base

Ask about these custom features for our Base Cabinets:

- Pull out writing surface
- Pull out drawers
- Drawer dividers
- Pull out baskets
- Vented doors
- Divider shelves
- Cabinet fillers
- Trim kits
- LED lighting (installation required)



MHC-A1-2418

High Cabinets - Single Solid Door

MODEL #	DIMENSIONS (W x H x D inches)	SHELVES
MHC-A1-1818	18 x 84 x 18	5
MHC-A1-1824	18 x 84 x 24	5
MHC-A1-2418	24 x 84 x 18	5
MHC-A1-2424	24 x 84 x 24	5

Note: Additional sizes available for specific requirements; please contact us for further assistance
Note: Additional shelving available for purchase

OPTIONAL FEATURES

- Recessed (80" height)
- Cam lock
- Tee handle
- Tee handle with key lock
- Electronic keypad door lock
- Right or left hinge
- Pegboard back
- Variable height base
- Sloping top



MHC-A2-2418

OPTIONAL FEATURES

- Recessed (80" height)
- Cam lock
- Tee handle
- Tee handle with key lock
- Electronic keypad door lock
- Right or left hinge
- Pegboard back
- Variable height base
- Sloping top

High Cabinets - Single Glass Door

MODEL #	DIMENSIONS (W x H x D inches)	SHELVES
MHC-A2-1818	18 x 84 x 18	5
MHC-A2-1824	18 x 84 x 24	5
MHC-A2-2418	24 x 84 x 18	5
MHC-A2-2424	24 x 84 x 24	5

Note: Additional sizes available for specific requirements; please contact us for further assistance
Note: Additional shelving available for purchase



MHC-A3-3618

OPTIONAL FEATURES

- Recessed (80" height)
- Cam lock
- Tee handle
- Tee handle with key lock
- Electronic keypad door lock
- Pegboard back
- Variable height base
- Sloping top

High Cabinets - Dual Solid Doors

MODEL #	DIMENSIONS (W x H x D inches)	SHELVES
MHC-A3-3018	30 x 84 x 18	5
MHC-A3-3024	30 x 84 x 24	5
MHC-A3-3618	36 x 84 x 18	5
MHC-A3-3624	36 x 84 x 24	5
MHC-A3-4218	42 x 84 x 18	5
MHC-A3-4224	42 x 84 x 24	5
MHC-A3-4818	48 x 84 x 18	5
MHC-A3-4824	48 x 84 x 24	5

Note: Additional sizes available for specific requirements; please contact us for further assistance
Note: Additional shelving available for purchase



MHC-A4-3618

High Cabinets - Dual Glass Doors

MODEL #	DIMENSIONS (W x H x D inches)	SHELVES
MHC-A4-3018	30 x 84 x 18	5
MHC-A4-3024	30 x 84 x 24	5
MHC-A4-3618	36 x 84 x 18	5
MHC-A4-3624	36 x 84 x 24	5
MHC-A4-4218	42 x 84 x 18	5
MHC-A4-4224	42 x 84 x 24	5
MHC-A4-4818	48 x 84 x 18	5
MHC-A4-4824	48 x 84 x 24	5

Note: Additional sizes available for specific requirements; please contact us for further assistance
Note: Additional shelving available for purchase

OPTIONAL FEATURES

- Recessed (80" height)
- Cam lock
- Tee handle
- Tee handle with key lock
- Electronic keypad door lock
- Pegboard back
- Variable height base
- Sloping top

High Cabinets - Dual Sliding Doors

MODEL #	DIMENSIONS (W x H x D inches)	SHELVES
MHC-A5-3018	30 x 84 x 18	5
MHC-A5-3024	30 x 84 x 24	5
MHC-A5-3618	36 x 84 x 18	5
MHC-A5-3624	36 x 84 x 24	5
MHC-A5-4218	42 x 84 x 18	5
MHC-A5-4224	42 x 84 x 24	5
MHC-A5-4818	48 x 84 x 18	5
MHC-A5-4824	48 x 84 x 24	5

OPTIONAL FEATURES

- Recessed (80" height)
- Cam lock
- Pegboard back
- Variable height base
- Sloping top

Note: Additional sizes available for specific requirements; please contact us for further assistance

Note: Additional shelving available for purchase



MHC-A5-3618



MHC-A6-3618

High Cabinets - Dual Sliding Glass Doors

OPTIONAL FEATURES

- Recessed (80" height)
- Cam lock
- Pegboard back
- Variable height base
- Sloping top

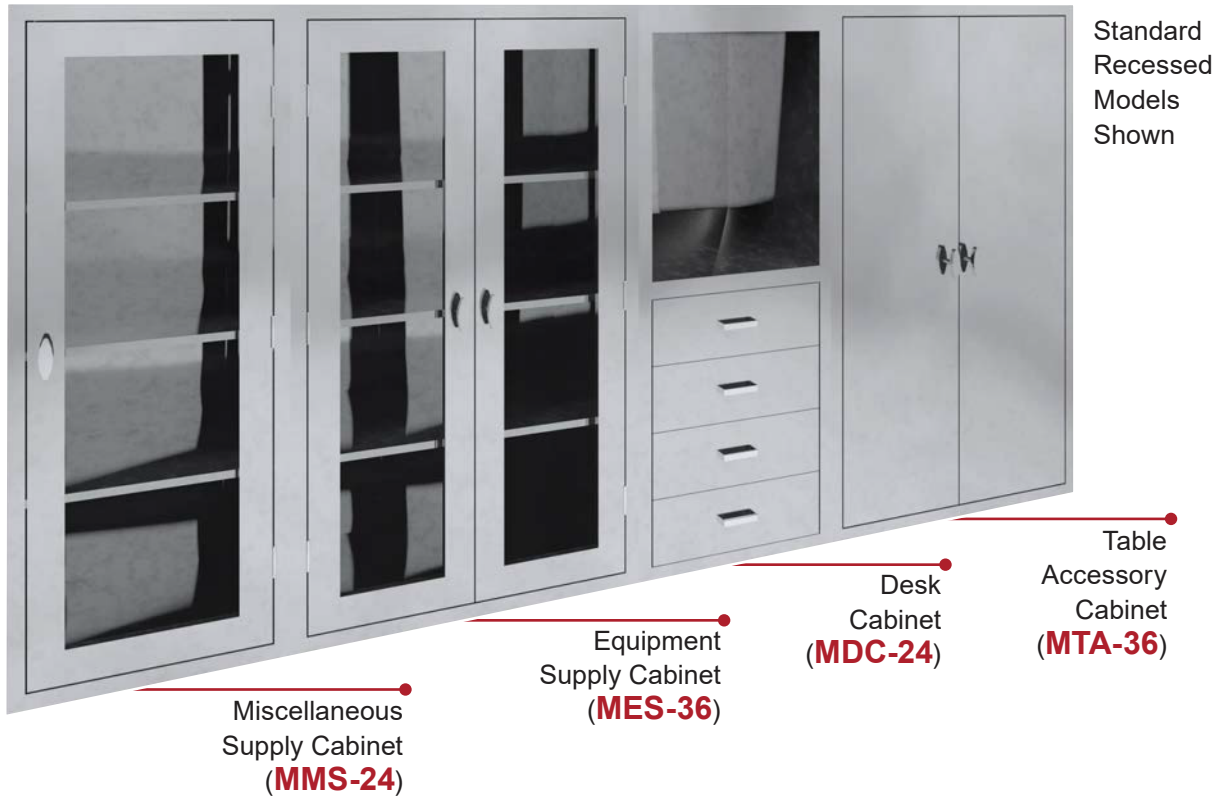
MODEL #	DIMENSIONS (W x H x D inches)	SHELVES
MHC-A6-3018	30 x 84 x 18	5
MHC-A6-3024	30 x 84 x 24	5
MHC-A6-3618	36 x 84 x 18	5
MHC-A6-3624	36 x 84 x 24	5
MHC-A6-4218	42 x 84 x 18	5
MHC-A6-4224	42 x 84 x 24	5
MHC-A6-4818	48 x 84 x 18	5
MHC-A6-4824	48 x 84 x 24	5

Note: Additional sizes available for specific requirements; please contact us for further assistance

Note: Additional shelving available for purchase

Ask about these custom features for our High Cabinets:

- Pass through construction with optional interlock
- Pull out drawers
- Cabinet fillers
- Lead lined construction
- Pull out baskets
- Trim kits
- Divider shelves
- Casters (adds 2 1/2" to height)
- LED lighting (installation required)



OPERATING ROOM CABINETS

Acart's full line of stainless steel Operating Room Cabinets can be assembled and configured in a number of ways to create a bank of cabinets to fit your facility needs. Standard models are recessed with several optional features to choose from.

STANDARD FEATURES

- Magnetic door catches with a quiet close
- Seamless front face on all cabinets
- Revit files & spec sheets available
- Recessed
- Fully welded construction
- Type 300 series stainless steel
- Stainless steel shelves (excludes Table Accessory Cabinets & Desk Cabinets, shelves adjust in 1-1/2" increments)
- 3/16" tempered glass (where applicable)

Table Accessory Cabinets

MODEL #	DIMENSIONS (W x H x D inches)	SHELVES
MTA-36	36 x 60 x 18	0
MTA-48	48 x 60 x 18	0

Note: Additional sizes available for specific requirements; please contact us for further assistance



MTA-36

STANDARD FEATURES

- Recessed unit
- Dual solid doors
- Pegboard back & sides
(with 1/4" diameter holes, 1" center to center)
- Tee handles

OPTIONAL FEATURES

- Glass doors
- Tee handles with key lock
- Electronic keypad door lock with standard handles
- 12" high base
- Sloping top

Equipment Supply Cabinets

MODEL #	DIMENSIONS (W x H x D inches)	SHELVES
MES-36	36 x 60 x 18	3
MES-48	48 x 60 x 18	3

Note: Additional sizes available for specific requirements; please contact us for further assistance

Note: Additional shelving available for purchase



MES-36

STANDARD FEATURES

- Recessed unit
- Dual glass doors with 3/16" tempered glass
- 3 adjustable stainless steel shelves
- Tee handles

OPTIONAL FEATURES

- Solid stainless steel doors
- Tee handles with key lock
- Electronic keypad door lock with standard handles
- 12" high base
- Sloping top

Desk Cabinet

MODEL #	DIMENSIONS (W x H x D inches)	SHELVES
MDC-24	24 x 60 x 18	0

Note: Additional sizes available for specific requirements; please contact us for further assistance

STANDARD FEATURES

- Recessed unit
- Sloped writing surface
- Dry erase board
- 4 drawers with 4" standard pull handles

OPTIONAL FEATURES

- 12" high base
- Sloping top



MDC-24

Miscellaneous Supply Cabinet

MODEL #	DIMENSIONS (W x H x D inches)	SHELVES
MMS-24	24 x 60 x 18	3

Note: Additional sizes available for specific requirements; please contact us for further assistance

Note: Additional shelving available for purchase

STANDARD FEATURES

- Recessed unit
- Single glass door with 3/16" tempered glass
- 3 adjustable stainless steel shelves
- Tee handle

OPTIONAL FEATURES

- Solid stainless steel door
- Tee handles with key lock
- Electronic keypad door lock with a 4" standard pull handle
- Right or left hinge
- 12" high base
- Sloping top



MMS-24

Ask about these custom features for our Operating Room Cabinets:

- Pass through construction with optional interlock
- Lead lined construction
- Divider shelves
- Pull out drawers
- Pull out baskets
- Endoscope hooks
- Catheter slides with hooks
- Pull out catheter box
- Cabinet fillers
- Trim kits
- LED lighting (installation required)

Operating Room Bases

MODEL #	DIMENSIONS (W x H x D inches)
MORB-2412	24 x 12 x 18
MORB-3612	36 x 12 x 18
MORB-4812	48 x 12 x 18

Note: Additional sizes available for specific requirements; please contact us for further assistance

STANDARD FEATURES

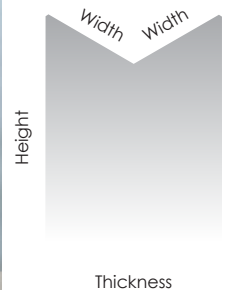
- Type 300 series stainless steel

Corner Guards

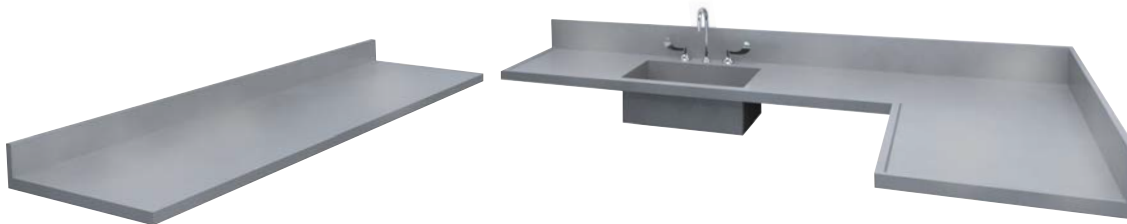
MODEL #	DIMENSIONS (W x H inches)	THICKNESS (inches)
MORB-2412	1.5 x 48	1/16
MORB-3612	1.5 x 96	1/16
MORB-4812	2.5 x 48	1/16
MORB-3612	2.5 x 96	1/16
MORB-4812	3.5 x 48	1/16
MORB-3612	3.5 x 96	1/16

Note: Additional sizes available for specific requirements; please contact us for further assistance
Note: Contact adhesive not included

MCG-3596



Counter Tops



Counter tops are fabricated from 16 gauge (.060") 300 series stainless steel. The underside is reinforced with channels and coated with sound deadening mastic, sink included. Marine edges are provided for counter tops containing sinks. Sinks are fabricated (not drawn) from 16 gauge (.06") 300 series stainless steel with a 5/8" cove corner, laser etched gallon markings, positive pitch towards drain, and are integrally welded to top. A 4" backsplash is standard with optional side splashes. Please consult Acart for custom sizes meeting any and all architectural requirements. Counter tops are fabricated in one piece where design and materials permit.

Note: All counter tops are sold separately and installed by others along with any plumbing fixtures



MST-4818

Sloping Tops

MODEL #	DIMENSIONS (W x H x D inches)
MST-1813	18 x 6-3/4 x 13
MST-2413	24 x 6-3/4 x 13
MST-3013	30 x 6-3/4 x 13
MST-3613	36 x 6-3/4 x 13
MST-4213	42 x 6-3/4 x 13
MST-4813	48 x 6-3/4 x 13
MST-1818	18 x 9 x 18
MST-2418	24 x 9 x 18
MST-3018	30 x 9 x 18
MST-3618	36 x 9 x 18
MST-4218	42 x 9 x 18
MST-4818	48 x 9 x 18
MST-1824	18 x 11-7/8 x 24
MST-2424	24 x 11-7/8 x 24
MST-3024	30 x 11-7/8 x 24
MST-3624	36 x 11-7/8 x 24
MST-4224	42 x 11-7/8 x 24
MST-4824	48 x 11-7/8 x 24

OPTIONAL FEATURES

- Type 300 series stainless steel
- 25° slope angle

Note: Additional sizes available for specific requirements; please contact us for further assistance



MWS-4808

Wall Shelves

MODEL #	DIMENSIONS (W x D inches)	BRACKETS
MWS-2408	24 x 8	2
MWS-3608	36 x 8	2
MWS-4808	48 x 8	2
MWS-6008	60 x 8	3
MWS-7208	72 x 8	3
MWS-8408	84 x 8	4
MWS-9608	96 x 8	4
MWS-2412	24 x 12	2
MWS-3612	36 x 12	2
MWS-4812	48 x 12	2
MWS-6012	60 x 12	3
MWS-7212	72 x 12	3
MWS-8412	84 x 12	4
MWS-9612	96 x 12	4
MWS-2416	24 x 16	2
MWS-3616	36 x 16	2
MWS-4816	48 x 16	2
MWS-6016	60 x 16	3
MWS-7216	72 x 16	3
MWS-8416	84 x 16	4
MWS-9616	96 x 16	4

OPTIONAL FEATURES

- Type 300 series stainless steel
- 1" lip on back
- Pre-punched for easy wall mounting (mounting hardware not included)

Note: Additional sizes available for specific requirements; please contact us for further assistance